

SmallRig



Cage (for Sony A6100 / A6300 / A6400 / A6500)

SmallRig Cage for Sony A6100 / A6300 / A6400 / A6500 CCS2310C is designed to protect the camera and provide multiple expansion interfaces. It securely locks the camera with one 1/4"-20 screw at the bottom and one M2 screw on the left side, ensuring stability without deviation. The cage features multiple 1/4"-20 holes, 3/8"-16 ARRI locating holes for attaching accessories like the top handle (ID 3765), side handle (ID 4016) for handheld shooting, assisting with focusing, enhancing shooting stability, and allowing for monitor expansion using the top ARRI locating hole for attaching the monitor mount (ID 2903B). It has built-in cold shoe mounts for attaching microphones, lights, and other accessories. The bottom utilizes an Arca-Swiss quick release plate, enabling swift transitions between DJI RS 2/RSC 2/RS 3/RS 3 Pro gimbals and tripod shooting. Holes on the left side and bottom of the cage are reserved for such accessories as hand strap (ID 3848), shoulder strap (ID PSC2428), etc. The bottom of the cage is equipped with a built-in magnetic Allen wrench for effortless assembly and disassembly.

Safety Guidelines

1. Environment

Do not use the product underwater, in extreme temperatures (e.g., freezing or direct heat), corrosive environments, or excessive dust. Dry metal parts immediately after liquid contact to prevent corrosion.

2. Load Capacity

Do not exceed the maximum weight capacity indicated on the product. Overloading risks structural failure, deformation, or accidental drops.

3. Cleaning & Maintenance

Clean surfaces with a dry, soft cloth. Avoid chemicals like alcohol or solvents. Ensure dry and ventilated conditions for long-term storage.

4. Structural Integrity

Do not modify the product (e.g., drilling, cutting)—this compromises structural integrity and increases drop risks.

5. Malfunctions

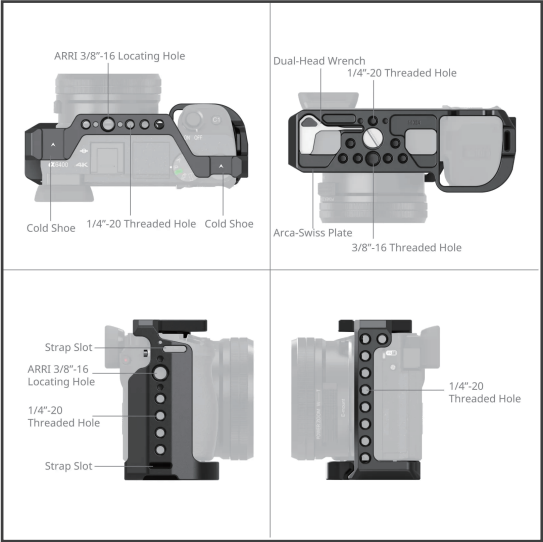
Stop use immediately if you notice deformation, unusual noises, or loose components, and contact support.

In the Box

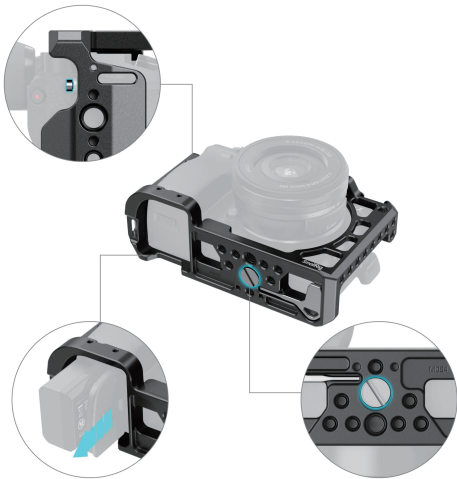
Guarantee Card × 1

Cage × 1

Product Details



Extended



Anti-Twisting Design

Anti-Twisting Design

The cage secures to the camera via one 1/4"-20 on the bottom and one m2.5 screw on the right side to prevent twists.



1/4 Screw

Prevent from twisting



M2.5 Screw

Second lock point

Specifications

Package Includes:

1 x Cage



Product Parameter

ID
CCS2310B

Net Weight
140g

Material(s)
Aluminum Alloy

Compatibility
For Sony A6100/A6300/A6400/ A6500

Product Dimensions
137 X 50 X 84.7 mm

Manufacturer Email: support@smallrig.com

Manufacturer: Shenzhen Leqi Innovation Co., Ltd.

Add: Rooms 101, 701, 901, Building 4, Gonglianfuji Innovation Park, No. 58, Ping'an Road,
Dafu Community, Guanlan Street, Longhua District, Shenzhen, Guangdong, China.

Consignor: Shenzhen LC Co., Ltd.

Add: Room 201, Building 4, Gonglianfuji Innovation Park, No. 58, Ping'an Road,
Dafu Community, Guanlan Street, Longhua District, Shenzhen, Guangdong, China.

RoHS

CE



LE TRI
+ FACILE



Séparez les éléments avant de trier



Made in China