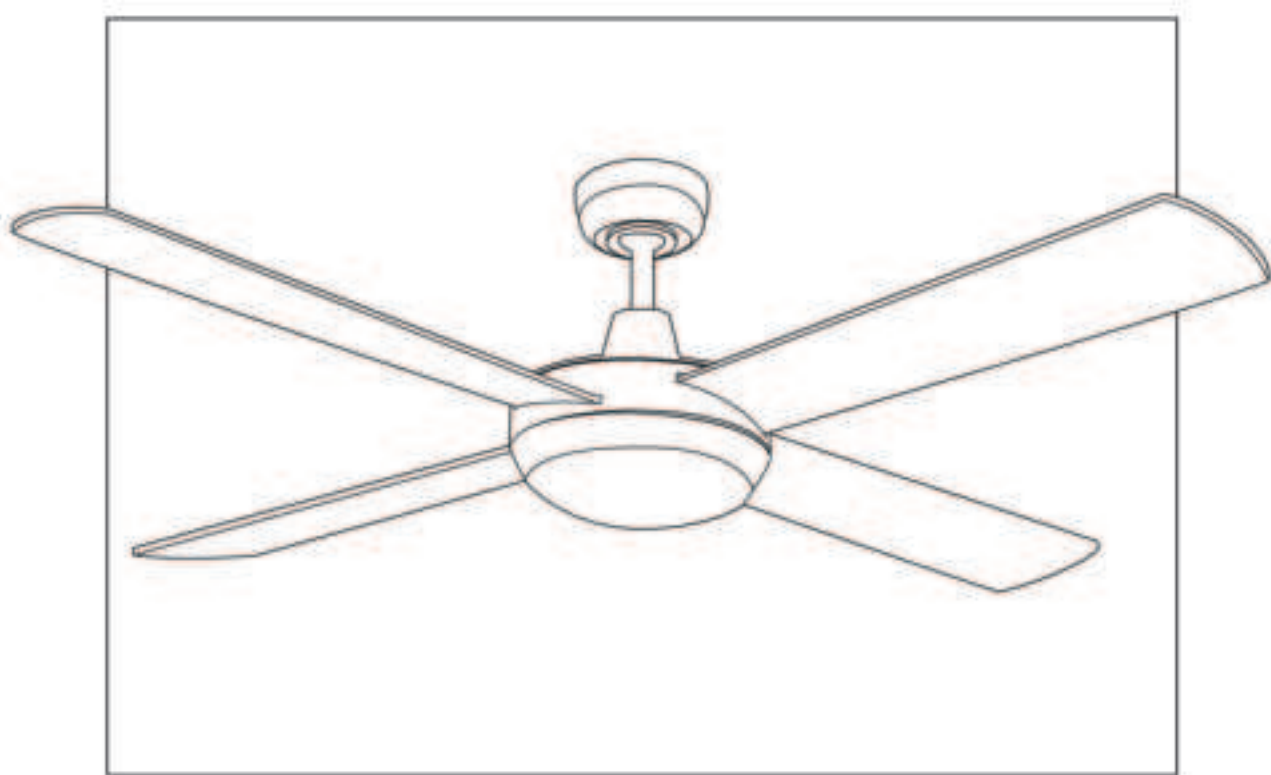




Lifestyle

Series

Ceiling Fan Instruction Book



Models: DLS1043 DLS1042 DLS134 DLS1044
 DLS1343 DLS1342 DLS1341 DLS1344
 DLS1045
 DLS1345

Thank you for purchasing your MARTEC LIFESTYLE Series product. Please read all instructions carefully before assembly and use.

IMPORTANT SAFEGUARDS

READ THESE INSTRUCTIONS CAREFULLY BEFORE INSTALLING OR USING THE PRODUCT. KEEP THE INSTRUCTIONS HANDY FOR FUTURE REFERENCE.

IMPORTANT: Always operate the product from a power source of the same Voltage, Frequency and rating as on the product Identification Plate.

IMPORTANT: The fan is to be installed so that the blades are more than 2.1 metres above the floor.

Avoid contacting moving parts, keep hands, hair and clothing well away from the product while it is in operation.

A Luminaire (light fitting) included in the fan packaging may only be fitted to this fan.

"This appliance is not intended for use by persons (including children) with reduced physical, sensory or mental capabilities, or lack of experience or knowledge, unless they have been given supervision or instruction concerning use of the appliance by a person responsible for their safety."

"Young children should be supervised at all times to ensure that they do not play with the appliance."

Do not operate any product which has been or appears damaged in any manner or after the product malfunctions.

CAUTION: To reduce the risk of electric shock, do not install the product where it can be exposed to rain, moisture or any liquid.

Do not use the product for other than its intended use as described in these instructions. This product is intended for normal domestic household use only. The use of accessory attachments other than those recommended by the manufacturer may cause safety hazards.

SAFETY

Installation of fans must follow S.A.A. standards and meet local Authority regulations. A fully qualified and licensed electrician lawfully MUST carry out installation. Means for disconnection must be incorporated in the fixed wiring in accordance with wiring rules.

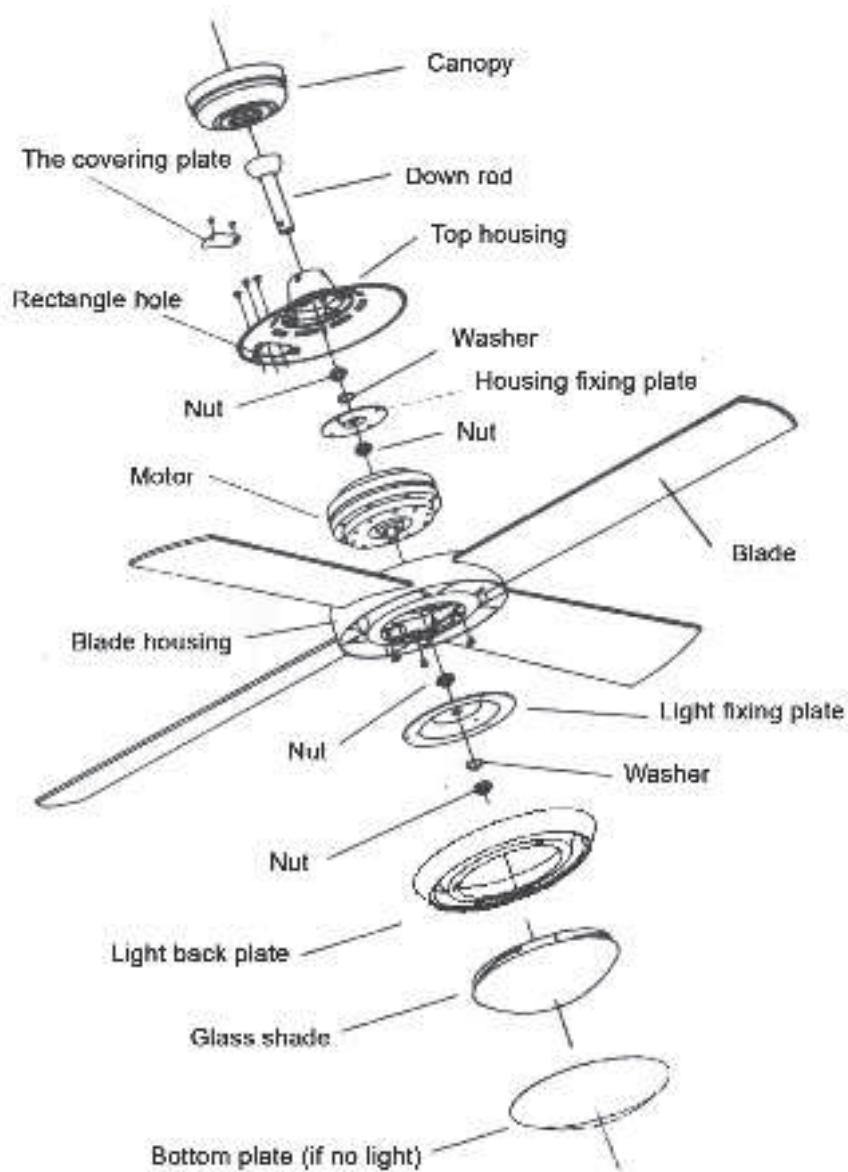
Fan and light MUST be earthed. Bracket MUST be firmly attached to a solid structure i.e. concrete ceiling, steel structure or timber frame, etc. and MUST be nailed between beams if the timber option is required. ONLY install the wall controller kit that comes supplied by Martec Pty Ltd within package. DO NOT control operation of fan and light with any other wall control than what was approved by Martec Pty Ltd and supplied within this package, as this will void warranty.

WARNING

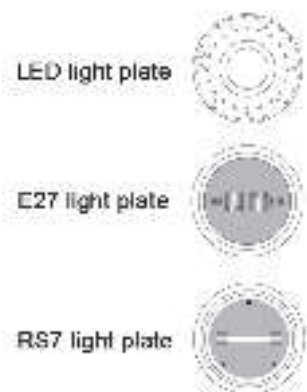
Only approved Martec Pty Ltd wall controllers should be used for the operation of our fans. The use of unauthorised controllers will void the warranty. DO NOT mix blades from one fan to another. All blades must be replaced if damaged.

PARTS LIST

DESCRIPTION	QUANTITY
Motor assembly	1
Instruction manual	1
Screw kit	1
Balancing kit	1
Hanging bracket	1
Wall control kit	1



Light Options



HOW TO ASSEMBLE

Secure the hanger bracket to ceiling beam or a suitable piece of timber inserted between the ceiling beams. Martec Pty Ltd recommends the bracket to be attached with two long screws as supplied within the package. (See Fig.1)

Place fan into hanger bracket and align Ball Joint Slot with hanger bracket as illustrated. (See Fig.2)

After wiring is completed, attach the canopy to the hanger bracket by pushing upwards and twisting anti-clockwise. Locate screws in keyholes and tighten., ensuring canopy is not touching the ball joint. (See Fig.3)

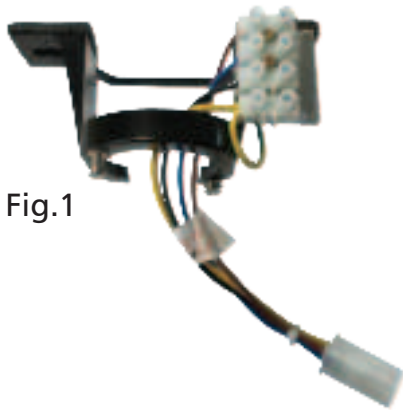


Fig.1



Fig.2



Fig.3

HOW TO INSTALL BLADES

Remove the three screws from the covering plate of blade-fixing hole. (See Fig.4)

Insert blades one at a time through four slots around the centre band and secure with three screws for each blade through the top opening. Repeat this procedure for all blades. (See Fig.4)

Replace the cover plate and secure with two screws once all four blades have been firmly fitted.

CCT (Colour changeable temperature)

DLS1042 / DLS1342 Models: Please ensure the light on the fan is switched off before changing the colour temperature of the LED light. Simply flick the switch on the LED plate (See Fig.5) to select the desired colour temperature (3000K, 4000K or 5000K).

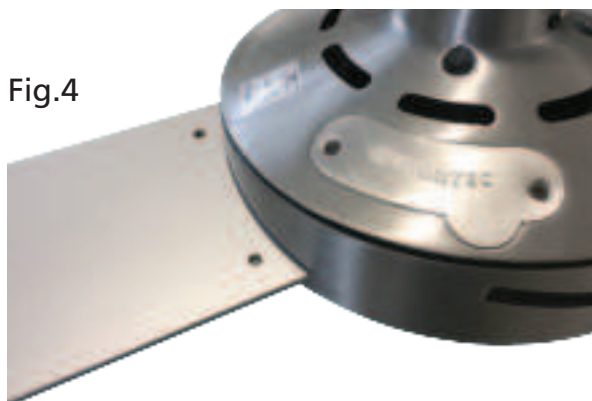


Fig.4

Fig.5



USE IN ALL SEASONS

Always ensure fan is set to 'OFF' and blades are still, prior to changing direction of blades.

Reverse switch on fan should ideally be set on 'FORWARD' (down position) during warmer season to move blades in a clockwise direction & 'REVERSE' (up position) during cooler seasons to make the fan rotate in an anticlockwise direction (See Fig.6)

Fig.6

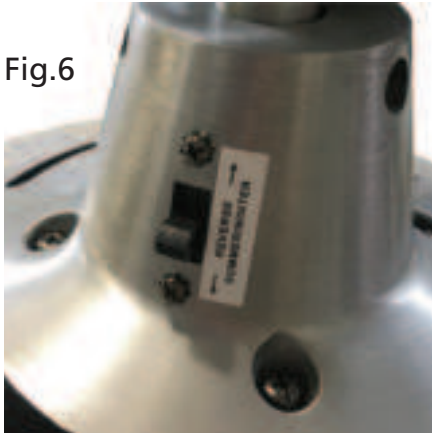
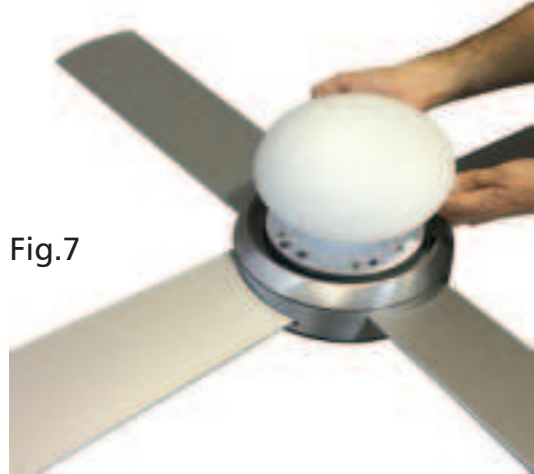


Fig.7



HOW TO REMOVE THE SHADE (Version with light)

Remove the Lamp Shade carefully as shown (See Fig.7). Turn anticlockwise to remove and clockwise to tighten the lampshade.

DLS1044 / DLS1344 Models: Only 2 x 15W (MAX) CFL bulbs shall be used. Insert the CFL bulb in the holder (See Fig.8). Always use a pair of gloves or keep your hands clean when installing or replacing CFL bulbs. Keeping the globe clean is important and the lifetime of a dirty globe may be shorter than a cleaner globe.

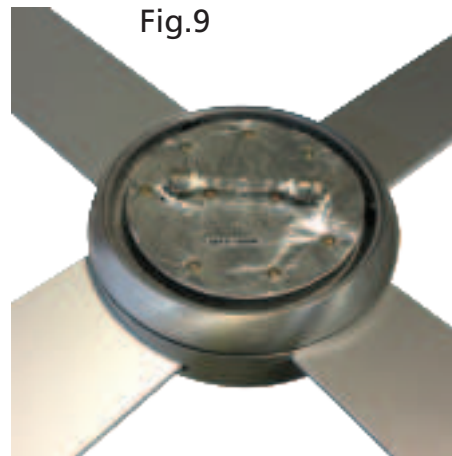
CAUTION: Make sure the power to the fan is not on when inserting light globes (globes not included with the fan).

DLS134 / DLS1341 Models: Only Quartz Halogen globes with 100W (MAX) shall be used. Insert the Quartz Halogen bulb in the holder (See Fig.9). Always wear a pair of gloves or keep your hands clean while installing or replacing Halogen Globes. Keeping the globe clean is important and the lifetime of a dirty globe may be shorter than a cleaner globe.

Fig.8



Fig.9



WIRING INSTRUCTIONS

