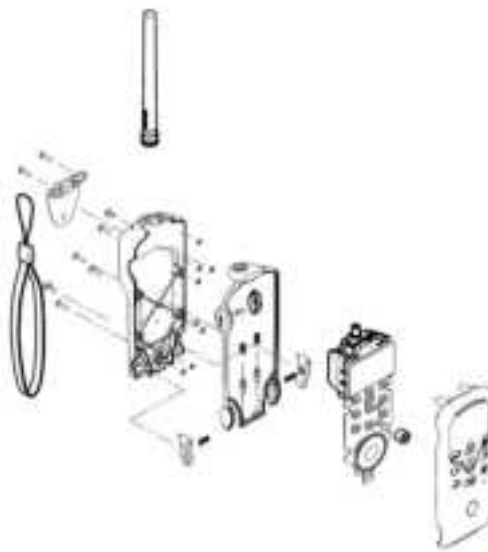


Tron TR20 GMDSS Radio

Product Dismantling and Recycling

Part Number: 99930



- 1) Tools are required to dismantle the Tron TR20 radio, the TR20 charger, and the batteries.
- 2) Separate the battery from the radio and remove the screws to access the printed circuit board inside.
- 3) Recycle the plastic parts, metal, rubber gasket, and electronic circuit board according to local regulations.
- 4) The Tron TR20 charger consists of a plastic housing and a circuit board, both must be recycled according to local regulations.

Tron TR20 GMDSS Radio

Product Dismantling and Recycling

Part Number: 99930



MECHANICAL /HOUSING



ELECTRONICS



BATTERY

| | | |
|--|---|---|
| <p>The mechanical housing for the TR20 radio, the TR20 charger, and the TR20 batteries are mainly made of plastic granulate.</p> | <p>There is one printed circuit board inside the Tron TR20 radio unit that contains electronic components.</p> <p>There is one printed circuit board inside the Tron TR20 charger that contains electronic components.</p> <p>Some of the boards may contain critical materials which should be recycled.</p> | <p>The Tron TR20 Emergency battery consists of 6 cells of primary lithium batteries of the Energizer L-91 type.</p> <p>The Tron TR20 rechargeable battery consists of 6 cells of NiMh batteries.</p> <p>Details about the Tron TR20 batteries can be found on www.jotron.com under the specific product and download section.</p> |
|--|---|---|

PROPER PRODUCT RECYCLING

For proper product disposal and recycling, please:

- Consult your local authorities about your country's disposal and recycling rules and regulations.
- Observe the applicable WEEE (Waste from Electrical and Electronic Equipment) rules.

CRITICAL RAW MATERIAL (CRM) CONTENT PER COMMODITY TYPE

Critical raw materials (CRMs) are of high economic importance and have a high risk of supply chain disruption. In 2023, EU published a fifth list of 34 CRMs in the Annex II of [the Regulation proposal COM\(2023\)](#) based on the [Study on the Critical Raw Materials for the EU 2023 – Final Report](#).

Based on the fifth list from 2023 of critical raw materials for the EU, Jotron has conducted an analysis of CRM content in the company's products. The content is limited to information sourced by responses and documentation from suppliers and manufacturers. The sourcing of documentation was done by questions on email, phone calls, meetings and searching verified online pages. The CRM content is limited to commodity group, not part specific.

The table below lists Jotron's commodity types that may contain critical raw materials (CRMs).

| Capacitor | Connector | Diode | Fasteners | Fuse |
|-------------------------------|---|---|---|--|
| Aluminium (bauxite) Copper | Brass (copper) Nickel | Copper Silicon | NA | Aluminium (bauxite) Copper Nickel |
| Inductive parts | Integrated circuit | Memory | Metal sheet | Opto |
| Magnesium Titanium dioxide | Aluminium (bauxite) Copper | Aluminium (bauxite) Baron Copper | Aluminium (bauxite) Copper Nickel | Fluorine Possible terbium* in display |
| Printed circuit boards | Relay | Resistor | Switchers | Batteries |
| Copper | Aluminium (bauxite) Copper Nickel | Aluminium (bauxite) Bismuth Boron Nickel Silicon Titanate (titanium) | Aluminium (bauxite) Copper Manganese Nickel Silicon | Aluminium Cobolt Copper Gallium Lithium Manganese Nickel |

*heavy rare earth element