

# PHILIPS

CANbus adapters

Accessories for LED  
upgrade

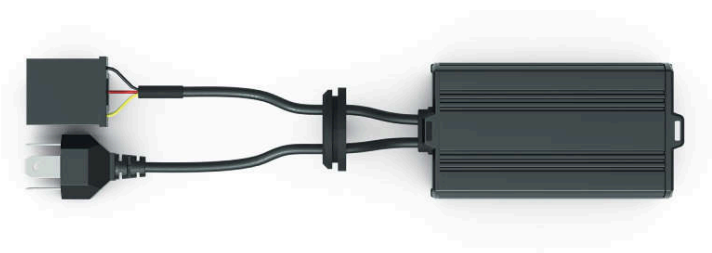
For [≈H4]-LED retrofit

Prevent signal and light error

Easy installation

Waterproof design

18960X2



## 3-in-1 solution

### Advanced automotive system

Enjoy a 3-in-1 solution\* for Philips LED bulbs' dashboard warnings and light issues with Philips CANbus adapters. Philips CANbus adapters ensure your LED bulbs' reliable and long-lasting performance in real drive conditions.

#### **3-in-1 solution**

- Prevent from misleading dashboard signals
- Prevent from flickering and dimming issues

#### **Easy installation**

- Choose the peace of mind
- Easy installation

#### **Reliable Philips quality**

- Full electromagnetic compatibility
- Reliable Philips quality

# Highlights

### Avoid false dashboard warnings

Sometimes, when installing LED retrofit bulbs, the lower power consumption of the LED be interpreted by the cars safety system as a failure of the bulbs. This will display an error signal on the dashboard while the LED bulbs work perfectly. To avoid this inconvenience, we recommend using a Philips CANbus Adapter. The Philips CANbus Adapter for Philips LED HL [H4] bulbs connects to the cars built-in safety system to eliminate false error messages on the dashboard. Drivers can enjoy their Philips LED bulbs with peace of mind.

### Prevent from light issues

The lower power consumption of LED bulbs can sometimes create current variation problems resulting in downgrading the LED headlight bulbs performance. Featuring a smart 3-in-1 function, our Philips CANbus Adapter brings an additional capacitor function, avoiding flickering and light-dimming issues. Enjoy the best of your Philips LED retrofit bulbs with the latest Philips CANbus Adapters generation.

### Choose the peace of mind

Every vehicle model is different; most don't require a Philips CANbus Adapter when retrofitting to LED lights! To know if a Philips

CANbus Adapter is needed for your vehicle model, visit our Philips website and check our latest online compatibility list\*\*.

### Easy installation

Thanks to their compact design, our Philips CANbus adapters are easy to install, even in tight spaces. They are equipped with connectors to fit standard vehicle sockets, making connection quick and easy. The Philips CANbus adapter pack also includes cable glands for waterproof wiring wherever required. Find the user manual on our Philips support page\*\*\*.

### EMI-compliance guaranteed

Our Philips CANbus Adapters are EMI-compliant guaranteed, conforming to automotive-industry standards on electromagnetic interference. Precision-engineered to withstand the rigors of modern motoring life, their use does not interfere with the regular operation of the other vehicle parts.

### Reliable Philips quality

The Philips CANbus Adapters are durable and provide long-lasting performance. Tested in the toughest conditions, they provide IP65 ingress protection from dust and water and are covered by our Philips warranty policy. Visit [Philips.com/auto-warranty](https://philips.com/auto-warranty) to know more and register for an extended warranty\*\*\*\*.

# Specifications

### Marketing specifications

**Product highlight:** 3 in 1 solution

**Expected benefits:** Avoid signal and light issues

### Product description

**Application:** Low beam, High beam

**Designation:** LED CANBUS H4 18960 12V X2

**Homologation ECE:** NO

**Operating Temperature:** -40/+85 °C

**Range:** CANbus adapter LED-HL

**Technical features:** 3 in 1 solution

**Technology:** LED

**Type:** H4

**Compatible with:** Car models listed in the Philips compatibility list\*\*

**Marking:** KBA approved

**Designation LED type:** H4-LED, [≈ H4]

**Ingress protection rating (IP):** IP65

### Electrical characteristics

**Wattage:** 12 W

**Voltage:** 12 V

### Ordering information

**Order entry:** 18960X2

**Ordering code:** 80243194

### Logistic data

**Quantity in box:** 2

**MOQ:** 4

### Packaging Data

**EAN1:** 6932080802431

**EAN3:** 6932080802448

**Packaging type:** X2

### Packed product information

**Length:** 18.5 cm

**Width:** 11.5 cm

**Height:** 6 cm

**Net weight per piece:** 190 g

**Pack Quantity:** 2 pcs

**MOQ (for professionals):** 8 pcs (4 sets)

**Gross weight per piece [g]:** 500

### Outerpack information

**Length:** 38.8 cm

**Width:** 12.2 cm

**Height:** 13.8 cm

**Gross weight per piece:** 1.985 kg

### Lifetime

**Life time:** 3000 h



\*\* Avoid false dashboard warnings, prevent from flickering and light dimming issues

\*\*\* We continually test our bulbs and accessories with more vehicle models and update our compatibility list on a regular basis. If your vehicle model is not listed, it has not been tested yet. Please contact our customer support.

\*\*\*\* Visit [Philips.com/AutomotiveSupport](https://philips.com/AutomotiveSupport) for details

\*\*\*\*\* 3-year warranty (2 years standard + 1 year extended).

Visit [philips.com/auto-warranty](https://philips.com/auto-warranty) to register for an extended warranty