

Please read this manual carefully before use this product



USER MANUAL TOWER FAN

CAUTION

Read Rules for Safe Operation and Instructions Carefully.

WARNING

1. If the supply cord is damaged, it must be replaced by manufacturer or its service agent or a similarly qualified person in order to avoid a hazard.
2. Indoor use only.
3. To protect against the risk of electrical shock, do not immerse the unit, cord or plug in water or other liquid.
4. Switch the fan OFF and unplug it from the outlet when it is not in use, when moving it from one location to another and before cleaning.
5. When the fan was assembled, the motor blade guard shall not be taken off anymore.
6. This appliance can be used by children aged from 8 years and above and persons with reduced physical, sensory or mental capabilities or lack of experience and knowledge if they have been given supervision or instruction concerning use of the appliance in a safe way and understand the hazards involved. Children shall not play with the appliance. Cleaning and user maintenance shall not be made by children without supervision.
7. Children of less than 3 years should be kept away unless continuously supervised. Children aged from 3 years and less than 8 years shall only switch on/off the appliance provided that it has been placed or installed in its intended normal operating position and they have been given supervision or instruction concerning use of the appliance in a safe way and understand the hazards involved. Children aged from 3 years and less than 8 years shall not plug in, regulate and clean the appliance or perform user maintenance.

RULES FOR SAFE OPERATION

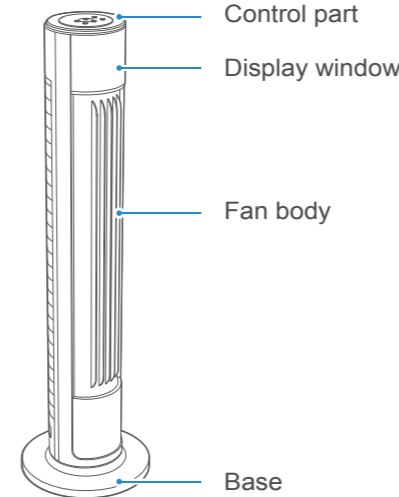
1. Never insert fingers, pencils, or any other object through the grille when fan is running.
2. Disconnect the fan when moving from one location to another.
3. Be sure the fan is on a stable surface when operating to avoid overturning.
4. DO NOT use the fan in window, rain may create electrical hazard.

Installation instructions

Note

Pictures in the manual are for reference only, and it is subject to the physical product in the packing box.

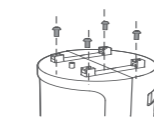
Name of components



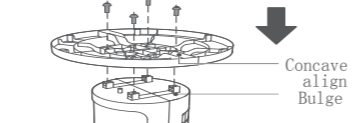
1. Assemble the base
Tips: Make the two parts of base center alignment and cross placed.



2. Remove the screws

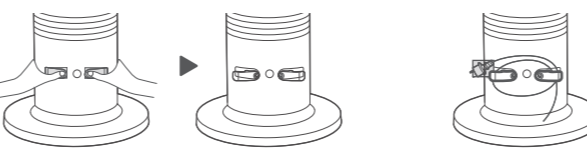


3. Install and secure the base



Power cord storage

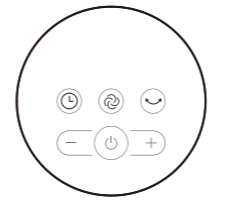
1. Press the winding hooks at both ends to open them.
2. Wrap the power cord around the winding hooks.



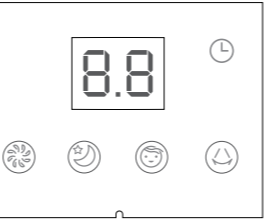
Instructions for use

Machine Body Operation Instructions

Buttons on the machine body

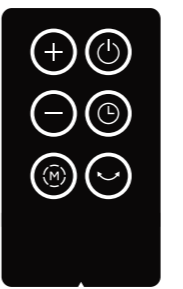


Display panel



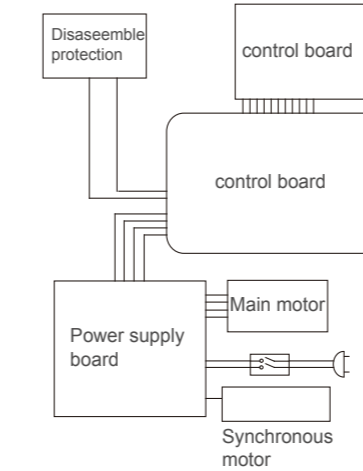
Button	Function Description
	Product start or stop.
	Touch this button to start or stop swinging wind.
	Three wind types available: Normal wind. Sleep wind and Comfortable wind.
	Touch "+" or "-" button to adjust the wind speed: normal wind(1-6 gears). Sleep wind(1-2 gears) . Comfortable wind(1-3 gears)
	Press this button to set the shutdown time in the start state or set the boot time in the standby state. Touch "+" or "-" button to set the timing time.

Instructions for buttons of remote controller



	ON/OFF key
	Function key
	"+" key
	"-" key
	Timer key
	Swing key

Circuit Diagram



MAINTENANCE INSTRUCTION

The fan requires little maintenance. Do not try to fix it by yourself. Refer it to qualified service personnel if service is needed.

1. Before cleaning and assembling, fan must be unplugged.
2. To ensure adequate air circulation to the motor, keep vents at the rear of the motor free of dust. Do not disassemble the fan to remove dust.
3. Please wipe the exterior parts with a soft cloth soaking a mild detergent.
4. Do not use any abrasive detergent or solvents to avoid scratching the surface.
Do not use any of the following as a cleaner: gasoline, thinner.
5. Do not allow water or any other liquid into the motor housing or interior parts.

CLEANING

1. Be sure to unplug from the electrical supply source before cleaning.
2. Plastic parts should be cleaned with a soft cloth moisten with mild soap.
Thoroughly remove soap film with dry cloth.

NOTICE ABOUT RECYCLING



Your product is designed and manufactured with high quality materials and components which can be recycled and reused.
This symbol means that electrical and electronic equipment, at their end-of-life, should be disposed of separately from your household waste. Please dispose of this equipment at your local community waste collection/ recycling centre.

In the European Union there are separate collection systems for used electrical and electronic products.

Please help us to conserve the environment we live in!

DECLARATION OF CONFORMITY

Herewith, states that this product, complies with the requirements of below directives:
EMC-Directive: 14 / 30 / EU
Low Voltage Directive: 14/ 35 / EU
ErP Directive 09 / 125 / EC
CE Marking: 93 / 68 / EEC
RoHS Directive: 11 / 65 / EU & 15 / 863 / EU
The detailed declaration of conformity can be found at www.morris.gr



Kalliopei Karida & Co, LP
87A, 17th November str., P.C. 55535
Pylala, Thessaloniki
Tel. 2316 006600 -Fax. 2316 006650
www.morris.gr