



# isinwheel

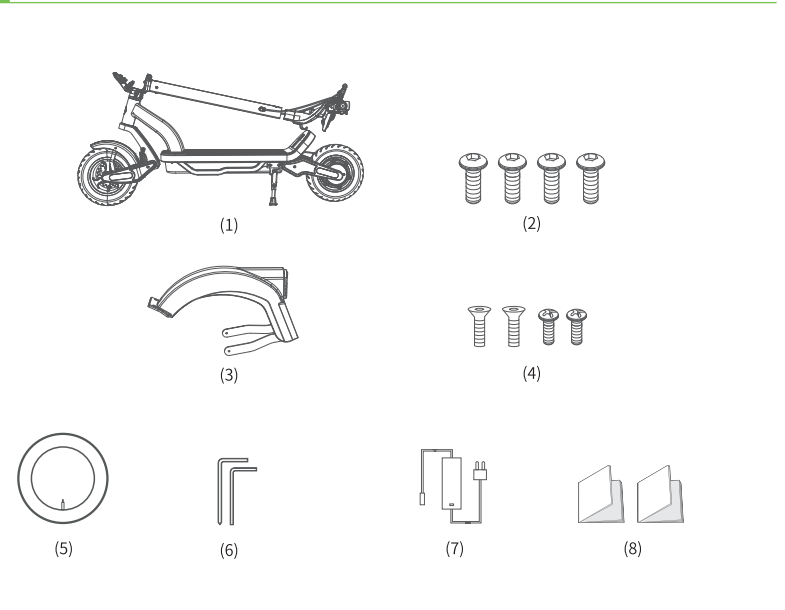
## User Manual

### S-Nova Pro UK

IMPORTANT! Read carefully and keep for future reference.

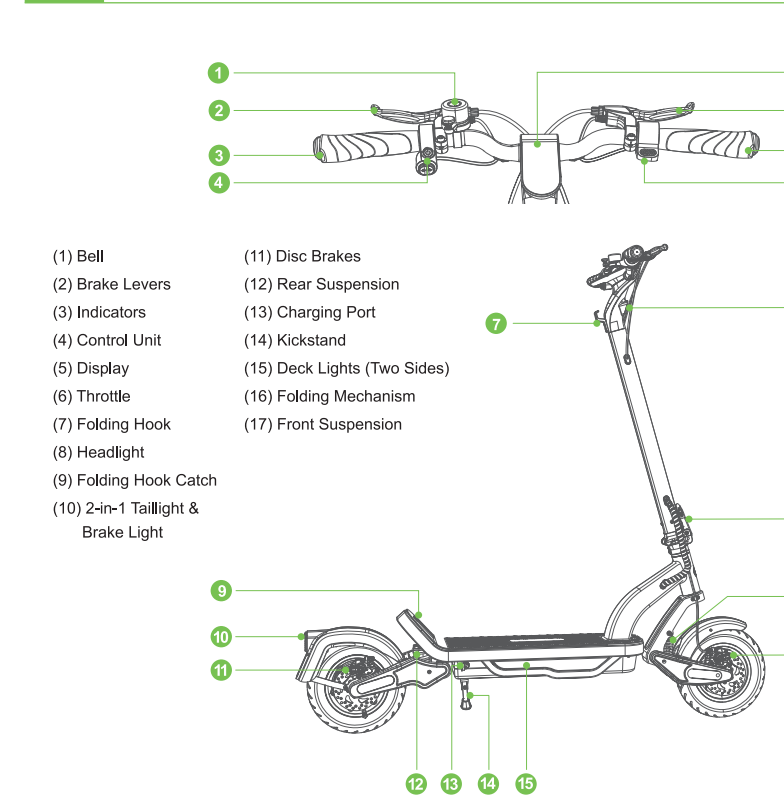
Illustrations of product, accessories, and user interface in the user manual are for reference purposes only. Actual product and functions may vary due to product enhancements.

## A Package Contents



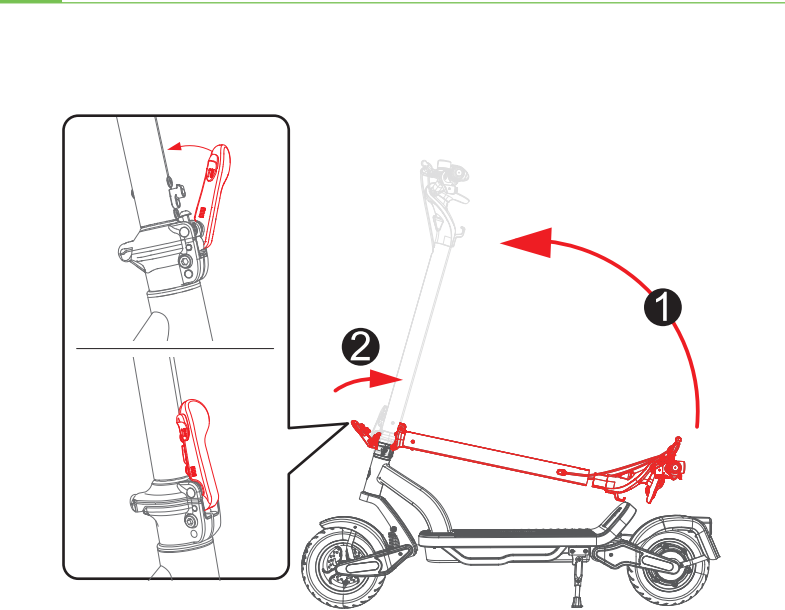
- (1) Scooter
- (2) Handlebar Mounting Bolts
- (3) Rear Fender
- (4) Fender Mounting Bolts (2 Types)
- (5) Spare Inner Tube
- (6) Tools
- (7) Charger
- (8) User Manual + Safety Instructions

## B Product Overview

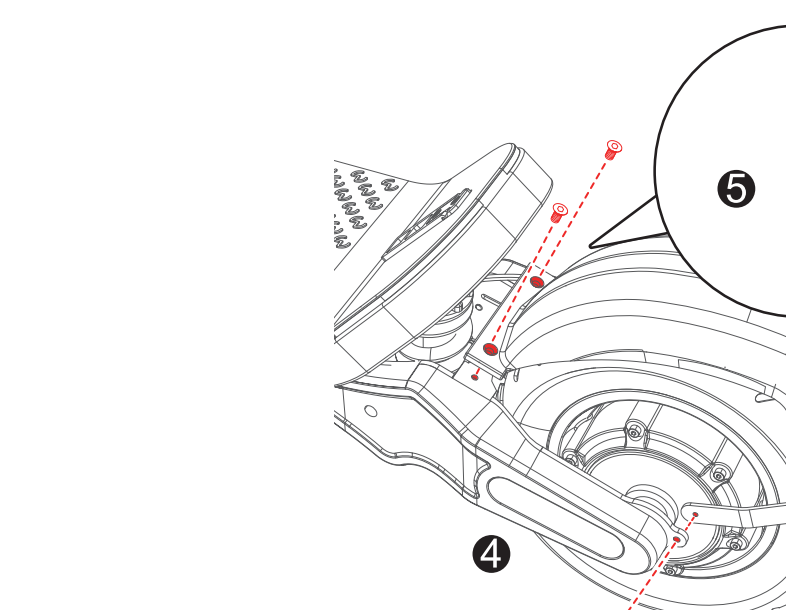
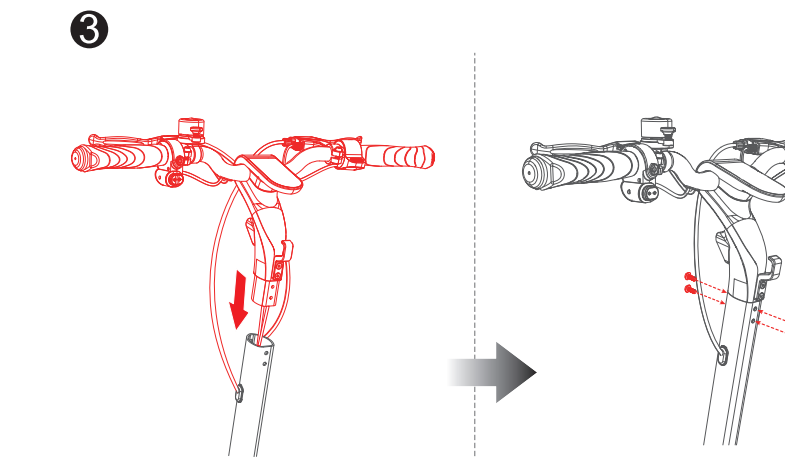


- (1) Bell
- (2) Brake Levers
- (3) Indicators
- (4) Control Unit
- (5) Display
- (6) Throttle
- (7) Folding Hook
- (8) Headlight
- (9) Folding Hook Catch
- (10) 2-in-1 Taillight & Brake Light
- (11) Disc Brakes
- (12) Rear Suspension
- (13) Charging Port
- (14) Kickstand
- (15) Deck Lights (Two Sides)
- (16) Folding Mechanism
- (17) Front Suspension

## C Assembly

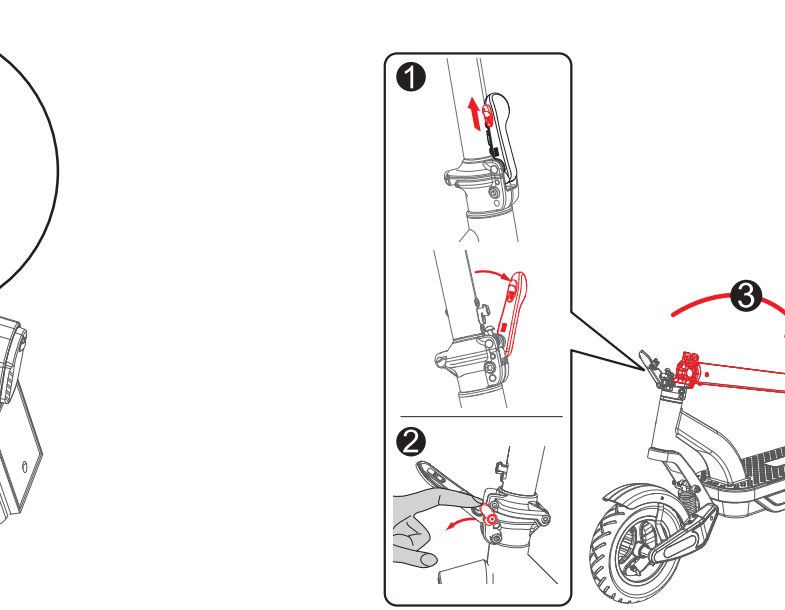


Push down the kickstand, raise the stem until it is upright (carefully guide the semi-attached handlebar up with the stem), and close the folding latch until it clicks in place.



Position the rear fender over the rear wheel with the holes aligned and tighten the bolts. Then, connect the taillight cable and secure it onto the brake line with the supplied zip tie.

## To Fold the Scooter



- 1. With the scooter powered off, while pushing up the tab on the folding latch, pull open the folding latch.
- 2. Flip the safety button forward and lower the stem.
- 3. Lift the folding hook catch out from the footrest and hold it vertical. Adjust the position of the catch and stem until the folding hook is in the top hole of the catch.
- 4. Check that the scooter is secure in the folded position.



## Fully Charge the Battery

- **Fully charge the battery before the first ride.**
- Only use the original charger to charge the battery.
- Do not connect the charger if the charging port is wet.
- The electric scooter is fully charged when the charger indicator changes from red to green.
- With charging protection, the scooter will cut off charging automatically after a full charge. However, we still do not recommend leaving it overcharging.
- Keep the charging port cover closed when not charging.
- Do not operate it while charging.

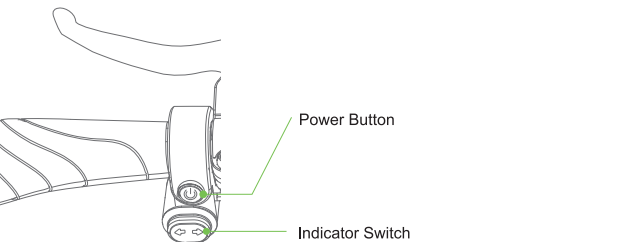


## Check Tire Pressure

After assembling the e-bike and before each ride, check the tires. If they feel soft or spongy, inflate them to the proper pressure. (NO pump is included.)

## E

### Basic Operations



#### Power ON/OFF

Press and hold the Power button for about 2 seconds.

#### Lights ON/OFF

Press the Power button once to turn on/off the headlight, deck lights, and taillight simultaneously when the scooter is on.

#### Switch Riding Mode

Press the Power button twice when the scooter is on.

#### Imperial/Metric Units

Press the Power button three times when the scooter is on.

#### Zero / Non-zero Start

Press the Power button four times when the scooter is on.

#### Cruise Control ON/OFF

Press the Power button five times when the scooter is on.

#### Left/Right Indicator

Press the left/right Indicator button to turn on the left/right Indicator respectively when the scooter is on.

#### Reset Odometer

While squeezing the brake lever, press the Power button four times.

**\* The display will show ODO for 5 seconds, then automatically switch to TRIP.**

#### Factory Reset

While squeezing the brake lever and applying the throttle, press the Power button eight times.

#### NOTE:

- Every time the scooter powers on, the display will show ODO for 5 seconds before automatically switching to TRIP.
- The scooter will automatically power off after 10 minutes of inactivity.
- The deck lights have four modes to choose from via the app.
- The Indicator will automatically turn off after flashing for 30 seconds.

## F

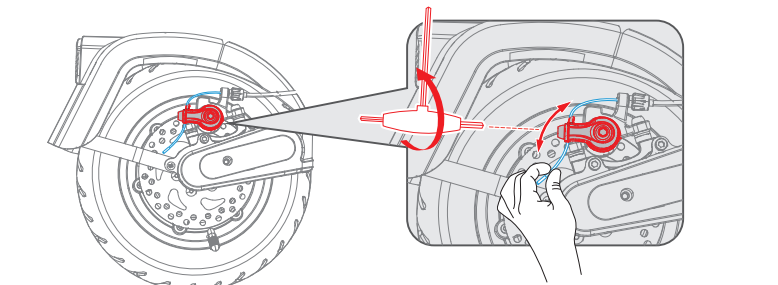
### Error code

The following are common error codes you may encounter. If you experience any of these or other error codes, contact us for support.

Error Code	Meaning
E10	Communication Fault
E14	Throttle Fault
E15	Brake Lever Fault
E16	Motor Hall Sensor Fault
E50	Over-Voltage Protection

## G

### Settings

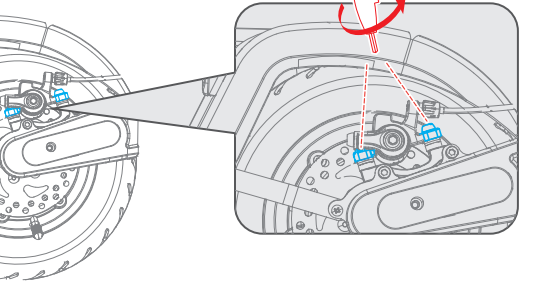


#### To eliminate brake noise:

- 1) Loosen the two brake caliper mounting bolts (not the bolt on the cable clamp).
- 2) Reposition the brake caliper to ensure the brake rotor is centered between the brake pads.
- 3) Retighten the mounting bolts.

#### To adjust the brake cable:

- You need a hex wrench (NOT included) to loosen the bolt on the cable clamp.
- If the disc brake is dragging, slide the arm of the clamp backward along the cable while holding the cable in one hand. Then, retighten the bolt on the brake clamp.
- If the disc brake does not work efficiently, the cable is slack. You need to slide the arm of the clamp forward along the cable while holding the cable in one hand. Then, retighten the bolt on the brake cable clamp.



## H

### Specifications

Model	S-Nova Pro
Unfolded Size	129 x 61 x 129 cm
Folded Size	129 x 61 x 55 cm
Weight	27.4 kg
Battery Capacity	48 V, 13 Ah
Motor Power	600 W
Range	56–61 km *
Max Load Capacity	120 kg*
Recommended Age	18+
Charger Input & Output	AC 100–240 V, 50/60 Hz DC 54.6 V, 2 A
Charging Time	6–7 h
Waterproof Rating	IPX4

- \* About the range: Measured in a laboratory under 100% battery level condition. The range will differ depending on different factors, such as load, humidity, wind speed, and operation habits.
- \* The structure of this scooter is designed to support a maximum 120 kg load. For the best riding experience, 70% of the maximum load is recommended.

#### Disposal of Electrical and Electronic Equipment

The crossed-out garbage can means that you are legally obliged to dispose of these devices separately from unsorted municipal waste. Disposal via the residual waste bin or the yellow bin is prohibited. If the products contain batteries or rechargeable batteries that are not permanently installed, they must be removed before disposal and disposed of separately as a battery.

#### Options for Returning Old Devices (EAR)

Owners of old devices can hand them over within the scope of the options for returning or collecting old devices that have been set up and made available by public waste disposal authorities, so that proper disposal of the old devices is ensured.

#### Data Protection

We would like to point out to all end users of waste electrical and electronic equipment that they are responsible for: deleting personal data on the old equipment itself to be disposed of.

#### CE WARNING

This appliance is not to be used by persons (including children) with reduced physical, sensory or mental capabilities, or lack of experience and knowledge, unless they have been given supervision or instruction concerning use of the appliance by a person responsible for their safety. Children should be supervised to ensure they do not play with the appliance.

#### Declaration of Conformity

For the full text of the EU Declaration of Conformity, visit the link: <https://www.isinwheel.co.uk/pages/declaration-of-conformity>

Scan to install the "isinwheel club" App



You will get

- Digital manual
- Step-by-step setup videos
- FAQs & troubleshooting
- Electronic Lock

...

**Manufacturer:** Shenzhen Xincheng Times Technology Co., Ltd.  
**Address:** 104-105, Block C, Donghai Wang Building, No. 369 Bulong Road, Ma'antang Community, Bantian Street, Longgang District, Shenzhen  
**E-mail:** support@isinwheel.eu

**UK REP** JunBright Ltd  
Add: 51 Chalkton Street London, England, NW1 1HY  
Contact: Shaopeng Yang  
E-mail: junbrigh2024@gmail.com  
Tel: +44 0756 1533298

