

COOLPIX P1100

User's Manual (with Warranty)

- Read this document thoroughly before using the camera.
- To ensure proper use of the camera, be sure to read "For your safety" (overleaf).
- After reading this document, keep it readily accessible for future reference.

No reproduction in any form of this document, in whole or in part (except for brief quotation in critical articles or reviews), may be made without written authorization from NIKON CORPORATION.



NIKON CORPORATION
© 2025 Nikon Corporation



Printed in Thailand
6MQ06911-02 En

Nikon Europe Service Warranty Card

Model name	Serial No.
COOLPIX P1100	
Purchase date	
Name and address of customer	
Dealer	
Distributor	Manufacturer
Nikon Europe B.V. The Garden, Stroombaan 14, 1181 VX Amsterdam, The Netherlands	NIKON CORPORATION 1-5-20, Nishi-ku, Shinagawa-ku, Tokyo 140-8601, Japan

Warranty terms - Nikon Europe service warranty

Dear Nikon customer,

We thank you for your purchasing this Nikon product. Should your Nikon product require warranty service, please contact the dealer from whom it was purchased or a member of our authorized service network within the sales territory of Nikon Europe B.V. (e.g. Europe/Russia/others). See details under: <https://www.nikoneurope.com>

In order to avoid any unnecessary inconvenience, we advise you to read the user manuals carefully before contacting the dealer or our authorized service network.

Your Nikon equipment is guaranteed against any manufacturing defects for one full year from the date of original purchase. If during this period of guarantee the product proves defective due to improper material or workmanship, our authorized service network within the sales territory of Nikon Europe B.V. will, without charge for labor and parts, repair the product in the terms and conditions set as below. Nikon reserves the right (at its sole discretion) to replace or repair the product.

1. This warranty is only provided upon presentation of the completed warranty card and original invoice or purchase receipt indicating the date of purchase, product type and dealer's name, together with the product. Nikon reserves the right to refuse free-of-charge warranty service if the above documents cannot be presented or if the information contained in it is incomplete or illegible.

2. This warranty will not cover:

- necessary maintenance and repair or replacement of parts due to normal wear and tear.
- modifications to upgrade the product from its normal purpose as described in user manuals, without the prior written consent of Nikon.
- transport costs and all risks of transport relating directly or indirectly to the warranty of the products.
- any damage resulting from modifications or adjustments which may be made to the product, without the prior written consent of Nikon, in order to comply with local or national technical standards in force in any other country than the ones for which the product was originally designed and/or manufactured.

3. The warranty will not be applicable in the case of:

- damage caused by misuse including but not limited to failure to use the product for its normal purpose or according to the user instructions on the proper use and maintenance, and to installation or use of the product inconsistent with the safety standards in force in the country where it is used.
- damage caused by accidents including but not limited to lightning, water, fire, misuse or neglect.
- defacing, illegibility or removal of the model or serial number on the product.
- damage resulting from repairs or adjustments which have been conducted by unauthorized service organizations or persons.
- defects in any system into which the product is incorporated or with which it is used.

4. This service warranty does not affect the consumer's statutory rights under applicable national laws in force, nor the consumer's right against the dealer arising from their sales/purchase contract.

Notice: An overview of all authorized Nikon Service Stations can be found online by following this Link
(URL = <https://www.nikoneurope.com>).

The Nikon Download Center

Visit the Nikon Download Center to download firmware for cameras, NX Studio and other Nikon software, and documentation for Nikon products including cameras and flash units.
<https://downloadcenter.nikonimglib.com/>

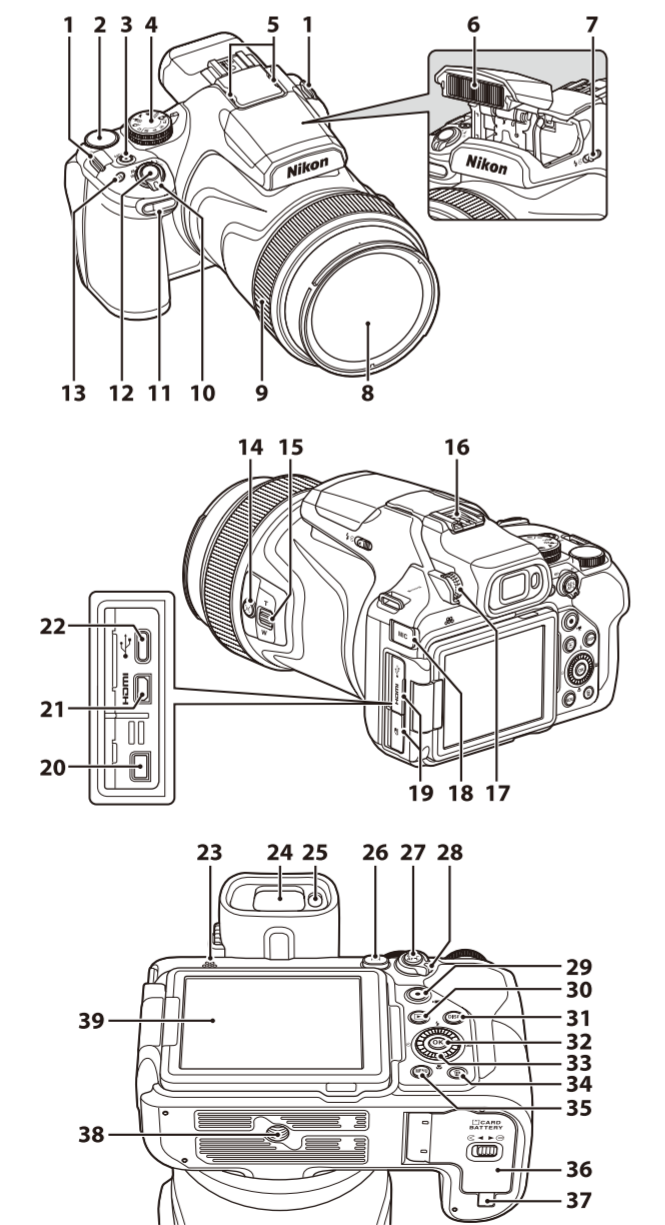
Downloading Nikon software

Nikon NX Studio computer software is available from the Nikon Download Center. The Nikon SnapBridge app for smartphones and tablets is available from the Apple App Store® and Google Play™. For more information, see the "Reference Guide".

Package contents

- Be sure all items listed here were included with your camera.
- ☐ Camera
 - ☐ AN-DC3 Strap
 - ☐ LC-77 Lens Cap
 - ☐ HB-CP1 Lens Hood
 - ☐ EN-EL20a Rechargeable Li-ion Battery
 - ☐ UC-E24 USB Cable
 - ☐ Warranty (see left)
 - ☐ User's Manual (this sheet)
- Memory cards are sold separately.
- SD, SDHC, and SDXC memory cards are referred to as "memory cards" in this document.

Parts of the camera



COOLPIX P1100 Model Name: N2323

Nikon user support

Should you need technical support, we offer a number of options.

- **For users in the U.S.A.:** <https://www.nikonusa.com/>
- **For users in Canada:** <https://www.nikon.ca/>
- **For users in Mexico:** <https://www.nikon.com.mx/>
- **For users in Latin America:** <https://www.nikonamericatina.com/>
- **For users in Europe:** <https://www.nikoneurope.com>
- **For users in Asia, Oceania, the Middle East, and Africa:** <https://www.nikon-asia.com/>

The COOLPIX P1100 User's Manual and Reference Guide

In addition to this *User's Manual*, a *Reference Guide* is available for your camera.

The User's Manual (this sheet)

The *User's Manual* describes basic camera operations.

The Reference Guide

Camera features and operations are detailed in a *Reference Guide*, a supplement to the *User's Manual*. The *Reference Guide* can be viewed on computers, smartphones, and tablets.

nikon reference guide P1100

<https://onlinemanual.nikonimglib.com/p1100/en/>

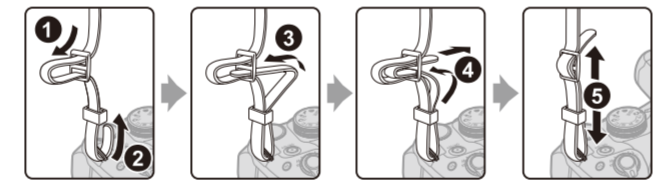
- | | |
|--|--|
| 1 Eyelief for camera strap | 20 Accessory terminal |
| 2 Command dial | 21 HDMI micro connector (Type D) |
| 3 Power switch/power-on lamp (charge lamp) | 22 USB connector |
| 4 Mode dial | 23 Speaker |
| 5 Microphone (stereo) | 24 Electronic viewfinder |
| 6 Built-in flash | 25 Eye sensor |
| 7 $\frac{1}{2}$ (flash pop-up) control | 26 \square (monitor) button |
| 8 Lens | 27 AE-L/AF-L button |
| 9 Control ring | 28 Focus-mode selector |
| 10 Zoom control | 29 \bullet (movie-record) button |
| 11 Side zoom control | 30 \square (playback) button |
| 12 Self-timer lamp | 31 DISP (display) button |
| 13 Red-eye reduction lamp | 32 \otimes (apply selection) button |
| 14 AF-assist illuminator | 33 Rotary multi selector (multi selector) |
| 15 Shutter-release button | 34 X (delete) button |
| 16 Fn (function) button | 35 MENU (menu) button |
| 17 $\frac{1}{2}$ (snap-back zoom) button | 36 Battery-chamber/memory card slot cover |
| 18 Side zoom control | 37 Power connector cover (for optional AC adapter) |
| 19 Accessory shoe | 38 Tripod socket |
| 20 Diopter adjustment control | 39 Monitor |
| 21 External microphone connector cover | |
| 22 Connector cover | |

- The menu items displayed on the camera monitor are enclosed in [] (brackets).

Getting started

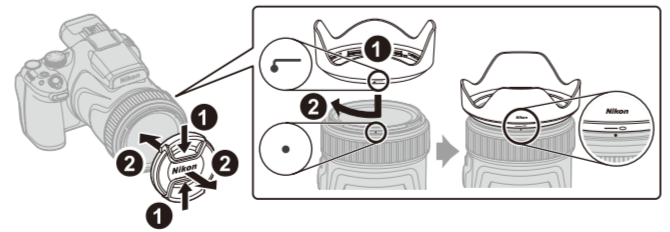
Attaching the strap

Attach the strap to the left and right side of the camera.



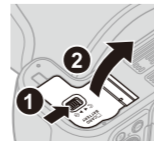
Attaching/removing the lens cap and lens hood

- When you are not shooting images, attach the lens cap to protect the lens.
- When the lens hood is attached, it cuts out light which adversely affects the image, and also helps protect the camera. Do not use the lens hood when shooting with a flash or when the AF-assist illuminator is necessary for shooting.
- Turn off the camera before attaching/removing the lens hood.

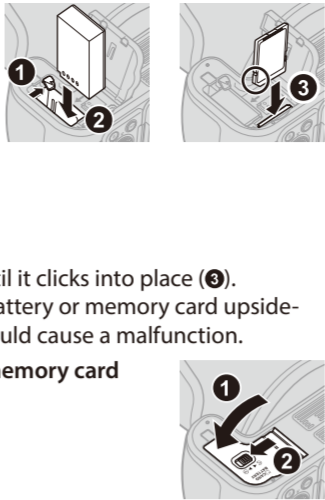


Inserting the battery and memory card

- 1 Open the battery-chamber/memory card slot cover.



- 2 Insert the battery and memory card.
- With the battery's positive and negative terminals oriented correctly, move the orange battery latch (1), and fully insert the battery (2).
- Slide the memory card in until it clicks into place (3).
- Be careful not to insert the battery or memory card upside-down or backward, as this could cause a malfunction.
- 3 Close the battery-chamber/memory card slot cover.



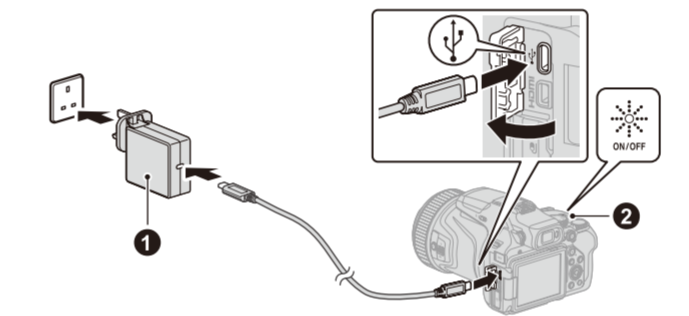
Charging the battery

Charge the supplied EN-EL20a Rechargeable Li-ion Battery before use. With the battery inserted in the camera, connect the camera to the optional EH-8P AC Adapter using the separately sold UC-E25 USB Cable (featuring Type C connectors at both ends) to charge the battery.

- The EH-8P AC Adapter cannot be connected using the supplied USB cable.

- ☒ **Notes about using the battery**
- Read and follow the warnings and cautions in "For your safety" (overleaf) and under "The battery" (overleaf) in "Caring for the product".

- 1 Insert the EN-EL20a into the camera.
- 2 Connect the separately sold UC-E25 USB Cable (featuring Type C connectors at both ends) to the camera, and then connect the optional EH-8P AC Adapter (1). Plug the AC adapter into a household power outlet. Keep the plug straight during insertion and removal.



- The power-on lamp (charge lamp) (2) flashes while the battery is charging. When charging is complete, the power-on lamp (charge lamp) turns off.
- An exhausted battery will fully charge in about 3 hours.
- When charging is complete, disconnect the USB cable. Be sure to keep the connectors straight when disconnecting them.
- The shape of the plug varies with the country or region of purchase.

- ☒ **Notes about charging the battery**
- The battery cannot be charged when the power-on lamp (charge lamp) quickly flashes, possibly due to one of the reasons described below.
 - The ambient temperature is not suited to charging.
 - The USB cable or AC adapter is not properly connected.
 - The battery is damaged.
 - The camera can be operated while the battery is charging, but the charging time increases. The power-on lamp (charge lamp) turns off while the camera is being operated.

Tip: Charging the camera battery with the EH-73P Charging AC Adapter (available separately)

The camera battery can also be charged with the EH-73P Charging AC Adapter (available separately). Connect the supplied USB cable to the camera's USB connector, and then insert the plug into an electrical outlet. Keep the plug straight during insertion and removal.

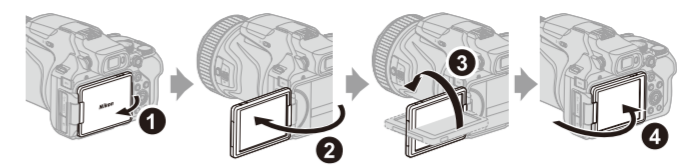
Tip: Charging with third-party AC adapters that are equipped with USB Type C connectors and are compliant with USB PD (power delivery) standards

- The camera battery can also be charged with third-party AC adapters. Use an AC adapter that complies with USB PD (power delivery) standards and is equipped with USB Type C connectors.
- Use an AC adapter that supports output of 15 W (5 V/3 A) or more.
- Use a USB cable that is Type C on both ends to connect to the camera.
- We do not guarantee that all third-party AC adapters and USB cables are able to charge the camera battery.

- Tip: Connecting to a computer to charge the camera battery**
- You can also connect the camera to a computer using the supplied USB cable to charge the battery.
 - When connected to a computer, the camera turns on and starts charging. If the camera is turned off, charging stops.
 - Depending on the model and product specifications, some computers will not supply current to charge the battery.

Opening the monitor

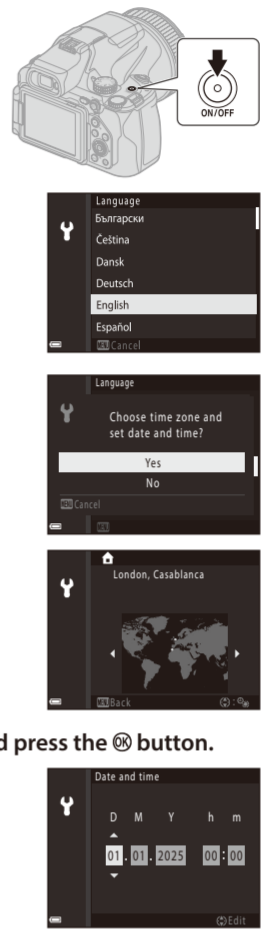
When moving the monitor, do not apply excessive force and move slowly within the monitor's adjustable range so that the connection will not be damaged.



Camera setup

When the camera is turned on for the first time, screens to set the display language and camera clock are displayed.

- 1 Press the power switch to turn on the camera.
- 2 Press \blacktriangle on the multi selector to highlight a language and press the \otimes button to select.
- The displayed languages vary depending on the country or region.
- 3 Select [Yes] and press the \otimes button.
- 4 Highlight your home time zone and press the \otimes button.
- To turn daylight saving time on, press \blacktriangle ; ON will be displayed above the map. Press \blacktriangledown to turn daylight saving time off.
- 5 Press \blacktriangle to select a date format and press the \otimes button.
- 6 Set the date and time.
- Press \blacktriangle to highlight items and \blacktriangle to change them.
- Select the minute field and press the \otimes button to confirm the setting.
- 7 When prompted, press \blacktriangle to highlight [Yes] and press the \otimes button.
- Setup is complete and the camera switches to the shooting screen.

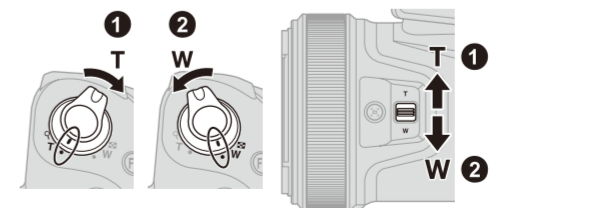


Basic operations of shooting and playback

Shooting still images

A (auto) mode is used here as an example. A (auto) mode enables you to perform general shooting in a variety of shooting conditions.

- 1 Rotate the mode dial to A .
- 2 Check the battery level (1) and number of exposures remaining (2) on the shooting screen.
- 3 Hold the camera steady.
- Keep fingers and other objects away from the lens, flash, AF-assist illuminator, eye sensor, microphone, and speaker.
- 4 Frame the picture.
- Move the zoom control or the side zoom control to change the zoom lens position.
- To zoom in, move toward T (1).
- To zoom out, move toward W (2).



- 5 Press the shutter-release button halfway.
- To press the shutter-release button "halfway" means to press and hold the button at the point where you feel a slight resistance.
- 6 Without lifting your finger, press the shutter-release button all the way down.



☒ **Using a tripod**

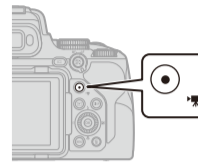
After attaching the camera to a tripod, make sure that the camera does not fall over when zooming the lens in or out. Extend one leg of the tripod toward the subject and the other two legs toward you at an equal distance.

When zoom is at wide-angle position

When zoom is at telephoto position

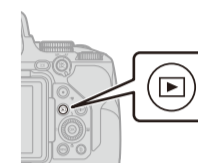
Recording movies

Display the shooting screen and press the \bullet (movie-record) button to start recording a movie. Press the \bullet (movie-record) button again to end recording.



Playing back images

- 1 Press the \square (playback) button to enter full-frame playback mode.
- 2 Use the multi selector to select an image to display.
- Use the multi selector \blacktriangle to display the previous image, or \blacktriangledown to display the next image.
- Press and hold down \blacktriangle to scroll through the images quickly.
- To play back a recorded movie, press the \otimes button.
- To return to shooting mode, press the \square button or shutter-release button.



Caring for the camera

- ☒ **Storage**
- Remove the battery if the camera will not be used for an extended period. To prevent mold or mildew, take the camera out of storage at least once a month. Turn the camera on and release the shutter a few times before putting the camera away again.
- Do not store the camera in any of the following locations:
- Places that are poorly ventilated or subject to humidity of over 60%
 - Places exposed to temperatures above 50°C (122°F) or below -10°C (14°F)
 - Places next to equipment that produces strong electromagnetic fields, such as televisions or radios

Troubleshooting

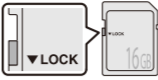

You may be able to resolve any issues with the camera by following the steps below. Check this list before consulting your retailer or Nikon-authorized service representative.





- | | |
|--------|---|
| STEP 1 | <input checked="" type="checkbox"/> Check the list of common problems.
Common problems and solutions are listed in the troubleshooting section of the <i>Reference Guide</i> . |
| STEP 2 | Turn the camera off and remove the battery, then wait about a minute, re-insert the battery and turn the camera on.
<input checked="" type="checkbox"/> The camera may continue to write data to the memory card after shooting. Wait at least a minute before removing the battery. |
| STEP 3 | Search Nikon websites. <ul style="list-style-type: none">• For support information and answers to frequently asked questions, visit the website for your country or region (see "Nikon user support" at the top left corner of this page).• To download the latest firmware for your camera, visit: https://downloadcenter.nikonimglib.com/ |
| STEP 4 | Consult a Nikon-authorized service representative. |

For your safety
<p>To prevent damage to property or injury to yourself or to others, read “For your safety” in its entirety before using this product.</p> <p>After reading these safety instructions, keep them readily accessible for future reference.</p>
<p>⚠ DANGER: Failure to observe the precautions marked with this icon carries a high risk of death or severe injury.</p> <p>⚠ WARNING: Failure to observe the precautions marked with this icon could result in death or severe injury.</p> <p>⚠ CAUTION: Failure to observe the precautions marked with this icon could result in injury or property damage.</p>
⚠ WARNING
<p>Do not use while walking or operating a vehicle.</p> <p>Failure to observe this precaution could result in accidents or other injury.</p> <p>Do not disassemble or modify this product. Do not touch internal parts that become exposed as the result of a fall or other accident.</p> <p>Failure to observe these precautions could result in electric shock or other injury.</p> <p>Should you notice any abnormalities such as the product producing smoke, heat, or unusual odors, immediately remove the battery or disconnect the power source.</p> <p>Continued operation could result in fire, burns or other injury.</p> <p>Keep dry. Do not handle with wet hands. Do not handle the plug with wet hands.</p> <p>Failure to observe these precautions could result in fire or electric shock.</p> <p>Do not let your skin remain in prolonged contact with this product while it is on or plugged in.</p> <p>Failure to observe this precaution could result in low-temperature burns.</p> <p>Do not use this product in the presence of flammable dust or gas such as propane, gasoline or aerosols.</p> <p>Failure to observe this precaution could result in explosion or fire.</p> <p>Do not aim the flash at the operator of a motor vehicle.</p> <p>Failure to observe this precaution could result in accidents.</p> <p>Keep this product out of reach of children.</p> <p>Failure to observe this precaution could result in injury or product malfunction. In addition, note that small parts constitute a choking hazard. <u>Should a child swallow any part of this product, seek immediate medical attention.</u></p> <p>Do not entangle, wrap or twist the straps around your neck.</p> <p>Failure to observe this precaution could result in accidents.</p> <p>Do not use batteries, chargers, AC adapters, or USB cables not specifically designated for use with this product. When using batteries, chargers, AC adapters, and USB cables designated for use with this product, do not:</p> <ul style="list-style-type: none"> - Damage, modify, forcibly tug or bend the cords or cables, place them under heavy objects, or expose them to heat or flame. - Use travel converters or adapters designed to convert from one voltage to another or with DC-to-AC inverters. <p>Failure to observe these precautions could result in fire or electric shock.</p> <p>Do not handle the plug when charging the product or using the AC adapter during thunderstorms.</p> <p>Failure to observe this precaution could result in electric shock.</p> <p>Dust on or near the metal parts of the plug should be removed with a dry cloth. Continued use could result in fire.</p> <p>Do not handle with bare hands in locations exposed to extremely high or low temperatures.</p> <p>Failure to observe this precaution could result in burns or frostbite.</p>
⚠ CAUTION
<p>Do not leave the lens pointed at the sun or other strong light sources.</p> <p>Light focused by the lens could cause fire or damage to product's internal parts. When shooting backlit subjects, keep the sun well out of the frame. Sunlight focused into the camera when the sun is close to the frame could cause fire.</p> <p>Turn this product off when its use is prohibited. Disable wireless features when the use of wireless equipment is prohibited.</p> <p>The radio-frequency emissions produced by this product could interfere with equipment onboard aircraft or in hospitals or other medical facilities.</p> <p>Remove the battery and disconnect the AC adapter if this product will not be used for an extended period.</p> <p>Failure to observe this precaution could result in fire or product malfunction.</p> <p>Do not touch moving parts of the lens or other moving parts.</p> <p>Failure to observe this precaution could result in injury.</p> <p>Do not fire the flash in contact with or in close proximity to the skin or objects.</p> <p>Failure to observe this precaution could result in burns or fire.</p> <p>Do not raise the built-in flash when using a flash unit mounted on the camera accessory shoe.</p> <p>Failure to observe this precaution could result in fire or product malfunction.</p> <p>Do not leave the product where it will be exposed to extremely high temperatures for an extended period, such as in an enclosed automobile or in direct sunlight.</p> <p>Failure to observe this precaution could result in fire or product malfunction.</p> <p>Do not transport the camera with a tripod or similar accessory attached.</p> <p>Failure to observe this precaution could result in injury or product malfunction.</p> <p>Keep the product at least 5 cm (2.0 in.) from pacemakers and other medical devices.</p> <p>Medical devices in close proximity could be affected by the magnet or magnets in the product.</p>
⚠ DANGER (Batteries)
<p>Do not mishandle batteries.</p> <p>Failure to observe the following precautions could result in the batteries leaking, overheating, rupturing, or catching fire:</p> <ul style="list-style-type: none"> - Use only rechargeable batteries approved for use in this product. - Do not expose batteries to flame or excessive heat. - Do not disassemble. - Do not short-circuit the terminals by touching them to necklaces, hairpins, or other metal objects. - Do not expose batteries or the products in which they are inserted to powerful physical shocks. - Do not step on batteries, pierce them with nails, or strike them with hammers. <p>Charge only as indicated.</p> <p>Failure to observe this precaution could result in the batteries leaking, overheating, rupturing, or catching fire.</p> <p>If battery liquid comes into contact with the eyes, rinse with plenty of clean water and seek immediate medical attention.</p> <p>Delaying action could result in eye injuries.</p> <p>Follow the instructions of airline personnel.</p> <p>Batteries left unattended at high altitudes in an unpressurized environment may leak, overheat, rupture, or catch fire.</p>
⚠ WARNING (Batteries)
<p>Keep batteries out of reach of children.</p> <p>Should a child swallow a battery, seek immediate medical attention.</p> <p>Keep batteries out of reach of household pets and other animals.</p> <p>The batteries could leak, overheat, rupture, or catch fire if bitten, chewed, or otherwise damaged by animals.</p> <p>Do not immerse batteries in water or expose to rain.</p> <p>Failure to observe this precaution could result in fire or product malfunction. Immediately dry the product with a towel or similar object should it become wet.</p> <p>Discontinue use immediately should you notice any changes in the batteries, such as discoloration or deformation. Cease charging EN-EL20a rechargeable batteries if they do not charge in the specified period of time.</p> <p>Failure to observe these precautions could result in the batteries leaking, overheating, rupturing, or catching fire.</p> <p>When batteries are no longer needed, insulate the terminals with tape.</p> <p>Overheating, rupture, or fire may result should metal objects come into contact with the terminals.</p>

⚠ WARNING (Batteries)
<p>If battery liquid comes into contact with a person's skin or clothing, immediately rinse the affected area with plenty of clean water.</p> <p>Failure to observe this precaution could result in skin irritation.</p>
Notices
<ul style="list-style-type: none"> No part of the documentation included with this product may be reproduced, transmitted, transcribed, stored in a retrieval system, or translated into any language in any form, by any means, without Nikon's prior written permission. Illustrations and screen content shown in this documentation may differ from the actual product. Nikon reserves the right to change the appearance and specifications of the hardware and software described in this documentation at any time and without prior notice. Nikon will not be held liable for any damages resulting from the use of this product. While every effort has been made to ensure that the information in this documentation is accurate and complete, we would appreciate it were you to bring any errors or omissions to the attention of the Nikon representative in your area (address provided separately). <p>Notice concerning prohibition of copying or reproduction</p> <p>Note that simply being in possession of material that has been digitally copied or reproduced by means of a scanner, digital camera, or other device may be punishable by law.</p> <ul style="list-style-type: none"> Items prohibited by law from being copied or reproduced <p>Do not copy or reproduce paper money, coins, securities, government bonds, or local government bonds, even if such copies or reproductions are stamped "Sample". The copying or reproduction of paper money, coins, or securities which are circulated in a foreign country is prohibited.</p> <p>Unless the prior permission of the government has been obtained, the copying or reproduction of unused postage stamps or post cards issued by the government is prohibited.</p> <p>The copying or reproduction of stamps issued by the government and of certified documents stipulated by law is prohibited.</p> <ul style="list-style-type: none"> Cautions on certain copies and reproductions <p>The government has issued cautions on copies or reproductions of securities issued by private companies (shares, bills, checks, gift certificates, etc.), commuter passes, or coupon tickets, except when a minimum of necessary copies are to be provided for business use by a company. Also, do not copy or reproduce passports issued by the government, licenses issued by public agencies and private groups, ID cards, and tickets, such as passes and meal coupons.</p> <ul style="list-style-type: none"> Comply with copyright notices <p>Under copyright law, photographs or recordings of copyrighted works made with the camera cannot be used without the permission of the copyright holder. Exceptions apply to personal use, but note that even personal use may be restricted in the case of photographs or recordings of exhibits or live performances.</p> <p>Nikon brand accessories</p> <p>This product is designed to be used with Nikon brand accessories. Nikon is not responsible for any damage caused by accidents such as malfunctions or ignition that are clearly attributable to the use of non-Nikon accessories. In these cases, repair of Nikon products is not covered under your Nikon warranty. Please understand this in advance.</p> <p>Batteries</p> <p>EN-EL20a rechargeable Li-ion batteries are dedicated for use only with Nikon products. Nikon is not responsible for any malfunctions or accidents resulting from use with chargers or other products that are not compatible with the EN-EL20a.</p> <ul style="list-style-type: none"> Beware of counterfeit batteries. Such batteries do not allow the camera to perform to its full potential and may cause the batteries to overheat, ignite, rupture or leak. An EN-EL20a Rechargeable Li-ion Battery bears a Nikon holographic seal indicating that it is a genuine Nikon product.
<p>● Disposing of data storage devices</p> <p>Please note that deleting images or formatting data storage devices such as memory cards does not completely erase the original image data. Deleted files can sometimes be recovered from discarded storage devices using commercially available software, potentially resulting in the malicious use of personal image data. Ensuring the privacy of such data is the user's responsibility.</p> <p>Before discarding a data storage device or transferring ownership to another person, make sure to reset all of the camera's settings in the setup menu ➔ [Reset all]. After resetting, erase all data in the device using commercial deletion software, or format the device in the setup menu ➔ [Format card], then completely refill it with images containing no private information (for example, images of empty sky). Care should be taken to avoid injury or damage to property when physically destroying memory cards.</p>
<p>✔ Before taking important pictures</p> <p>Before taking pictures on important occasions (such as at weddings or before taking the camera on a trip), take a test shot to ensure that the camera is functioning normally. Nikon will not be held liable for damages or lost profits that may result from product malfunction.</p> <p>✔ Life-long learning</p> <p>As part of Nikon's "Life-long learning" commitment to ongoing product support and education, continually-updated information is available on-line at the following sites:</p> <ul style="list-style-type: none"> • For users in the U.S.A.: https://www.nikonusa.com/ • For users in Canada: https://www.nikon.ca/ • For users in Mexico: https://www.nikon.com.mx/ • For users in Latin America: https://www.nikonamericalatina.com/ • For users in Europe: https://www.nikoneurope.com • For users in Asia, Oceania, the Middle East, and Africa: https://www.nikon-asia.com/ <p>Visit these sites to keep up-to-date with the latest product information, tips, answers to frequently-asked questions (FAQs), and general advice on digital imaging and photography. Additional information may be available from the Nikon representative in your area. See the following URL for contact information: https://imaging.nikon.com/</p>

Caring for the product
<p>■ The camera</p> <ul style="list-style-type: none"> ● Do not apply strong impact to the camera <p>The product may malfunction if subjected to strong shock or vibration. In addition, do not touch or apply force to the lens.</p> <ul style="list-style-type: none"> ● Keep dry <p>The device will be damaged if immersed in water or subjected to high humidity.</p> <ul style="list-style-type: none"> ● Do not disassemble <p>Do not, under any circumstances, disassemble the camera because it is composed of many precise circuits.</p> <ul style="list-style-type: none"> ● Avoid sudden changes in temperature <p>Taking the camera from a warm to a cold environment or <i>vice versa</i> may cause damaging condensation inside and outside the camera. Place the camera in a sealed bag or plastic case before taking it across a temperature boundary. The camera can be taken from the bag or case once it has had time to adjust to the new temperature.</p> <ul style="list-style-type: none"> ● Keep away from strong magnetic fields <p>Do not use or store this device in the vicinity of equipment that generates strong electromagnetic radiation or magnetic fields. Doing so could result in loss of data or camera malfunction.</p> <ul style="list-style-type: none"> ● Do not point the lens at the sun <p>Avoid pointing the lens at the sun or other strong light sources when shooting or when leaving the camera unattended without a lens cap. Strong light sources such as sunlight are concentrated through the lens, which may cause deformation of the internal parts of the lens or discoloration or burn-in on the image sensor. The camera may be damaged even when the lens is pointed toward the sun for a few seconds, particularly when the lens is in a telephoto position.</p> <p>The camera may not be able to perform exposure control when the internal parts of the lens are deformed.</p> <p>Unevenness may appear in images when discoloration or burn-in occurs on the image sensor.</p> <p>It is recommended that you attach the lens cap when you are not using the camera.</p> <ul style="list-style-type: none"> ● Lasers and other bright light sources <p>Do not direct lasers or other extremely bright light sources toward the lens, as this could damage the camera's image sensor.</p> <ul style="list-style-type: none"> ● Turn the product off before removing or disconnecting the power source or memory card <p>Do not remove the battery while the product is on, or while images are being saved or deleted. Forcibly cutting power in these circumstances could result in loss of data or in damage to the memory card or internal circuitry.</p> <ul style="list-style-type: none"> ● Notes about the monitor <ul style="list-style-type: none"> • Monitors (including electronic viewfinders) are constructed with extremely high precision; at least 99.99% of pixels are effective, with no more than 0.01% being missing or defective. Hence while these displays may contain pixels that are always lit (white, red, blue, or green) or always off (black), this is not a malfunction and has no effect on images recorded with the device. • Images in the monitor may be difficult to see under bright lighting. • Do not apply pressure to the monitor, as this could cause damage or malfunction. Should the monitor break, care should be taken to avoid injury caused by broken glass and to prevent the liquid crystal from the display touching the skin or entering the eyes or mouth. <p>■ The battery</p> <ul style="list-style-type: none"> ● Precautions for use <ul style="list-style-type: none"> • Note that the battery may become hot after use. • Do not use the battery at ambient temperatures below 0°C (32°F) or above 40°C (104°F) as this could cause damage or malfunction. • If you notice any abnormalities such as excessive heat, smoke, or an unusual smell coming from the battery, immediately discontinue use and consult your retailer or Nikon-authorized service representative. • After removing the battery from the camera, put the battery in a plastic bag, etc. in order to insulate it. ● Charging the battery <p>Check the battery level before using the camera and replace or charge the battery if necessary.</p> <ul style="list-style-type: none"> • Charge the battery indoors with an ambient temperature of 5°C to 35°C (41°F to 95°F) before use. • A high battery temperature may prevent the battery from charging properly or completely, and may reduce battery performance. Note that the battery may become hot after use; wait for the battery to cool before charging. When charging the battery inserted into this camera using the AC adapter or a computer, the battery is not charged at battery temperatures below 0°C (32°F) or above 50°C (122°F). • Do not continue charging once the battery is fully charged as this will result in reduced battery performance. • The battery temperature may increase during charging. However, this is not a malfunction. ● Carrying spare batteries <p>Whenever possible, carry fully charged spare batteries when taking pictures on important occasions.</p> <ul style="list-style-type: none"> ● Using the battery when cold <p>On cold days, the capacity of batteries tends to decrease. If an exhausted battery is used at a low temperature, the camera may not turn on. Keep spare batteries in a warm place and exchange as necessary. Once warned, a cold battery may recover some of its charge.</p> <ul style="list-style-type: none"> ● Battery terminals <p>Dirt on the battery terminals may prevent the camera from functioning. Should the battery terminals become dirty, wipe them off with a clean, dry cloth before use.</p> <ul style="list-style-type: none"> ● Charging an exhausted battery <p>Turning the camera on or off while an exhausted battery is inserted in the camera may result in reduced battery life. Charge the exhausted battery before use.</p> <ul style="list-style-type: none"> ● Storing the battery <ul style="list-style-type: none"> • Always remove the battery from the camera when it is not being used. Minute amounts of current are drawn from the battery while it is in the camera, even when not in use. This may result in excessive battery drain and complete loss of function. • Batteries in long-term storage should be charged to about 50% at least once a year. Do not charge the battery to 100% before returning it to storage. A fully-exhausted battery will charge to around 50% in about half the time needed to charge it to 100%. • Put the battery in a plastic bag, etc. in order to insulate it and store it in a cool place. The battery should be stored in a dry location with an ambient temperature of 15°C to 25°C (59°F to 77°F). Do not store the battery in hot or extremely cold locations. ● Battery life <p>A marked drop in the time a fully charged battery retains its charge, when used at room temperature, indicates that the battery needs to be replaced. Purchase a new battery.</p> <ul style="list-style-type: none"> ● Recycling used batteries <p>Recycle rechargeable batteries in accord with local regulations, being sure to first insulate the terminals with tape.</p>

■ Memory cards
<ul style="list-style-type: none"> ● Precautions for use <ul style="list-style-type: none"> • Use only Secure Digital memory cards. • Be sure to follow the precautions described in the documentation included with the memory card. • If the write-protect switch of the memory card is locked, you cannot shoot, delete images, or format the memory card. • Do not put labels or stickers on memory cards.

<ul style="list-style-type: none"> ● Formatting <ul style="list-style-type: none"> • Do not format the memory card using a computer. • The first time you insert a memory card that has been used in another device into this camera, be sure to format it with this camera. • We recommend formatting new memory cards with this camera before using them with this camera. • Note that formatting a memory card permanently deletes all images and other data on the memory card. • Be sure to make copies of any images you wish to keep before formatting the memory card. • If the message [Card is not formatted. Format card?] is displayed when the camera is turned on, the memory card must be formatted. If there is data that you do not want to delete, select [No]. Copy the necessary data to a computer, etc. If you want to format the memory card, select [Yes]. The confirmation dialog will be displayed. To start formatting, press the  button. • Do not perform the following during formatting, while data is being written to or deleted from the memory card, or during data transfer to a computer. Failure to observe this precaution could result in the loss of data or in damage to the camera or memory card: <ul style="list-style-type: none"> - Open the battery-chamber/memory card slot cover to remove/insert the battery or memory card. - Turn off the camera. - Disconnect the AC adapter.
Trademarks and licenses
<ul style="list-style-type: none"> • Windows is either a registered trademark or a trademark of Microsoft Corporation in the United States and/or other countries. • The <i>Bluetooth</i>® word mark and logo are registered trademarks owned by Bluetooth SIG, Inc., and any use of such marks by Nikon is under license. • Apple®, App Store®, the Apple logos, iPhone®, iPad®, Mac, and macOS are trademarks of Apple Inc. registered in the U.S. and/or other countries. • Android, Google Play and the Google Play logo are trademarks of Google LLC. The Android robot is reproduced or modified from work created and shared by Google and used according to terms described in the Creative Commons 3.0 Attribution License. • iOS is a trademark or registered trademark of Cisco Systems, Inc., in the United States and/or other countries and is used under license. • The SD, SDHC, and SDXC logos are trademarks of SD-3C, LLC. • HDMI, HDMI logo and High-Definition Multimedia Interface are trademarks or registered trademarks of HDMI Licensing, LLC. • Wi-Fi and the Wi-Fi logo are trademarks or registered trademarks of the Wi-Fi Alliance. • All other trade names mentioned in this document or the other documentation provided with your Nikon product are the trademarks or registered trademarks of their respective holders. • Use of the Made for Apple badge means that an accessory has been designed to connect specifically to the Apple products identified in the badge, and has been certified by the developer to meet Apple performance standards. Apple is not responsible for the operation of this device or its compliance with safety and regulatory standards. Please note that the use of this accessory with an Apple product may affect wireless performance. • The software for this product includes open-source software copyrighted by third parties. The terms of the licenses for this open-source software may be found in the <i>Reference Guide</i>. https://downloadcenter.nikonimglib.com/

Compliance information
<p>■ Notes about wireless communication function</p> <ul style="list-style-type: none"> ● Use restriction <p>The use of wireless devices may be prohibited in some countries or regions. Familiarize yourself with and obey all applicable local regulations.</p> <p>The Bluetooth transmitter in this device operates in the 2.4 GHz band.</p> <ul style="list-style-type: none"> ● Security note <p>Although one of the benefits of this product is that it allows others to freely connect for the wireless exchange of data anywhere within its range, the following may occur if security is not enabled:</p> <ul style="list-style-type: none"> • Data theft: Malicious third-parties may intercept wireless transmissions to steal user IDs, passwords, and other personal information. • Unauthorized access: Unauthorized users may gain access to the network and alter data or perform other malicious actions. Note that due to the design of wireless networks, specialized attacks may allow unauthorized access even when security is enabled. • Unsecured networks: Connecting to open networks may result in unauthorized access. Use secure networks only. • Configuring the settings of the security features that are normally included in Wi-Fi (wireless LAN) products will reduce the possibility that the problems described above will occur. • You should fully understand the problems that may occur if you use a product without configuring security settings. It is your responsibility to configure security settings at your own discretion before using the product. ● Precautions when exporting or carrying this product abroad <p>This product is controlled by the United States Export Administration Regulations (EAR). The permission of the United States government is not required for export to countries other than the following, which as of this writing are subject to embargo or special controls: Cuba, Iran, North Korea, Sudan, and Syria (list subject to change).</p> <p>■ Notice for customers in Europe and in countries complying with the EU legislation</p> <ul style="list-style-type: none"> ● Declaration of conformity <p>Hereby, Nikon Corporation declares that the radio equipment type COOLPIX P1100 is in compliance with Directive 2014/53/EU.</p> <p>CE</p> <p>The full text of the EU declaration of conformity is available at the following internet address: https://imaging.nikon.com/imaging/support/pdf/DoC_N2323.pdf</p> <ul style="list-style-type: none"> ● Use restriction in Europe <p>Wi-Fi</p> <ul style="list-style-type: none"> • Operating frequency: 2412–2462 MHz (1-11 channels) • Maximum output power (EIRP): 6.0 dBm <p>Bluetooth</p> <ul style="list-style-type: none"> • Operating frequency: <ul style="list-style-type: none"> - Bluetooth: 2402–2480 MHz - Bluetooth Low Energy: 2402–2480 MHz • Maximum output power (EIRP): <ul style="list-style-type: none"> - Bluetooth: 4.2 dBm - Bluetooth Low Energy: 4.2 dBm <ul style="list-style-type: none"> ● Standby power consumption <p>This product complies with the implementation measures (standby and off mode, and electric power consumption of electrical and electronic household and office equipment) adopted under the Ecodesign Directive 2009/125/EC.</p> <p>Power consumption</p> <ul style="list-style-type: none"> • Off mode: 0.1 W • Standby mode: 0.1 W <p>Default transition time</p> <ul style="list-style-type: none"> • Off mode: 33 minutes • Standby mode: 30 minutes <ul style="list-style-type: none"> ● When using a charging AC adapter <p>When using a charging AC adapter to charge this camera, check that it conforms to the following standards.</p> <p>The power delivered by the charger must be between min 2.5 Watts required by the radio equipment, and max 4.5 Watts in order to achieve the maximum charging speed.</p> <p></p> <p>● Disposal information</p> <p>CAUTION: RISK OF EXPLOSION IF BATTERY IS REPLACED BY AN INCORRECT TYPE. DISPOSE OF USED BATTERIES ACCORDING TO THE INSTRUCTIONS.</p>
<p>This symbol indicates that electrical and electronic equipment is to be collected separately.</p> <p></p> <p></p> <ul style="list-style-type: none"> • This product is designated for separate collection at an appropriate collection point. Do not dispose of as household waste. • Separate collection and recycling help conserve natural resources and prevent negative consequences for human health and the environment that might result from incorrect disposal. • For more information, contact the retailer or the local authorities in charge of waste management. <p>This symbol on the battery indicates that the battery is to be collected separately.</p> <p></p> <ul style="list-style-type: none"> • All batteries, whether marked with this symbol or not, are designated for separate collection at an appropriate collection point. Do not dispose of as household waste. • For more information, contact the retailer or the local authorities in charge of waste management.