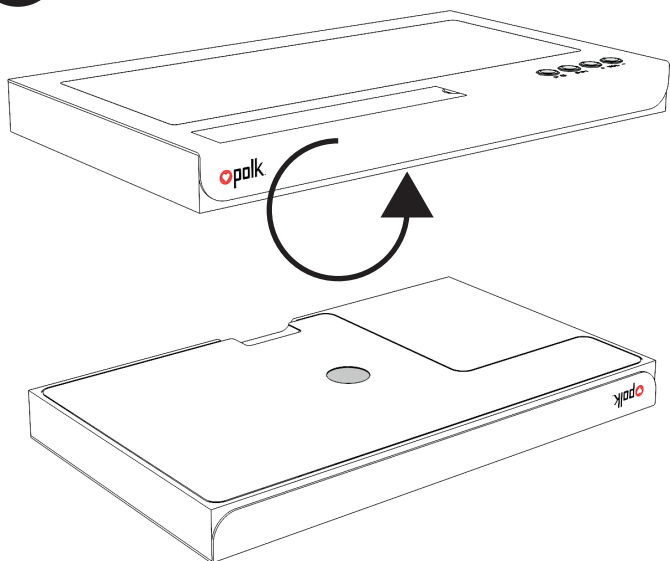
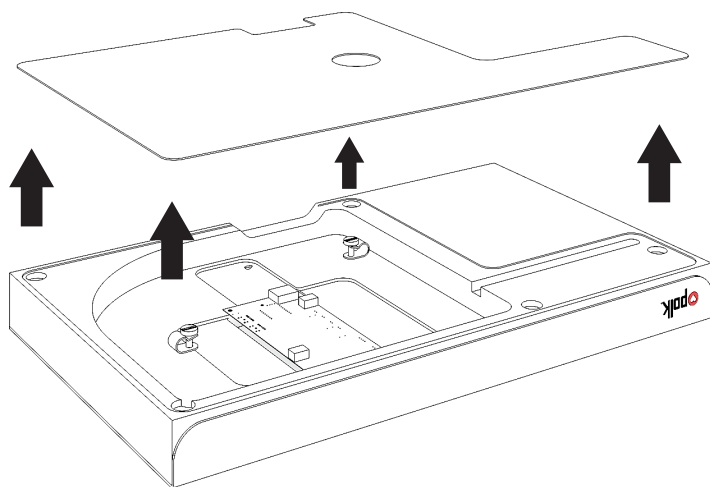


## Instruction of replacement of wires - in case of failure

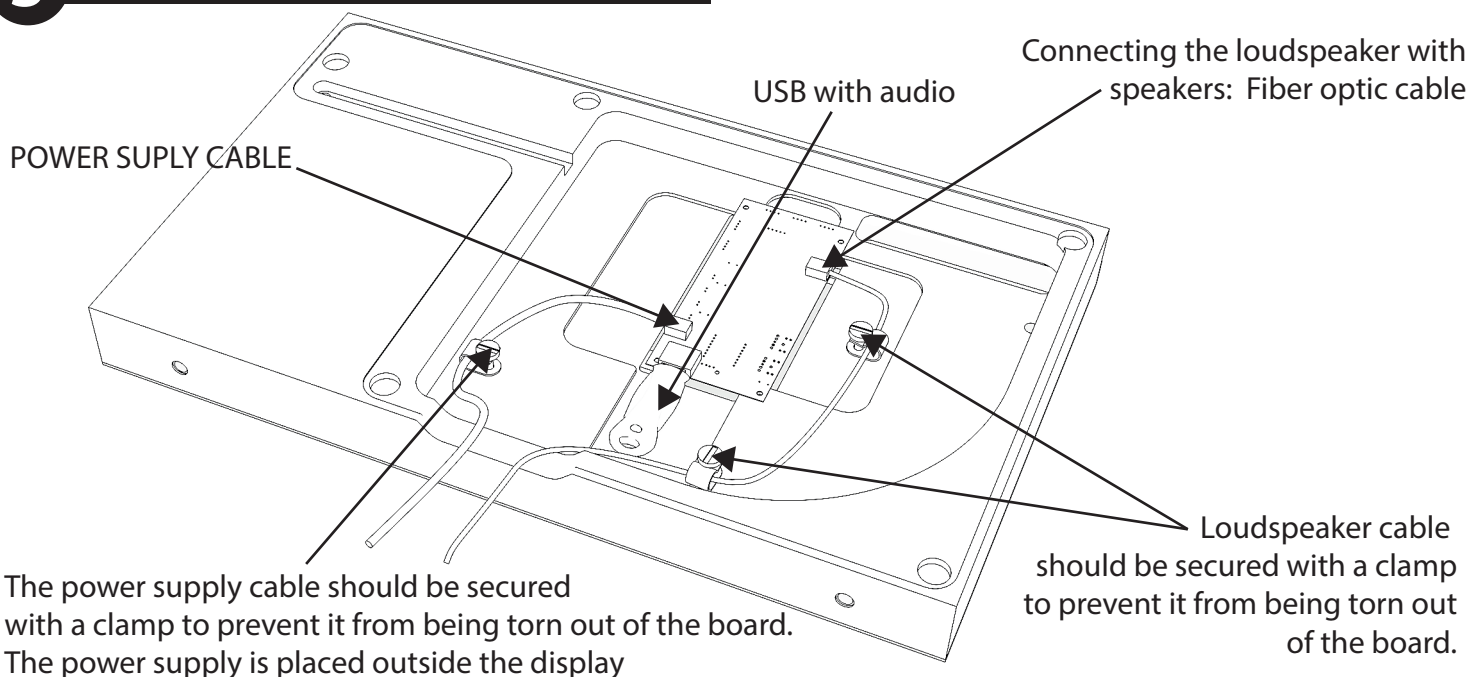
**1** turn the counter upside down



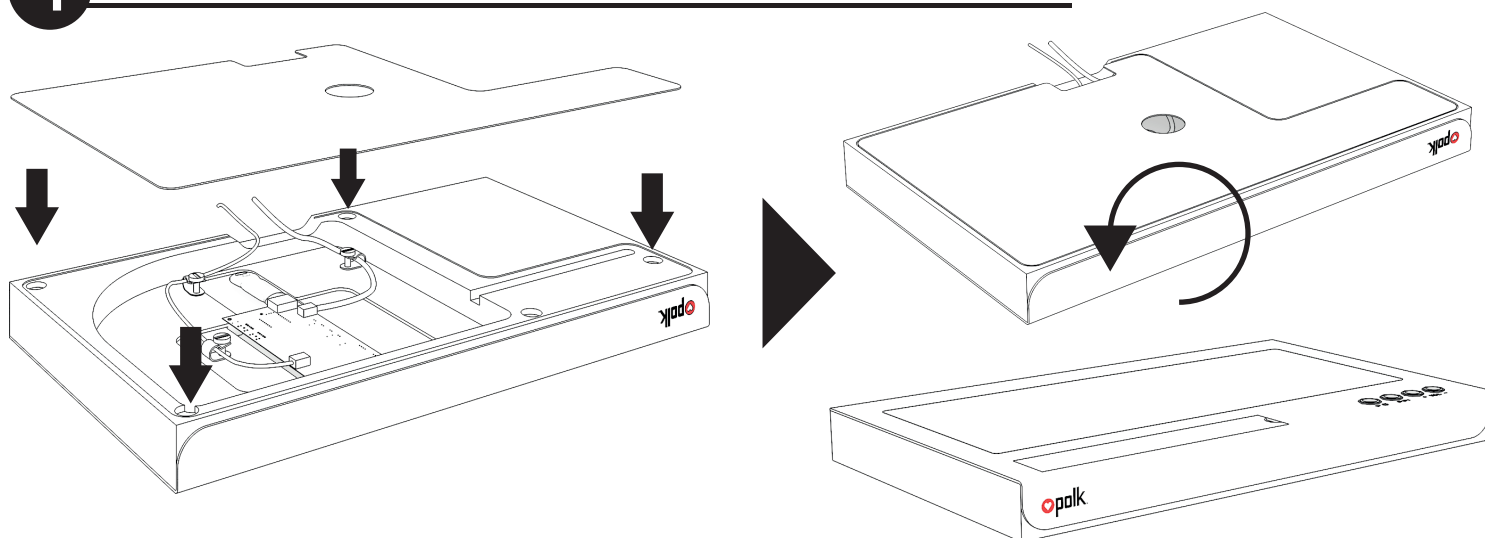
**2** remove the cover that is on the magnets



**3** Replacement of wires - in case of failure only

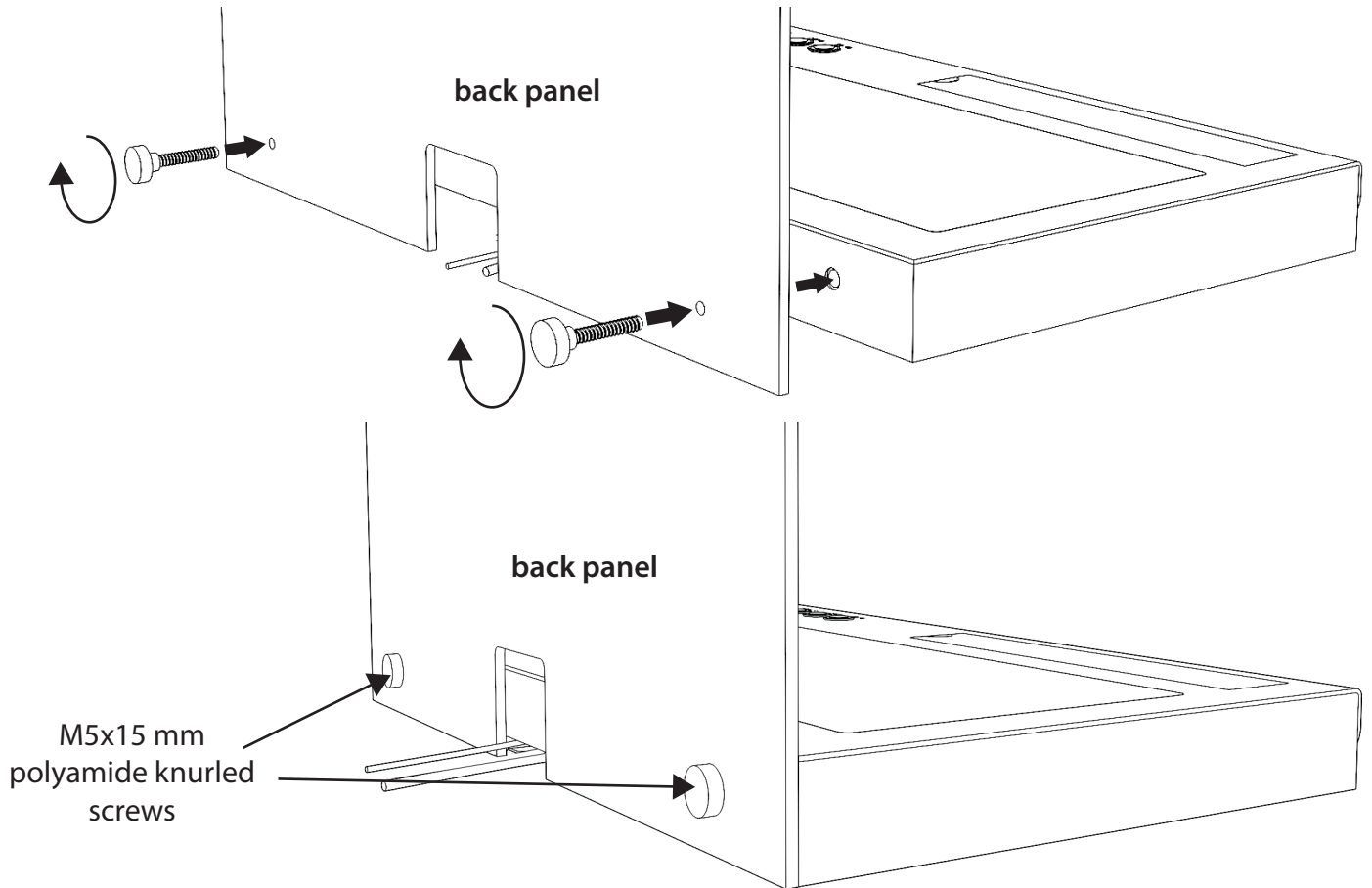


**4** put the lid on the magnets and turn the display to its original position

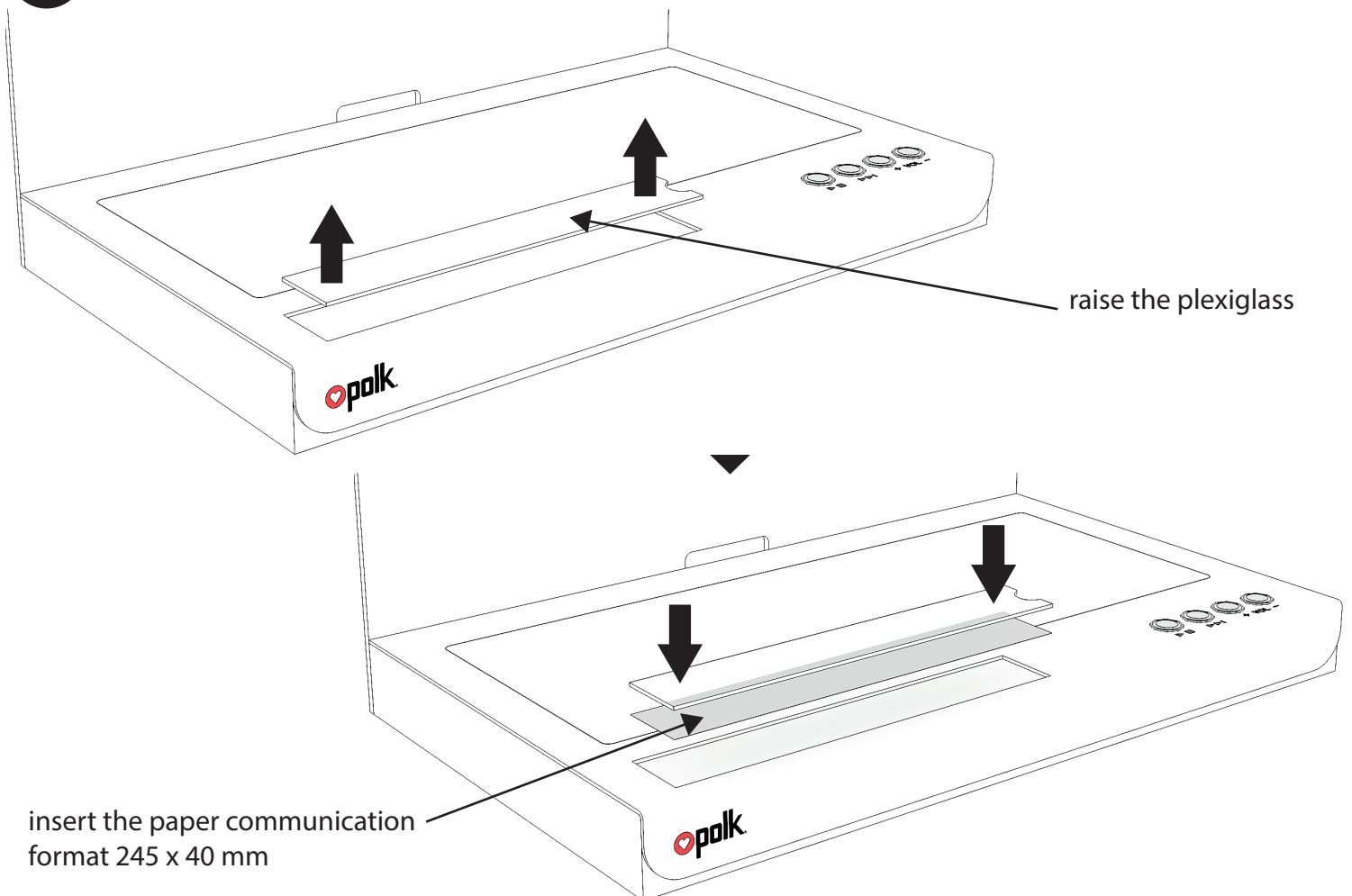


## Instructions for mounting the back panel to the display

### 1 screwing back with polyamide knurled screws M5x15 mm



### 2 Communication exchange



**This section describes how to enter/exit the Demo/Retail mode on Polk MagniFi Mini soundbar unit.**

In order prepare the MagniFi Mini unit for automated customer audio presentations using our lighted display you need to enter the Demo/Retail mode before connecting the unit to Optical cable of the display.

1. Connect the MagniFi Mini unit to the mains outlet and turn the **power ON**
2. Press “**Volume +**” and “**Volume –**” simultaneously for the duration as listed below in the table to enter the modes. When selecting the modes, every three seconds you will hear a sound indicating the next demo mode.

Demo Mode	Press and Hold Duration	Input	Default Volume	Min/Max Volume
<b>1 (to be used)</b>	<b>3 seconds</b>	<b>Optical</b>	<b>80%</b>	<b>0% / 100%</b>
2*	6 seconds	AUX	60%	0% / 80%
3**	9 seconds	User selected	30%	0% / 100%

\* Demo Mode #2 – DO NOT USE - is not useful in our case as the Magmini is connected via optical connection.

\*\* Demo Mode #3 – DO NOT USE - is a custom one where you can change input and default volume level. For the custom demo mode, the user sets the input and volume they want as the defaults and then they press and hold the Wi-Fi (on the back) and volume down (on top) button for 3 seconds to store the settings.

3. **To exit the Demo/Retail mode** - press “**Volume +**” and “**Volume –**” simultaneously for the duration of 12 seconds. This way you disable any demo mode again (indicated by a different sound).

**This section describes how to use the display to present sound quality of Polk MagniFi Mini unit.**

1. After the MagniFi Mini is already in Demo/Retail mode, please turn it off.
2. Make sure display is not connected to the mains outlet at this stage.
3. Place MagniFi Mini unit on the base of the display and connect the mains cable to it before you attach the backwall of the display. Backwall has special cut-out in the center to allow the cables get through it to be not visible behind the backwall.
4. Connect the optical cable sticking out of the base of display.
5. Connect the power supply of the display to the mains outlet, the lights of the display should be on now.
6. Connect the power cable of the MagniFi Mini unit to the mains to prepare unit to work on the display.
7. Using provided knurled screws attach the backwall with graphics side toward the front of display.
8. Now your setup is ready to play music

Pictures describe how to open the top of display in order to get to the music controller and USB drive containing music. In normal circumstances you will not need to do it. Although it

## POLK MagniFi Mini demonstration display setup guide

might be necessary in order the malfunction of the optical cable provided or checking the USB containing music.

**This section describes how to start audio presentations using visible control pushbuttons.**

After the initial setup you should see the Play button blinking encouraging customers to play music.

1. Press Play button once to start playing the built in on USB playlist.
2. You can now press Stop button to stop playback at any time. Music stops automatically after it reaches the end of the track.
3. To choose another track you need to press Forward button at any time.
4. Initially there is 5 tracks (licensed to Sound United to be used for this purpose) placed on the USB. Any change of music is not recommended as the tracks were chosen to present the MagniFi Mini at its best.
5. Any change of music is at your own responsibility. Please respect the copyrights at any time.

### **Additional information for store staff, promoters**

1. Please keep the units clean and tidy. Clean the display and the soundbar with dry, soft and clean antistatic cloth.
2. Please make sure the units are operational at all times during store opening hours.
3. Encourage customers to play the music using our setup.
4. In case of malfunctions of the display, please contact your Polk sales representative.

Thank you!

Sound United Team