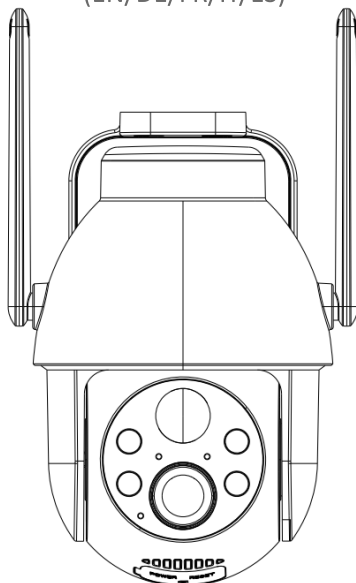




# Wireless PTZ Security Camera with Rechargeable Battery

## User Guide (EN/DE/FR/IT/ES)



E-mail: [service@cococamtech.com](mailto:service@cococamtech.com)

Website: [www.cococamtech.com](http://www.cococamtech.com)

# Contents

## Claim Your Lifetime Warranty



Thank you for choosing COCOCAM products.

We are committed to providing the best service to all our customer.

If anything has happened to your product, please contact us for a lifetime warranty.



E-mail: [service@cococamtech.com](mailto:service@cococamtech.com)

Service Hotline: +1 888 238 6566(US)

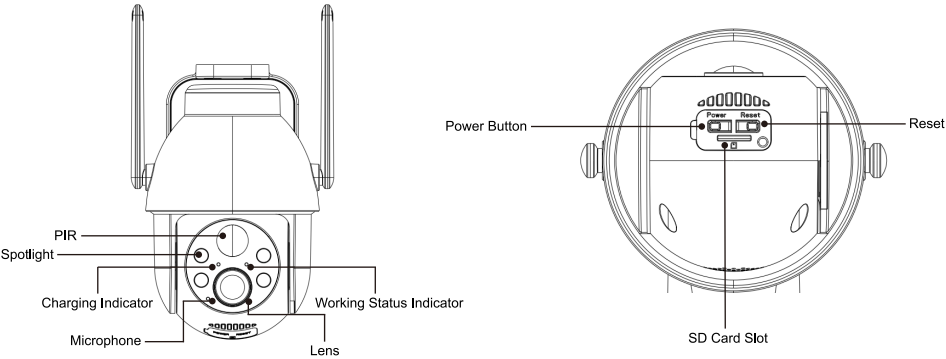
Working Hours: Mon-Fri 9am-12am, 1pm-6pm(EST)

Kind reminder: Phone service only support **English**. For other languages,  
SCSMS-20230508 please send us email or chat to us online.

# Contents

1.Product details	-----01
2.Install camera	-----02
3.Install Cococam app	-----02
4.Switch on camera	-----04
5.Add camera	-----04

# 1. Product details



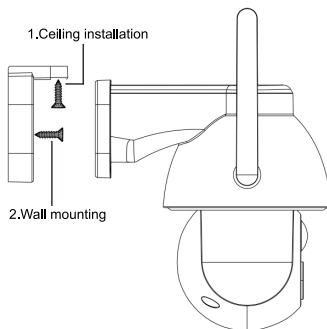
No.	Camera Buttons	Operation
1	Power Button	Press and hold the button for five seconds to turn the device on and off.
2	Power Button	Quick-press for one second to wake the camera up from standby mode.
3	Reset Key	Press and hold for five seconds to reset and restart the camera.
No.	Working Status Indicator	Operation
1	Slow blinking red	Awaiting Wi-Fi connection, start adding devices.
2	Fast blinking red	Wi-Fi connecting.
3	Solid red	Network is abnormal.
4	Solid blue	Wi-Fi connected. Camera running normally.



## 2. Install camera

Please fix the bracket, then install the camera.

1. If it is a wooden wall, you can use the nails provided with the product to fix the bracket to the wall.
2. If it is a cement wall or ceramic tile wall, please use an electric drill to drill a hole in the wall and then install the bracket with the expansion screw provided with the product.



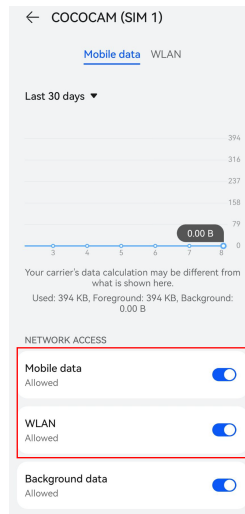
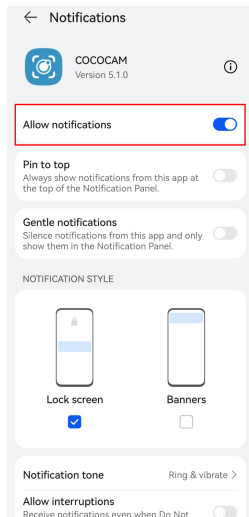
## 3. Install Cococam app

Search "Cococam" in the app store or on GooglePlay or scan the QR code to download and install the app on your phone.



**NOTE:** Please turn on two permissions below when you use this app for the first time.

1. Allow Cococam access to mobile cellular data and wireless LAN, or you will be unable to add the camera.
2. Allow Cococam to receive push messages, or the phone will not receive notifications when motion is detection or the audible alarm is triggered.



### 3.1 Register account:

New users need to register by e-mail. Click “Register” and follow the steps to complete registration and log in.

### 3.2 Help and feedback:

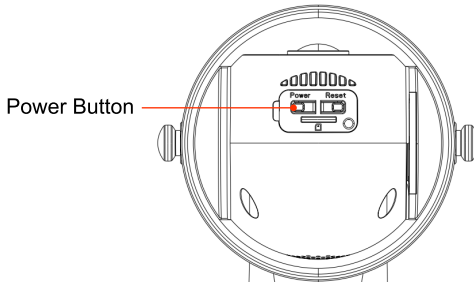
For product issues or questions, please email [service@cococamtech.com](mailto:service@cococamtech.com) with your product model number. We will reply to you within 24 hours.



Help & Feedback

## 4. Switch on camera

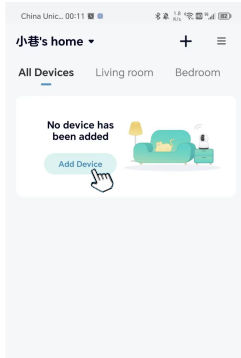
Press the power button for five seconds to turn the camera on. If it does not power on, please plug in the DC5V 1A/2A power adapter and charge the camera for 15 minutes before trying again.



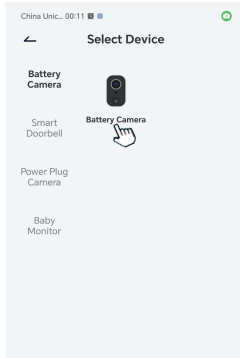
## 5. Add camera

Before Using:

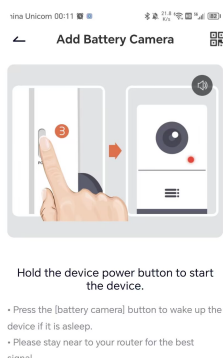
- 1) Please insert the Micro SD card before powering on, otherwise, the Micro SD card will not be detected.
- 2) Ensure your camera and your phone are within 1 to 3 feet (30 to 100cm) of the router to connect Wi-Fi.
- 3) Note: your camera does not support 5G, please use 2.4G network.



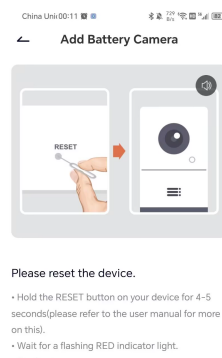
Tap '+' to Add Device



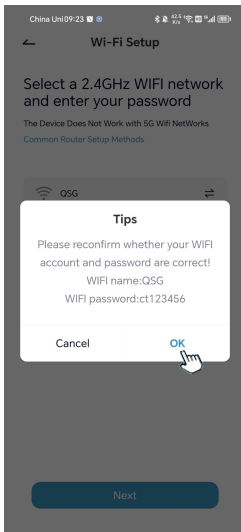
Select Battery Camera



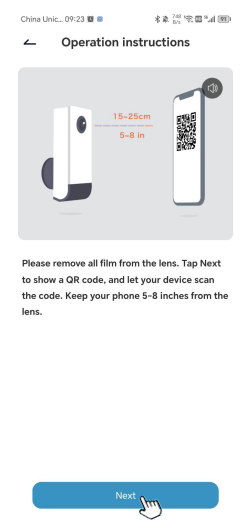
Switch on Camera



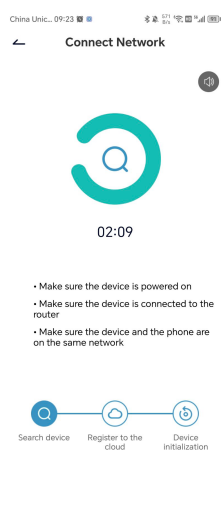
Reset Device



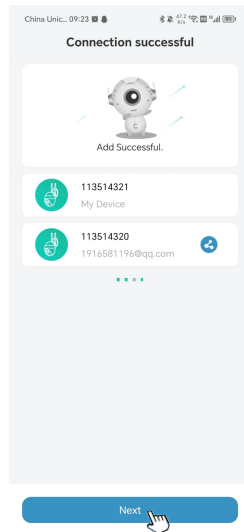
Input Wi-Fi Password



Scan QR Code



Wait for Connection



Device Added

If you need to view the detailed manual content, please scan the QR code below. Or you can also visit our official website interface <https://cococamtech.com/pages/download-center> to download detailed manuals:

