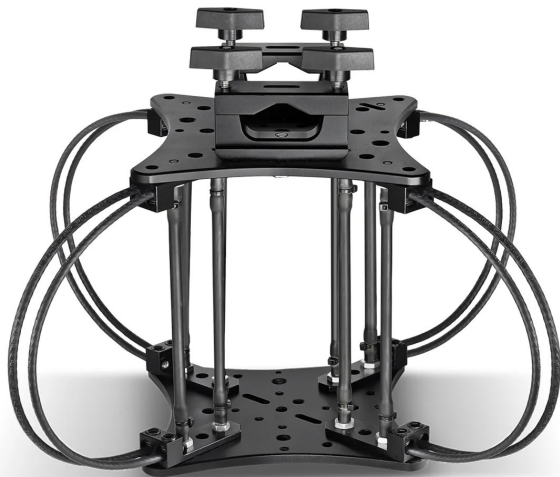


Assembly Manual



What's In The Box

Please inspect the contents of your shipped package to ensure you have received everything that is listed below.



Cheese Plate (Top)



Cheese Plate (Bottom)



2 x Clamps



8 x Elastic Tubes



2 x Allen Bolts
(Size: 1/4" x 1")



8 x Wire Configuration



Cable Tie



14mm & 15mm Spanner



2 x Washers



1mtr Elastic Tube



3/16" Allen Key

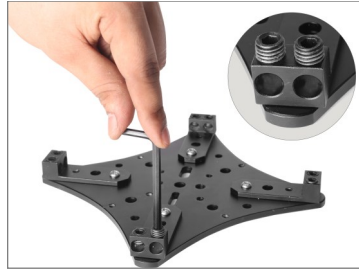
All rights reserved.

No part of this document may be reproduced, stored in a retrieval system, or transmitted by any form or by any means, electronic, mechanical, photo-copying, recording, or otherwise, except as may be expressly permitted by the applicable copyright statutes or in writing by the Publisher.

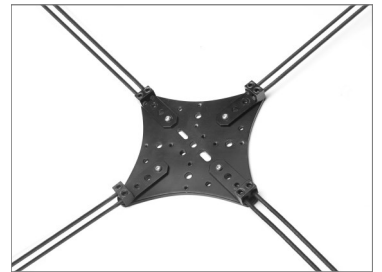
■ Aero Mount Vibration Isolator Setup

Wire Configuration Assembly

- Loosen the grub screw using a 3/16" Allen key.
- Insert the wire configuration into place.

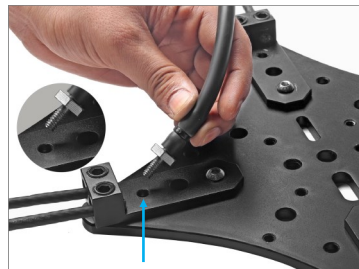


- Re-tighten the grub screw again using a 3/16" Allen key.
- Repeat the same process to insert the remaining wire configurations.

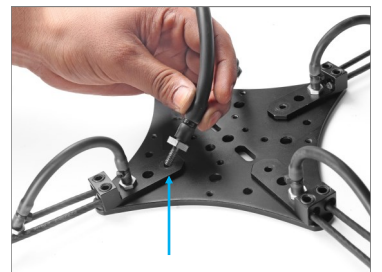


Elastic Tubes Assembly

- Insert the elastic tube into the hole while rotating it 360° for secure placement.



- Remove the Allen bolt using a 3/16" Allen key.
- Insert the other elastic tube while rotating it 360° for secure placement.



- Repeat the same process to insert the remaining elastic tubes.

NOTE: Insert 4 elastic tubes for lighter setups and 8 elastic tubes for heavier setups, according to your convenience.



Cheese Plate (Bottom) Assembly

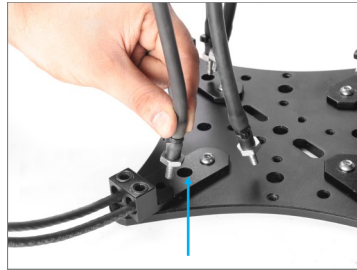
- Loosen the grub screw on the bottom cheese plate using a 3/16" Allen key.
- Next, insert the other end of the wire configuration into the bottom cheese plate.



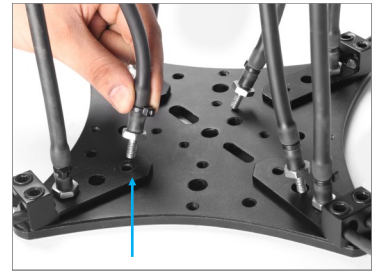
- Tighten the grub screw again using a 3/16" Allen key.
- Repeat the same process to insert the remaining wire configurations.



- Insert the elastic tube into the hole, rotating it 360° to ensure secure placement.



- Remove the Allen bolt using a 3/16" Allen key.
- Then, insert the other elastic tube while rotating it 360° for secure placement.



- Repeat the same process to insert the remaining elastic tubes.
- The wires and elastic tubes are now securely attached to the cheese plates.

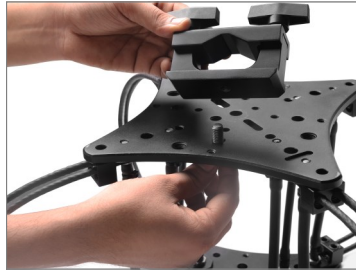


Clamps Assembly

- Loosen the clamp's bolt and remove it.



- Insert the bolt into the top cheese plate and mount the clamp.
- Then, tighten the bolt using a 14mm spanner.



- Mount the second clamp using the same process.



- Remove the knobs and take the brackets out of the clamps.



Attaching the Vibration Isolator to the Speed Rail

- Attach the Vibration Isolator with the clamps on the speed rail (**Not included**).
- Then, mount the brackets.



- Insert all the knobs and tighten them securely.



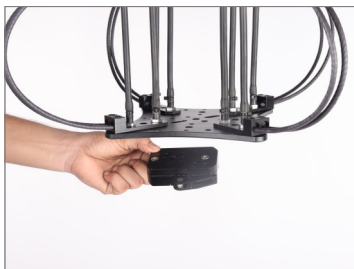
- The Vibration Isolator is now securely attached to the speed rails.

Feature: The clamps fit rods from 38mm to 50mm.



Quick Release Camera Plate Mounting

- Attach the Quick release camera plate **(Not included)** to the bottom cheese plate.
- Then, insert the Allen bolts (1/4" x 1").



- Tighten the Allen bolts using a 3/16" Allen key.
- The Quick release plate is now securely attached to the cheese plate.



Gimbal Mounting

Wide Gimbal Compatibility Multiple Mounting Threads



■ 1/4"-20 Thread

■ 3/8"-16 Thread

- Slide the Gimbal **(Not included)** into the cheese plate and secure it using the locking lever.



- Attach the Camera (Not included) to the Gimbal and securely lock it.



- Your setup is ready to use.



Adaptable Payload Support

4-Elastics Tubes: For Light Loads (0-10kg / 0-22lb)

8-Elastics Tubes: For Heavier Loads (10-20kg / 22-44lb)



**YOUR PROAIM AERO MOUNT VIBRATION ISOLATOR
ALL DRESSED UP AND READY TO GO!**



(SHOWN WITH OPTIONAL ACCESSORIES)

Warranty: We offer one year warranty for our products from date of purchase. Within this period of time, we will repair it without charge for labor or parts. Warranty doesn't cover transportation costs nor does it cover a product subjected to misuse or accidental damage. Warranty repairs are subjected to inspection and evaluation by us.

Liability: We are not liable for damage caused by products that we do not supply or from mishandling in transit, accident, misuse, neglect, lack of care of the product, or service by anyone other than our company.

Contact Us: In case of any kind of dissatisfaction, please contact us immediately and we promise our utmost support and care until you use our product.