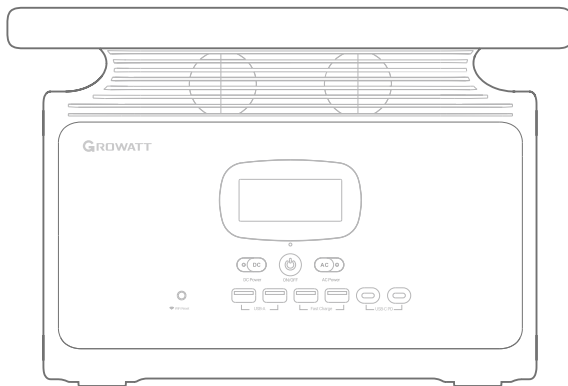




INFINITY 1300

User Manual V1.0



CATALOGUE

Important Safety Instructions	1
Package Contents	2
Getting to Know the INFINITY 1300	3
LED Display	3
How to Use	5
How to Recharge	6
Instructions for Advanced Features	10
How to Connect to APP	12
Technical Specification	16
FAQ	17
Error Codes	18
Troubleshooting	19

Important Safety Instructions

**Warning - Please read the instructions carefully before you use the product.
You must follow the precautions below when using this product.**

Usage

- Read all the instructions before using the product.
- Do not put fingers or hands into the product.
- Do not stack any heavy objects on the product.
- To reduce risk of damage to electric plug and cord, pull the plug rather than the cord when disconnecting the power pack.
- Please avoid impact, falls or severe vibrations when using the product. Do not use the product after it has been hit by a strong force or dropped from a height.
- Do not use wires or other metal objects to cause product short circuit.
- The use of unofficial component is strictly prohibited, which may result in a risk of fire, electric shock, or injury to persons. For replacement, please check the relevant purchase information on the Growatt official website (<https://www.growattportable.com>). Growatt is not responsible for product accidents and malfunctions caused by the use of products not officially provided by Growatt.
- Do not disassemble the product in anyway or pierce the product with sharp objects.
- Make sure the machine is turned off before installing or unplugging any modules of the machine, otherwise the power interface may be damaged.
- Avoid exposing the product to water. Do not immerse the product in water or get it wet. Do not use the product in rain or humid environment, otherwise the battery may catch fire or explode.
- If you accidentally drop the product into water while using it, please stay away from the product and keep it in a safe open area until the product is completely dry. The dried product should not be reused again and should be disposed of properly according to the disposal guide in this manual.
- Do not use the product in an environment of strong static electricity or magnetic field. Otherwise, it may cause the product to malfunction or serious damage.
- Do not place this product in a microwave or pressure cooker.
- The operating environment temperature of this product is from -10°C to 40°C. Using this product in a high temperature environment may result in a fire or explosion. Conversely, using the product at ultra-low temperature will seriously degrade the product performance and may cause the product to stop working.
- Do not use any batteries or appliances which have been damaged or modified. Damaged or modified batteries may exhibit unpredictable dangers resulting in fire, explosion or risk of injury.
- If the product catches fire, it is recommended to use fire extinguishing equipment according to the following priorities: sand, fire blanket, dry powder, carbon dioxide fire extinguisher.
- You may use a dry cloth to clean off the dirt on the product.

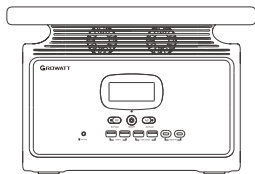
Storage and Transportation

- Keep the product out of the reach of children and pets. If your child accidentally swallows product parts, seek for medical help right away.
- For long-term storage, keep the battery level between 30%-80% and store it in a temperature indoors. If the battery of the product is in a low-power state for a long time, the battery will enter a deep sleep mode, and the battery may even be damaged in a serious low-power state. To wake the battery from deep sleep, please recharge the portable power station.
- Do not place the product near a heat source, such as in a fire or a heating furnace. The product should be stored in a dry environment. Do not place the machine in water or where it may leak.
- Do not leave the product in a car exposed directly to the sun or at a high temperature.
- During transportation, please make sure that the power of the product is less than 30%.
Do not store or transport this product with eyeglasses, watches, metal necklaces, hairpins, or other metal objects.

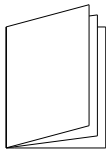
Disposal Guide

- Be sure to completely discharge the machine battery before placing the machine battery in the proper disposal location per local rules and regulations. Batteries are hazardous chemicals and should not be disposed of in ordinary trash cans.
Follow local laws and regulations for battery recycling and disposal.
- Please dispose of over-discharged batteries that cannot be recharged.

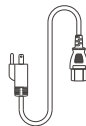
Package Contents



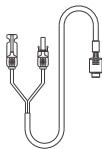
INFINITY 1300 Portable Power Station



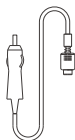
User Manual and Warranty Card



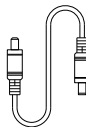
1.5m AC Charging Cable



MC4 to XT60 Solar Panel Charging Cable

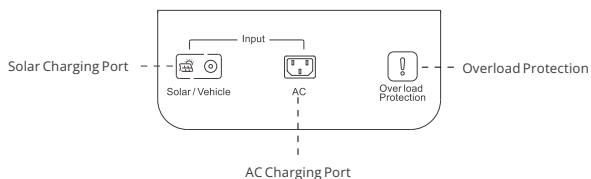
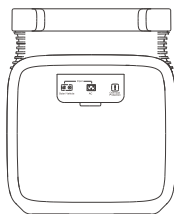
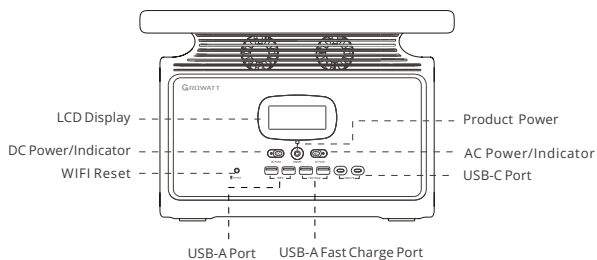
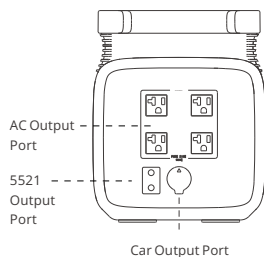


1.5m Car Charging Cable

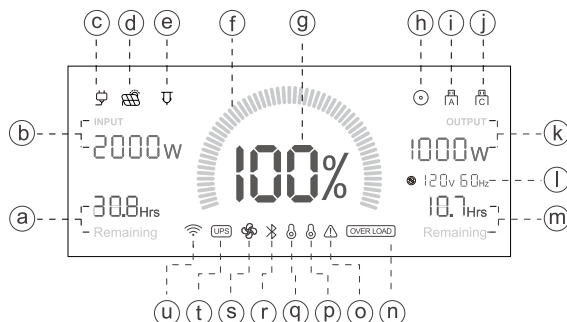


5521 Output Cable

Getting to Know the INFINITY 1300



LED Display



	Indicators	Description
a	Remaining Charge Time	The remaining charge time calculated by the system based on the current power consumption, accurate to 0.1 hour.
b	Input Power	The total input power of wall charge, solar charge, and car charge.
c	AC Input Indicator	INFINITY 1300 is being charged using the wall charger.
d	PV Input Indicator	INFINITY 1300 is being charged using the solar panels.
e	Car Input Indicator	INFINITY 1300 is being charged using the car charger.
f&g	Remaining Battery Percentage	Display the current remaining battery percentage in real time.
h	Car Output Indicator	INFINITY 1300 is supplying power to external devices via the car output port.
i	USB-A Output Indicator	INFINITY 1300 is supplying power to external devices via USB-A port(s).
j	USB-C Output Indicator	INFINITY 1300 is supplying power to external devices via USB-C port(s).
k	Output Power	The total output power of DC, AC, and wireless charging.
l	Output Voltage and Frequency	Display the current AC output voltage and frequency.
m	Remaining Discharge Time	The remaining discharge time calculated by the system based on the current power consumption, accurate to 0.1 hour.
n	Overload Warning	The current total output power is higher than 1800W, the AC output will be stopped for battery protection.
o	System Alert	The product is not working properly. Check the error codes in the appendix to understand the cause of the error and find the solution.
p	High Temperature Warning	The temperature of INFINITY 1300 is too high. Please place the product in an open area for cooling.
q	Low Temperature Warning	The current battery temperature is low, and the charging efficiency will be reduced. Keep using the product, and the charging efficiency will return to normal as the temperature rises.
r	Bluetooth Indicator	The product is connected to Bluetooth and can be controlled remotely through the MyGro APP.
s	Fan Status Indicator	The fan is running to cool the product.
t	UPS Indicator	The product has turn on UPS mode to provide uninterrupted power to your devices.
u	Wi-Fi Indicator	The product is connected to Wi-Fi and can be controlled remotely through the MyGro APP.

How to Use

Before use, please put INFINITY 1300 on a clean and flat ground to ensure that the machine will not be in contact with liquid or tilted, and check whether there are foreign objects on the body.

Product ON/OFF

- A) To turn on the INFINITY 1300, long press the power button until the screen lights up.
- B) To turn off the INFINITY 1300, press and hold the power button until you hear a beep and observe the OFF prompts on the screen.

DC Power ON/OFF

- C) Short press the DC power button to turn on the DC output supply (including all USB ports and car output port). You should hear a beep sound and observe that the DC power indicator lights up.
- D) To turn off the DC output power, short press the DC power button. You should observe that the DC power indicator turns off. When the output power of a single DC port exceeds the rated power below, the system will trigger an overload alarm and cut off the DC output.
The maximum output power of a USB-A port is 12W.
The maximum output power of a Fast Charge USB-A port is 18W.
The maximum output power of a USB-C port is 100W.

AC Power ON/OFF

- E) To turn on the AC output supply, short press the AC power button, and you will observe the AC power indicator lights up, and the AC output port can be used. Short press the AC output button again, you will observe the AC power indicator lights off and the AC output will be turned off.
- F) Long press the AC power button for 6 seconds to change AC frequency mode (50Hz/60Hz).
The total output power of the AC output ports is up to 1800W (across all ports). When the total output power exceeds the rated power, the product will trigger overload protection, cut off the AC output and prompt an overload alarm. Unplugging the AC load will clear the alarm and restore normal AC output.

Wireless Charging

- G) Wireless charging is activated when the DC power is turned on. You can charge wirelessly by placing the device within the wireless charging range on top of the product.
This feature is only available for devices that support wireless charging. You can check the wireless charging status by looking at the LED indicators on the wireless charging panel.

Slow breathing blue: your device is being charged wirelessly.

Flashing sky blue: an error occurred during wireless charging.

Steady green: wireless charging is ready, but no devices are detected.

Use After Long-Term Storage

If your portable power station has not been used for more than 3 months, it is recommended to discharge the battery to 0% and then charge it to 100% to avoid calibration errors after a long time of inactivity.

How to Recharge

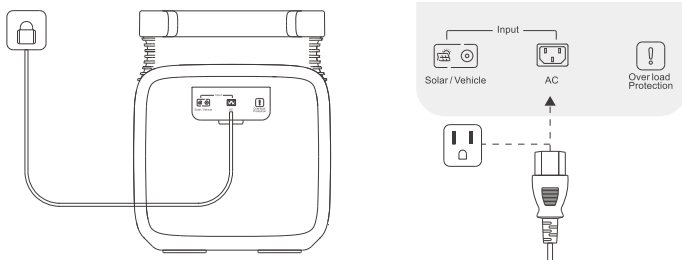
Notice Before Charging

- This product supports wall charging, solar panel charging, and car charging.
- This product supports charging and discharging at the same time.
- Do not use a charging cable not officially designated by Growatt for charging. Otherwise, Growatt will not be responsible for any consequences.
- When charging, please make sure to place the machine away from liquids, flammables, and combustibles.
- If the product is charged immediately after full-load discharge, over-temperature protection may be triggered for battery safety reasons. It typically takes 0-2 hour.
- The products recharging temperature range is 0~40°C(32~104°F). Charging within the ideal charging ambient temperature 50°F~82°F(10°C-28°C) can greatly extend the battery life.

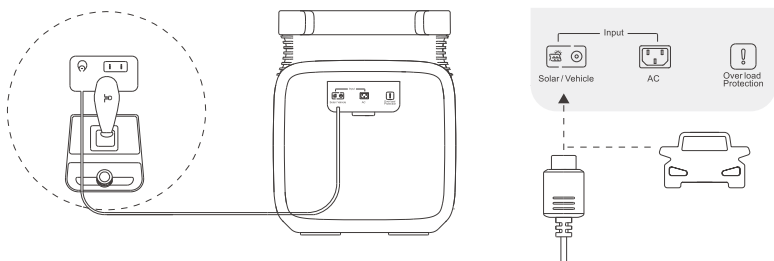
I) AC Charging and Car Charging

The AC charging ports for the INFINITY 1300 are located on the right side of the product. Please follow the instructions below to connect and recharge the product.

a) AC Charging



b) Car Charging



II) PV Charging

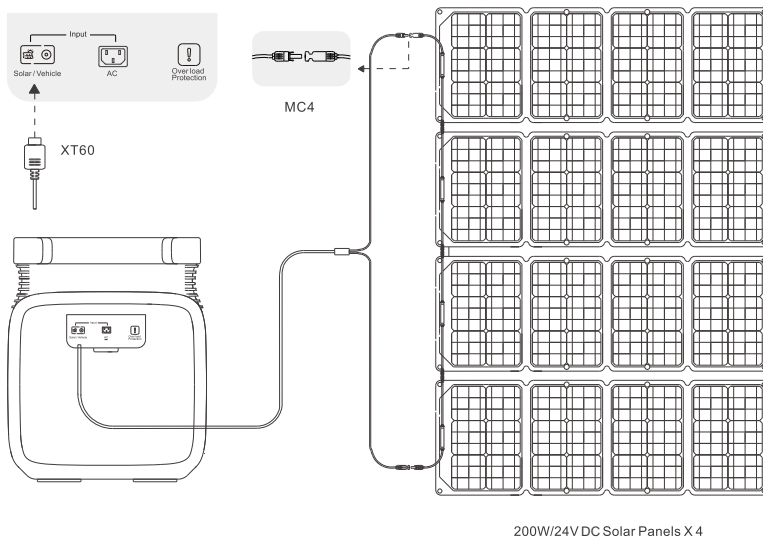
The series and parallel connection methods of solar panel to ensure that you are connecting the solar panels correctly for charging. If the product is damaged due to incorrect connection not in accordance with the instructions, Growatt will not be responsible for the free maintenance of the machine within the warranty period. The solar charging ports for the INFINITY 1300 are located on the left side of the product. The INFINITY 1300 DC input range is 12V-100V. You must ensure that the input voltage is within the specified range. When the input voltage exceeds 100V, the excessive voltage may cause damage to the product and the INFINITY 1300 will trigger over voltage protection.

- This product supports AC and solar panel charging at the same time. The solar charging method is preferred, and the AC charging method is used to supplement when the PV input power is insufficient.

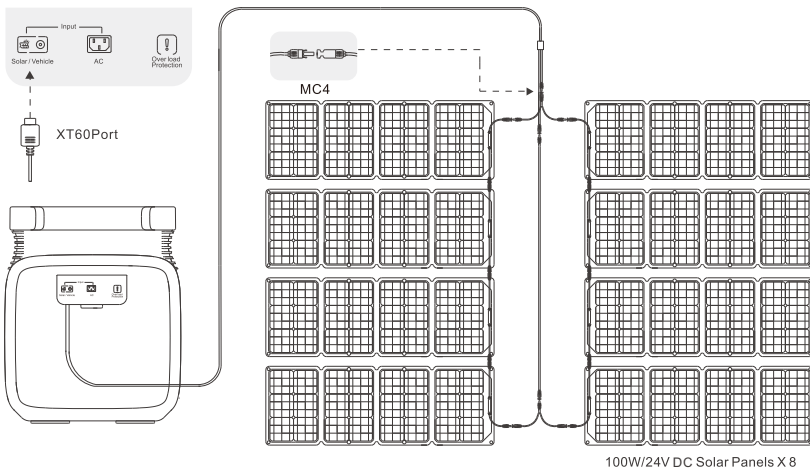
a) Connect with Growatt Solar Panels

You can charge the INFINITY 1300 by connecting up to two 24V solar panels in series or using one 12V solar panels(two sets in parallel with each set of four panels in series). Connect the MC4 connector on the solar panel to the MC4-XT60 adapter cable, and supply power to the INFINITY 1300 through the XT60 port on the side of the INFINITY 1300. When you need to connect two solar panels, it is recommended to connect the two solar panels in parallel, and then use the MC4-XT60 adapter cable to connect to the INFINITY 1300 for charging.

Connecting to Four 24V/200W Solar Panels in Series



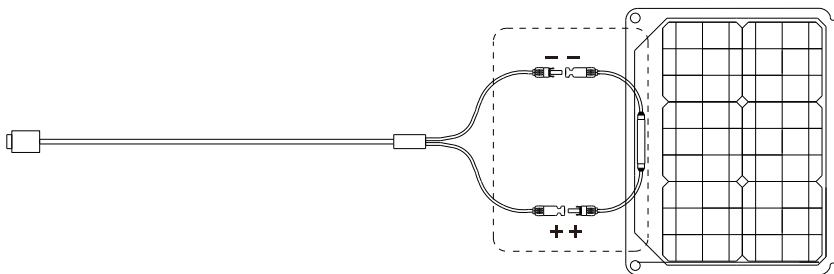
Connecting to Eight 24V/100W Solar Panels(Two Sets in Parallel with Each Set of Four Panels in Series)



b) Connect with Other Branded Solar Panels

Users can purchase other brands of solar panels (supporting MC4 Connector) to power the INFINITY 1300 through their own channels. As long as the voltage and current are within the DC input range of INFINITY 1300 (12V-100V/12A Max), users can charge INFINITY 1300 through the MC4 to XT60 adapter cable.

Please follow the figure below to connect the positive and negative poles. Incorrect connection may result in damage to the product. During the warranty period of product is damaged due to quality problems of the third-party solar panels or improper operation, Growatt is not responsible for free maintenance during the warranty period.



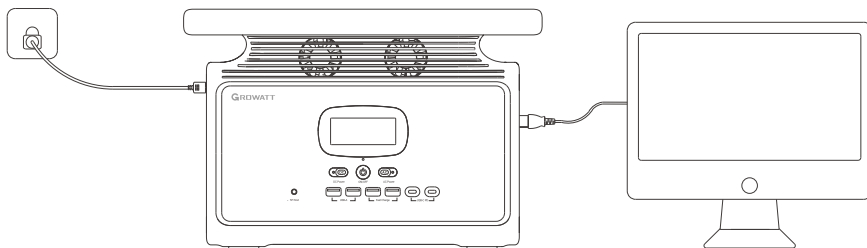
Instructions for Advanced Features

I) UPS(Uninterruptible Power Supply)

The INFINITY 1300 supports UPS (Uninterruptible Power Supply) function. In UPS mode, the AC power comes from the grid, not the battery. When the power grid is cut off, INFINITY 1300 will automatically switch to battery power supply mode within 20ms, providing high stability power supply for your load.

a) UPS Use Guide

When using wall charging as the input method, turning on the AC output and plugging in devices on AC ports will automatically activate the UPS mode. Please connect the device according to the figure below to enable the UPS function.



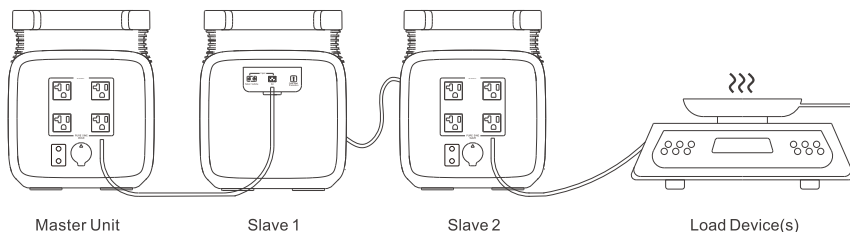
b)Precautions before Using the UPS Feature

- This function is a non-professional UPS function and does not support 0ms switching. Please do not connect it to equipment that is highly sensitive to uninterrupted power supply, or perform multiple tests before use.
- UPS only supports the use of electrical appliances below 1800W, and do not use other devices at the same time during use to avoid overload protection.
- UPS function is only supported when one INFINITY 1300 is running independently, and it is not available when multiple INFINITY 1300 work in series.
- Growatt is not responsible for equipment failure or loss of data if the instructions are not followed.

II)Multi-unit Expansion in Series

You can use AC adapters to connect up to three INFINITY 1300 in series to get a larger battery capacity. When you use this expansion method, you will need to define one of the units as the master and the rest as slaves. You need to connect the AC output port of the Master Unit to the AC input port of Slave 1, then connect the AC output port of Slave 1 to the AC input port of Slave 2, then plug the load device into the AC output port of Slave 2(as shown in the figure below), and finally turn on the AC output power of all INFINITY 1300 to enable battery expansion.

When using this expansion method, make sure that each units are fully charged, otherwise an overload protection will be triggered. After use, it is recommended to charge each unit separately to avoid excessive burden on the home grid.



How to Connect to APP

I)Pairing the Product with Your Device

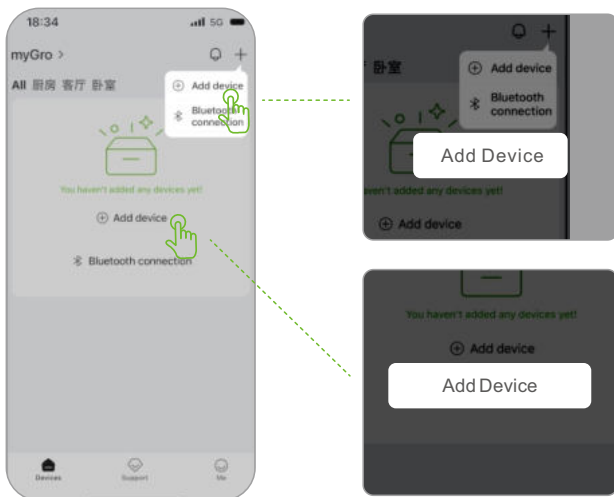
When the product is connected to the APP for the first time, you need to use Bluetooth pairing for network configuration. Please get as close as possible to the product and make sure the phone is within the Bluetooth coverage of the device.

1.Download "MyGro" APP from App Store or Google Play.Or you may download it from the official website
(For first-time users, you need to follow the instruction and complete account registration on the APP).

2.You may choose either of the following ways to connect your portable power station:

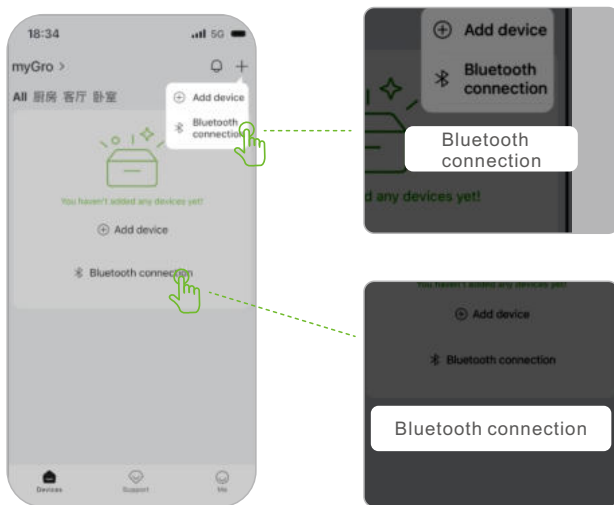
Remote Wi-Fi Connection

- Go to the **Device** page and click **Add Device**. Or select the "+" button at the top right of the page, then select **Add Device**.
- Short press the **Wi-Fi Reset** button to send Bluetooth & Wi-Fi signals and connect with your mobile devices.
- Follow the instruction on the APP and finish the rest of the setup.



Local Bluetooth Control

- Go to the **Device** page and click **Pair via Bluetooth**. Or select the "+" button at the top right of the page, then select **Pair via Bluetooth**.
- Short press the **Wi-Fi Reset** button to send Bluetooth & Wi-Fi signals and connect with your mobile devices.
- Follow the instruction on the APP and finish the rest of the setup.



- Once you complete the connection setup, you may remotely control your portable power station through local connection (Bluetooth) or remote connection (Wi-Fi).

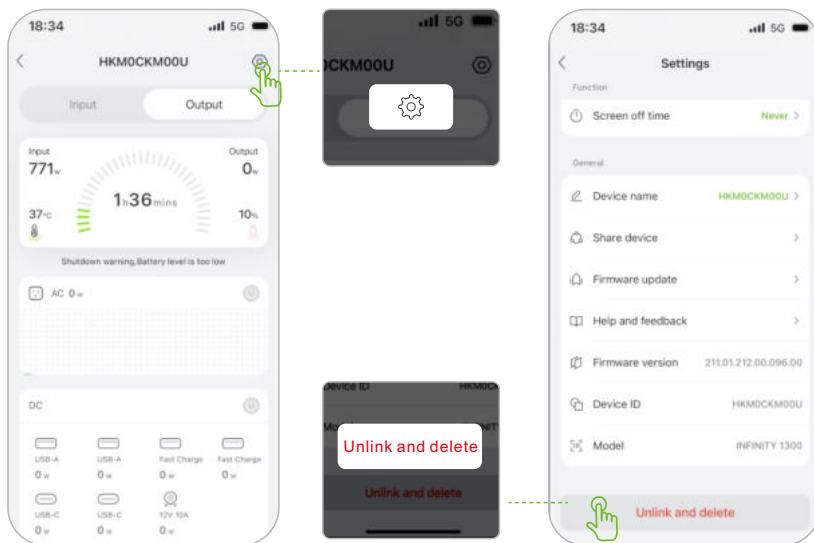
II) Re-pairing the Product with New Mobile Devices

If the device is already bound to a mobile device, you need to un-pair the product from the current device before re-pairing it to the new mobile device. After re-pairing, you can use the new mobile device to remotely control the product.

- Un-pair from the existing device.

Method 1: Un-pair using APP

- Go to **Device** select the product from the device list to enter the product details, and then click ⚙️ to enter the setting page.
- Click Remove Device and confirm.



- Method 2: Reset Bluetooth/Wi-Fi to un-pair

- Press and hold the Wi-Fi Reset button on the device for 3 seconds until you hear a beep. The device pairing record is cleared successfully.

After successfully un-pairing the device, please login to the APP on the new mobile device to pair the device.
(Please refer to the steps in **I. Pairing the Product with Your Device**).

III) Using Multiple Mobile Devices to Control the Product

If multiple users need to remotely control the product, the master account needs to authorize other MyGro accounts to allow other mobile devices to control the product.

1.Go to Device, select the product from the device list to enter the product details, and then click the  to enter the setting page.

2.Select Share device, enter the account ID of the device to be shared, and send a pairing invitation.

3.After the invited account accepts the invitation, the device is shared successfully.

* If the master account unpairs from the device, the associated shared account will be un-paired simultaneously and the device cannot be controlled remotely.

Technical Specification

General

Model	Infinity 1300
Capacity	1382Wh, 27Ah
Dimensions	16.5x9.1x11.3in (418.7x230x287mm)
Net Weight	42.33lbs(19.2kg)

Input Ports

AC Input	100-120V~,60Hz, 1200W Max.
Solar Charge	12-100Vd.c. 800W Max.
Vehicle Charge	12-24Vd.c. 8A Max

Output Ports

AC Output (x4)	120V~,60Hz,1800W MAX.(surge 3600W)
Car Outlet (x1)	13.2Vd.c./10A, 132W Max.
USB-A (x2)	5Vd.c./2.4A, 12W Max.
USB A-Fast Charge (x2)	5Vd.c./2.4A,9Vd.c./2A,12Vd.c./1.5A 18W Max.
Type-C (x2)	5Vd.c./9Vd.c./12Vd.c./15Vd.c./20Vd.c. 5A, 100W Max.
Wireless Charging	5/7.5/10/15W
DC 5521	13.2Vd.c. 3A Max

Battery Information

Battery Type	LFP
Lifecycle	>3000 Cycles
Charging Temperature	0~40°C (32~104°F)
Discharging Temperature	-10~40°C (14~104°F)

FAQ

Can I take INFINITY 1300 on a plane?

No, you can't. This product is a lithium battery product. According to international air transport regulations, lithium battery products exceeding 100Wh cannot be carried on the plane.

Why does the INFINITY 1300 not work properly when the total output power of the device is within the rated power of the INFINITY 1300?

First, please check whether the charge of the product is too low and charge it sufficiently prior to use. Secondly, check if the surge power usage of the equipment exceeds the instantaneous peak power of the INFINITY 1300. If so, you should use Growatt higher power products.

Why does the INFINITY 1300 make noise when in use?

The product contains air cooling system, and the built-in fan helps the product to dissipate heat. A slight noise when the product is in use is normal.

Will INFINITY 1300 automatically shut down?

INFINITY 1300 supports power saving function. By default, the LCD display will turn off after 5 minutes of inactivity, and will automatically shut down after another 1 hour of inactivity. You can change the automatic screen-off and automatic shutdown time via MyGro APP.

How to clean INFINITY 1300?

If the INFINITY 1300 needs to be cleaned, please wipe it with a dry, non-abrasive cloth or use a special cleaner for LCD screens to achieve better cleaning results. Do not let water enter the inside of the product, which may cause damage to the circuit or parts!

Error Codes

Indicators	Problem	Description
 A00	System Alert	Restart the portable power station. If the problem persists after several attempts, please contact Growatt Customer Service for repair.
  A01	Fan Blockage	Please check if the fan is blocked. If there is a blockage, please turn off the machine and remove the blockage, then restart the product to return to normal. If the problem persists, please contact Growatt Customer Service for repair.
  A02	High Temperature Warning	Turn off the product and place it in an open area for 0-2 hours. After cooling, the product will continue to work normally.
  A03	Inverter Overload	The AC output is overloaded. Unplug the load(s) on the AC output port(s) and keep the total AC output power within 1800W to resume normal operation. Overloading for a long time may cause damage to the product.
 A04	Low Battery Voltage	The battery voltage is too low. Please recharge the battery in time.
 A05	PV Over Voltage	PV input voltage is too high. Please check the status of the solar panel. If the output voltage of the solar panel is normal, please contact Growatt Customer Service for repair.
 A06	USB Output Overload	Please check the output power of your USB devices. Remove your USB device(s) if the output exceeds the maximum output of the USB port(s).
  A07	Product Overload	The INFINITY 1300 is overloaded. Unplug part or all of the loads and keep the total output within 2200W to resume normal operation.
  A08	PV Board Over Temperature	Disconnect the solar panels from the portable power station to resume normal operation.
  A09	Discharge Over Temperature	Turn off the product and place it in an open area for 0-2 hours. After cooling, the product will continue to work normally.
  A10	High Battery Temperature	Turn off the product and place it in an open area for 0-2 hours. After cooling, the product will continue to work normally.
  A11	Low Battery Temperature	Continue using the portable power station, the temperature will rise and the product will resume normal status. If the error persists, contact Growatt Customer Service for repair.
 A12	Car Charging Overcurrent	Please check whether the input meets the specification of car charging. Remove the car charger to resume normal operation.
F00	System Failure	Restart the portable power station. If the problem persists after several attempts, please contact Growatt Customer Service for repair.
F01	Output Short Circuit	Please check if there is a problem with the output loads. Remove the loads to resume normal operation. If the problem persists, please contact Growatt Customer Service for repair.
 F02	Product Over Temperature	Turn off the product and place it in an open area for 0-2 hours. After cooling, the product will continue to work normally.
  F03	Inverter Overload	Please make sure the total output power is within the acceptable range. Remove the excess loads to resume normal operation. If the problem persists, contact Growatt Customer Service for repair.

Troubleshooting

Indicators	Troubleshooting	Description
Unable to recharge INFINITY 1300	Check if the charging cable is plugged in properly.	Double check that the interface of the charging cable is in good contact.
	Please check whether the overload protection button (next to the input ports) is in the pop-up state.	Check overload protection button.
	Didn't find any of the problems above.	Contact Growatt Customer Service for repair.
INFINITY 1300 is not powering my devices	Check if the load(s) are plugged in properly.	Please make sure the load(s) are in good connection with the output port(s).
	Please check the AC/DC power indicator supply and see if the output power is turned on.	Press the AC/DC power button to turn on AC/DC output. You should see the AC/DC indicator light up once the output power is turned on.
	Please check if the battery is too low.	Please recharge the INFINITY 1300 with the powering provided power cable.
	Please check if the device's startup power exceeds the surge peak of INFINITY 1300.	Please choose a model with a higher rated power.
	Didn't find any of the problems above.	Contact Growatt Customer Service for repair.

This device complies with Part 15 of the FCC Rules. Operation is subject to the following two conditions:

- (1) This device may not cause harmful interference, and
- (2) This device must accept any interference received, including interference that may cause undesired operation.

Warning: Changes or modifications not expressly approved by the party responsible for compliance could void the user's authority to operate the equipment.

NOTE: This equipment has been tested and found to comply with the limits for a Class B digital device, pursuant to part 15 of the FCC Rules. These limits are designed to provide reasonable protection against harmful interference in a residential installation. This equipment generates, uses and can radiate radio frequency energy and, if not installed and used in accordance with the instructions, may cause harmful interference to radio communications. However, there is no guarantee that interference will not occur in a particular installation.

FCC Radiation Exposure Statement:

This equipment complies with FCC radiation exposure limits set forth for an uncontrolled environment. In order to avoid the possibility of exceeding the FCC radio frequency exposure limits, Human proximity to the antenna shall not be less than 20cm (8 inches) during normal operation.

Industry Canada Notice:

This device contains licence-exempt transmitter(s)/receiver(s) that comply with Innovation, Science and Economic Development Canada's licence-exempt RSS(s). Operation is subject to the following two conditions:

- (1) This device may not cause interference.
- (2) This device must accept any interference, including interference that may cause undesired operation of the device.

Warning: Changes or modifications not expressly approved by the party responsible for compliance could void the user's authority to operate the equipment.

ISED RF Exposure statement:

This equipment complies with ISED radiation exposure limits set forth for an uncontrolled environment. In order to avoid the possibility of exceeding the ISED radio frequency exposure limits, Human proximity to the antenna shall not be less than 20cm (7.9 inches) during normal operation.

