

fingers[®]



Quick Start Guide

Octane-WM65
5.1 Channel Sound Bar



I. Important - Warnings and Safety

1. Do not place the speaker near heat sources such as fire, radiators, stoves and other apparatus that produce heat.
2. Use only accessories supplied by FINGERS.
3. Unplug the power cord of the speaker when unused for long periods or during lightning/thunderstorms.
4. Do place the speakers on a stable surface and keep them out of reach from children.
5. To avoid any shock hazards, we recommend not removing the cover, dismantle the unit or even insert any object in the unit.
6. It is recommended to refer all servicing to qualified personnel only. Servicing is required when the speaker has been damaged in any way. Any evidence of any attempt to open and/or alter the device, including any scratch, peeling, puncturing, or removal of any of the labels, will void the Limited Warranty.

II. In the box

1 x FINGERS Octane-WM65

(Sound Bar)

1 x Remote Control

1 x AUX Cable

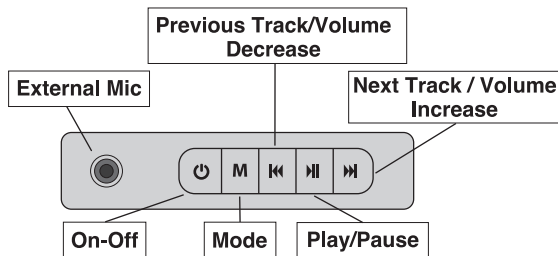
2 x Wall-mounting Brackets

1 x Screw Set

1 x Quick Start Guide

1 x Brand Note

III. On-board Controls



Function	Operations
1. Power On-Off	Long press to switch On-Off the speaker
2. Mode	Short press to navigate among the modes of BT USB HDMI(ARC) Optical AUX Coaxial Mode
3. Play/Pause	Short Press to Play/Pause
4. Next Track	Short Press to move on to Next track in BT/USB/HDMI ARC/Coaxial modes
	Long Press to increase the volume level (in all modes)
5. Previous Track	Short Press to move on to Previous Track in BT/USB/HDMI ARC modes/Coaxial modes
	Long Press to decrease the volume level (in all modes)

MIC Interface: External Mic interface can be used in this port.

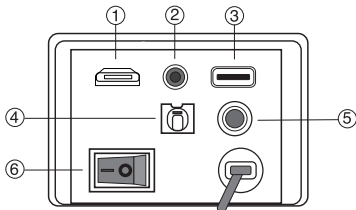
LED Display

Displays details of Mode inputs, Equalizer, Volume levels, Tracks and much more. When displayed as below -

1. BT: In BT mode
2. USB: In USB mode
3. AUX: Auxiliary input mode
4. OPT: Optical mode
5. ARC: HDMI (ARC) mode
6. COA: Coaxial mode

IV. Connection

1. HDMI ARC
2. AUX IN
3. USB Port
4. Optical IN
5. Coaxial
6. On-Off Power Switch



Note: To prevent malfunction and/or damage to speakers or other devices, we recommend always turning the volume down and switching OFF all the power devices, before making any connections.

V. Connect the Sound Bar

A. Power your system

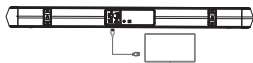


i. Plug the power cord of Sound Bar Socket

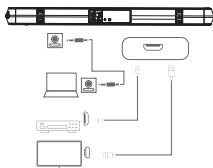


ii. Insert AAA Batteries into the remote

B. Connect to TV



C. Connect to other devices



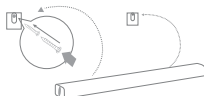
D. Placement of Sound Bar

Place the Sound Bar on the table/flat space.

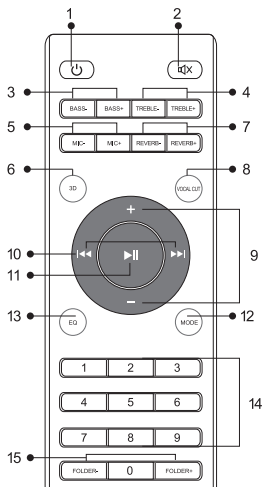


E. Wall Mounting

Fix the screws on the wall with Wall-mounting brackets and screw set provided.
Hook the Sound Bar on the wall.



VI. Remote Control



1. Power/Stand-by: To switch between stand-by and operational mode.
2. Mute: To mute the sound.
3. BASS-/BASS+: To adjust the bass level.
4. Treble+/Treble-: To adjust the Treble level.
5. MIC-/MIC+: To adjust Mic Volume.
6. 3D : To add 3D effect.
7. Reverb+/Reverb- : Adjust the reverb function for MIC.
8. Vocal Cut: Eliminate original singing.
9. Volume (+/-): To adjust the music volume.
10. Preview/Next: To select Previous/Next track in BT /USB HDMI ARC mode.
11. Play/Pause: To Play/Pause current track.
12. Mode: To navigate among various playback modes of Bluetooth, USB, AUX, Optical, Coaxial and HDMI(ARC).
13. EQ: To select different equalizers - Music (EQ1), Movie (EQ2) and News (EQ3).
- 14 0 To 9 Channels: When USB and Micro SD card mode, you choose the song quickly.
For example: if you need to choose the 258th song, you can press “2” “5” “8 and wait for 1 second, it will turn to the 258th song and play automatically. If there are no songs you chose, it will continue to play the current song.
15. Folder-/Folder+ : To select the particular folder of your choice track songs.

VII. Modes

You can enjoy your music in the following ways

i.BT ii.USB iii.Optical iv.HDMI(ARC) v.AUX vi. Coaxial

i. BT

- Press on the mode button till the voice prompt of the word “BT mode” is heard.
- The LED screen highlights “BT” signifying that it is ready to pair a device.
- Make sure that Bluetooth is enabled on your device.
- Find the device list and select FINGERS Octane-WM65
- A sound prompt of “connected” is heard and it is ready to play.



ii. USB

- Insert the USB device (Pen Drive) in the provided port
- Press the mode button till the voice prompt of the word “USB mode” is heard.
- You can then play your favourite tracks directly from the USB port.

iii. AUX

- If you wish to listen to music from mobile devices, plug in the AUX cable in the AUX port.
- Press the mode button till the voice prompt of the word “AUX mode” is heard.
- You can then stream music directly from your mobile devices.

iv. Optical

- If you wish to listen to music from TV or other devices with Optical out, plug in the Optical cable in the Optical port.
- Press the mode button till the voice prompt of the word “Optical mode” is heard.
- You can then stream music directly from your devices.

v. HDMI (ARC)

- If you wish to listen to music from TV or other devices with HDMI ARC out, plug in the HDMI ARC compatible cable in the HDMI(ARC) port.
- Press the “Mode Symbol” button till the voice prompt of the word “HDMI mode” is heard.
- You can then stream music direct from your TV.

vi. Coaxial

- If you wish to listen to music from TV or other devices with Coaxial out, plug in the Coaxial cable in the Coaxial port. Press the mode button till the voice prompt of the word “Coaxial mode” is heard.
- You can then stream music directly from your devices.

VIII. Care and Maintenance

1. Switch off the speaker before cleaning it.
2. Use a soft, damp cloth to clean the surface.
3. Do not use any chemicals, solvents, or cleaning solutions containing alcohol, ammonia or abrasives.
4. Do not allow any liquid to enter into any of the openings.

IX. Product Specifications

Parameters	Octane-WM65
Wireless Protocol	Bluetooth v5.0
Total Output Power	65 W
Output Power	Sound Bar: 16.5W x 4 = 66W RMS
Driver Unit	Sound Bar: 4 x 2.25" (4 Ω)
Interfaces	AUX In, USB, Optical input, HDMI ARC, Coaxial, 6.35 mm Mic input
On-board Controls	Power On-Off Mode Volume Down/ Reverse Play/Pause Volume Up/Forward
Playback Options	Bluetooth USB AUX Optical HDMI ARC Coaxial
BT Frequency Range	2.402 GHz ~ 2.480 GHz
Effective Range	Up to 10 m
Dimensions	Sound Bar: 859 (L) x 90 (W) x 70 (H) mm
Weight	2.0 kg

Ver.: 1.0.0

Stay connected with us



@FingersIndia



@FingersIndia

Customer Service

- Support email: customer.care@fingers.co.in
- 022-4938 7600: Mon - Fri (9.30 am to 6.30 pm)

For further information, please visit www.fingers.co.in

*When connected via BT Mode - you can move around and play music within a wireless range of up to 10 m, with audio fidelity keeping stable and intact throughout.

• Images shown may vary from actual product.

• Specifications, features and appearance are subject to change without notice. • All logos, brands, trademarks and product names are properties of their respective owners. • Product warranty is governed by warranty terms mentioned on www.fingers.co.in • This product falls under e-waste (Management & Handling) Rules, 2011. For proper disposal method, visit our website www.fingers.co.in

