

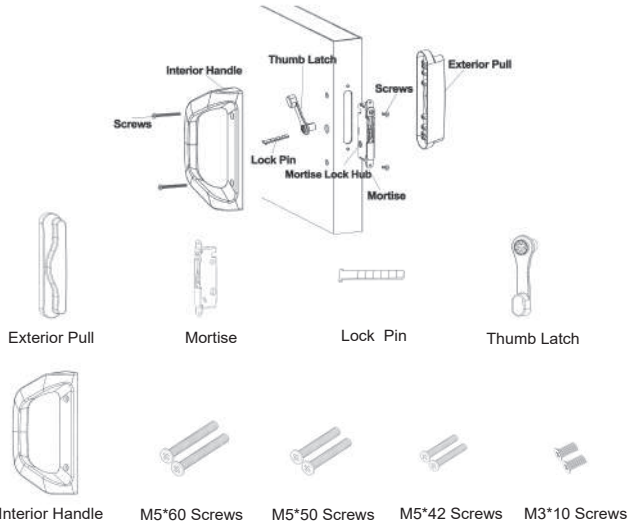
MODEL:A10

SLIDING PATIO DOOR HANDLE SET

**SLIDING PATIO DOOR HANDLE SET
INSTALLATION INSTRUCTIONS**

1.Preparation

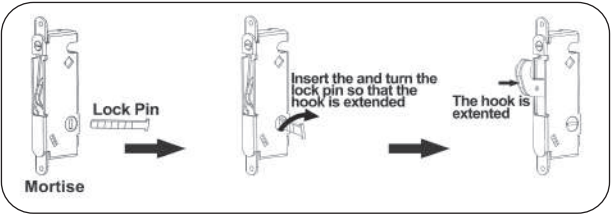
PREP1:Open the package and confirm that the following parts (below) are included. If not, please contact service@agradelock.com for a replacement.



NOTE:The lock is suitable for doors up to 2.2 inches in thickness. If you have a new door without a pre-drilled hole, please use the template (included in the package) to drill the new hole. You may also require an electric drill, a pencil, and a hammer.

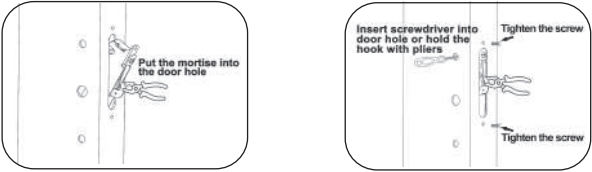
Installation

STEP1:Find and insert the lock pin into the mortise and turn the lock pin so that the hook extends.



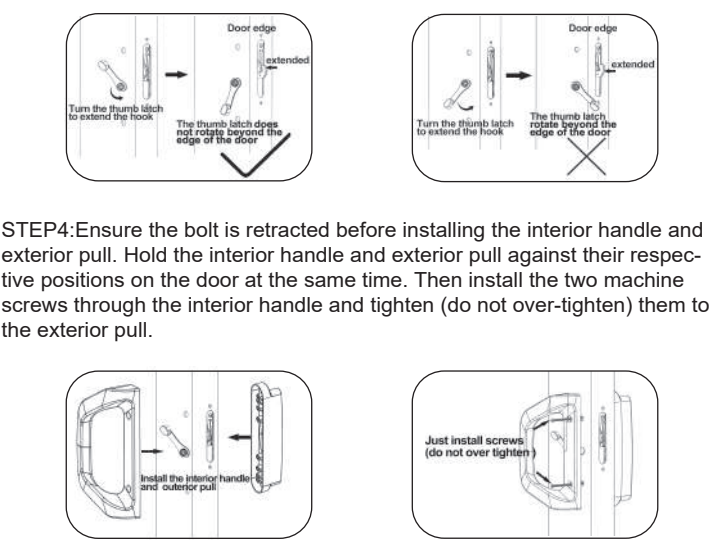
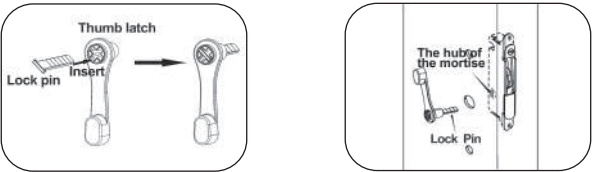
STEP2:Angle the mortise into correct position and hold it securely to prevent it from falling down the stile.

Note: to ensure the mortise does not fall, insert a screwdriver into the top handle mounting hole or hold the hook with pliers. Then tighten the screws to fix the mortise.

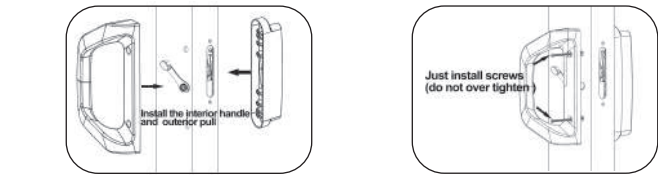


STEP3:First, ensure that the lock pin goes into the "X" slot in the hub of the thumb latch, then put it through the hub of the mortise lock as shown. Next, turn the thumb latch to test whether you can normally extend or retract the hook. Be sure to test the hook can extend or retract without issue by turning the thumb latch.

Note: After inserting the thumb latch with the lock pin into the hub of the mortise lock, the thumb latch can rotate freely (not beyond the edge of the door).



STEP4:Ensure the bolt is retracted before installing the interior handle and exterior pull. Hold the interior handle and exterior pull against their respective positions on the door at the same time. Then install the two machine screws through the interior handle and tighten (do not over-tighten) them to the exterior pull.



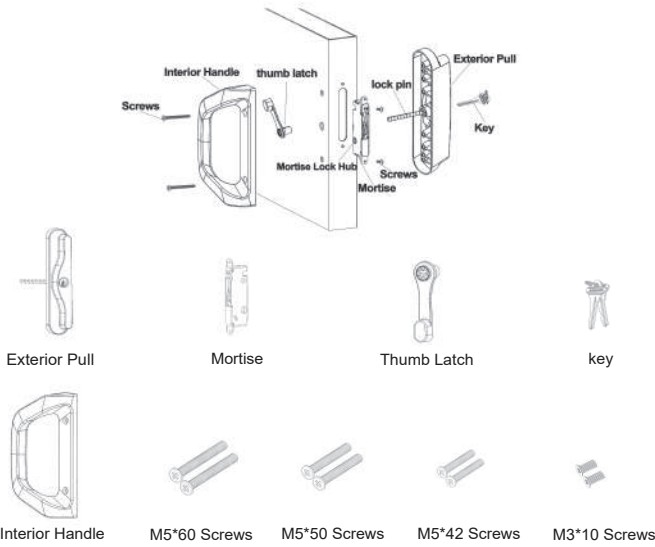
STEP5:Operate the lock with the thumb latch to be sure the lock functions properly. Then tighten the screws.If you cannot turn the thumb latch to lock or unlock the door, remove the handle from the door and repeat steps 3 through 4.



**SLIDING PATIO DOOR HANDLE SET(with Cylinder)
INSTALLATION INSTRUCTIONS**

1.Preparation

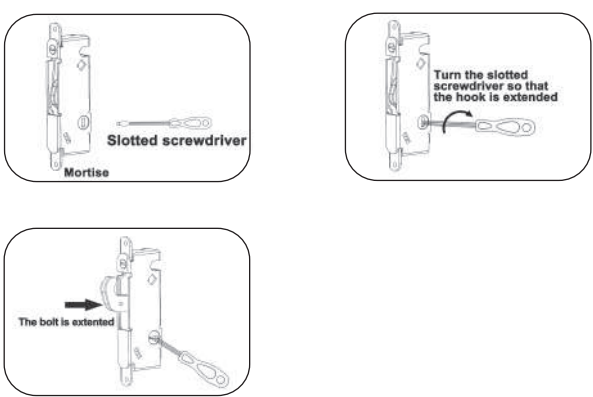
PREP1:Open the package and confirm that the following parts (below) are included. If not, please contact service@agradelock.com for a replacement.



NOTE:The lock is suitable for doors up to 2.2 inches in thickness. If you have a new door without a pre-drilled hole, please use the template (included in the package) to drill the new hole. You may also require an electric drill, a pencil, and a hammer.

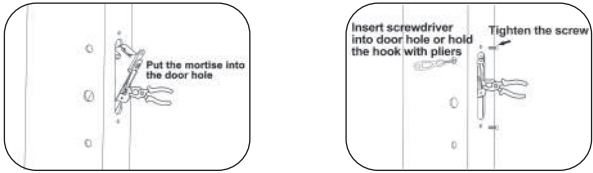
Installation

STEP1:Find and insert the lock pin into the mortise and turn the lock pin so that the hook extends.

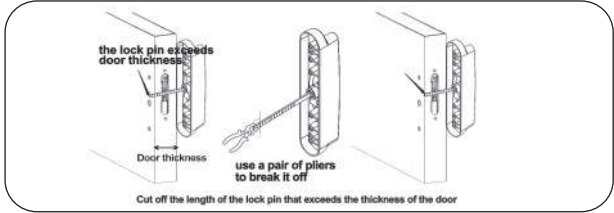


STEP2:Angle the mortise into correct position and hold it securely to prevent it from falling down the stile.

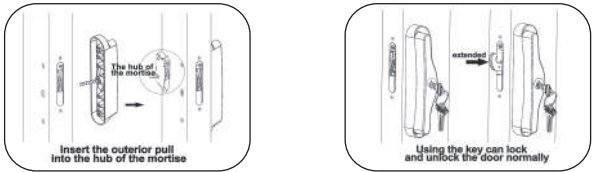
Note: to ensure the mortise does not fall, insert a screwdriver into the top handle mounting hole or hold the hook with pliers. Then tighten the screws to fix the mortise.



STEP3:Compare the length of the lock pin to the door's thickness and cut off the length of the lock pin that exceeds the thickness.

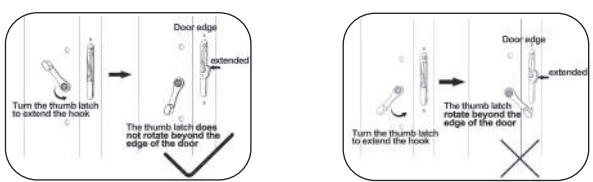
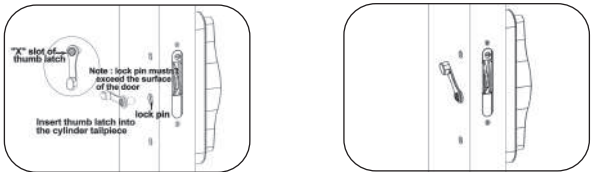


STEP4:Ensure the bolt is retracted before installing the exterior pull. When placing the exterior pull on the door, ensure that the lock pin of the exterior pull goes through the hub of the mortise, as shown. Then, test whether you can normally extend or retract the hook using the keys.

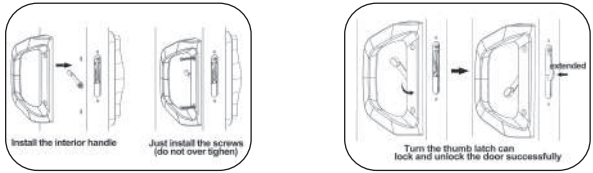


STEP5:Place the "X" slot of the thumb latch in the correct direction, then insert it into the lock pin of the exterior pull.

Note: After inserting the thumb latch into the lock pin of the exterior pull, the thumb latch can rotate freely (not beyond the edge of the door).



STEP6:Fix and install the interior handle on the door. Install (do not over-tighten) the two machine screws through the interior handle and tighten them to the exterior pull. Turn the thumb latch can lock and unlock the door successfully, then tighten the screws.



STEP7:Operate the lock with the thumb latch and the key to ensure the lock functions properly. If the lock does not work, remove the handle from the door and repeat steps 3 through 6.

Replacement Parts List & Troubleshooting For replacement parts & troubleshooting, write to:service@agradelock.com or call customer service at TEL:949-333-0722 8:00a.m-8:00p.m, EST, Monday-Friday. After sales service, please scan:



Limited Lifetime Warranty

The Manufacturer extends a Limited Lifetime Mechanical and finish Warranty to the original "User" of this Product against defects in materials and workmanship as long as the User occupies the residential premises upon which the Product was originally installed. Upon return of a defective Product to the Manufacturer, the Manufacturer shall either replace repair or refund the purchase price in exchange for the Product This warranty does not cover abused or misused Products or those Products used in commercial applications. No other warranties, express or implied are made with respect to the Product including but not limited to any implied warranty of merchantability or fitness for a particular purpose. The Manufacturer DOES NOT authorize any person to create for it any obligation or liability.

In connection with the Product, The Manufacturer maximum liability hereunder limited to the purchase price of the Product, and in no event shall the company be liable for any consequential, indirect, incidental, or special damages of any nature arising from the sale or use of this Product. whether in contract, tort, strict liability or otherwise. (For warranty service, please call 8: 00 a m.-8:00 p.m. EST, Monday through Friday).

Note: Should the Product be considered a consumer product it may be covered by the Magnusson Moss Federal Warranty Act, please be advised that :

(1)Some states do not allow limitations or incidental consequential damages on how long an implied warranty lasts so that the above limitations may not fully apply.

(2)This warranty gives specific legal rights and User may have other rights which may vary from state to state.

Manufacturer DOES NOT authorize any person to create for it any obligation or liability in connection with the Product, The Manufacturer maximum liability hereunder limited.