

### Foreword

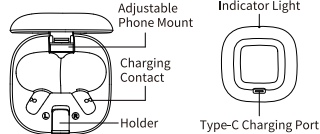
Thanks for purchasing Elshell product. Before using this product, please read this manual carefully. Please be sure to keep this manual for future reference. All the content has been carefully compiled by our company. Please forgive me for printing and omissions or errors.

### Precautions

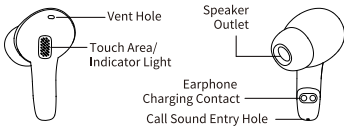
- 1) Do not use the machine in extremely hot, cold, dusty and humid environments.
- 2) Do not drop, hit, or violently vibrate during use.
- 3) Product performance and functions are subject to change without notice
- 4) The headset contains batteries and should not be exposed to sunlight, fire or similar excessive heat.
- 5) Do not disassemble the machine without authorization to avoid danger.

### Schematic

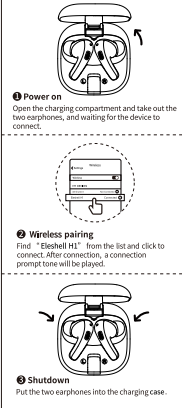
#### Charging Compartment



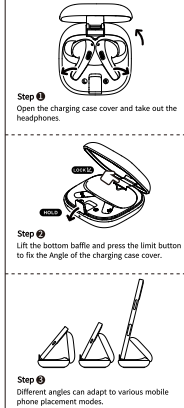
#### Headphones



### Product connection steps



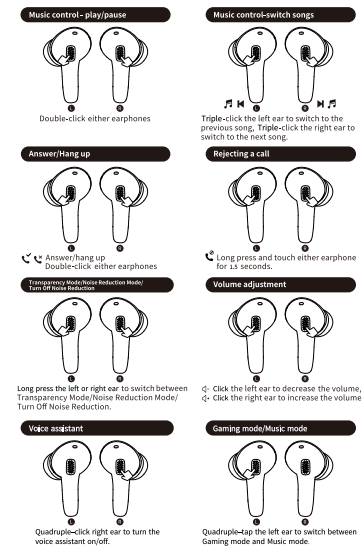
### Steps to become phone holder



### Packing list



### Quick start guide



### Instructions for use

1. Power on: Open the charging compartment and take out the two earphones, and the earphones will automatically power on.
2. Shutdown: Put the two earphones into the charging case.
3. Answer/Hang up: When a call comes in or during a call, double-click and touch either earphones to answer or hang up the call.
4. Reject the call: Press and hold the earphone for 1.5 seconds when there is an incoming call.
5. Play/Pause: Double-click and touch either earphones.
6. Switch songs: Triple-click the left ear to switch to the previous song. Triple-click the right ear to switch to the next song.
7. Transparency Mode/Noise Reduction Mode/Turn Off Noise Reduction: Long press the left or right ear to switch between Transparency Mode/Noise Reduction Mode/Turn Off Noise Reduction.
8. Adjust the volume: Click the left ear to decrease the volume, click the right ear to increase the volume.
9. Voice assistant: Quadruple-click right ear to turn the voice assistant on/off.
10. Gaming mode/Music mode: Quadruple-click the left ear to switch between Gaming mode and Music mode.

### Charging instructions

1. When the amount of the charging compartment is insufficient, please charge it in time. When charging, the charging compartment indicator light flashes; when fully charged, the indicator light stays on.
2. Connect one end of the USB charging cable to the Type-C charging interface of the headset, and connect to the USB port of the power adapter.
3. When the power of the left and right earphones is low, a low battery warning tone will be reported. Please put the headset into the charging compartment and close the cover to charge.
4. This product is not sold without adapters. Consumers should buy the power adapter that obtains CCC certification and meets the standard requirements.
5. When there are foreign objects on the earphone charging interface and the contact is poor, please use a cotton swab dipped in alcohol to gently wipe and clean the earphone charging interface.

### Product parameters

Product Name: True Wireless Stereo  
Wireless Version: V6.0  
Earphone Battery Capacity: 60 mAh  
Charging Compartment Battery Capacity: 350 mAh  
Charging Compartment Rated Input: 5V=350 mA  
Support AAC, SBC audio decoding  
Support AZDP / AVRCP / HFP / SPP

### FCC Caution

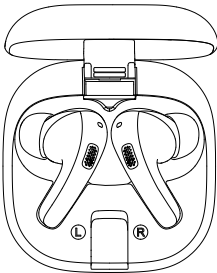
This device complies with part 15 of the FCC Rules. Operation is subject to the following two conditions:  
(1) This device may not cause harmful interference, and (2) this device must accept any interference received, including interference that may cause undesired operation.  
Any changes or modifications not expressly approved by the party responsible for compliance could void the user's authority to operate the equipment.  
NOTE: This equipment has been tested and found to comply with the limits for a Class B digital device, pursuant to Part 15 of the FCC Rules.  
These limits are designed to provide reasonable protection against harmful interference in a residential installation.  
This equipment generates, uses and can radiate radio frequency energy and, if not installed and used in accordance with the instructions, may cause harmful interference to radio communications.  
However, there is no guarantee that interference will not occur in a particular installation. If this equipment does cause harmful interference to radio or television reception, which can be determined by turning the equipment off and on, the user is encouraged to try to correct the interference by one or more of the following measures:  
--- Reorient or relocate the receiving antenna.  
--- Increase the separation between the equipment and receiver.  
--- Connect the equipment into an outlet on a circuit different from that to which the receiver is connected.  
--- Consult the dealer or an experienced radio/TV technician for help.  
The device has been evaluated to meet general RF exposure requirements.  
The device can be used in portable exposure condition without restriction.

According to the company's business development, the product's functional parameters and picture content may be adjusted at any time. Elshell cannot guarantee that the relevant packaging and manuals will be updated in a timely manner. Customers are subject to the actual use of the functions and content.

# Elshell

## H1

True Wireless Stereo



### Quick Start Guide