

**GYE24 Series
Wall Mounted Bottle Filler
With Angled Bi-level Drinking Fountains**



GYE24-L-SLPT



GYE24-L

IMPORTANT: INSTALLATION AND SITE PREP FOR FREEZE RESISTANT OPTIONS “-FRU, -NP” WILL DIFFER FROM STANDARD! REFER TO DESIGNATED FREEZE RESISTANT INSTALLATION DETAILS PRIOR TO ROUGH-IN AND FIXTURE INSTALL FOR -FRU AND -NP SERIES OPTIONS. FOR ADDITIONAL INFORMATION VISIT: www.MurdockMfg.com/Resources OR CONTACT YOUR LOCAL SALES REPRESENTATIVE.

NOTES TO INSTALLER:

1. Please leave this documentation with the owner of the fixture when finished.
2. Please read this entire booklet before beginning the installation.
3. Check your installation for compliance with plumbing, electrical and other applicable codes.

**TECHNICAL ASSISTANCE TOLL FREE TELEPHONE NUMBER:
1.800.591.9360**

Technical Assistance Fax: 1.626.855.4894

For current Warranty click hyperlink [Product Warranty](http://www.murdockmfg.com/terms-and-warranty) or visit: www.murdockmfg.com/terms-and-warranty

Murdock® assumes no responsibility for use of void or superseded data. © Copyright Murdock Mfg., City of Industry, CA Member of Morris Group International. Please visit www.murdockmfg.com for most current specifications.

**COMPLIES WITH
STANDARDS**



NSF/ANSI 61



Federal
Public Law
111-380
(No Lead)

murdock®
SINCE 1853

Member of

MORRIS GROUP
INTERNATIONAL

15125 Proctor Ave, City of Industry,
CA, 91746 U.S.A.
Phone 800-453-7465

www.murdockmfg.com

GYE24 INSTALLATION INFORMATION

PRIOR TO INSTALLATION:

1. Read all installation instructions carefully, before proceeding.
2. Carefully remove fixture from packaging, preventing scratching or damage.
3. Units with -SO, -SOC option require six AA alkaline batteries (Not Provided).
4. Provide mounting surface, sufficient to support the fixture and loads on the fixture.
5. Provide rough-ins as shown on the roughing-in and dimensional drawing, including water supply and drain pipe.
6. Completely flush water supply lines of all foreign debris, before connecting to the fixture.

INSTALLATION: (see drainage & mounting roughing-in)

1. Create sufficient Blockout Area and mounting preparation according to Rough-In and Dimensional Drawing.
2. Mount and secure Wall Mounting Plate to wall horizontally level as shown in Rough-In and Technical Dimensions.
NOTE: Adjust height of bracket if fixture height required differs from dimensions shown.
WARNING: Wall Mounting Plate **MUST** be securely anchored to wall with fasteners sufficient to support a minimum pull-out rating of 1000lbs (454kg).
3. Remove Bottle Filler Bottom Access Panel and set aside in a safe place. Save the screws in a secure location for re-use in later stages of installation.
4. Prepare Fixture Assembly for mounting by ensuring all supply and waste connections are securely attached and ensuring that the 1/2"-13 x 2" Long Bolts (Provided) are loosely attached to the fixture.
5. Mount and secure Fixture Assembly to Wall Mounting Plate by making sure that all four 1/2"-13 x 2" Long Bolts (Provided) align and secure successfully.
6. Make up 3/8" OD Supply Connection to water supply, and 1-1/4" OD waste to P-Trap (by others). Attach Bottle Filler Bottom Access Panel using previously set-aside screws.

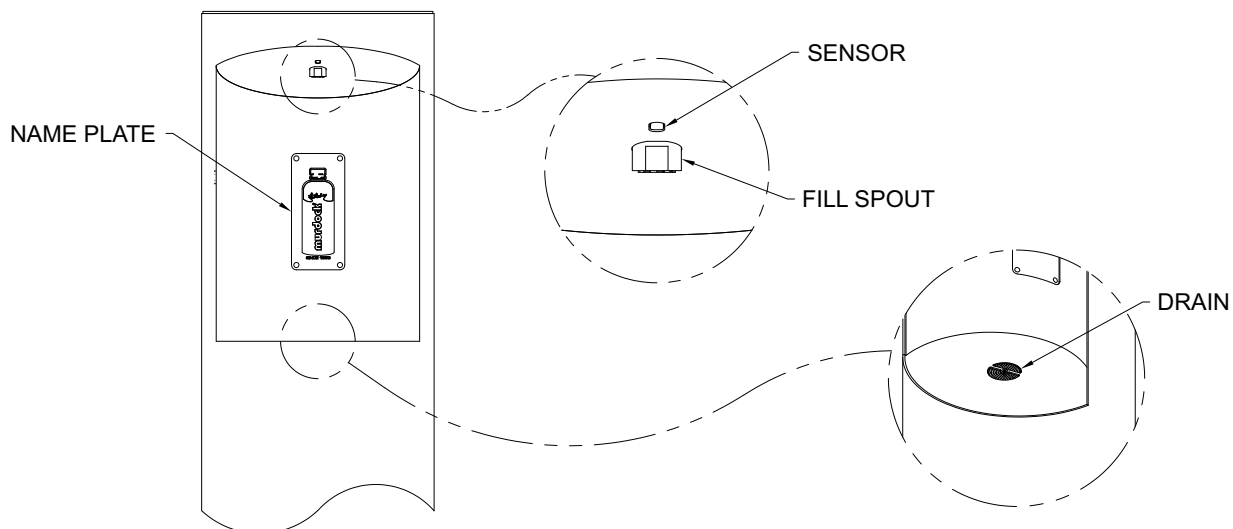
START UP:

Air within the bottle filler system or the structure supply piping will cause an irregular spout outlet stream until purged out by incoming water. Press and hold pushbutton until steady water stream is achieved.

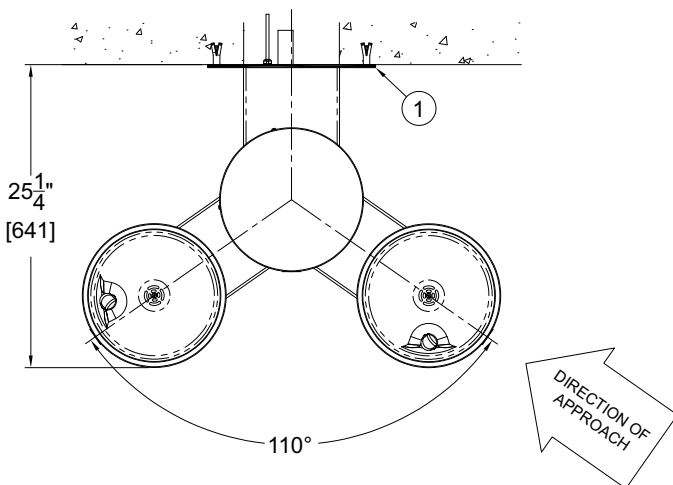
OPERATION INSTRUCTIONS:

Hand operation: Hold container to be filled just below the filler tube in the center of the unit, then depress pushbutton. When the container is almost filled, release the pushbutton. Refer to Flow Adjustment detail on Parts Drawing if needed.

Sensor Operation: Hold container to be filled just below the sensor in the center of the filler spout and then move the container upward and water flow will start automatically. When the container is almost filled, lower the container below the sensor until the water stops flowing. (See label on the bottle filler)

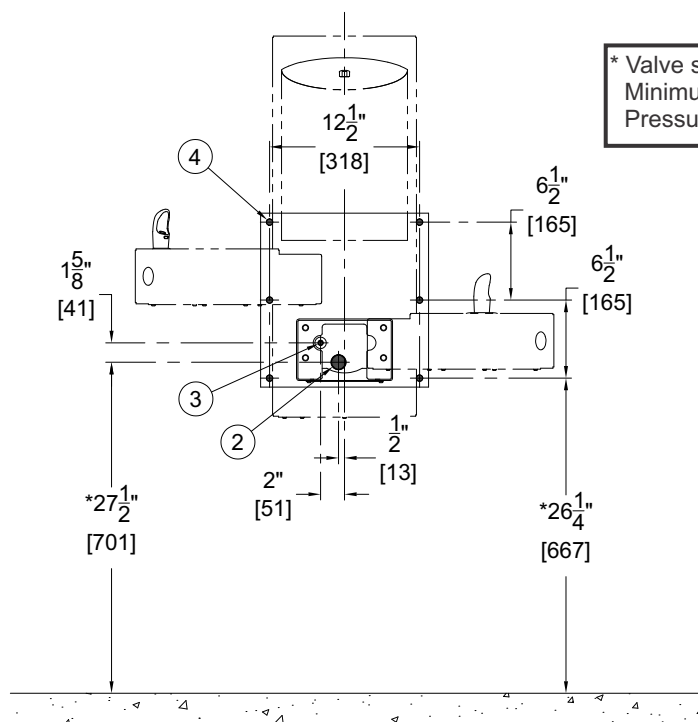


GYE24 ROUGH-IN AND TECHNICAL DIMENSIONS

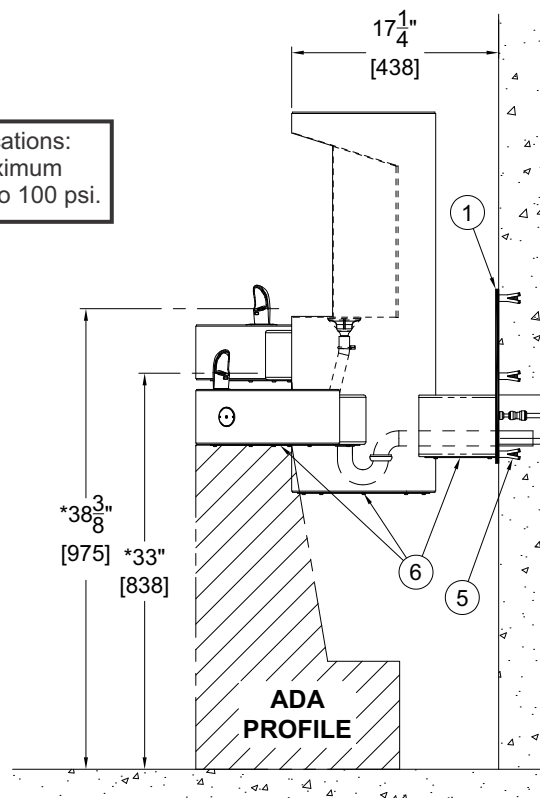


NOTES:

1. 1/4" THICK STAINLESS STEEL MOUNTING PLATE
2. 1-1/4" OD WASTE OUTLET, OPTIONAL -PT P-TRAP SHOWN
3. 3/8" O.D. SUPPLY CONNECTION
4. Ø17/32" (Ø13.5) FIXTURE MOUNTING POINTS 6 PLACES
5. INSTALLER PROVIDED WALL ANCHORS AND ANCHORING HARDWARE
6. REMOVABLE ACCESS PANELS



* Valve specifications:
Minimum/Maximum
Pressure 30 to 100 psi.



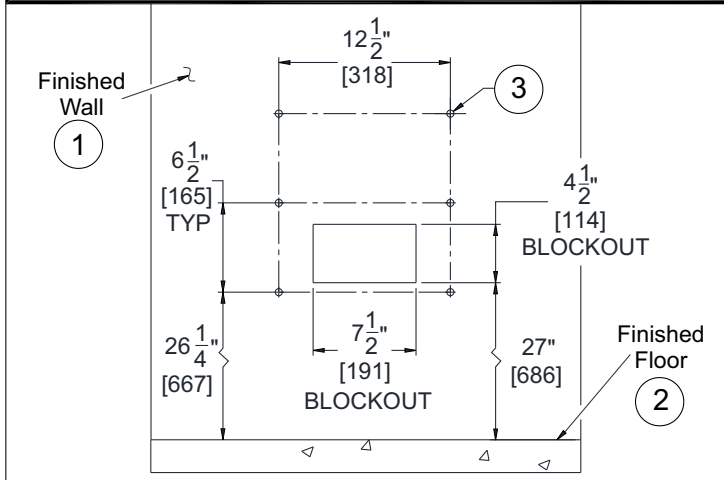
VIEW FROM FRONT FOR BOTH
GYE24-R (SHOWN) AND GYE24-L

GENERAL NOTES:

1. ALL DIMENSIONS ARE IN INCHES [MM].
- *2. DIMENSIONS SHOWN ARE FOR RECOMMENDED ADULT HEIGHT. ADJUST VERTICAL DIMENSIONS AS NECESSARY TO COMPLY WITH FEDERAL, STATE, & LOCAL CODES.
3. STOP VALVE NOT PROVIDED.

GYE24 FIXTURE MOUNTING AND ANCHORING

- 1** Make up Mounting Rough-In and Blockout Area into sufficient wall backing.

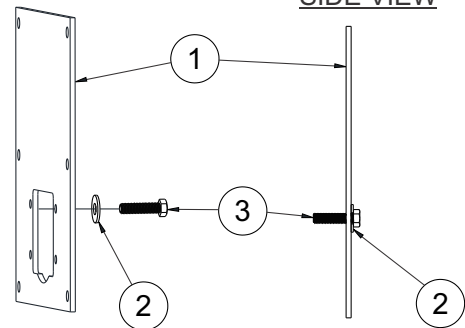


IMPORTANT: Industry standard wall backing for wall hung fixtures is required. Installer provided wall anchors and wall anchoring hardware must be appropriate for wall construction and have a minimum pull-out rating of 1000lbs (454kg).

- 1 Finished Wall
- 2 Finished Floor
- 3 Ø1/2" Wall Anchors (Not Provided)

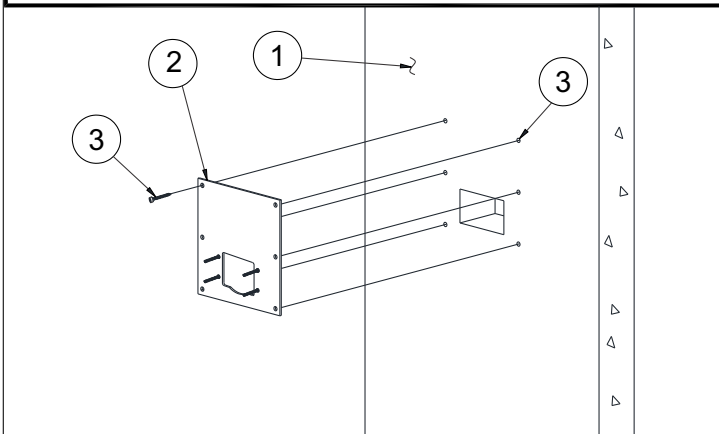
- 2** Install 1/2"-13 x 2" Long Bolts (Provided) into the Mounting Plate from rear.

SIDE VIEW



- 1 Mounting Plate
- 2 1/2" Flat Washer
- 3 1/2"-13 x 2" Long Bolts (Provided)

- 3** Secure Wall Mounting Plate to the Finished Wall using Installer Provided Hardware.

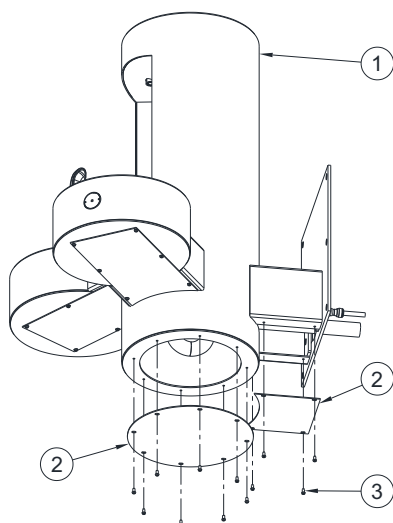


NOTE: It is recommended to level and plumb wall Mounting Plate prior to mounting fixture assembly.

- 1 Finished Wall
- 2 Mounting Plate
- 3 Ø1/2" Installer Provided Wall Fasteners/Anchors

GYE24 FIXTURE MOUNTING AND ANCHORING (CONTINUED)

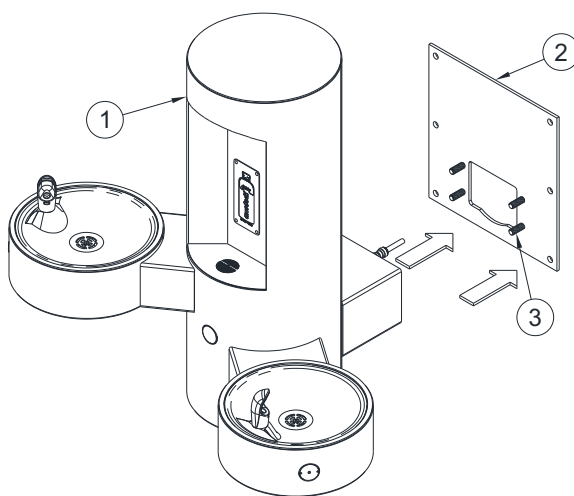
4 Remove Bottle Filler Bottom Access Panel and set aside for later Installation.



- 1 Fixture Assembly
- 2 Bottle Filler Bottom Access Panels
- 3 #10-32 UNF Hex Screws (Provided)

NOTE: It is recommended to rough-in supply and waste lines ensuring Mounting Plate is level and plumb prior to securing fixture assembly to Mounting Plate.

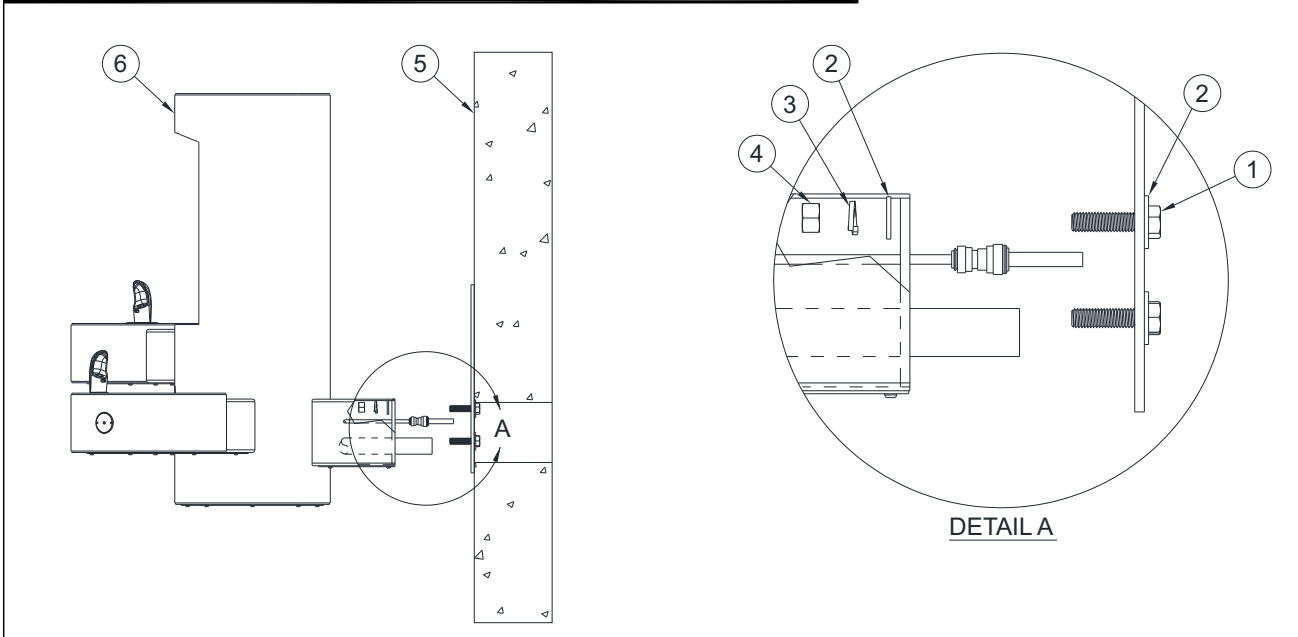
5 Mount Fixture Assembly onto the Mounting Plate by sliding unit over the 1/2"-13 x 2" Long Bolts.



- 1 Fixture Assembly
- 2 Mounting Plate
- 3 1/2"-13 UNC x 2" Long, Bolts provided

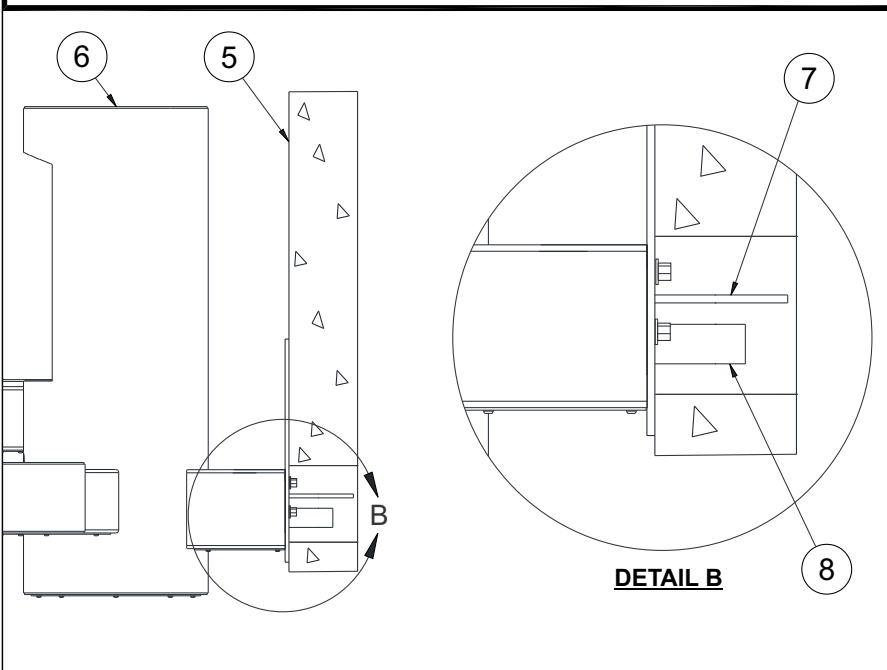
GYE24 FIXTURE MOUNTING AND ANCHORING (CONTINUED)

6 Secure Fixture Assembly to Mounting Plate using 1/2" Hardware (Provided).



7A

Make up 3/8" OD Supply Connection to water supply, and 1-1/4" OD waste to P-Trap (by others). Attach Bottle Filler Bottom Access Panel using previously set-aside screws.



**STANDARD
MODELS**

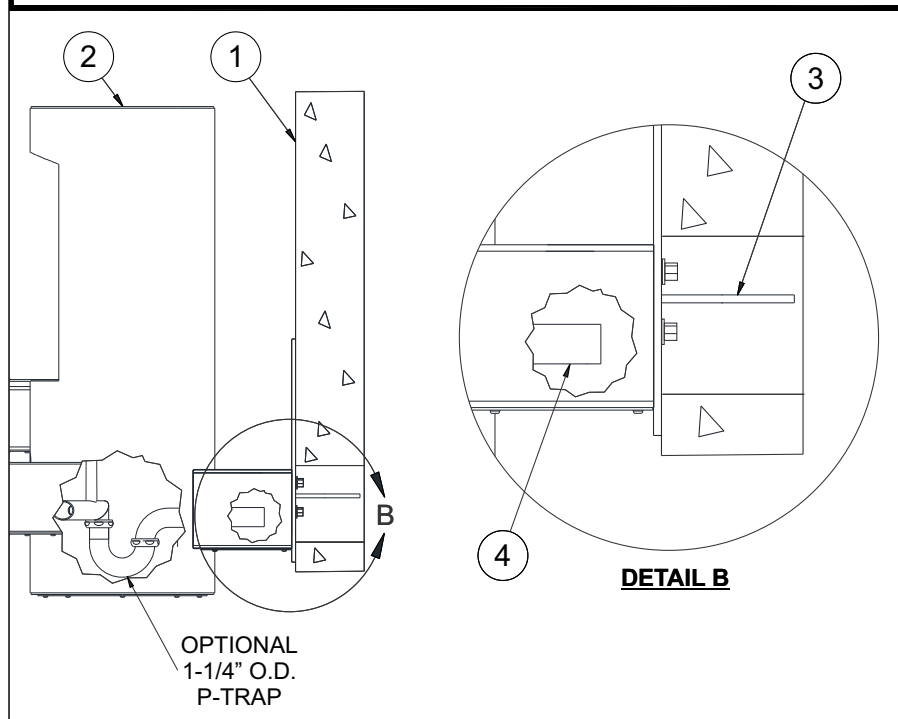
- ① 1/2"-13 x 2" Long Bolts (Provided)
- ② 1/2" Flat Washers (Provided)
- ③ 1/2" Helical Lockwasher (Provided)
- ④ 1/2"-13 UNC Hex Nut (Provided)
- ⑤ Finished Wall
- ⑥ Fixture Assembly
- ⑦ 3/8" OD Supply Connection
- ⑧ 1-1/4" OD Waste Outlet for P-Trap Behind Wall (Standard) P-Trap provided by others

NOTE: FOR MODELS WITH (-PT) P-TRAP OPTION, REFER TO STEP 7B.

GYE24-PT FIXTURE MOUNTING AND ANCHORING (CONTINUED)

7B

Make up 3/8" OD Supply Connection to water supply, and 1-1/4" OD Optional P-Trap Waste Outlet (Provided). Attach Bottle Filler Bottom Access Panel using previously set-aside screws.



**MODELS WITH
-PT OPTION**

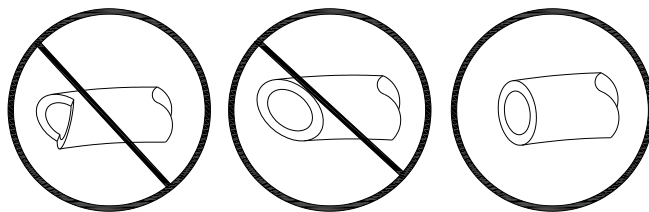
- ① Finished Wall
- ② Fixture Assembly
- ③ 3/8" OD Supply Connection
- ④ 1-1/4" OD Waste Outlet with Optional P-Trap (Provided)

PUSH-IN FITTING INSTALLATION

NOTE: FITTINGS AND TUBE SHOULD BE KEPT CLEAN, BAGGED AND UNDAMAGED PRIOR TO INSTALLATION.

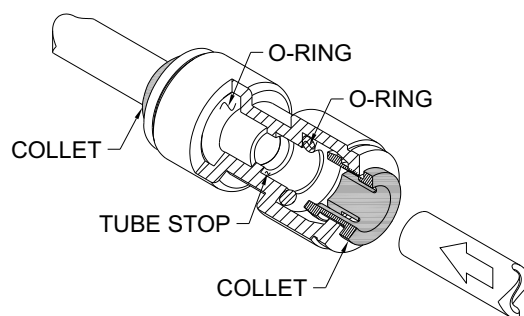
TO CUT TUBE:

Cut to fit length of 1/4" PE tubing and remove any burrs or sharp edges. Ensure that the outside diameter is free from score marks. Tube ends should be square.

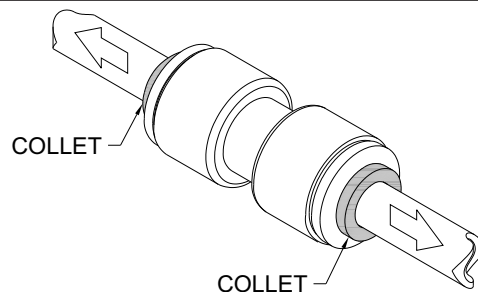


INSERTING THE TUBE:

1. Firmly and fully insert the tubing end into the push-in fitting up to the tube stop located approximately 1/2" deep.

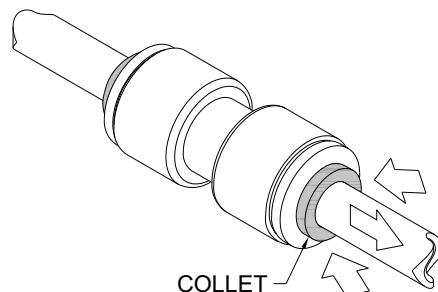


2. Pull on the fitted tubing to ensure it is secure. Tube should not come free from the fitting. Water test the connection assembly prior to leaving the site to ensure there are no leaks.



DISCONNECTING THE TUBE:

To disconnect the tube from the fitting ensure that the water line is depressurized. Push collet square towards the push-in fitting body and hold. While holding the collet in, pull on the PE tubing to remove from the push-in fitting.



GYE24 TROUBLESHOOTING AND MAINTENANCE

TROUBLESHOOTING:

1. RESTRICTED OR NO WATER FLOW:

- a. Ensure Water Supply service stop valve is fully open.
- b. Verify minimum 20 psig supply line flow pressure.
- c. Check for twist or kinks in spout tubing.
- d. Check the water inlet "Y" strainer. Sediment from the main supply can get trapped in the screen along with installation materials such as pipe dope and flux. The screen should be cleaned and checked on a regular basis and replace if needed.
- e. Flow control in solenoid valve outlet elbow clogged remove & clean.

SENSOR TROUBLESHOOTING:

1. IF LIGHT WITHIN SENSOR DOES NOT FLASH ONCE WHEN USER IS WITHIN RANGE:

- a. Verify 9VDC output of battery pack.
- b. Replace defective batteries.
- c. Sensor in "Security Mode" after 30 seconds of constant detection. Remove source of detection and wait 30 second before checking.
- d. Sensor is picking up a highly reflective surface. Eliminate cause of reflection and wait 30 seconds before checking.

2. IF LIGHT WITHIN SENSOR LENS FLASHES ONCE WHEN THE USER IS WITHIN RANGE:

- a. Repair bad connection from sensor to solenoid.
- b. There is debris or scale in the solenoid assembly. Remove solenoid, pull out plunger and spring. Clean with scale remover solution.
- c. There is debris or scale in center or two holes in convolution of the water diaphragm. Remove and clean.

CLEANING & MAINTENANCE GUIDE:

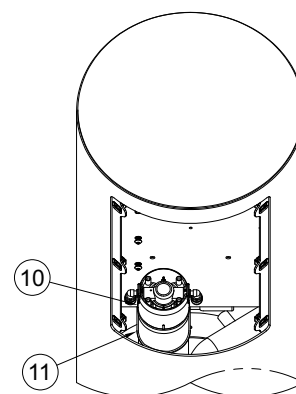
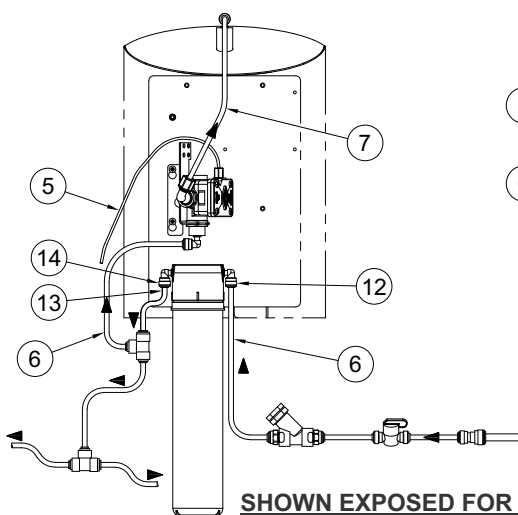
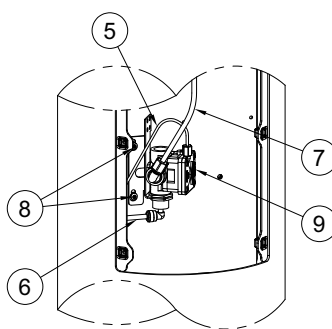
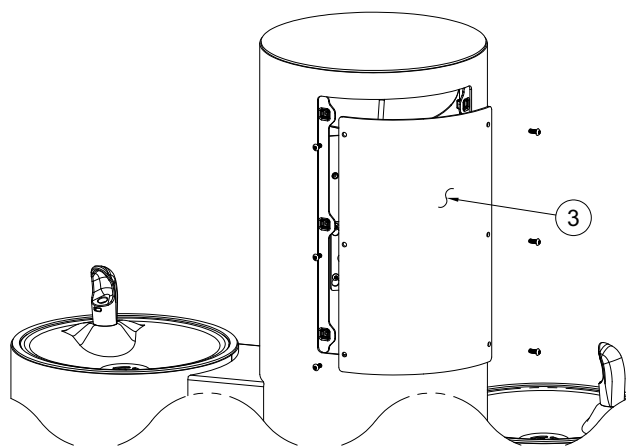
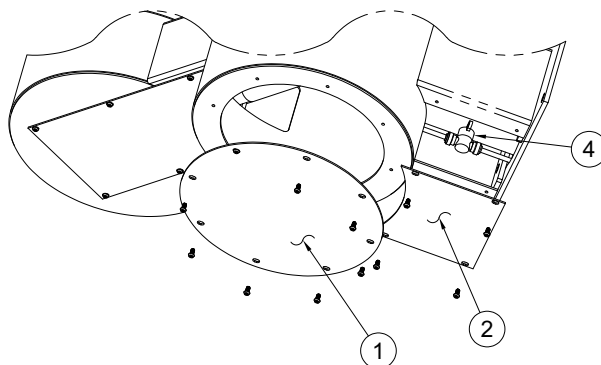
For Powder coated units: Units should be cleaned using a mild soap solution with a sponge or cotton cloth. Wipe down surfaces then rinse with clean water.

For Stainless steel units:

1. To remove water spots or rust spots, stainless steel cleaner/polish on a cloth is recommended.
2. If there are stubborn spots or if you wish to treat a scratch, synthetic abrasive general purpose pads such as scotch brite are recommended.
3. Apply stainless steel cleaner/polish to the synthetic abrasive pads and carefully rub the panel with the grain.
4. DO NOT use harsh chemicals, abrasive or petroleum based cleaners. Use of these will void the Murdock warranty. DO NOT use abrasives on powder coated units.
5. Stainless steel should be kept clean at all times. If a coating of stainless steel cleaner/polish is maintained, stainless steel surfaces will retain their new, clean & polished appearance indefinitely.
6. Periodically remove access panel of cooler and clean out inline "Y" strainer

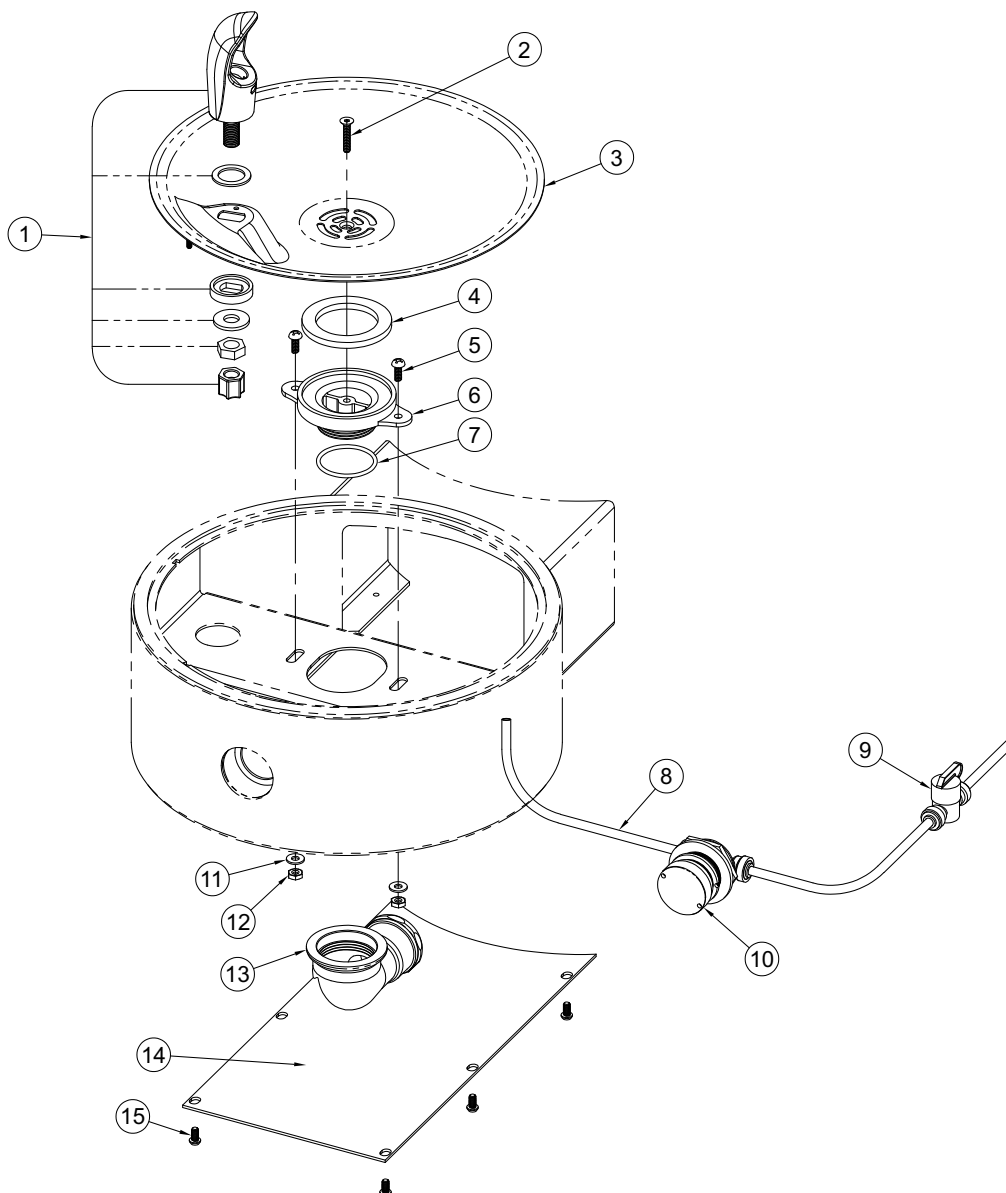
GYE24 BOTTLE FILLER FILTER INSTALLATION

1. Remove bottom access panels **1** and **2** and bottle filler access panel **3**, which allows access to the filter. Turn the inlet valve **4** 1/4 turn clockwise to close.
2. Disconnect 1/8" air tube **5**, 3/8" supply tube **6**, and riser tube **7**.
3. Loosen valve mounting screws **8**, lift valve assembly **9** up slightly and pull outward to remove.
5. Insert filter **10** into filter holder **11**.
6. Reinstall valve assembly **9** by sliding over mounting screws **8** and pushing downward then tighten screws **8**.
7. Install 5/8" supply tubing **6** into filter inlet connection **12** and connect 5/8" tubing **13** to filter outlet connection **14** and run tubing as shown in detail. Reinstall 1/8" air tube **5**.
8. Open Inlet Supply Valve slowly and activate Drinking Fountain or Bottle Filler and inspect for leaks. If present correct. If no leaks present, activate the unit and flush the filter: 6 Gallons (23 Liters)
 - a. If using Drinking Fountain Bubbler, flush for 12 Minutes
 - b. If using Bottle Filler, flush for 6 Minutes
9. After flushing Reinstall all access panels **1**, **2**, and **3**.



GYE24 DRINKING FOUNTAIN ASSEMBLY:

Extended Arms, Pushbutton (Standard), Repair Parts

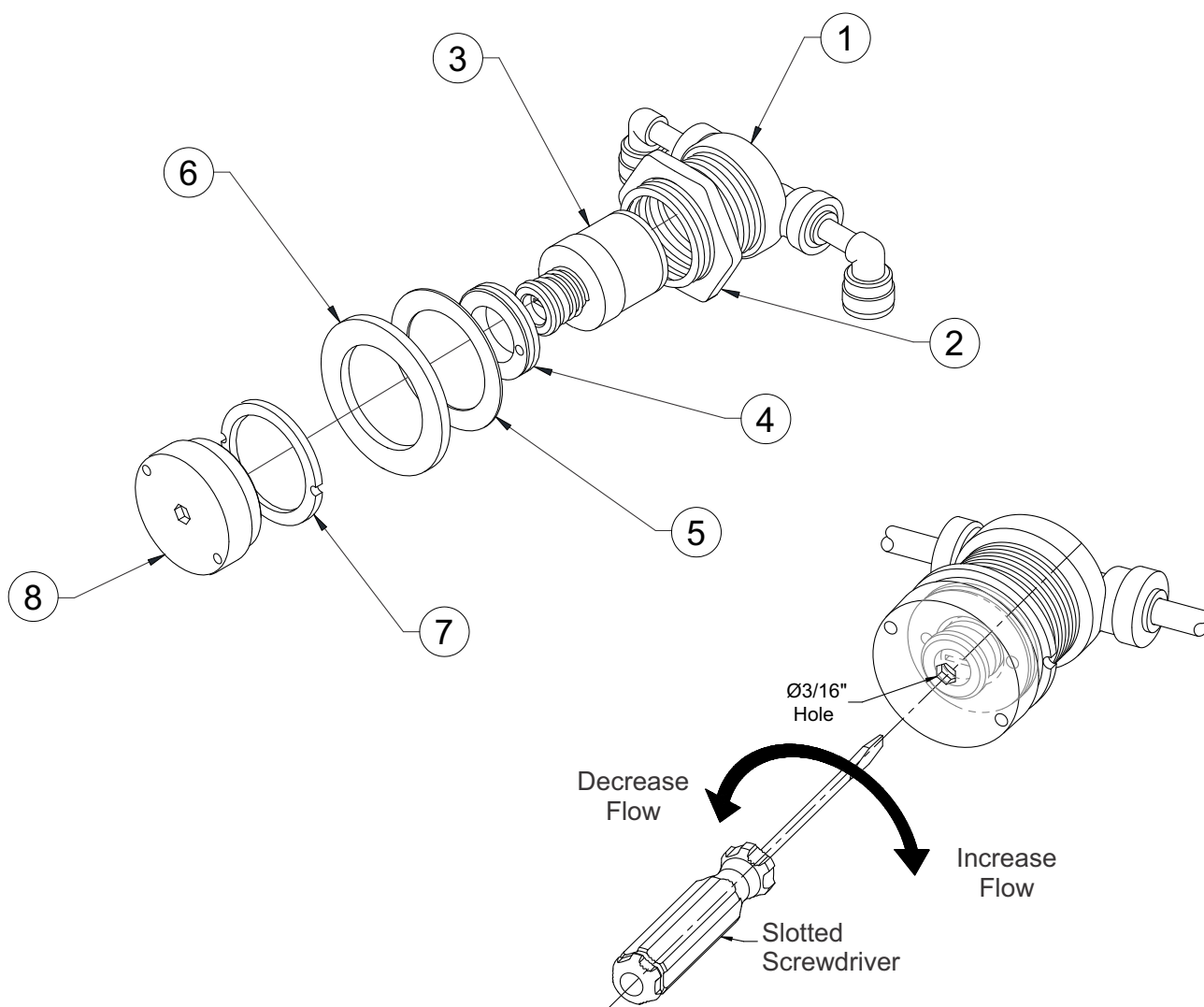


ITEM	PART NUMBER	DESCRIPTION	ITEM	PART NUMBER	DESCRIPTION
1	7000-012-001	DRINKING BUBBLER ASSY, 7/16-20 UNF, SS	9	7000-420-000	1/4 TURN SHUTOFF VALVE
2	0152-010-000	#10-32 UNF x 1" LONG HEX FLAT HEAD SCREW	10	7000-065-001	-CV RECESSED PB W/ CARTRIDGE VALVE ASSY
3	7007-011-001	11" DIAMETER ROUND BOWL, SS	11	0331-004-000	#10 FLAT WASHER, SS
4	7000-006-000	FLAT FOAM ADAPTER GASKET	12	0302-004-000	#10-32 UNF HEX NUT, SS
5	0116-003-000	#10-32 UNF x 1/2" LONG PHILLIPS HEAD SCREW	13	7000-017-001	1-1/4" CLOSE ELBOW, SLIP JOINT
6	7000-005-199	1-1/4" NPSM DRAIN ADAPTER	14	CONTACT FACTORY	ACCESS PLATE, ROUND SIDE MOUNT
7	0401-128-000	O-RING, WASTE ADAPTER	15	0112-001-000	#10-32 UNF x 3/8" LONG HEX SCREW
8	2169-010-199	1/4" OD LDPE TUBING (10 FT)			

GYE24 DRINKING FOUNTAIN CARTRIDGE VALVE

PUSHBUTTON ASSEMBLY:

Repair Parts

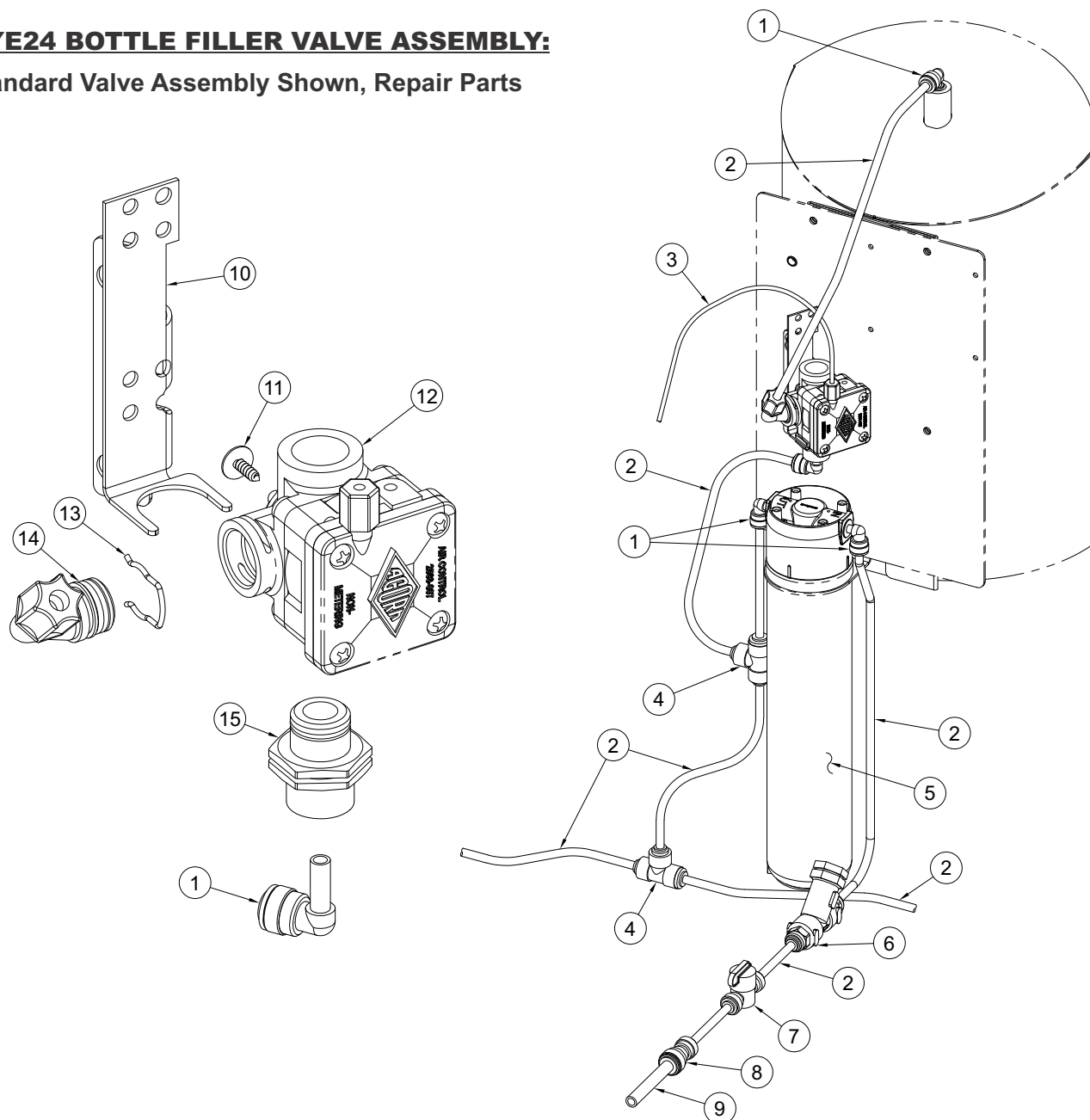


FLOW ADJUSTMENT

ITEM	PART NUMBER	DESCRIPTION	ITEM	PART NUMBER	DESCRIPTION
1	7000-050-000	REGULATOR VALVE BODY	5	0411-022-000	FIBER RING 1-3/4" O.D. x 1-1/4" I.D.
2	7000-053-199	JAM NUT, 1-1/4"	6	0431-222-000	RUBBER GASKET
3	7000-060-000	FLOW REGULATOR CARTRIDGE (0.5 GPM)	7	7000-063-199	BRASS RETAINER RING
4	7000-051-000	RETAINING NUT, VALVE	8	7000-091-001	RECESSED PUSH BUTTON W/ HEX ASSY

GYE24 BOTTLE FILLER VALVE ASSEMBLY:

Standard Valve Assembly Shown, Repair Parts

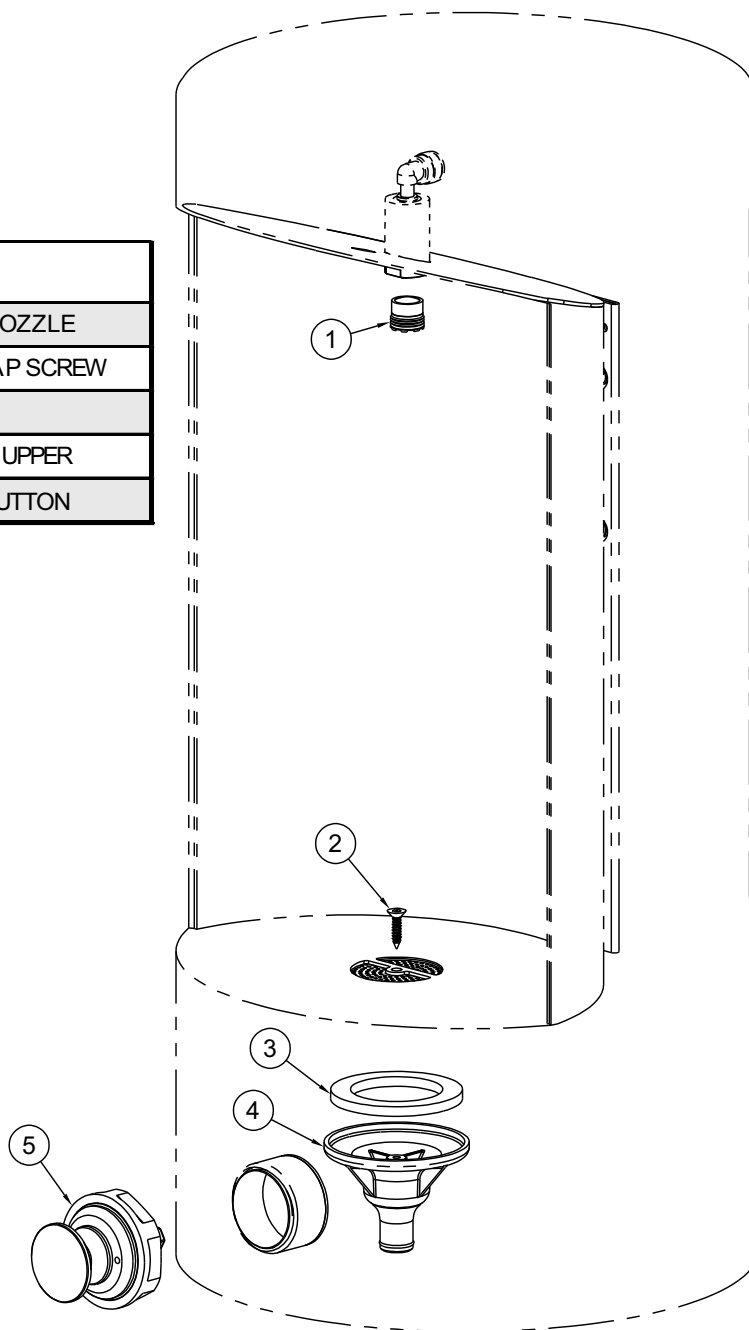


ITEM	PART NUMBER	DESCRIPTION	ITEM	PART NUMBER	DESCRIPTION
1	1895-709-000	1/4" OD x 1/4" OD STEM PUSH-IN ELBOW	9	2170-002-500	3/8" OD LLDPE TUBING 2-1/2" LONG
2	2169-010-199	1/4" OD LLDPE TUBING (BLUE) 10 FT.	10	4125-157-199	VALVE MOUNTING PLATE
3	2150-010-199	1/8" OD LLDPE CLEAR AIR TUBING (10 FT.)	11	0124-010-000	#10 x 1/2" LG PHILLIP TRUSS HEAD SCREW
4	1895-710-000	1/4" PUSH-IN UNION TEE	12	2570-102-001	RH VALVE BODY CLOSED END ASSEMBLY
5	7012-347-000	RWF3000 3000 GALLON REPLACEMENT FILTER	13	0326-100-000	RETAINING CLIP, AIR-CONTROL VALVE
6	7013-210-001	1/4" OD "Y" STRAINER ASSEMBLY	14	2570-051-001	1/4" OD PLASTIC ELBOW ASSEMBLY
7	7000-420-000	1/4" OD PUSH-IN 1/4" TURN SHUT-OFF VALVE	15	2800-114-001	1/4" JOHN GUEST INLET ADAPTER ASSEMBLY
8	1895-123-000	1/4" x 3/8" OD TUBE UNION PUSH-IN CON			

GYE24 BOTTLE FILLER ASSEMBLY:

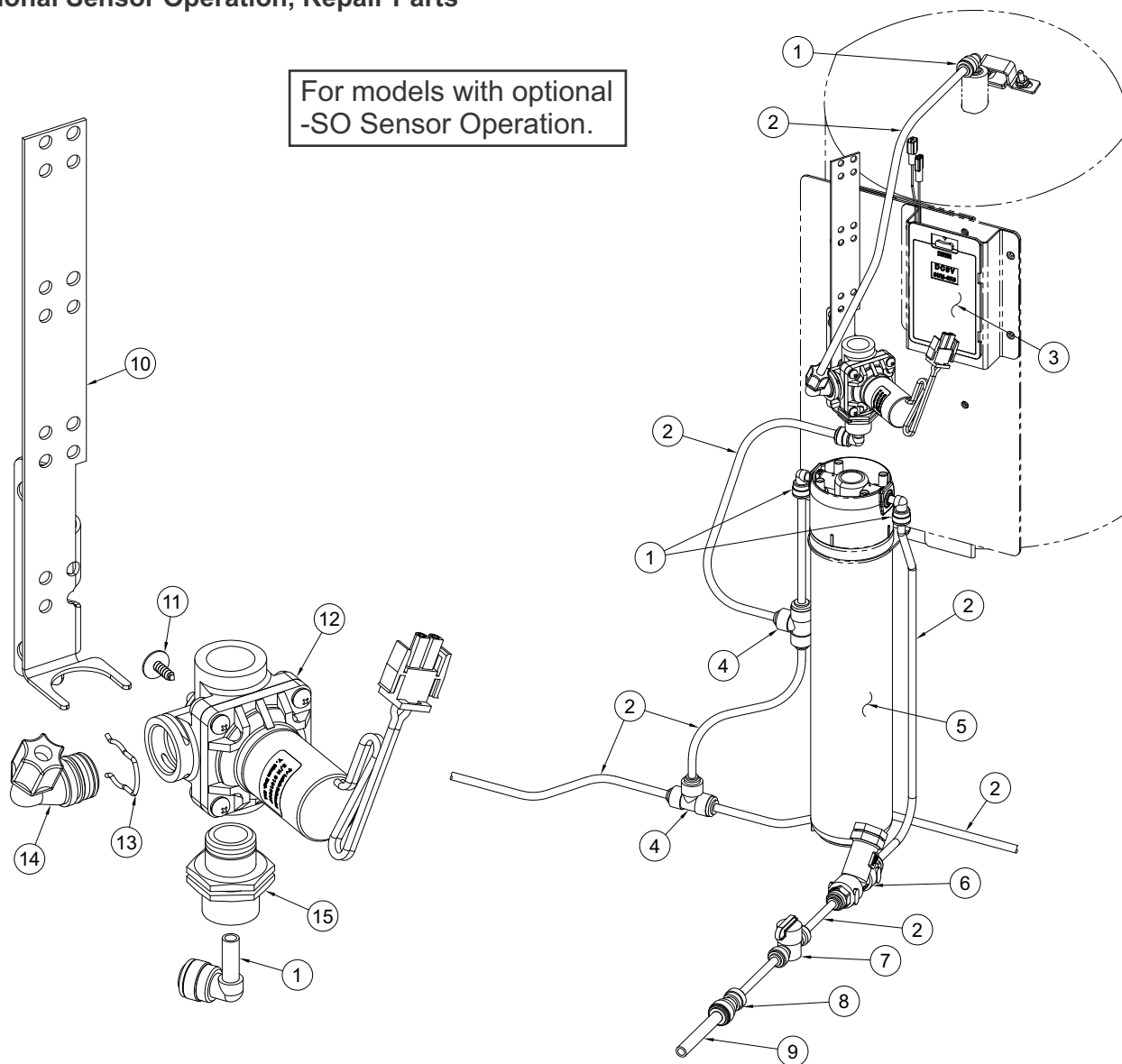
Pushbutton (Standard), Repair Parts

ITEM	PART NUMBER	DESCRIPTION
1	7013-115-000	1.5 GPM LAMINAR FLOW NOZZLE
2	0124-033-000	#8 x 3/4" LONGHD SELF-TAP SCREW
3	7000-006-000	DRAIN ADAPTER GASKET
4	7003-182-000	ACCESS DRAIN, BI-LEVEL, UPPER
5	7002-125-001	FRU AIR-CONTROL PUSHBUTTON



GYE24-SO BOTTLE FILLER VALVE ASSEMBLY:

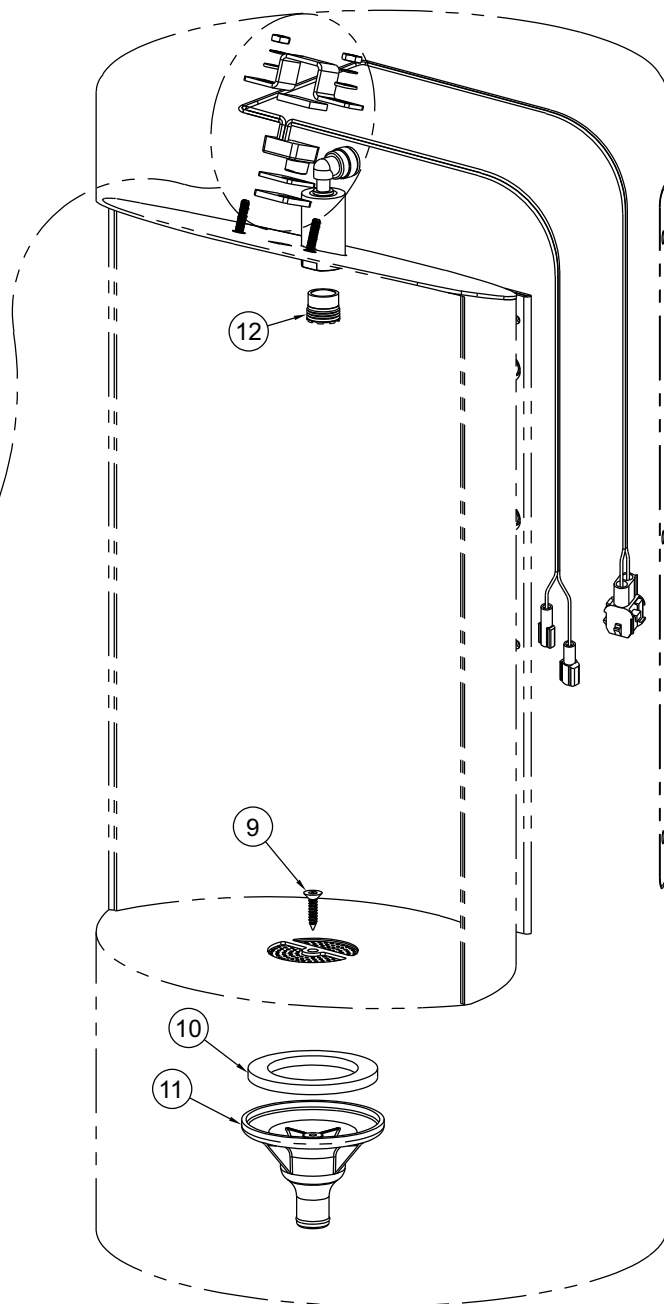
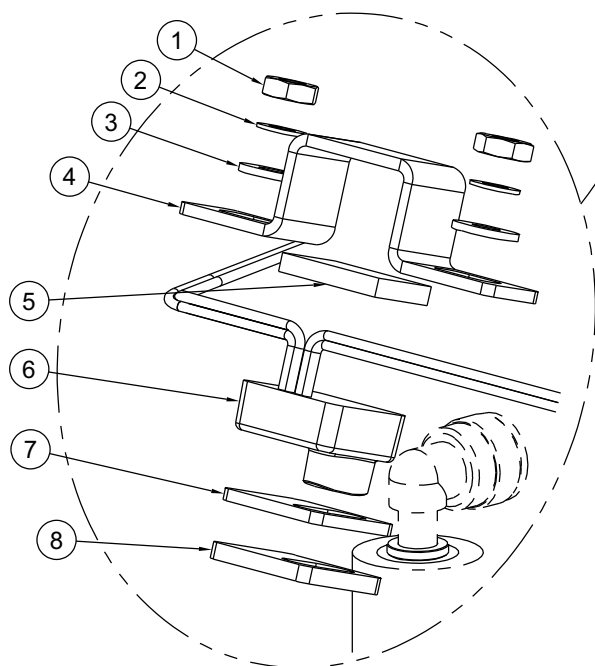
Optional Sensor Operation, Repair Parts



ITEM	PART NUMBER	DESCRIPTION	ITEM	PART NUMBER	DESCRIPTION
1	1895-709-000	1/4" OD x 1/4" OD STEM PUSH-IN ELBOW	9	2170-002-500	3/8" OD LLDPE TUBING 2-1/2" LONG
2	2169-010-199	1/4" OD LLDPE TUBING (BLUE) 10 FT.	10	4125-141-199	VALVE MOUNTING PLATE
3	0710-361-001	AA 6-PACK BATTERY HOLDER	11	0124-010-000	#10 x 1/2" LG PHILLIP TRUSS HEAD SCREW
4	1895-710-000	1/4" PUSH-IN UNION TEE	12	2570-102-001	RH VALVE BODY CLOSED END ASSEMBLY
5	7012-347-000	RWF3000 3000 GALLON REPLACEMENT FILTER	13	0326-100-000	RETAINING CLIP, AIR-CONTROL VALVE
6	7013-210-001	1/4" OD "Y" STRAINER ASSEMBLY	14	2570-051-001	1/4" OD PLASTIC ELBOW ASSEMBLY
7	7000-420-000	1/4" OD PUSH-IN 1/4" TURN SHUT-OFF VALVE	15	2800-114-001	1/4" JOHN GUEST INLET ADAPTER ASSEMBLY
8	1895-123-000	1/4" x 3/8" OD TUBE UNION PUSH-IN CON			

GYE24-SO BOTTLE FILLER ASSEMBLY:

Optional Sensor Operation, Repair Parts

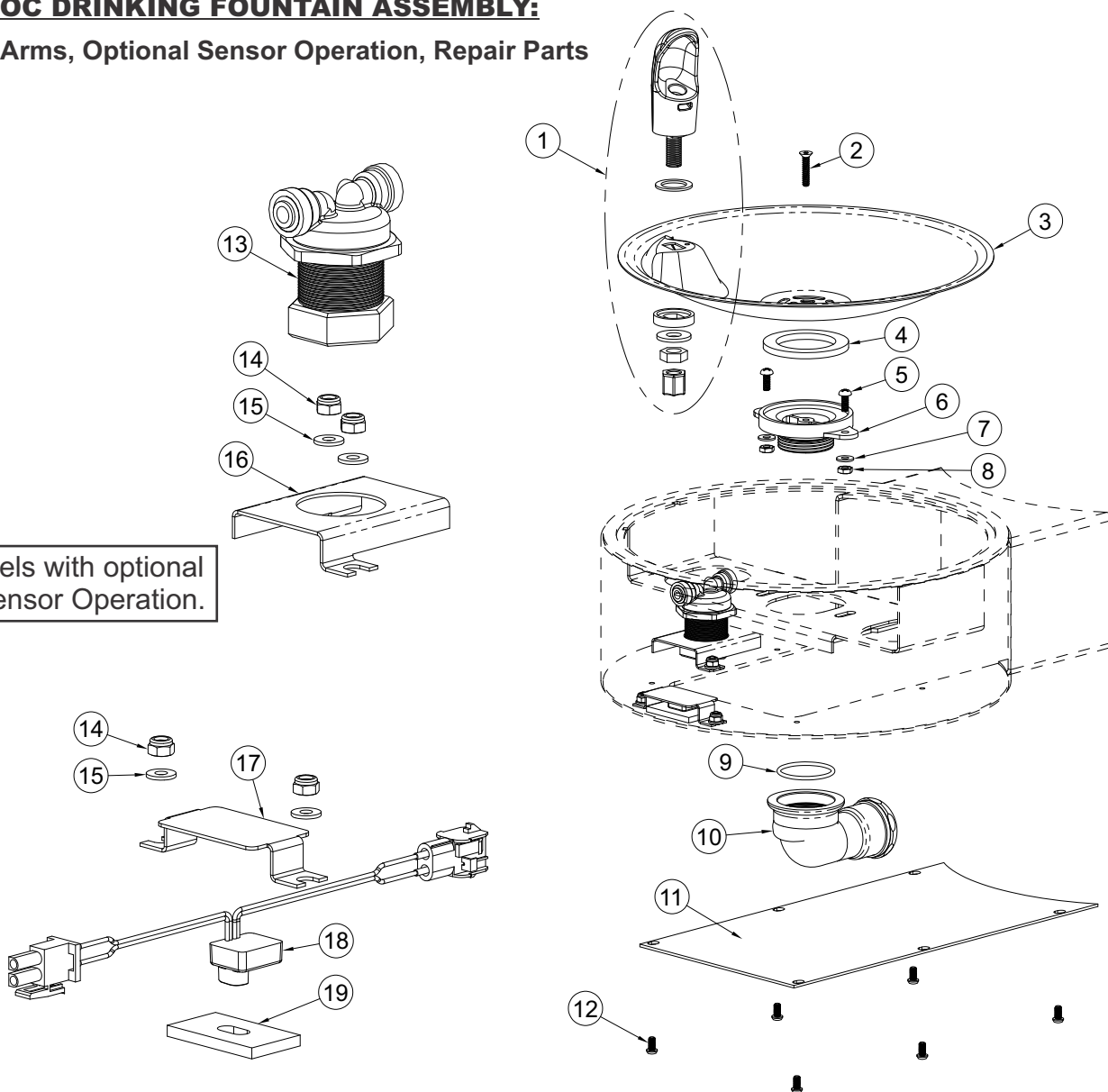


ITEM	PART NUMBER	DESCRIPTION	ITEM	PART NUMBER	DESCRIPTION
1	0302-003-000	#8-32 UNF HEX NUT, SS	7	7013-013-199	14 GA. STAINLESS STEEL SPACER
2	6527-108-000	#8 INTERNAL TOOTH LOCKWASHER	8	7013-009-199	12 GA. STAINLESS STEEL SPACER
3	0331-023-000	#8 FLAT WASHER, SS	9	0124-033-000	#8 x 3/4" SELF TAPPING SCREW C/R
4	7013-019-199	FOAM TAPE 7/8" x 1/5" x 1/8"	10	7000-006-000	DRAIN ADAPTER GASKET
5	7013-010-199	NANO SENSOR BRACKET	11	7003-182-000	ACCESS DRAIN, BI-LEVEL, UPPER
6	2563-386-002	BLUE NANO SENSOR ASSEMBLY	12	7013-115-000	1.5 GPM LAMINAR FLOW NOZZLE

GYE24-SOC DRINKING FOUNTAIN ASSEMBLY:

Extended Arms, Optional Sensor Operation, Repair Parts

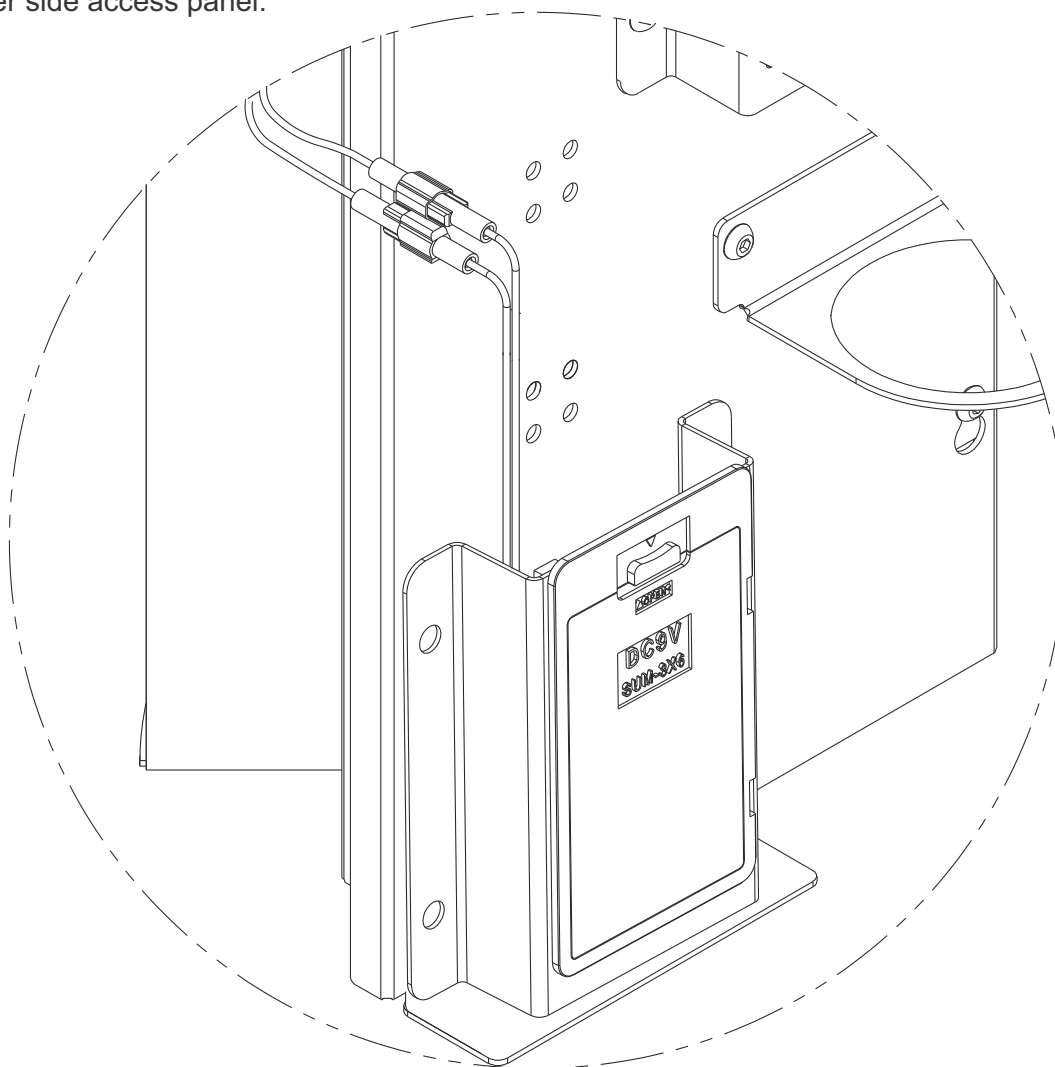
For models with optional
-SOC Sensor Operation.



ITEM	PART NUMBER	DESCRIPTION	ITEM	PART NUMBER	DESCRIPTION
1	7000-012-001	DRINKING BUBBLER ASSY, 7/16-20 UNF, SS	11	CONTACTFACTORY	ACCESS PLATE, ROUND SIDE MOUNT
2	0152-010-000	#10-32 UNF x 1" LONG HEX FLAT HEAD SCREW	12	0112-001-000	#10-32 UNF x 3/8" HEX BH CR SCREW
3	7007-011-001	11" DIAMETER ROUND BOWL, SS	13	7000-050-001	VALVE CARTRIDGE ASSEMBLY
4	7000-006-000	FLAT FOAM ADAPTER GASKET	14	0308-009-000	#8-32 UNF NYLON INSERT LOCKNUT
5	0116-003-000	#10-32 UNF x 1/2" LONG PHILLIPS HEAD SCREW	15	0331-023-000	#8 FLAT WASHER, SS
6	7000-005-199	1-1/4" NPSM DRAIN ADAPTER	16	4125-085-199	CARTRIDGE VALVE MOUNTING BRACKET
7	0331-023-000	SS WASHER	17	7003-958-199	SENSOR HOLD DOWN BRACKET
8	0308-009-000	#8-32 NYLON LOCKNUT	18	2563-386-002	STERN NANO SENSOR, BLUE 10 SEC
9	0401-128-000	O-RING, WASTE ADAPTER	19	7001-203-199	NANO SENSOR SPACER W/ BUSHING
10	7000-017-001	1-1/4" CLOSE ELBOW, SLIP JOINT			

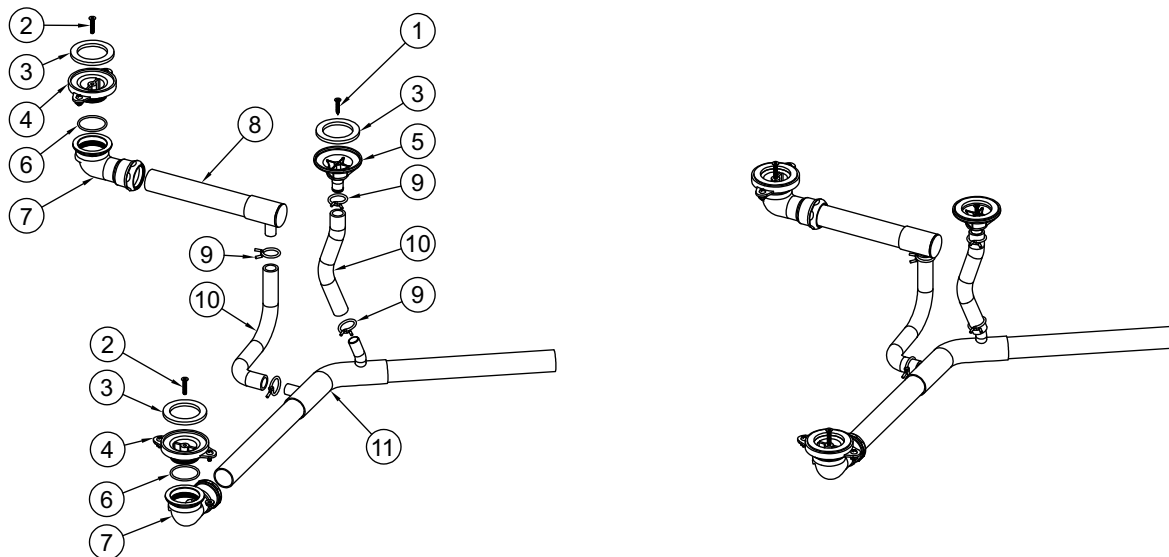
GYE24-SO BATTERY REPLACEMENT

1. Loosen and remove bottle filler side access panel and remove battery pack from placed location. Do not disconnect the wires from the battery pack unless necessary.
2. Replace the six alkaline AA batteries while observing polarity.
3. Return the battery pack back to mounted location and test for proper operation. Then attach bottle filler side access panel.

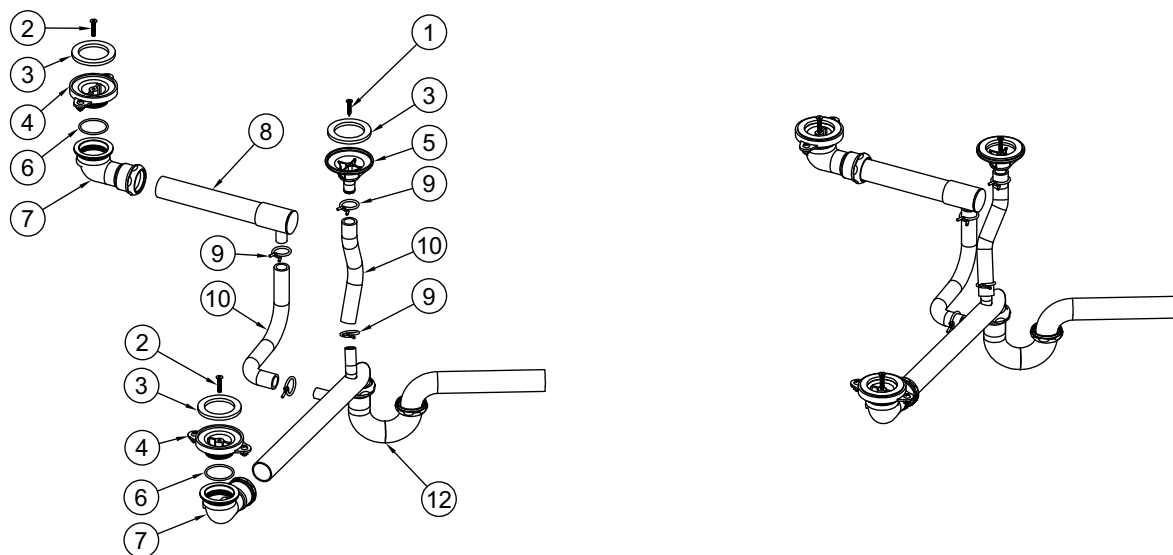


GYE24-R RIGHT HAND WASTE ASSEMBLIES:

Connections and Assembly, Repair Parts



STANDARD GYE24-R - RIGHT HAND WASTE ASSEMBLY

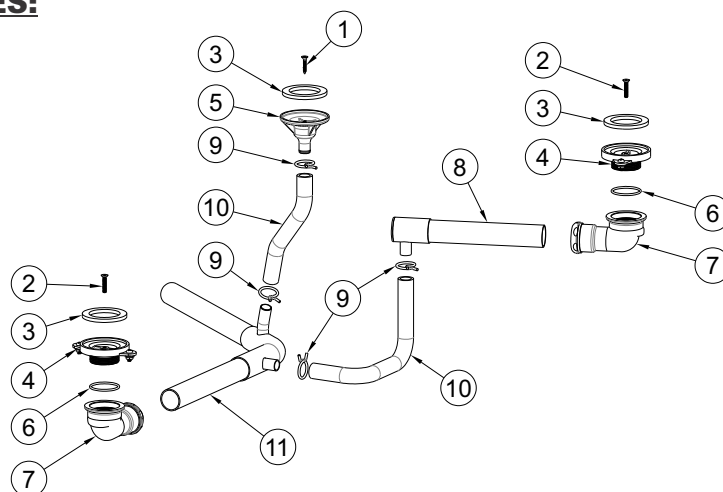
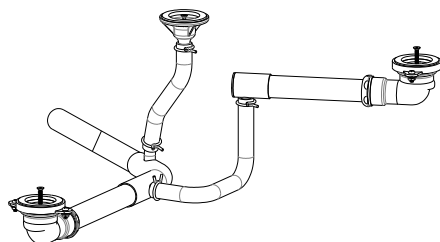


GYE24-R-PT - RIGHT HAND P-TRAP WASTE ASSEMBLY

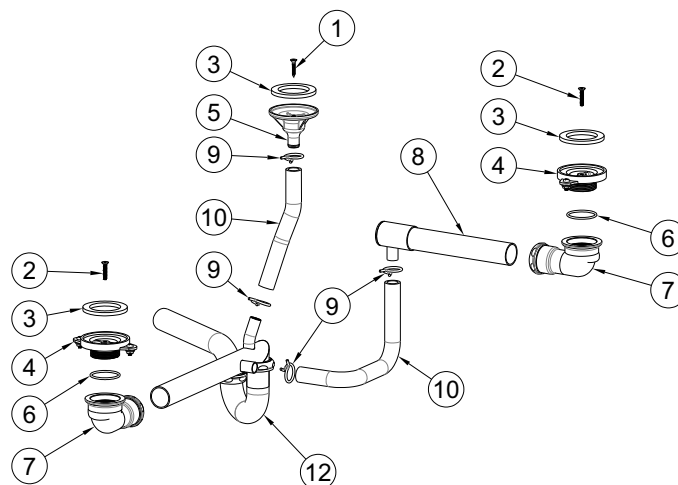
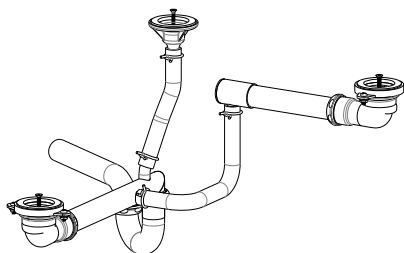
ITEM	PART NUMBER	DESCRIPTION	ITEM	PART NUMBER	DESCRIPTION
1	0124-037-000	#8 x 3/4" HEX SELF TAPPING SCREW	7	7000-017-001	ELBOW, ORING x 1-1/4" COMPRESSION
2	0152-010-000	#10-32 x 1" HEX FLAT HEAD SCREW	8	4125-166-001	UPPER DF ARM WASTE SUB-ASSEMBLY
3	7000-006-000	DRAIN ADAPTER GASKET	9	7003-184-000	7/8" SPRING HOSE CLAMP
4	7000-005-199	DRAIN ADAPTER	10	7003-183-000	ANSI/AHAM CERTIFIED FLEX HOSE, 5/8 x 7/8
5	7003-182-000	ACCESS DRAIN, BI-LEVEL, UPPER	11	4125-168-001	WASTE TUBING RH ASSEMBLY
6	0401-128-000	WASTE ADAPTER O-RING	12	4125-165-001	RIGHT HAND P-TRAP WASTE ASSEMBLY

GYE24-L LEFT HAND WASTE ASSEMBLIES:

Connections and Assembly, Repair Parts



STANDARD GYE24-L - LEFT HAND WASTE ASSEMBLY



GYE24-L-PT - LEFT HAND P-TRAP WASTE ASSEMBLY

ITEM	PART NUMBER	DESCRIPTION	ITEM	PART NUMBER	DESCRIPTION
1	0124-037-000	#8 x 3/4" HEX SELF TAPPING SCREW	7	7000-017-001	ELBOW, ORING x 1-1/4" COMPRESSION
2	0152-010-000	#10-32 x 1" HEX FLAT HEAD SCREW	8	4125-166-001	UPPER DF ARM WASTE SUB-ASSEMBLY
3	7000-006-000	DRAIN ADAPTER GASKET	9	7003-184-000	7/8" SPRING HOSE CLAMP
4	7000-005-199	DRAIN ADAPTER	10	7003-183-000	ANSI/AHAM CERTIFIED FLEX HOSE, 5/8 x 7/8
5	7003-182-000	ACCESS DRAIN, BI-LEVEL, UPPER	11	4125-167-001	WASTE TUBING LEFT HAND ASSEMBLY
6	0401-128-000	WASTE ADAPTER O-RING	12	4125-169-001	LEFT HAND P-TRAP WASTE ASSEMBLY