



ELECTRONIC RECESSED THERMOSTAT - RAFFAELLO 230 - TE215VU ~

IN CONFORMITY WITH NORMATIVES

EN 60730-1, EN 60730-2-9



WARNINGS BEFORE INSTALLATION

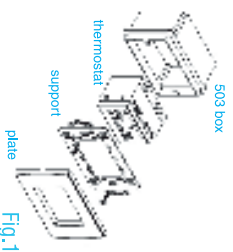
- The device must be installed by qualified personnel.
- The device must be positioned about 1.5 meters above the floor, avoiding heat sources, windows and doors.
- The device must be installed in three modules recessed boxes type 503E.
- Two interchangeable faceplates are supplied, white and charcoal gray.
- The white front panel is pre-installed. If you want to change the color, follow the procedure described in the paragraph **FRONT PANEL REPLACEMENT**.
- Wiring diagram must be followed.

TECHNICAL SPECS

Power supply	230 Vac, 50-60 Hz
Relay type	1 changeover dry contact NO/NC
Max relay load	8(5)A - 250VAc
Temperature adjusting range	from +5 to +30°C
Sensor type	NTC - ±1%

INSTALLATION

1. Choose faceplates to use.
2. Choose among the 4 universal supports supplied the one compatible with the plate in possession **(SEE SUPPORT INSTRUCTIONS)** and install the thermostat following the order indicated in Fig.1



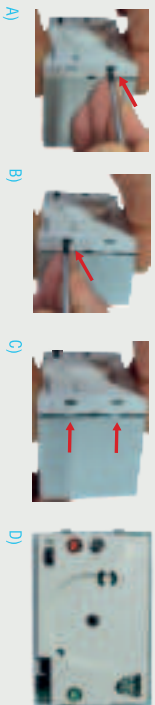
FRONT PANEL REPLACEMENT

The device comes with a factory-installed white faceplate. To replace it with a different color, proceed as follows:

1. Turn the knob on 5°C and make sure the switch is **OFF**.



2. Unhook the front panel so also the knob, from the device by prying with a flat head screwdriver in the two side slots on the right side (Technoswitch logo side) and remove it from the device.



3. Align the right part of the front panel of different color to the side hooks and ejecting pull tab, so press on the left side to fit it. Place the knob indicator at the value 5°C and press on the knob until it beats.



ELECTRICAL CONNECTIONS

Connect 230 Vac mains and the two wires of the heating / cooling system to the screw terminals on the back of the device following the diagrams in Fig. 2A e Fig. 2B

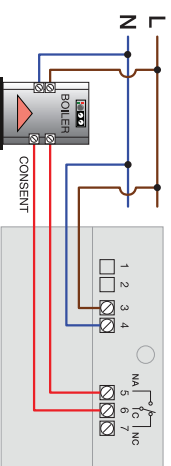


Fig.2A

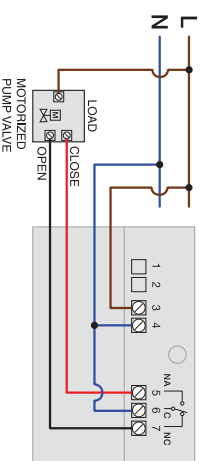


Fig.2B

OPERATION

Thermostat can control heating and cooling systems:

- Placing the switch **SW** to the right ☀, the device works in heating mode.
- Placing the switch **SW** to the left ❄, the device works in cooling mode.
- To turn off thermostat, place the switch **SW** in the center **OFF**.

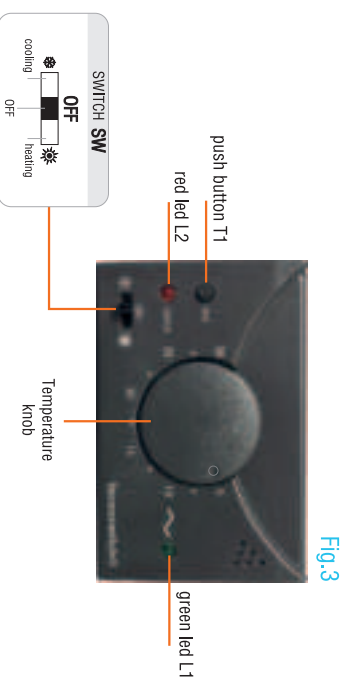
TEMPERATURE SETTING

Use the knob to adjust the desired temperature with a range from 5 to 30°C. When the heating/cooling system is running, the **LED indicator L2 (load)** flashes red every 5 seconds.

MAINS VOLTAGE CONTROL

Press the button **T1 (test)**:

- if the led indicator **(L1)** ~ lights up, thermostat is powered.
- if the led indicator **(L1)** ~ is off, thermostat is not powered. Check the power supply.



tecnoswitch

Pursuant to Legislative Decree No. 49 of March 14, 2014 (Implementation of Directive 2012/19 / EU on waste electrical and electronic equipment (WEEE)), the user must provide the equipment with the essential components at the recycling center for electronic and electrotechnical devices or return it to the dealer when you purchase an equivalent appliance in one to one reason, or 1 to zero for equipment with a label indicating the recycling of the materials that make up the equipment. The illegal disposal of the product by the user involves administrative sanctions as per Legislative Decree No. 49 of March 14, 2014.



REV.10-24

Tecno Switch reserves the right to make changes to its products in each moment and without further notice. Tecno Switch declines all responsibility for damage to things or persons derived from an incorrect or improper use of its products.

For more information consult our website tecnoswitch.com

