

Operation Manual

Hydraulic Pressure Test Pump

51722



Illustration similar, may vary depending on model

Read and follow the operating instructions and safety information before using for the first time.

Technical changes reserved!

Due to further developments, illustrations, functioning steps and technical data can differ insignificantly.

Updating the documentation

If you have suggestions for improvement or have found any irregularities, please contact us.

The information contained in this document may alter at any time without previous notice. It is prohibited to copy or spread any parts of this document in any way without prior written allowance. All rights reserved.

The WilTec Wildanger Technik GmbH cannot be held accountable for any possible mistakes in this operating manual, nor in the diagrams and figures shown.

Even though, the WilTec Wildanger Technik GmbH has undergone biggest possible efforts to ensure that the operating manual is complete, faultless, and up to date, mistakes cannot be entirely avoided.

If you should find a mistake or wish to make a suggestion for improvement, we look forward to hearing from you.

Send an e-mail to:

service@wiltec.info

or use our contact form:

<https://www.wiltec.de/contacts/>

The most recent version of this manual in various languages can be found in our online shop via:

<https://www.wiltec.de/docsearch>

Our postal address is:

WilTec Wildanger Technik GmbH
Königsbenden 12
52249 Eschweiler
Germany

Do you wish to pick goods up? Our pick-up address is:

WilTec Wildanger Technik GmbH
Königsbenden 28
52249 Eschweiler
Germany

To shorten the waiting time and allow for a rapid on-site transaction, we ask you to call us previously or placing your order via the webshop.

E-mail: service@wiltec.info

Tel: +49 2403 55592-0

Fax: +49 2403 55592-15

To return orders for exchange, repair, or other purposes, please use the following address. Attention! To allow for a smooth execution of your complaint or return, it is important to contact our customer service team before returning the goods.

Returns Department
WilTec Wildanger Technik GmbH
Königsbenden 28
52249 Eschweiler

E-mail: **service@wiltec.info**

Tel: +49 2403 55592-0

Fax: +49 2403 55592-15

Introduction

Thank you for purchasing this quality product. **To minimise the risk of injury we urge that our clients take some basic safety precautions when using this device. Please read the operation instructions carefully and make sure you have understood its content.**

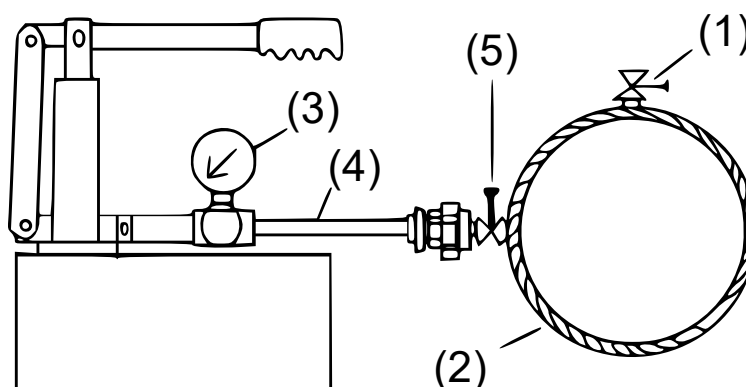
Keep these operation instructions safe.

Technical data

Maximum pressure (bar)	25
Stroke (mm)	35
Rate of water suction per stroke (ml)	13
Water tank capacity (l)	5
Weight (kg)	2
Dimensions (mm)	305 × 185 × 110
Accessories	1 × pressure hose
	1 × ½" hose bushing

Testing procedure

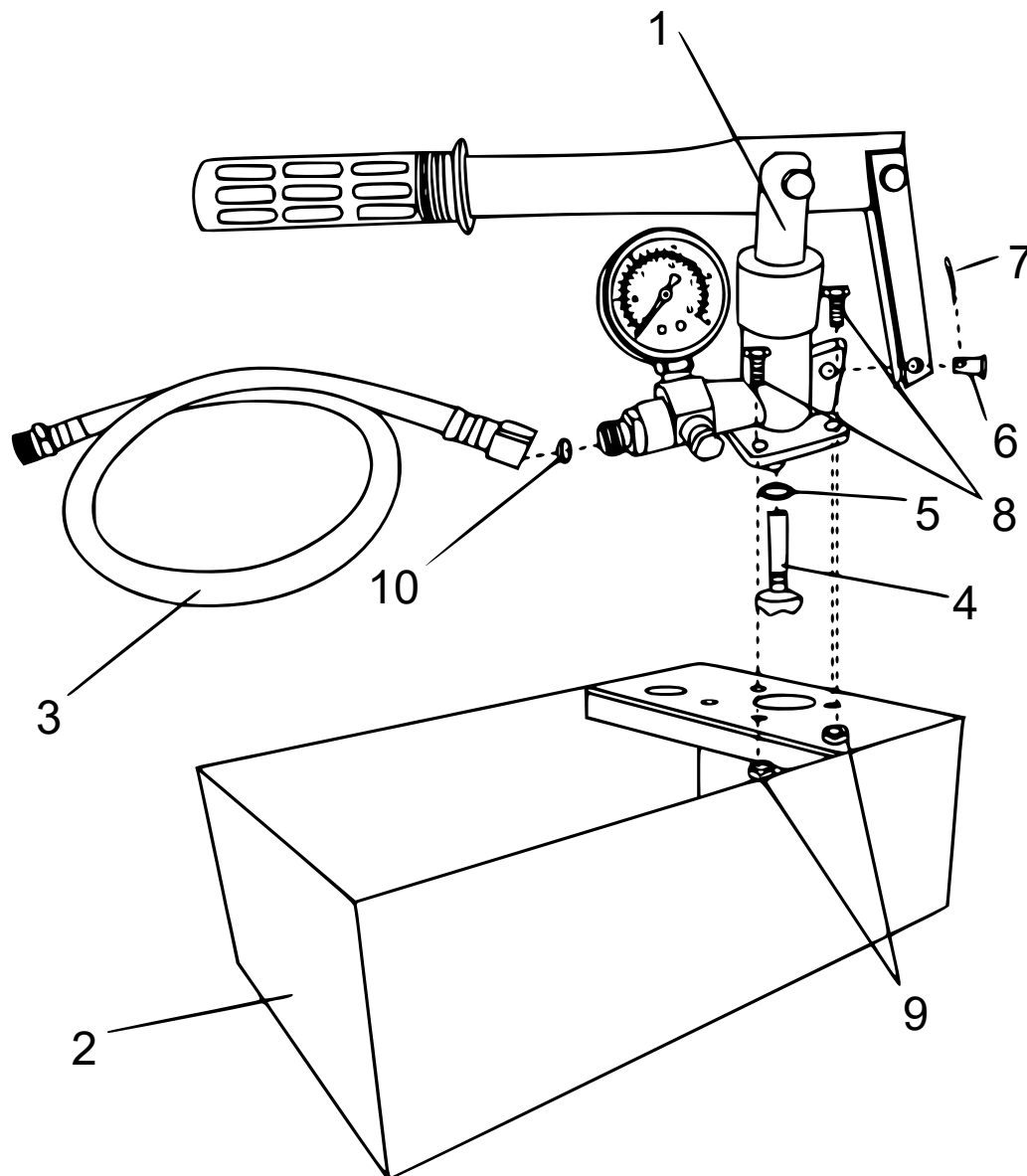
1. Install the stop valves **(5 and 1)** to the test pipe **(2)**.
2. Fill up the test pipe with water.
3. When the test pipe is filled with water, remove the air and re-close the valve 2 **(1)**.
4. Connect the tester and the test pipe with the attached pressure-resistant hose assembly.
5. Fill the tester water tank with water and operate the pump.
6. Open the stop valve 1 **(5)** of the test pipe and continue the operation to fill up with water.
7. When the pressure gauge equipped to the tester rises to the required pressure, stop operating the pump.
8. If the pressure does not drop, the test pipe is close.
9. If the pressure does drop, there is a leakage somewhere on the test pipe.



No	Name	No	Name
1	Stop valve 2 (air vent)*	4	Pressure-resistant hose
2	Test pipe	5	Stop valve 1*
3	Pressure gauge		

* Stop valves 1 and 2 are not included in accessories.

Explosion view and parts list



Nº	Name	Nº	Name
1	Press handle with manometer	6	Support pin
2	Water tank	7	R snap
3	Hose with connector	8	Bolt
4	Strainer	9	Screw nut
5	O ring	10	Sealing ring

Important notice:

The reprint or reproduction, even of excerpts, and any commercial use, even in part, of this instruction manual require the written permission of WilTec Wildanger Technik GmbH.