

## PRODUCT FEATURES:

- Retains factory features in select Chrysler, Dodge and Jeep vehicles while functioning with an aftermarket radio.
- Retains Steering Wheel Controls via built-in, pre-programmed interface.
- Supports amplified and non-amplified systems.
- Provides reverse trigger for rear view camera.
- EIA color coded wiring for easy installation.

## NOTES:

1. The Front and Rear fading are NON-Adjustable on amplified systems.
2. Also supports radio replacement in vehicles with 4.3" and 8.4" color screens.
3. Does not retain Uconnect.
4. If vehicle is not equipped with Steering Wheel Controls use part# SOOCR-26

## PARTS INCLUDED:



CS-CR41 MODULE



1st Gen Harness



2nd Gen Harness



Audio Filter

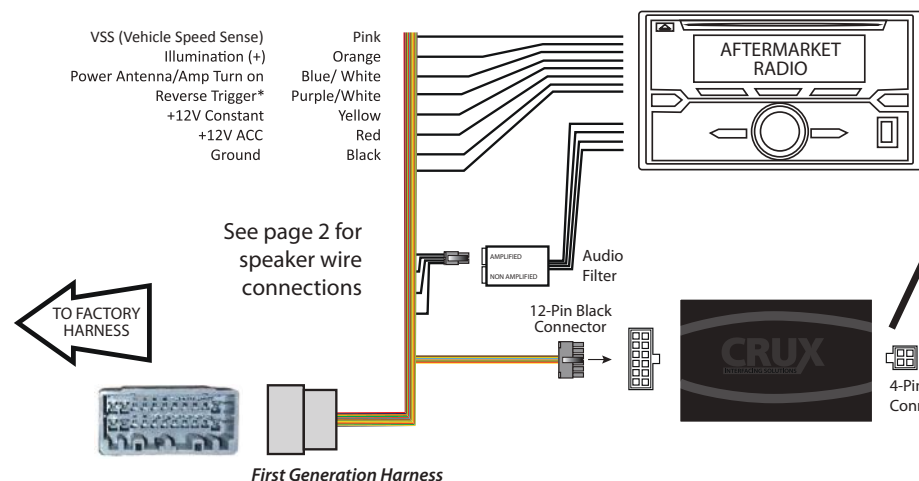


SWC Cables

## INSTALLATION DIAGRAM:

The CS-CR41 includes 2 harnesses for older and new model vehicles. Only 1 of the harness connectors will match the plug in your vehicle. See Installation diagrams below for each harness.

### 1st Generation Harness



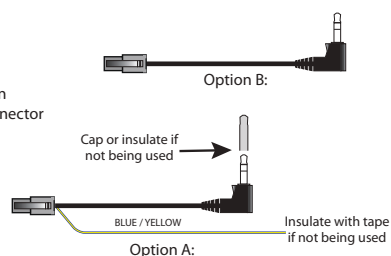
\*Does not supply Reverse Trigger on Manual Transmissions. Reverse trigger wire from the aftermarket radio and/or camera power must be connected to factory reverse light wire instead.

### TROUBLESHOOTING

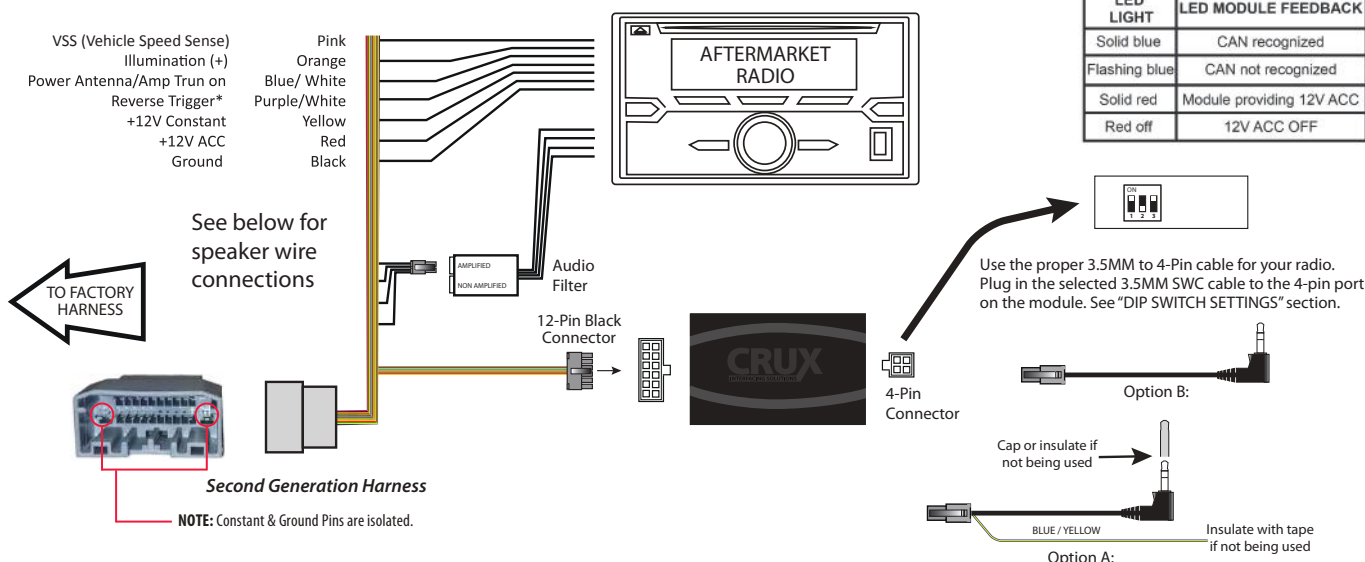
LED LIGHT	LED MODULE FEEDBACK
Solid blue	CAN recognized
Flashing blue	CAN not recognized
Solid red	Module providing 12V ACC
Red off	12V ACC OFF

### 3.5MM SWC CABLES (Option A or B)

Use the proper 3.5MM to 4-Pin cable for your radio. Plug in the selected 3.5MM SWC cable to the 4-pin port on the module. See "DIP SWITCH SETTINGS" section.



## 2nd Generation Harness



## TROUBLESHOOTING

LED LIGHT	LED MODULE FEEDBACK
Solid blue	CAN recognized
Flashing blue	CAN not recognized
Solid red	Module providing 12V ACC
Red off	12V ACC OFF

\*Does not supply Reverse Trigger on Manual Transmissions. Reverse trigger wire from the aftermarket radio and/or camera power must be connected to factory reverse light wire instead.

## Speaker wire connections:

Wire the audio filter using the connection chart below. Plug the 4 pin Molex plug found on the 1st and 2nd generation harnesses to the corresponding 4 pin Molex socket on the audio filter. (Amplified or Non-Amplified)

NON AMPLIFIED SYSTEMS		AMPLIFIED SYSTEMS	
Plug the 4-pin Molex connector to the NON-AMPLIFIED side of the inline filter.		Plug the 4-pin Molex connector to the AMPLIFIED side of the inline filter.	
Wire Connections:		Wire Connections:	
Aftermarket Radio	CS-CR41 Harness	Aftermarket Radio	CS-CR41 Harness
White	White	White	Green
White/Black	White/Black	White/Black	Green/Black
Gray	Gray	Gray	Purple
Gray/Black	Gray/Black	Gray/Black	Purple/Black
Green	Green	Green	Not Used
Green/Black	Green/Black	Green/Black	Not Used
Purple	Purple	Purple	Not Used
Purple/Black	Purple/Black	Purple/Black	Not Used

**Amplified vehicle troubleshooting:** Bluetooth may be inaudible when installing select aftermarket radios. Therefore hook the rear CS-CR41 speakers to the aftermarket radio front speakers.



### AFTERMARKET RADIO DIP SWITCH SETTINGS:

SWC MODULE  
DIP SWITCH

## 4-PIN SWC CABLE

OPTION A is used for ALPINE, CLARION, JVC, and KENWOOD units (Blue/Yellow wire is attached)  
OPTION B is used for ATOTO, BLAUPUNKT, BOSS, DUAL, FARENHEIT, JENSEN, POWER ACOUSTIK,  
PIONEER, SONY, SOUNDSTREAM and Most Off-Brand Radios.

For aftermarket radios that have wires instead of a 3.5mm plug for SWC connection, cut off the 3.5mm plug on the Crux SWC Cable (option B) and connect the SWC wires as follows:

Note that there are some radios that only have SWC1 and SWC2, in this case “shield” does not need to be connected.



RED to SWC Key 1  
WHITE to SWC Key 2  
SHIELD to SWC Ground

**CHRYSLER**

2011-2014	200
2005-2010	300
2007-2009	Aspen
2006-2010	PT Cruiser
2007-2010	Sebring
2008-2016	Town & Country

## DODGE

2007-2014	Avenger
2006-2012	Caliber
2008-2014	Challenger
2006-2010	Charger
2013	Charger
2006-2011	Dakota
2004-2013	Durango
2009-2016	Grand Caravan
2009-2010	Journey
2013	Journey
2005-2008	Magnum
2007-2011	Nitro
2006-2012	RAM

**JEEP**

2006-2010	Commander
2007-2016	Compass
2005-2013	Grand Cherokee
2008-2012	Liberty
2007-2017	Patriot
2007-2017	Wrangler

**MITSUBISHI**

2006-2009	Raider
-----------	--------

**VOLKSWAGEN**

2009-2013 Routan