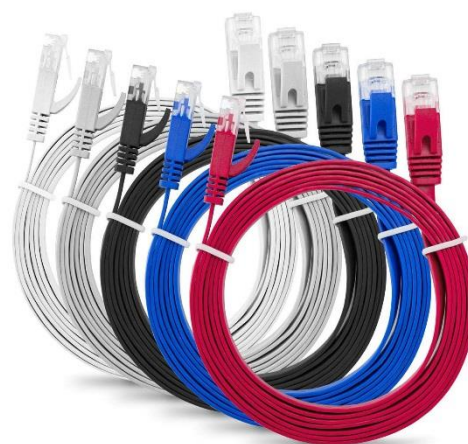




Access King BVBA
Diamantstraat 8, # 243
Herentals, B-2200
Belgie
BE0847621533
Phone: +323 500 27 20
E-mail: info@accessfox.com

User Manual for MutecPower SLIM FLAT Cat6 RJ45 Ethernet Network Patch Lan Cable

Congratulations on your purchase of MutecPower's SLIM FLAT Cat6 RJ45 Ethernet Network Patch Lan Cable. This user manual is designed to help you maximize the performance of your new network cable. Please read through the following instructions carefully before using your cable.



Product Overview:

- High-performance Cat6 CCA patch cable with cross OD 2.0*6.0mm.
- Comes in packs of 5 or 10, in black, white, grey, blue and red colors.
- Ultra-flat design to avoid tangled cords and save space.
- Gold-plated contacts and snagless molds resist corrosion.
- Full metal shielding within connectors for durability and interference protection.
- ROHS approved.

Product Features:

- Category 6 rated gigabit Ethernet performance, and 250 MHz bandwidth capacity.
- Future-proof your network for 10-Gigabit Ethernet with backward compatibility to lower cabling 10/100/1000 Ethernet.
- Connects all the hardware destinations on a Gigabit Local Area Network (LAN), such as PCs, computer servers, printers, routers, switch boxes, network media players, NAS, VoIP and IP video phones, PoE devices, and more.
- Guarantees high-speed data transfer for server applications, cloud storage, video chatting, online high definition video streaming, and online gaming.

Installation Instructions:

1. Make sure the device you are connecting the cable to is turned off.

2. Identify the devices you want to connect using the cable and locate the Ethernet ports on each device.
3. Connect one end of the cable to the Ethernet port on one device.
4. Connect the other end of the cable to the Ethernet port on the other device.
5. Turn on both devices and ensure that they recognize each other as connected.

Maintenance and Storage:

- Avoid bending the cable beyond its minimum bend radius, which is approximately 1 inch.
- Keep the cable away from sharp edges or surfaces that can damage the cable.
- Avoid exposing the cable to extreme temperatures, direct sunlight, or water.
- When not in use, store the cable in a cool and dry place, away from direct sunlight.

Package Contents:

- SLIM FLAT Cat6 RJ45 Ethernet Network Patch Lan Cable
- 15 Cable ties

Conclusion:

MutecPower's SLIM FLAT Cat6 RJ45 Ethernet Network Patch Lan Cable is a high-quality cable that is designed to deliver reliable and high-speed connectivity. Its flat design saves space and helps avoid tangled cords. Its gold-plated contacts and snagless molds resist corrosion and ensure safe and secure connections.

Please follow the installation and maintenance instructions outlined in this user manual to ensure maximum performance and longevity of your cable.

If you have any questions or concerns, please contact our customer service team for assistance.