

ARCADE FIGHTSTICK

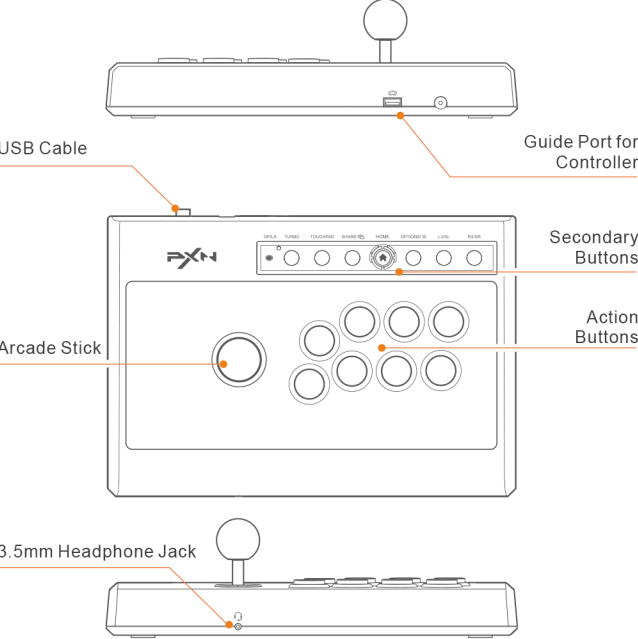
User Manual

Thank you for choosing and supporting PXN, please read this manual carefully before starting to enjoy your gaming experience.

01 System Requirements

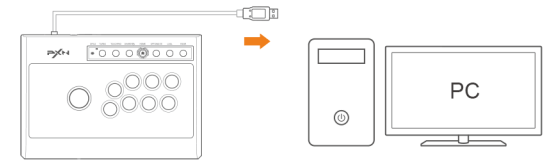
Compatible Platforms	PC, PS3, PS4, X-ONE/SERIES, SWITCH, Android
System Requirement on PC	Windows 7 / 8 / 10 / 11
System Requirement on Android	Android 4.4+

02 Product Overview



03 Using on PC

- Step 1 Plug the USB cable of the arcade stick into the computer, and the channel light " " will remain on.
- Step 2 When connecting to the computer for the first time, it will prompt to find new hardware and automatically complete the driver installation.
- Step 3 Open the game controller settings on your computer to perform a functionality self-test. Here are the specific steps:
Win7 or above systems: Open the Control Panel → Device and Printer → Right-click on the Gamepad icon → Game Controller Setting, click the Properties Testing.



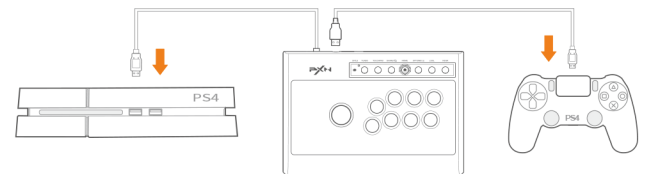
Connection Diagram with PC

04 Using on PS3

- Step 1 Plug the USB cable of the arcade stick into PS3, then power on the PS3 console.
- Step 2 The console will automatically assign a channel to the arcade stick when connection is successful, and the corresponding channel light will remain on.

05 Using on PS4

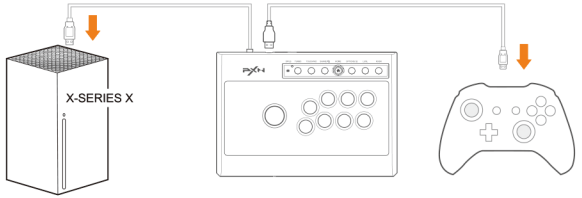
- Step 1 Turn off the original PS4 controller and connect it to the arcade stick's controller interface using the USB data cable.
- Step 2 Plug the main USB cable of the arcade stick into the PS4 console and turn on the console.
- Step 3 Press the " " button on the arcade stick once. The " " channel light on the arcade stick will stay on to indicate a successful connection.



Connection Diagram with PS4

06 Using on X-ONE/SERIES

- Step 1 Turn off the original X-ONE/SERIES controller and connect it to the arcade stick's controller interface using the USB data cable.
- Step 2 Plug the main USB cable of the arcade stick into the X-ONE/SERIES console and turn on the console.
- Step 3 The " " channel light on the arcade stick will stay on to indicate a successful connection.



Connection Diagram with X-SERIES X

07 Using on SWITCH

Enter homepage of SWITCH, select Setting → Controllers and sensors → select Pro Controller Wired Connection. Please make sure that the option state is ON.

• Connect with SWITCH Console

- Step 1 To connect the arcade stick with SWITCH console, you will need an OTG adapter. Connect the stick's USB main cable to the Type-C OTG adapter and insert it into the SWITCH console.
- Step 2 Once the connection is successful, the " " channel light on the arcade stick will remain on.

(* Note: The Type-C OTG is not included)

• Connect with SWITCH Dock

- Step 1 Place the SWITCH console into the dock to ensure successful connection.
- Step 2 Plug the main USB cable of the arcade stick into the SWITCH dock and turn on the console.
- Step 3 The console will automatically assign a channel to the arcade stick when connection is successful, and the corresponding channel light will remain on.

* Note (on the SWITCH platform):

Press "SHARE" and "OPTIONS" buttons simultaneously to activate the screenshot function. Press the "TOUCHPAD" button to activate the screenshot function.

08 Using on the Android (requires Android 4.4 or above)

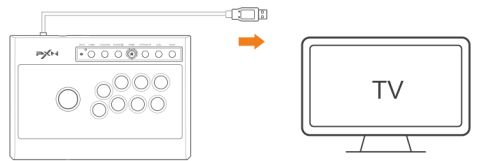
• Connect the arcade stick to an Android smartphone

- Connect the arcade stick to your smartphone using an OTG cable to use it.
- (* Note: Please ensure that the OTG function is enabled in your phone settings, and you will need to purchase an OTG adapter.)



• Connect the arcade stick to an Android TV

- Plug the main USB cable of the arcade stick into Android TV to use it.
- (* Note: Due to system customization on certain Android TV models, some of them may not support the connection of external devices.)



Connection Diagram with Android TV

09 Switch the Joystick Mode

- When you switch the joystick to the " DP " position, the directional joystick functions as a " D-pad " on various gaming consoles.
- When you switch the joystick to the " LS " position, the directional joystick functions as the " left stick " on various gaming consoles.

10 TURBO Function Setting

• TURBO Function Setting (Auto-Fire)

- The buttons that can have the TURBO function enabled are: A, B, X, Y, LB, RB, LT, and RT.
- To set the TURBO function: Simultaneously hold down the TURBO button + the button you want to enable TURBO for. The LED will flash.
- To clear the TURBO setting: Simultaneously hold down the TURBO button + the button that has the TURBO function enabled. The LED will change from flashing to off.

11 Audio Function

Interactive communication function is available on PS4 and X-ONE/SERIES platform.

12 Troubleshooting

- If the backlight of arcade stick is on but it is not functioning when connected to the console, please try unplugging it, or check if the controller is functioning properly.
- If the arcade stick is unresponsive and the console screen is frozen, it is possible that the console has experienced a sudden crash. Please restart the console and reconnect the arcade stick.
- If the arcade stick is not responding correctly during gameplay, try disconnecting and reconnecting the arcade stick. This can help refresh the connection and resolve any temporary issues.
- When connecting the arcade stick, make sure to turn off the console to prevent automatic connection between the arcade stick and the console, which may interfere with the proper initialization process.

13 Attentions

- Avoid allowing water or other liquids to enter the internal components of the product to prevent damage.
- Avoid storing the product in humid, high-temperature, or oily environments.
- When connecting and disconnecting devices, apply moderate force and avoid excessive pressure.
- Children should use this product under the supervision of adults.

14 Product Specifications

Product Model	PXN-008
Connection Method	Wired connection
Working Current	Under normal conditions: 40mA With a controller: Below 500mA
Package Size	About 347 * 255 * 105 mm
Product Size	About 335 * 230 * 97 mm
Product Weight	About 1252 g
Operating Temperature	0 - 40 °C
Operating Humidity	20 ~ 80 %