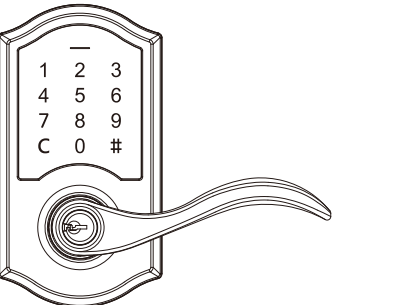


DEFIANT®

INSTALLATION GUIDE



FOR QUICK &
EASY ASSEMBLY
FIND 3D INSTRUCTIONS
FOR THIS PRODUCT IN



Questions, problems, missing parts?
Before returning to the store, call Defiant Customer Service
TOLL FREE HELP LINE 1-877-ONE-LOCK
HOMEDEPOT.COM
08:30 a.m.-05:30 p.m., EST, Monday - Friday

G32-KPLA812A
Rev. 20/08-00



Contents in this package are **NOT** interchangeable with other units.
Please contact customer service for more information.

WARRANTY

LIMITED LIFETIME MECHANICAL AND 1 YEAR ELECTRONIC WARRANTY

The retailer of this product, hereby warrants, subject to the conditions set forth below, that it will either repair or replace, at its option, this product if it proves to be defective by reason of improper workmanship or materials within the original purchaser's limited time. In order to obtain repairs or replacement under this limited warranty you must bring this product to the retailer's store in which you bought it.

Original purchaser: This limited warranty is limited to the original purchaser at retail of this product from retailer.

Except to the extent prohibited by applicable law, no other warranties, whether express or implied, including the warranties of merchantability and fitness for a particular purpose, shall apply to this product. Under no circumstances shall retailer be liable for consequential or incidental damages in connection with this product. To the extent retailer is prohibited by applicable law from excluding implied warranties, the duration of such implied warranties which are not excludable shall be the original purchaser's lifetime. Some states do not allow the limitation on how long an implied warranty lasts, so the above limitation on the duration of implied warranties which are not excludable, if any, may not apply to you. Some states do not allow the exclusion or limitation of incidental or consequential damages, so the above limitation or exclusion of incidental or consequential damages may not apply to you. Retailer neither assumes nor authorizes any representative or other person to assume for it any obligation or liability other than such as is expressly set forth herein. This limited warranty gives you specific legal rights, and you may also have other rights which vary from state to state.

IMPORTANT NOTICE

Please Read This Notice before Installing, Using, and Servicing the Product

The product is designed and manufactured for providing security. Please read carefully and follow the instructions given below. Lack of proper working knowledge or improper use could cause unexpected damage or loss to personal or commercial belongings.

Installation

- Please contact your local service provider prior to the installation as your door preparation may be different from the standard the product conforms to.
- Please perform the bolt direction determination **immediately after** the product is successfully mounted to the door. You may refer to **Page 10** for more details.
- Please change the master code (programming code) to prevent unauthorized individuals from gaining access.
- Any removal or replacement of parts in installation is NOT recommended and may invalidate the warranty of the product.
- Not to be used on an Emergency Exit.

Product Use

- **ALWAYS use authentic alkaline batteries.** It is the user's responsibility for damage caused by using unauthentic batteries.
- The product is made of mechanical and electronic components, which may be sensitive towards water, physical impact, and electric shock. Using the product with care prevents unexpected malfunction and optimizes the product life span.
- **DO NOT** disassemble the product without advice from qualified service provider. Unauthorized disassembly will void the product warranty.
- Please refer to TROUBLESHOOTING page if any problem occurs, or contact your local service provider for professional instructions.
- Remove all batteries from the lock at the same time and replace them with new batteries of the same size and type.
- Preserve battery and lock life by removing the batteries when the lock is not being used for more than 3 months.

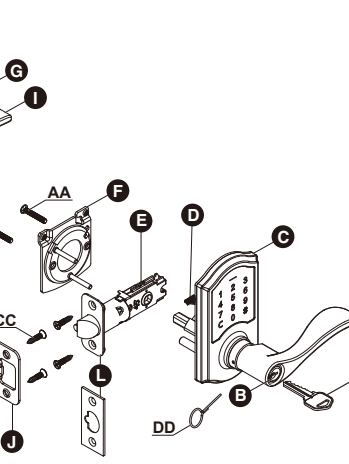
Service and Maintenance

- **ALWAYS** refer to user's manual or seek advice from your local service provider on cleaning, moving, or maintaining the product.

The information in this notice is subject to change without notice.

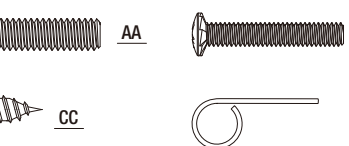
Package Contents List

Part	Description	Quantity
A	Key	2
B	Cylinder	1
C	Exterior Assembly	1
D	Power Cable	1
E	Latch	1
F	Mounting Plate	1
G	Interior Assembly	1
H	Battery Cover	1
I	Lever	1
J	Strike Plate	1
K	Dust Box	1
L	Drive-in Collar(Optional)	1



Hardware Contents (Actual Size)

Part	Description	Quantity
AA	1-1/16"(27mm) Mounting Bolt	2
BB	13/16"(20.3mm) Screw	2
CC	3/4" (19 mm) Wood Screw	4
DD	Catch tool	1



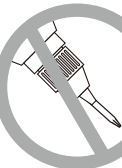
Safety Information



NOTE:
Before beginning installation of product, make sure all parts are present. If any part is missing or damaged, do not attempt to assemble, install or operate the product. Call the Customer Service Team or visit www.homedepot.com.



Do not use electric drill or electric screwdriver to tighten screws.



Read the precautions and instructions in this manual before installing and using this lock. Save this manual for future reference.

- A. Do not attempt to disassemble any internal components of the lockset. Doing so will void the limited warranty.
- B. Do not drop or hit the lockset. Too much shock may result in permanent damage.
- C. Do not use pins or sharp objects to press the keypad.
- D. Always create a backup of information you wish to keep (Master Code, User Codes, etc.)
- E. Promptly change the Master Code before operating this lockset.
- F. Restrict access to your lock's interior assembly and routinely check your settings to ensure they have not been altered without your knowledge.



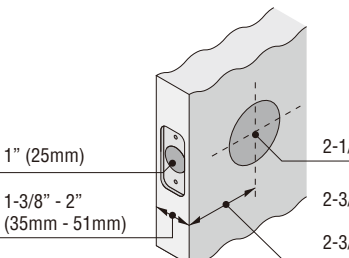
CARE and MAINTENANCE:
The following instructions should be followed to properly protect and maintain your lockset:

- A. Remove locks, or do not install locks, prior to painting your door.
- B. Periodically clean with mild soap and a soft cloth only.
- C. Do not use any abrasives or chemical products containing alcohol, benzene, acids, and avoid using sharp or abrasive objects to clean this lockset.
- D. Do not allow any water or liquids into the lockset during installation.

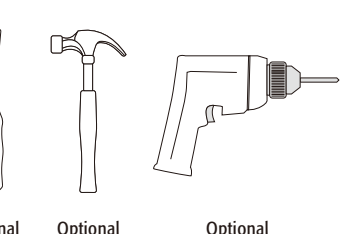
01

Before Proceeding

Check Dimensions



Tools Required



02

03

04

05

06

07

08

09

10

11

12

13

14

15

16

17

18

19

Step 1: Door Drilling For New Installation

1

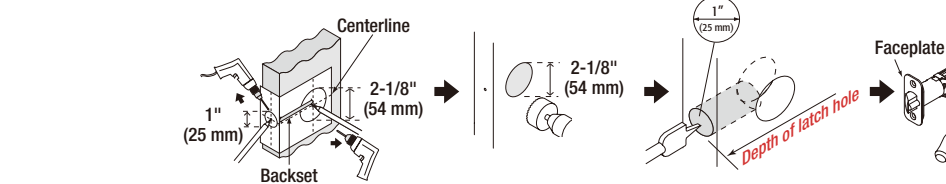
Cut out TEMPLATE and use to mark the door, drill holes, and chisel out the mortise.



NOTE:
If your door already has holes, skip to **Step 2**

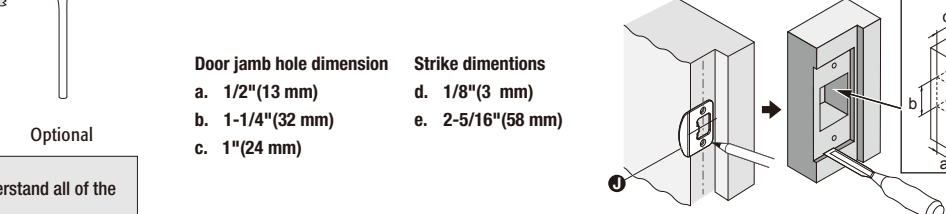


Drill from both sides of the door to prevent wood splitting.



2

Prepare the door jamb – use the strike plate as a template to drill the latch and screw holes and chisel out the mortise. The strike plate must fit flush with the surface of the door jamb.



01

02

03

04

05

06

07

08

09

10

11

12

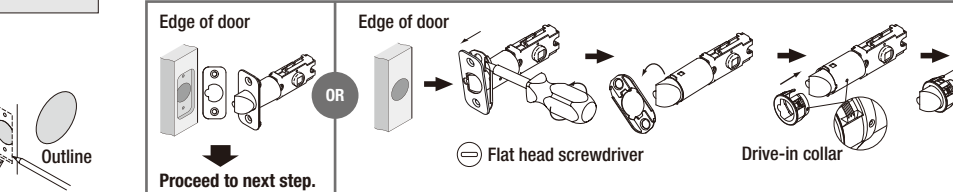
13

14

Step 2: Install the latch and strike

1

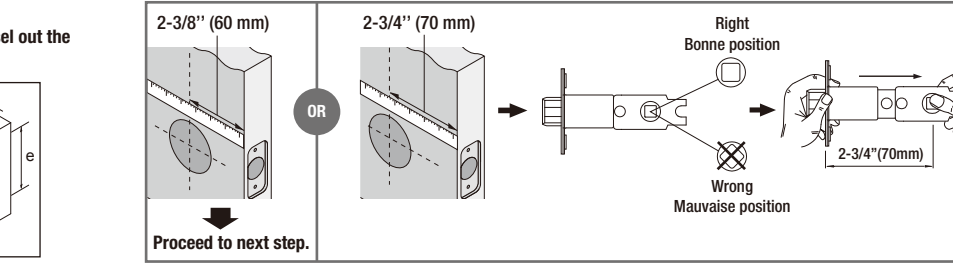
Choose faceplate



2

Set the latch backset

Your latch is set for 2-3/8" backset. It can be adjusted if needed to 2-3/4" (skip this if your door has a 2-3/8" backset).



01

02

03

04

05

06

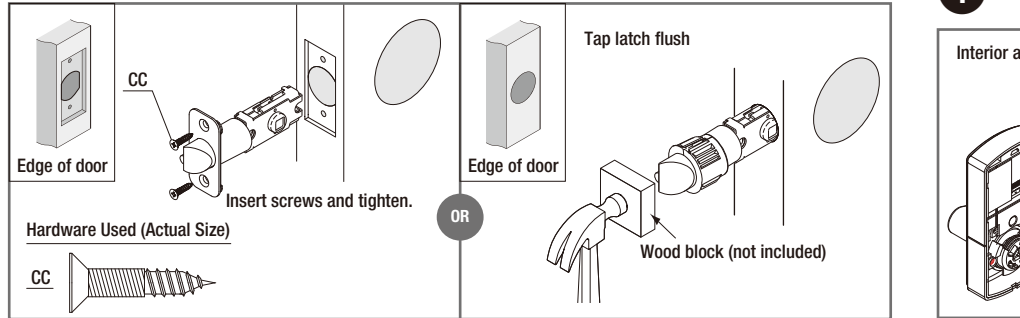
07

08

3 Install the latch

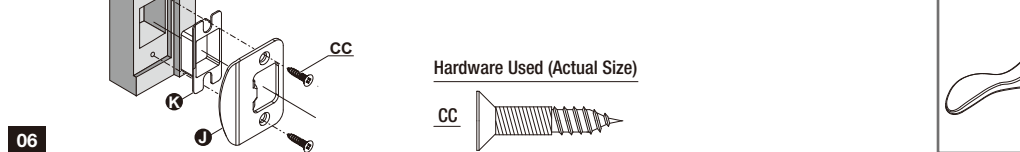


You must use the latch that was provided in the packaging.



4 Install strike plate in door jamb

NOTE: Check the strike plate to make sure it is properly aligned and clear so the bolt can freely move in the hole.

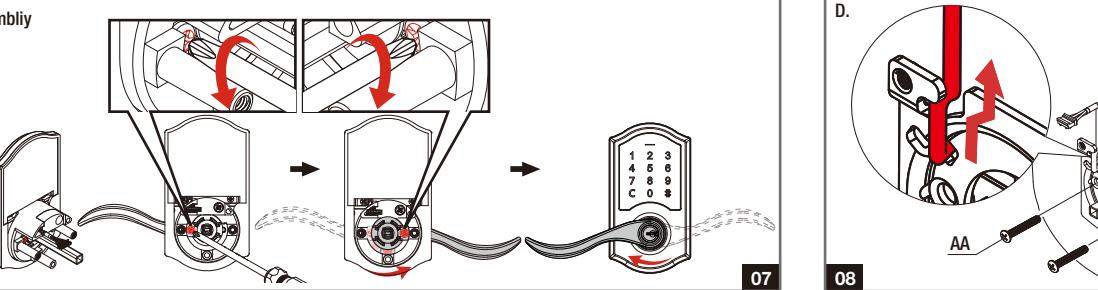
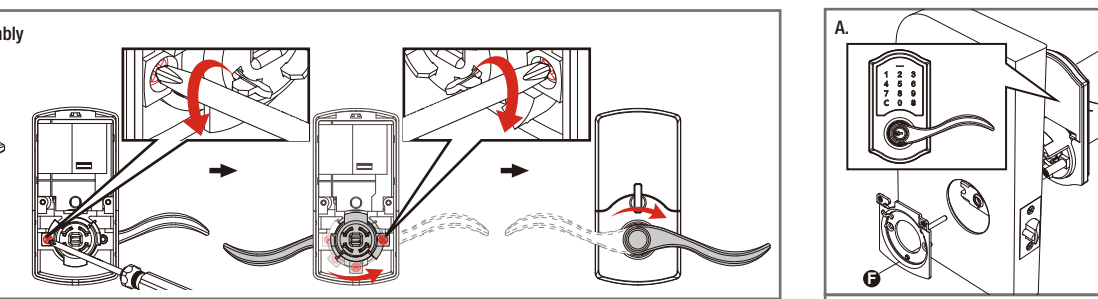


Step 3: INSTALLING THE EXTERIOR LOCK ASSEMBLY

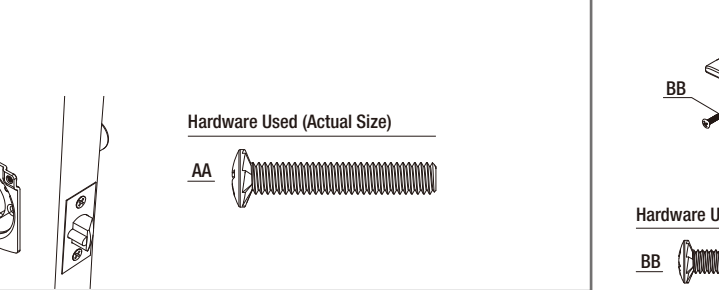
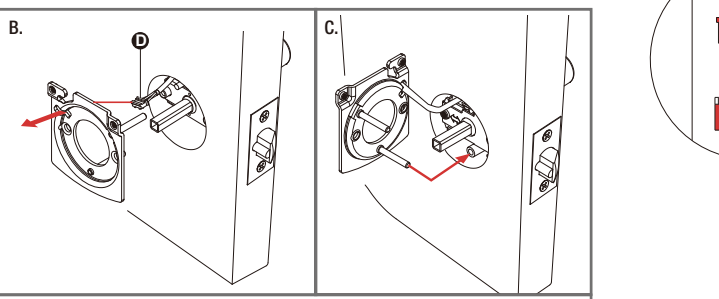
1 Choose handle direction



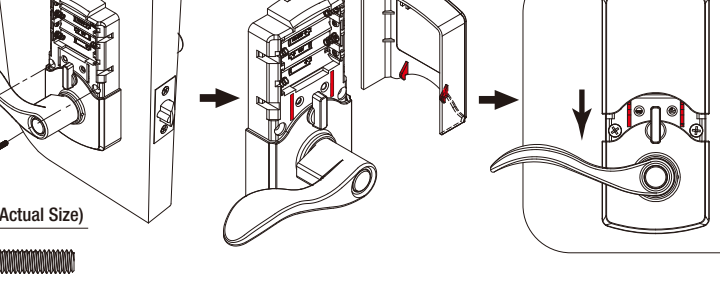
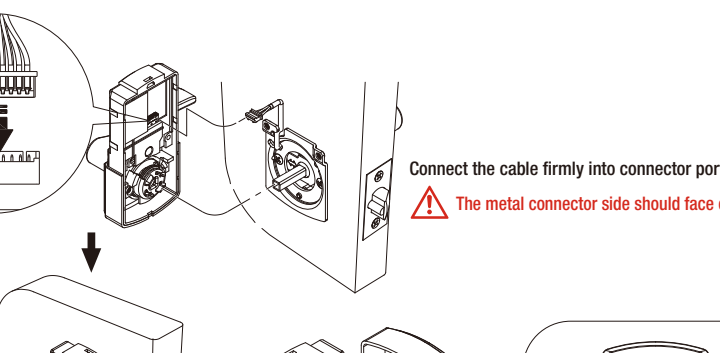
Set the lock to auto-lock mode, then remove batteries before changing handle direction.



2 Fasten the mounting plate to door

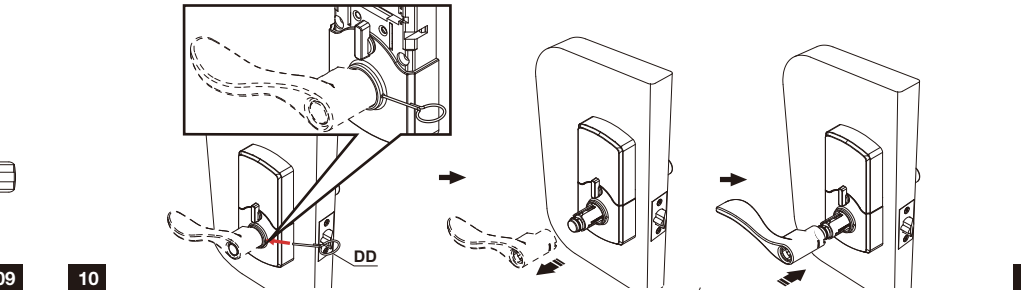
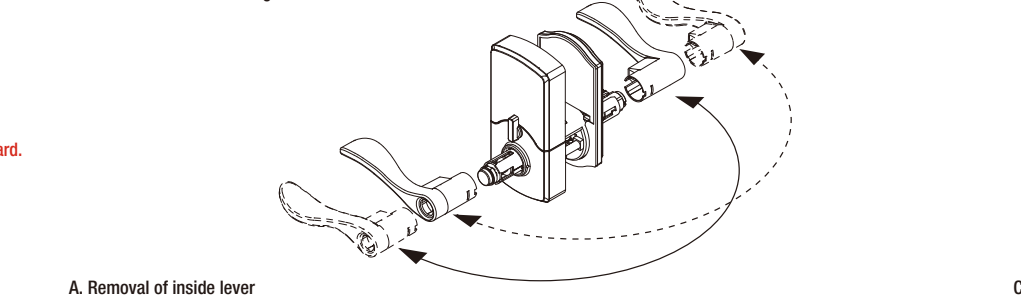


3 Connect the cable firmly into connector port

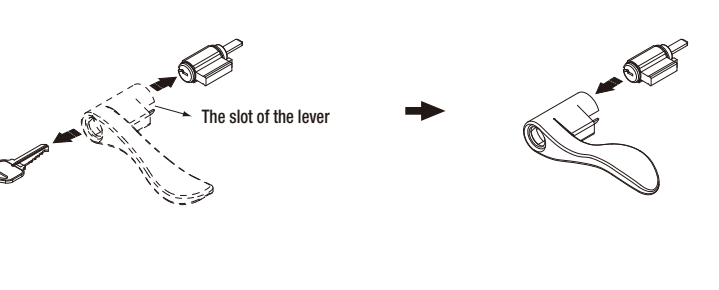
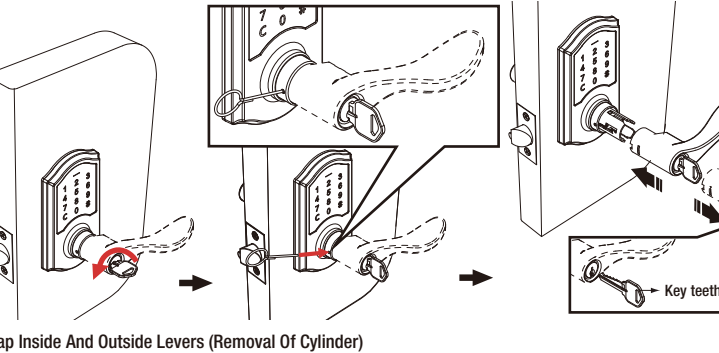


4 SWITCH LEVERS (OPTIONAL)

If your product comes with asymmetrical levers, you have the option to switch the interior lever with the exterior to have levers rotated 180 degrees.

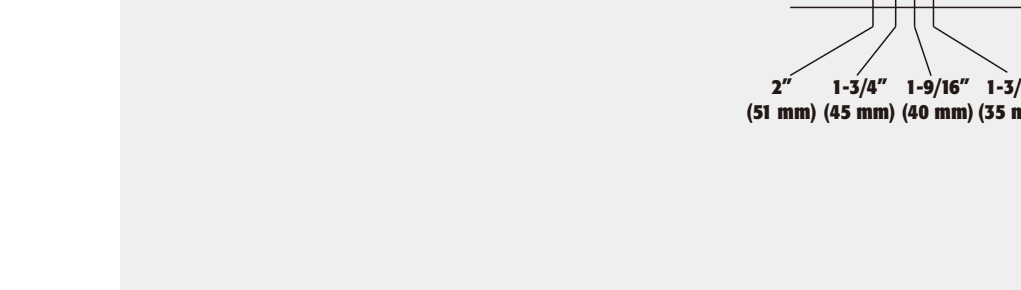
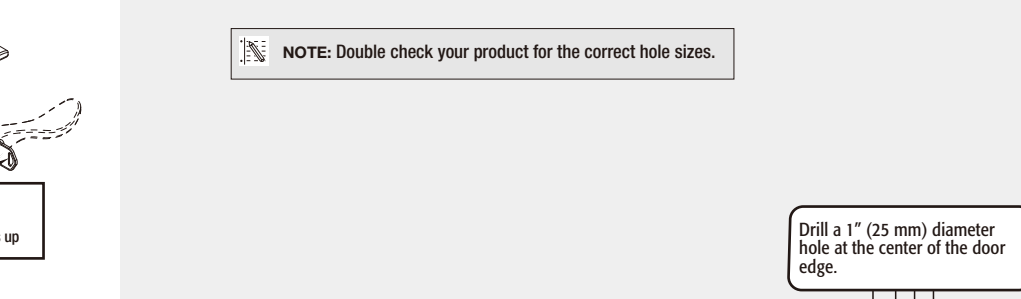


3 Connect the cable firmly into connector port

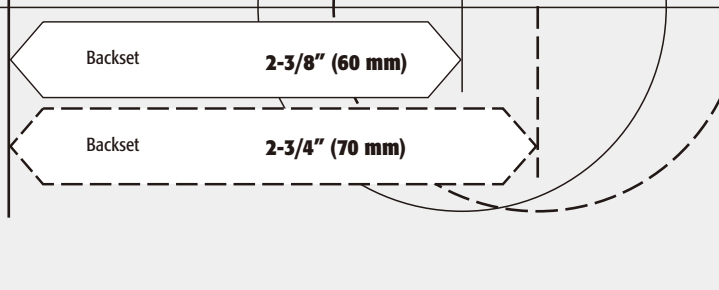
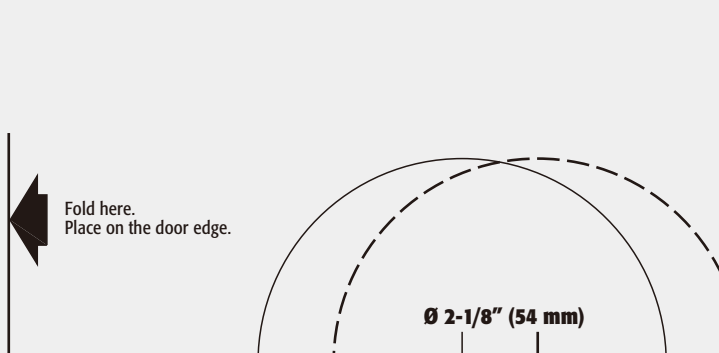


4 SWITCH LEVERS (OPTIONAL)

If your product comes with asymmetrical levers, you have the option to switch the interior lever with the exterior to have levers rotated 180 degrees.

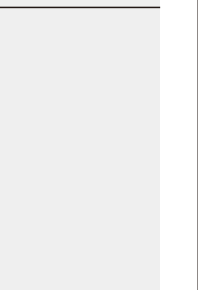
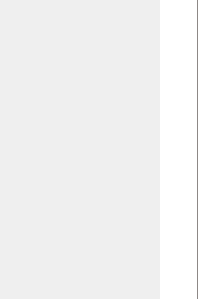


3 Connect the cable firmly into connector port



4 SWITCH LEVERS (OPTIONAL)

If your product comes with asymmetrical levers, you have the option to switch the interior lever with the exterior to have levers rotated 180 degrees.



TEMPLATE

NOTE: Double check your product for the correct hole sizes.

