

SERVICE MANUAL
for
Minor Repairs
of the
Kodak EasyShare M530 DIGITAL CAMERA
Service Code: 9814
Kodak EasyShare MD30 DIGITAL CAMERA
Service Code: 9688



Important

Qualified service personnel must repair this equipment.



Confidential
Restricted Information

PLEASE NOTE The information contained herein is based on the experience and knowledge relating to the subject matter gained by Eastman Kodak Company prior to publication.

No patent license is granted by this information.

Eastman Kodak Company reserves the right to change this information without notice, and makes no warranty, express or implied, with respect to this information. Kodak shall not be liable for any loss or damage, including consequential or special damages, resulting from any use of this information, even if loss or damage is caused by Kodak's negligence or other fault.



This equipment includes parts and assemblies sensitive to damage from electrostatic discharge. Use caution to prevent damage during all service procedures.

Table of Contents


Description	Page
Illustrated Parts List	4
Necessary Materials	4
Serial Numbers	4
Visual Index	5
Equipment Parts	6
COVER and DOOR AYs	6
LCD, BOARD, FRAME and LENS AYs	8
Alphabetical Index	10
Diagnostics	11
Error Codes	11
E00	11
E12	11
E14	11
E15	11
E20	11
E22	12
E25	12
E41	12
E81	12
Troubleshooting	13
LCD	13
FLASH	13
MEMORY CARD	14
Power	14
Image Quality	15
Communication	15
General Functions	15
Checkout Procedures	16
Checking the General Functions of the CAMERA	16
Checking the BATTERY Receiving a Charge	16
Checking the Energizing Sequence	16
Checking the BUTTONS and SWITCHES	17
Checking the ACTUATION, FLASH, and POWER-ON COUNTERS	20
Checking the Communication	21
Checking the Accessories	21
Checking the External Components of the CAMERA	21
Additional Service Procedures	22
Using the "HIDDEN MENU" of the CAMERA	22
Displaying the "HIDDEN MENU"	22

Checking for the Firmware Version and the Type of LCD	22
Upgrading the Boot Code of the CAMERA	23
Upgrading the Firmware Using the MEMORY CARD	24
Publication History	25

Section 1: Illustrated Parts List

Necessary Materials

Special Tools

Description	Part No.
<i>Kodak</i> Li-Ion RECHARGEABLE DIGITAL CAMERA BATTERY KLIC-7006	Region Provided
<i>Kodak</i> CAMERA USB CABLE, Micro B / 5-pin	891 3907
<i>Kodak</i> USB AC ADAPTER	808 5003 or 166 2923
<i>Kodak</i> AV CABLE, Model AV-5 / 5-pin	894 4837
COLOR MONITOR or TELEVISION with audio and video 2mm inputs	Region Provided
SD, MMC or SDHC MEMORY CARDS	Region Provided
Firmware "KM530.fw"	*
 Note If new firmware is released, the upgrade version is on the Kodak.com Web Site.	
<i>Kodak EasyShare</i> SOFTWARE, Version 5.0.2, 5.1, or 5.2	Region Provided

* This file is on the Kodak Partner Site.

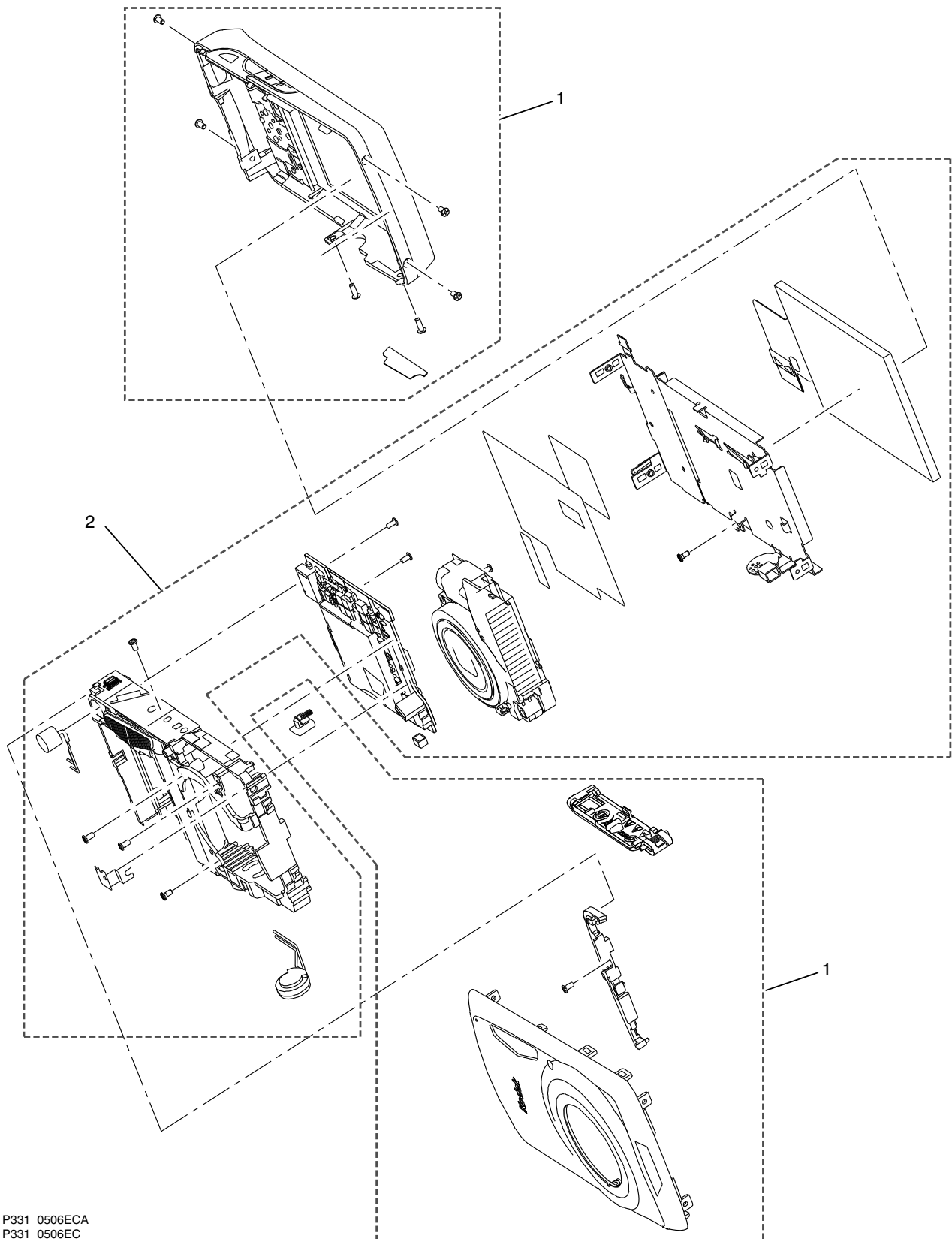
Publication No.	Title
4H6804_en	"KODAK EASYSHARE M530 Digital Camera, Extended user guide"
4H7042_en	"KODAK EASYSHARE MD30 Digital Camera, Extended user guide"

Serial Numbers

The configuration of the serial numbers are:

CAMERA	Serial Numbers
<i>Kodak EasyShare</i> M530 DIGITAL CAMERA	"KCGMH"
<i>Kodak EasyShare</i> MD30 DIGITAL CAMERA	"KCGNF"

Visual Index



P331_0506ECA
P331_0506EC

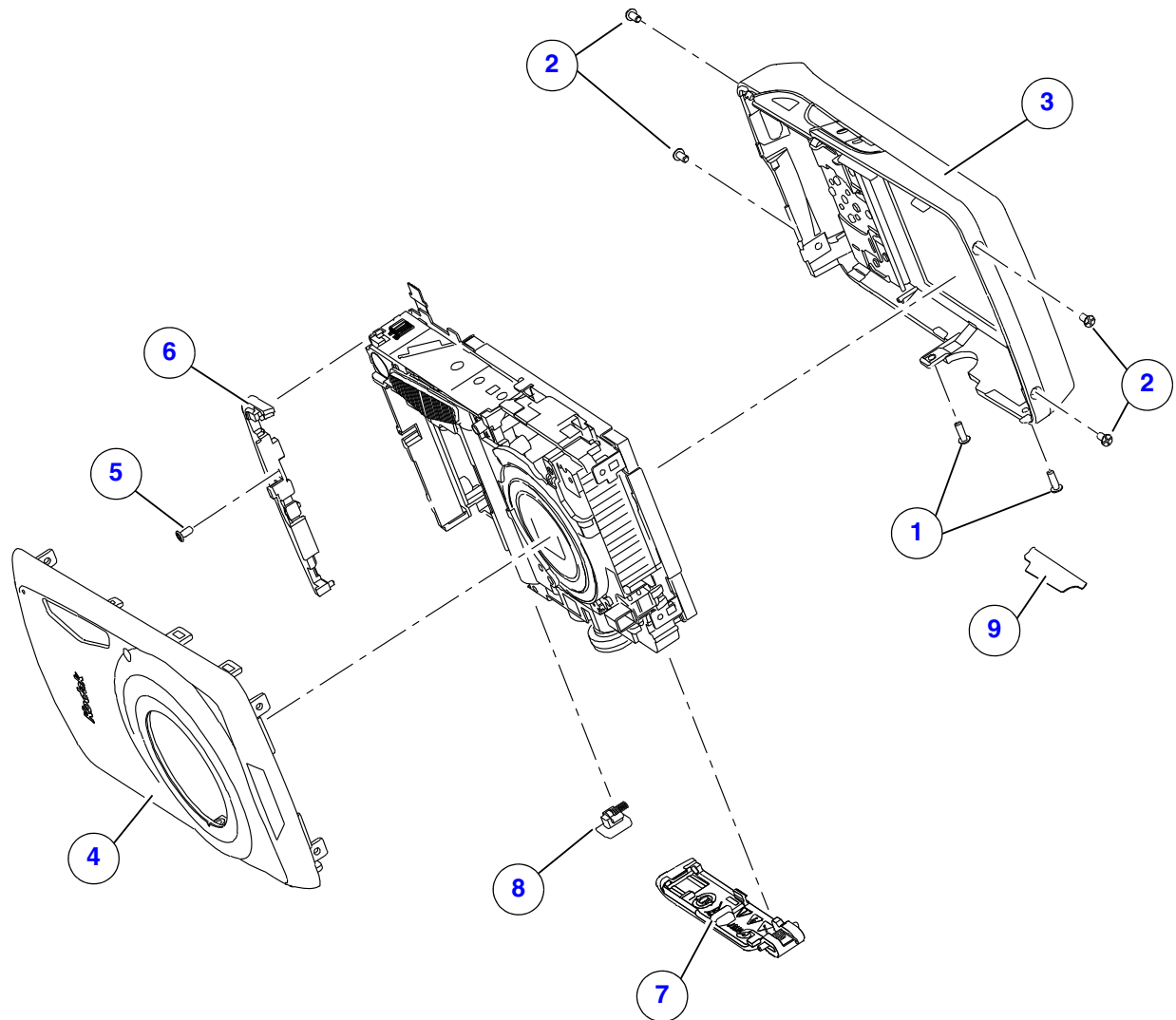
Item	Description
1	"COVER and DOOR AYs" on Page 6
2	"LCD, BOARD, FRAME and LENS AYs" on Page 8

Equipment Parts

**Caution**

- Dangerous Voltage
- You must do a discharge of the STROBE CAPACITOR after you remove the COVER AYs.

Figure 1 COVER and DOOR AYs



P331_0508DCA
P331_0508DC

Figure 1 COVER and DOOR AYs

Item	Part No.	Description	Quantity	Notes
1	8H2023	SCREW - TAP, 1.4 x 4.5, Ni	2	
2	8H2616	SCREW - M, 1.4 x 3.0, CR	4	
3	8H2602	COVER AY - back, black	1	
4	8H2894	COVER AY - back, black, MD30	1	
	8H2601	COVER AY - front, carbon	1	
	8H2609	COVER AY - front, blue	1	
	8H2610	COVER AY - front, orange	1	
	8H2611	COVER AY - front, red	1	
	8H2608	COVER AY - front, green	1	
5	8H2891	COVER AY - front, white, MD30	1	
	8H2615	SCREW - TAP, 1.4 x 3.0, Ni	1	
6	8H2613	HOLDER - strap	1	
7	8H2603	COVER AY - battery, black	1	
8	8H2604	LOCK AY - battery	1	
9	8H2617	PLATE - data	1	
- - - -	8H2892	PLATE - data, MD30	1	
	3F9345	STRAP - wrist, black	1	Not visible in the graphic.

**Caution**

- Dangerous Voltage
- You must do a discharge of the STROBE CAPACITOR after you remove the COVER AYs.
- If you do a replacement of the LCD, you must use the type that matches the MAIN BOARD AY.
 - LCD 8H2618 matches the MAIN BOARD AY that has the ASIC with the number “AL8910”
 - LCD 8H2619 matches the MAIN BOARD that has the ASIC with either of the numbers “AL8923” or “AL8925”

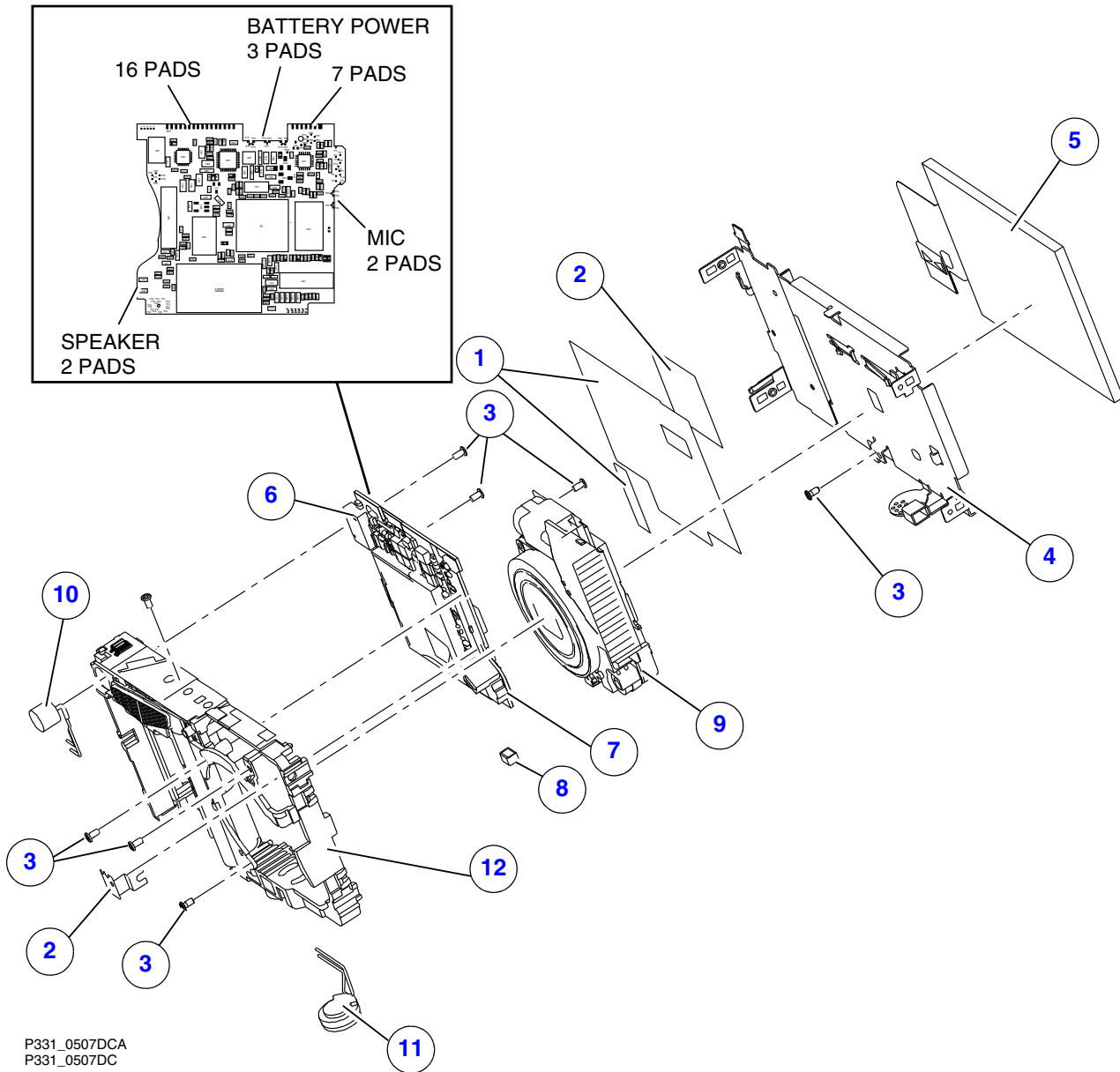
Figure 2 LCD, BOARD, FRAME and LENS AYs

Figure 2 LCD, BOARD, FRAME and LENS AYs

Item	Part No.	Description	Quantity	Notes
1	----	TAPE - <i>Mylar</i>	2	<ul style="list-style-type: none"> • back of the LCD HOLDER AY • LENS FPC • LCD HOLDER AY • LCD FPC
2	----	FOIL - copper	2	
3	8H2615	SCREW - TAP, 1.4 x 3.0, Ni	7	
4	----	HOLDER AY - LCD	1	You must disconnect the FPCs: <ul style="list-style-type: none"> • UI BOARD from TAKE BOARD • LCD from MAIN BOARD See the Caution on Page 8 . See the Caution on Page 8 .
5	8H2618	LCD, 6.9 cm (2.7 in.), <i>Wintek</i>	1	
	8H2619	LCD, 6.9 cm (2.7 in.), <i>Wintek</i>	1	
6	----	JOINTS - solder	30	From the MAIN BOARD TO: <ul style="list-style-type: none"> • BATTERY CONTACT - 3 • SPEAKER - 2 • MICROPHONE - 2 • TAKE BOARD - 16 • TAKE BOARD - 7
7	*	BOARD AY - main	1	
	*	BOARD AY - main	1	
8	----	GASKET	1	
9	*	LENS AY - with CCD	1	
	*	LENS AY - without CCD	1	
	*	LENS AY - MD30	1	
10	8H2621	MICROPHONE	1	
11	8H2620	SPEAKER	1	
12	*	FRAME AY - main	1	Includes: <ul style="list-style-type: none"> • BATTERY BOX • BATTERY CONTACTS • STROBE • TAKE BOARD Not visible in the graphic. See the bottom of the TAKE BOARD. See the bottom of the MAIN BOARD.
----	8H2965	BOARD - UI	1	
----	8H2622	FUSE - 1.25 A, 32 V, F1	1	
----	8H2623	FUSE - 2.0 A, 32 V, F700	1	

* This part is not available because you must do a calibration of the CAMERA using Kodak proprietary technology to comply with the specification, or the part is not in stock.

Section 2: Alphabetical Index

Alphabetical Index

Part No.	Description	Figure No.
8H2965	BOARD - UI	2
*	BOARD AY - main	2
8H2602	COVER AY - back, black	1
8H2894	COVER AY - back, black, MD30	1
8H2603	COVER AY - battery, black	1
8H2609	COVER AY - front, blue	1
8H2601	COVER AY - front, carbon	1
8H2608	COVER AY - front, green	1
8H2610	COVER AY - front, orange	1
8H2611	COVER AY - front, red	1
8H2891	COVER AY - front, white, MD30	1
----	FOIL - copper	2
*	FRAME AY - main	2
8H2622	FUSE - 1.25 A, 32 V, F1	2
8H2623	FUSE - 2.0 A, 32 V, F700	2
----	GASKET	2
8H2613	HOLDER - strap	1
----	HOLDER AY - LCD	2
----	JOINTS - solder	2
8H2618	LCD, 6.9 cm (2.7 in.), <i>Wintek</i>	2
8H2619	LCD, 6.9 cm (2.7 in.), <i>Wintek</i>	2
*	LENS AY - MD30	2
*	LENS AY - with CCD	2
*	LENS AY - without CCD	2
8H2604	LOCK AY - battery	1
8H2621	MICROPHONE	2
8H2617	PLATE - data	1
8H2892	PLATE - data, MD30	1
8H2616	SCREW - M, 1.4 x 3.0, CR	1
8H2615	SCREW - TAP, 1.4 x 3.0, Ni	1, 2
8H2023	SCREW - TAP, 1.4 x 4.5, Ni	1
8H2620	SPEAKER	2
3F9345	STRAP - wrist, black	1
----	TAPE - <i>Mylar</i>	2

Section 3: Diagnostics

Error Codes

E00

Description	Recommended Action
A communication error occurs between the MCU and the 16-BIT MAIN CPU.	<ol style="list-style-type: none"> 1. Do “Upgrading the Firmware Using the MEMORY CARD” on Page 24. 2. If the error occurs again, do a replacement of the CAMERA.

E12

Description	Recommended Action
An error occurs when the LENS retracts after energizing the CAMERA.	<ol style="list-style-type: none"> 1. Check the FPC CABLE from the MOTOR to the CONNECTOR J500 on the MAIN BOARD. 2. If necessary, install: <ul style="list-style-type: none"> • new MAIN BOARD • new LENS AY

E14

Description	Recommended Action
An error occurs when the LENS extends after energizing the CAMERA.	<ol style="list-style-type: none"> 1. Check the FPC CABLE from the MOTOR to the CONNECTOR J500 on the MAIN BOARD. 2. If necessary, install: <ul style="list-style-type: none"> • new MAIN BOARD • new LENS AY

E15

Description	Recommended Action
An error occurs when the STEP MOTOR resets after energizing the CAMERA.	<ol style="list-style-type: none"> 1. Check the FPC CABLE from the MOTOR to the CONNECTOR J500 on the MAIN BOARD. 2. If necessary, install: <ul style="list-style-type: none"> • new MAIN BOARD • new LENS AY

E20

Description	Recommended Action
An error occurs when the CAMERA writes to the NANDFLASH memory.	<ol style="list-style-type: none"> 1. Do “Upgrading the Firmware Using the MEMORY CARD” on Page 24. 2. If the error occurs again, do a replacement of the CAMERA.

E22

Description	Recommended Action
An error occurs when the LENS retracts during de-energizing the CAMERA.	<ol style="list-style-type: none">1. Check the FPC CABLE from the MOTOR to the CONNECTOR J500 on the MAIN BOARD.2. If necessary, install:<ul style="list-style-type: none">• new MAIN BOARD• new LENS AY

E25

Description	Recommended Action
An error occurs when the STEP MOTOR resets during de-energizing the CAMERA.	<ol style="list-style-type: none">1. Check the FPC CABLE from the MOTOR to the CONNECTOR J500 on the MAIN BOARD.2. If necessary, install:<ul style="list-style-type: none">• new MAIN BOARD• new LENS AY

E41

Description	Recommended Action
An error occurs when the LENS moves to the "Tele" position.	<ol style="list-style-type: none">1. Check the FPC CABLE from the MOTOR to the CONNECTOR J500 on the MAIN BOARD.2. If necessary, install:<ul style="list-style-type: none">• new MAIN BOARD• new LENS AY

E81

Description	Recommended Action
An error occurs when the LENS moves to the "Wide" position.	<ol style="list-style-type: none">1. Check the FPC CABLE from the MOTOR to the CONNECTOR J500 on the MAIN BOARD.2. If necessary, install:<ul style="list-style-type: none">• new MAIN BOARD• new LENS AY

Troubleshooting

For primary troubleshooting procedures, see:

Document	Section
"KODAK EASYSHARE M530 Digital Camera, Extended user guide"	Troubleshooting
"KODAK EASYSHARE MD30 Digital Camera, Extended user guide"	Troubleshooting

LCD

Description	Recommended Action
The LCD does not energize.	<ol style="list-style-type: none"> Check: <ul style="list-style-type: none"> FPC from the LCD to CONNECTOR J400 on the MAIN BOARD power of the LED BACKLIGHT is 3.4V - 4.2V If necessary, install a new LCD.
<ul style="list-style-type: none"> The LCD energizes, but the screen is blank. The image on the LCD is not in focus. Horizontal or vertical lines display on the LCD. The video function is not operating correctly. 	<ol style="list-style-type: none"> Check the FPC from: <ul style="list-style-type: none"> LCD to CONNECTOR J400 on the MAIN BOARD CCD BOARD to CONNECTOR J300 on the MAIN BOARD If necessary, install a new LCD.
Malfunction of pixels occurs on the LCD.	Install a new LCD.

FLASH

Description	Recommended Action
The FLASH does not energize.	<ol style="list-style-type: none"> Check that the correct mode of the FLASH is selected. Measure the voltage of the FLASH CAPACITOR across both ends of the LAMP. The voltage should be > 300 V. Check that the TRIGGER WIRE is soldered correctly.
The FLASH operates in the "Fill Flash" mode, but does not operate in the "Auto Flash" mode.	Check the brightness of the environment.
Smoke emits from the CAMERA when the FLASH is actuated.	Check: <ul style="list-style-type: none"> connection of the metal PLATE between the FLASH AY and the TAKE BOARD FLASH COVER or REFLECTOR AY has no debris
The LAMP for the FLASH is dark.	<ol style="list-style-type: none"> Check the connection of the metal PLATE between the FLASH AY and the TAKE BOARD. If necessary, install a new FRAME AY that includes the FLASH AY.

MEMORY CARD

Description	Recommended Action
The CAMERA does not recognize the MEMORY CARD.	<ol style="list-style-type: none"> 1. Use a new MEMORY CARD. 2. Check: <ul style="list-style-type: none"> • “Image Storage” option is set to “Auto” • SOCKET of the MEMORY CARD on the MAIN BOARD has no damage 3. If necessary, install a new MAIN BOARD.
Images are not stored on the MEMORY CARD.	<ol style="list-style-type: none"> 1. Use a new MEMORY CARD. 2. Check: <ul style="list-style-type: none"> • position of the WRITE PROTECT SWITCH on the SD MEMORY CARD is not “LOCK” • “Image Storage” option is set to “Auto” • SOCKET of the MEMORY CARD on the MAIN BOARD has no damage 3. Format the MEMORY CARD and capture an image again. 4. If necessary, install a new MAIN BOARD.

Power

Description	Recommended Action
The CAMERA does not energize.	<ol style="list-style-type: none"> 1. Check: <ul style="list-style-type: none"> • power source for the CAMERA • FUSE F600 and FUSE 601 on the MAIN BOARD. If necessary, install a new FUSE. 2. Diagnose the MODULE that has the malfunction. <ul style="list-style-type: none"> • Disconnect all MODULES from the MAIN BOARD. • Connect the MODULES one at a time, until the FUSE opens. 3. If necessary, install a new: <ul style="list-style-type: none"> • MAIN BOARD • FRAME AY
The CAMERA operates only with the BATTERY.	<ol style="list-style-type: none"> 1. Check: <ul style="list-style-type: none"> • power source for the CAMERA • USB CONNECTOR on the MAIN BOARD 2. If necessary, install a new MAIN BOARD.

Image Quality

Description	Recommended Action
The images are black.	<ol style="list-style-type: none"> 1. Check the connections of the LENS FPC and the LCD FPC to the MAIN BOARD. 2. If necessary, install a new MAIN BOARD.
<ul style="list-style-type: none"> • The image is not in focus. • The color of the image is not correct. • The images are too light. • The images are too dark. • The images have pixels that are continually energized. 	<ol style="list-style-type: none"> 1. Install a new LENS AY with CCD. 2. If necessary, install a new MAIN BOARD.

Communication

Description	Recommended Action
The CAMERA does not download images from the USB PORT.	<ol style="list-style-type: none"> 1. Connect the CAMERA to the computer to check for communication. 2. Check for damage to the USB CONNECTOR on the MAIN BOARD. 3. If necessary, install a new MAIN BOARD.

General Functions

Description	Recommended Action
<p>One or more do not operate correctly:</p> <ul style="list-style-type: none"> • “Delete” BUTTON • “Menu” BUTTON • “Info” BUTTON • “Review” BUTTON • “share” BUTTON • 4-WAY BUTTON • “OK” BUTTON • “Zoom” BUTTON 	<ol style="list-style-type: none"> 1. Check for damage to: <ul style="list-style-type: none"> • BUTTONS • UI SILVERBOARD • CONNECTOR on the UI SILVERBOARD to J100 on the MAIN BOARD 2. If necessary, install a new: <ul style="list-style-type: none"> • UI SILVERBOARD • MAIN BOARD
<p>One or more do not operate correctly:</p> <ul style="list-style-type: none"> • SHUTTER BUTTON • POWER BUTTON • MODE BUTTON • “Flash” BUTTON 	<ol style="list-style-type: none"> 1. Check for damage to: <ul style="list-style-type: none"> • BUTTONS • TAKE BOARD AY 2. Check the SOLDER of the TAKE BOARD to the MAIN BOARD. 3. If necessary, install a new FRAME AY that has a new TAKE BOARD AY.

Checkout Procedures

Checking the General Functions of the CAMERA



Important

You must do these procedures before you return the CAMERA to the customer.

Checking the BATTERY Receiving a Charge



Caution

Dangerous Voltage

- [1] Insert a RECHARGEABLE BATTERY that does not have a full charge into the CAMERA.
- [2] Connect:
 - USB CABLE to:
 - CAMERA
 - USB AC ADAPTER
 - USB AC ADAPTER to a power source
- [3] Check that the white LED on the top of the CAMERA blinks, indicating the BATTERY is receiving a charge.
- [4] Disconnect:
 - USB AC ADAPTER from the power source
 - USB CABLE from:
 - USB AC ADAPTER
 - CAMERA
- [5] Remove the BATTERY from the CAMERA.

Checking the Energizing Sequence



Caution


Dangerous Voltage



- [1] Insert a BATTERY with a full charge into the CAMERA.
- [2] Energize the CAMERA.
- [3] If the LCD displays the “Set Date & Time” options:
 - select “Cancel”
 - wait until the CAMERA completes energizing
- [4] Check the energizing sequence:
 - LENS extends to the default “Wide” position
 - LCD:
 - displays the “Smart Capture” mode with the “LiveView” image
 - does not display error codes
- [5] De-energize the CAMERA.
- [6] Check that the Kodak logo displays before the CAMERA de-energizes.
- [7] Insert a MEMORY CARD into the CAMERA.
- [8] Energize the CAMERA.
- [9] Check the energizing sequence. See [Step 4](#).
- [10] Continue to [“Checking the BUTTONS and SWITCHES” on Page 17](#).

Checking the BUTTONS and SWITCHES


[1] Press the SHUTTER BUTTON to capture an image.

[2] Check the following BUTTONS and SWITCHES.

BUTTON/SWITCH	Do:
<ul style="list-style-type: none"> • “Menu” • 4-WAY BUTTON • “OK” 	<ol style="list-style-type: none"> 1. Press the “Menu” BUTTON. 2. Check that the LCD displays options. 3. Press: <ul style="list-style-type: none"> • 4-WAY BUTTON to the right to move to the last Menu tab • 4-WAY BUTTON down to “Date & Time” • “OK” to select that option • 4-WAY BUTTON left, right, up and down to select and change settings • “OK” to select the settings 4. Check that the BUTTONS moved the cursor correctly. 5. Press the “Menu” BUTTON to quit.
<ul style="list-style-type: none"> • “Delete” • SHUTTER 	<ol style="list-style-type: none"> 1. Press: <ul style="list-style-type: none"> • SHUTTER BUTTON to capture an image • “Delete” BUTTON 2. Check that “Delete picture?” displays. 3. Use the 4-WAY BUTTON to select “Yes”. 4. Press the “OK” BUTTON to delete the image.
<p>“Info”</p> <p> Note</p> <p>This procedure also does a test of the SELF-TIMER.</p>	<ol style="list-style-type: none"> 1. Press: <ul style="list-style-type: none"> • “Info” BUTTON to display “Self Timer Off” and the “Self Timer Off” icon • 4-WAY BUTTON up and down to change the “Self Timer” mode 2. Stop on “2 Second Timer” mode. 3. Press the SHUTTER BUTTON. 4. Check: <ul style="list-style-type: none"> • CAMERA automatically captures an image in 2 seconds • mode automatically returns to “Self Timer Off” mode

BUTTON/SWITCH	Do:
<ul style="list-style-type: none"> • “Review” • “share” 	<ol style="list-style-type: none"> 1. Press the “Review” BUTTON. 2. Check that the LCD displays the last captured image. 3. Press the 4-WAY BUTTON left and right. 4. Check: <ul style="list-style-type: none"> • images on the LCD change • image from the “Delete” test is deleted 5. Press the “share” BUTTON. 6. Check that the information or the “Favorites” icon displays. 7. Press: <ul style="list-style-type: none"> • “share” BUTTON again to remove the icon • “Info” BUTTON 8. Check that icons display. 9. Press: <ul style="list-style-type: none"> • “Info” BUTTON again to remove the icons • “Review” BUTTON to quit
“T”	 Important The default position is “Wide”. <ol style="list-style-type: none"> 1. Press and hold the “T” BUTTON to move the LENS to the maximum “Tele” position. 2. Check: <ul style="list-style-type: none"> • LENS moves from the “Wide” to “Tele” positions • magnification of the image on the LCD increases • image is in focus from the “Wide” to “Tele” positions
“W”	<ol style="list-style-type: none"> 1. Press the “W” BUTTON. 2. Check: <ul style="list-style-type: none"> • LENS moves from the “Tele” to “Wide” positions • magnification of the image on the LCD decreases • image is in focus from the “Tele” to “Wide” positions
FLASH	<ol style="list-style-type: none"> 1. Press the FLASH BUTTON to check that the “Flash” icon changes to: <ul style="list-style-type: none"> • “Flash On” • “Red Eye Preflash” • “Auto” • “Flash Off” 2. In low light, press the SHUTTER BUTTON to the “S1” position. 3. Check that the CAMERA: <ul style="list-style-type: none"> • quits the “Flash” icon • captures an image  Note The available modes of the FLASH are determined by the mode of the CAMERA. All modes of the FLASH might not display.

[3] Check the capture modes.

Mode:	Do:
"Smart Capture"	<ol style="list-style-type: none"> 1. Press the MODE BUTTON to display the modes. 2. Use the 4-WAY BUTTON to move to the "Smart Capture" icon. 3. Press the "OK" BUTTON to select the "Smart Capture" mode. 4. Check that "Smart Capture" displays on the LCD. 5. Move the CAMERA toward items. 6. Check that the mode icon changes to a correct mode. For example, "Close Up".
<p> Note</p> <p>This procedure also does a test of:</p> <ul style="list-style-type: none"> • SPEAKER • MICROPHONE 	<ol style="list-style-type: none"> 1. Press the MODE BUTTON to display the modes. 2. Move to and select the "Video" mode. 3. Check: <ul style="list-style-type: none"> • "Video" icon displays on the LCD • FRAMING MARKS are disabled 4. Press and release the SHUTTER BUTTON. 5. During the video file recording, check that "Rec" with the recording time displays on the LCD. 6. Speak some words. 7. Press and release the SHUTTER BUTTON. 8. Check that the LCD displays an option to play back the video file. 9. Press "OK" to begin. 10. Check that the video file begins to play back. 11. Press "OK". 12. Check that the video file stops. 13. Press the "Menu" BUTTON. 14. Check that the LCD displays a list of options. 15. Press the "Menu" BUTTON to quit.
"Program (P)"	<ol style="list-style-type: none"> 1. Press the MODE BUTTON to display the modes. 2. Move to and select the "Program (P)" mode. 3. Check that "Program (P)" displays on the LCD.
"Scenes"	<ol style="list-style-type: none"> 1. Press the MODE BUTTON to display the modes. 2. Check that 18 icons or "scenes" display on the LCD. 3. Press the 4-WAY BUTTON: <ul style="list-style-type: none"> • left • right 4. Check that the selected "scene" changes with: <ul style="list-style-type: none"> • name of the "scene" • icon displays in red • additional icon in the top left corner of the LCD

Checking the ACTUATION, FLASH, and POWER-ON COUNTERS

- [1] Make a folder with the name "HiddenMenu" on a blank MEMORY CARD.
- [2] De-energize the CAMERA.
- [3] Insert the MEMORY CARD into the CAMERA.
- [4] Energize the CAMERA.
- [5] Press:
- "Menu" BUTTON
 - 4-WAY BUTTON right to select "Setup Menu"
 - 4-WAY BUTTON up to select "About..."
 - "OK" BUTTON
- [6] Check that the firmware version displays.
- [7] Press:
- and hold the "Delete" BUTTON
 - 4-WAY BUTTON to the right
- [8] Release the BUTTONS.
- [9] Check that the LCD displays "HIDDEN MENU".
- [10] With the red cursor on "FIRMWARE VERSION", press the "OK" BUTTON.
- [11] Record the information for the COUNTERS in the FEEDBACK SOFTWARE.

COUNTERS on the CAMERA	Description on the FEEDBACK SOFTWARE
"BOOT"	"Boot code Version"
"MAIN"	"Micro processor code Version"



Note

This screen also displays the setting for the type of LCD.

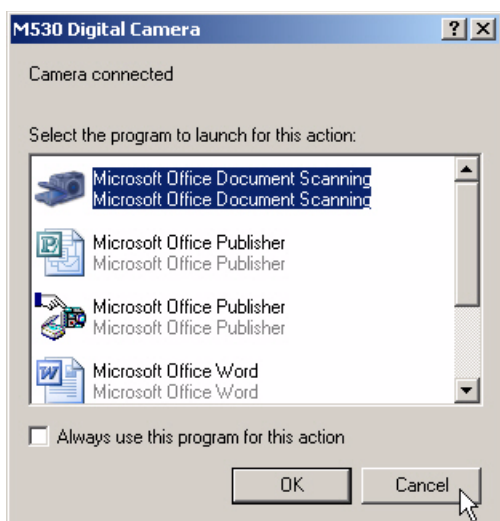
- [12] Press:
- 4-WAY BUTTON left
 - 4-WAY BUTTON down to "TOTAL INFO"
 - "OK" BUTTON
- [13] Record the information for the COUNTERS in the FEEDBACK SOFTWARE.

COUNTERS on the CAMERA	Description on the FEEDBACK SOFTWARE
"ID"	"ID of production Serial Number"
"Total Shot"	"Actuation"
"Total Strobe"	"Flash"
"Total Power On"	"Power On"
"BATPWR"	"Battery Power"

- [14] Press:
- 4-WAY BUTTON left 2 times
 - "Menu" BUTTON 2 times to quit
- [15] De-energize the CAMERA.
- [16] Remove the MEMORY CARD from the CAMERA.

Checking the Communication

- [1] Insert a MEMORY CARD that has images into the CAMERA.
- [2] Energize the CAMERA.
- [3] Connect the CAMERA to the computer with the USB CABLE for the CAMERA.



- [4] If the window displays, click [Cancel].
- [5] Download the images to the computer.

- [6] Did the files download correctly?

Yes	No
<ol style="list-style-type: none"> a. Check the quality of the images. b. Continue with Checking the Accessories. 	<ol style="list-style-type: none"> a. De-energize the CAMERA. b. Do Step 2 - Step 5 again. c. If the CAMERA is not connecting correctly, the USB CONNECTOR on the CAMERA might be malfunctioning.

Checking the Accessories

- [1] Disconnect the USB CABLE from the CAMERA.
- [2] Check that the MEMORY CARD you are using has image files.
- [3] Connect the A/V CABLE to:
 - TELEVISION, VIDEO MONITOR or computer
 - CAMERA
- [4] Energize the CAMERA.
- [5] Press the "Review" BUTTON.
- [6] Check that the LCD de-energizes and the image displays on the TELEVISION, VIDEO MONITOR or computer.
- [7] De-energize the CAMERA.
- [8] If necessary, remove the MEMORY CARD.

Checking the External Components of the CAMERA

- [1] Check the COVERS of the CAMERA for scratches.
- [2] If necessary, install new COVERS.
- [3] Clean:
 - COVERS
 - SCREEN on the LCD
 - FLASH COVER
- [4] Check and clean the LENS.

Section 4: Additional Service Procedures

Using the “HIDDEN MENU” of the CAMERA

Displaying the “HIDDEN MENU”

**Caution**

Dangerous Voltage

- [1] De-energize the CAMERA.
- [2] Insert the MEMORY CARD into a CARD READER/WRITER.
- [3] Make a folder with the name “HiddenMenu” on a blank MEMORY CARD.
- [4] Remove the MEMORY CARD from the CARD READER.
- [5] Insert into the CAMERA:
 - BATTERY with a full charge
 - MEMORY CARD
- [6] Energize the CAMERA.
- [7] Press:
 - “Menu” BUTTON
 - 4-WAY BUTTON to the right to select “Setup”
 - 4-WAY BUTTON up one time to select “About”
 - “OK” BUTTON
- [8] Check that the firmware version displays.
- [9] Press:
 - and hold the “Delete” BUTTON
 - 4-WAY BUTTON to the right
- [10] Release the BUTTONS.
- [11] Check that the LCD displays “HIDDEN MENU” and options.
- [12] To quit, press the 4-WAY BUTTON left 2 times.
- [13] De-energize the CAMERA.
- [14] Remove the MEMORY CARD from the CAMERA.

Checking for the Firmware Version and the Type of LCD

- [1] Do [Step 1 - Step 11](#) of [Displaying the “HIDDEN MENU”](#).
- [2] Select “FIRMWARE VERSION” from the “HIDDEN MENU”.
- [3] Press the “OK” BUTTON.
- [4] Record the type of LCD.
- [5] To quit, do [Step 12 - Step 14](#) of [Displaying the “HIDDEN MENU”](#).

Upgrading the Boot Code of the CAMERA

- [1] Do [Step 1 - Step 3](#) of [Displaying the "HIDDEN MENU"](#).
- [2] In addition to the "HiddenMenu" folder, make a copy of the "TBIB_HD12.BIN" boot code file to the root directory on the MEMORY CARD.
- [3] Do [Step 4 - Step 11](#) of [Displaying the "HIDDEN MENU"](#).
- [4] Select "NAND TOOL" from the "HIDDEN MENU".
- [5] Press "OK".
- [6] Select "Update Boot Code: TBIB_X.BIN".
- [7] Press "OK".
- [8] When the upgrading is complete, do [Step 13 - Step 14](#) of [Displaying the "HIDDEN MENU"](#).

Upgrading the Firmware Using the MEMORY CARD

[1] Does the “Support Center” of the Kodak.com Web Site have the firmware file for this CAMERA?

Yes	No
a. Download the “KM530xxx.exe” firmware file. b. When downloading is complete, double-click the “KM530xxx.exe” firmware file to decompress it to the “KM530.fw” file. c. Continue with Step 2 .	a. The file you downloaded from the Kodak Partner Site is the highest version. Do the procedure using that file. b. Continue with Step 2 .

[2] Insert a BATTERY with a full charge into the CAMERA.

[3] Energize the CAMERA.

[4] Press the “Menu” BUTTON.

[5] Check that the “Image Storage” option is set to “Auto”.

[6] Press the “Menu” BUTTON to quit.

[7] De-energize the CAMERA.

[8] Insert the MEMORY CARD into a CARD READER/WRITER.

[9] Delete all of the files and folders on the MEMORY CARD.

[10] Make:

- folder in the root directory on the MEMORY CARD with the name “system”
- copy of the “KM530.fw” firmware file to the “system” folder on the MEMORY CARD

[11] Remove the MEMORY CARD from the CARD READER.

[12] Insert the MEMORY CARD with the firmware file into the CAMERA.

[13] Energize the CAMERA.

[14] Select “Upgrade”.

[15] Press the “OK” BUTTON.

[16] Select “Continue”.

[17] Press the “OK” BUTTON.

[18] Check that downloading:

- begins
- completes

[19] Select “Exit”.

[20] Press the “OK” BUTTON.

[21] De-energize the CAMERA.

[22] Remove from the CAMERA:

- MEMORY CARD
- BATTERY

[23] Insert the BATTERY into the CAMERA again.

[24] Energize the CAMERA.

[25] Press the “Menu” BUTTON.

[26] Select:

- “Setup Menu” TAB on the right
- “About”

[27] Press the “OK” BUTTON.

[28] Check that the firmware on the CAMERA is the correct version.

[29] Press the “Menu” BUTTON to quit.

[30] De-energize the CAMERA.

Section 5: Publication History

Publication Date	Publication No.	Changed Pages	File Name	Notes
02MAR10	SM9814-2	- - - -	sm9814_2.fm	New Publication
18MAR10	SM9814-2	16	sm9814_2.fm	Added the procedure Checking the BATTERY Receiving a Charge .
15APR10	SM9814-2	4, 7, 9, 10	sm9814_2.fm	Added the information for the <i>Kodak EasyShare</i> MD30 DIGITAL CAMERA.
10JUN10	SM9814-2	9, 10	sm9814_2.fm	Added the part number for the UI BOARD.

Kodak and *EasyShare* are trademarks of Eastman Kodak Company.

Printed in U.S.A. • sm9814_2.fm

EASTMAN KODAK COMPANY
Rochester, NY 14650

Kodak Service & Support