

# INSTALLATION

REPLACEMENT

BRAKE COOLER CIRCUIT BOARD

**SUPERVAC** 

## INSTALL MANUAL

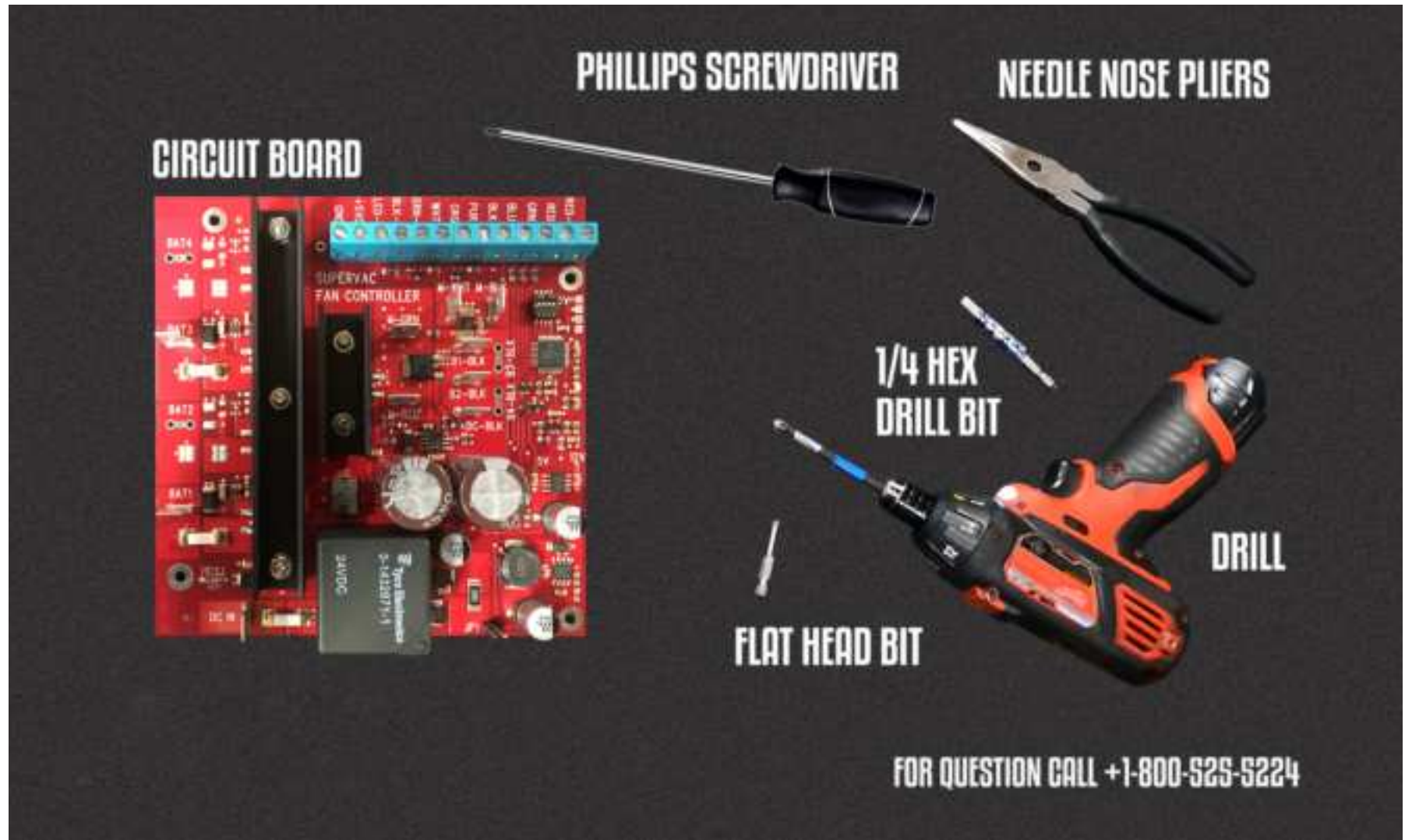
This manual covers the replacement and installation of a circuit board in the Super Vac battery-powered Brake Cooler.

*Please consult your circuit board kit for parts.*



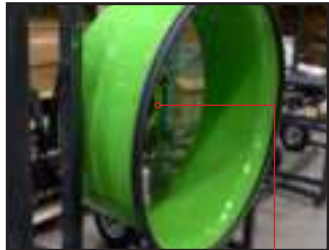
For additional instruction, view installation video at [bit.ly/ReplaceBrakeCoolerCircuitBoard](https://bit.ly/ReplaceBrakeCoolerCircuitBoard)

PARTS AND TOOLS



**STEP 1:**

Remove shroud and electrical box from frame.



Remove (4) bolts.



Remove electrical box from brake cooling fan frame by removing bolt.



Remove electrical box top cover using a Phillips-head screwdriver.

**STEP 3:**

Remove both side panels using a Phillips-head drill bit. (4) Screws inside each panel.



**STEP 2:**



Remove top (2) corner screws using Phillips-head drill bit.



Remove (2) bottom, upper screws using a Phillips-head drill bit.





## STEP 4:

Disconnect all wires and connectors on circuit board:



Lift out circuit board panel.



Remove Circuit board connectors using needle nose pliers.



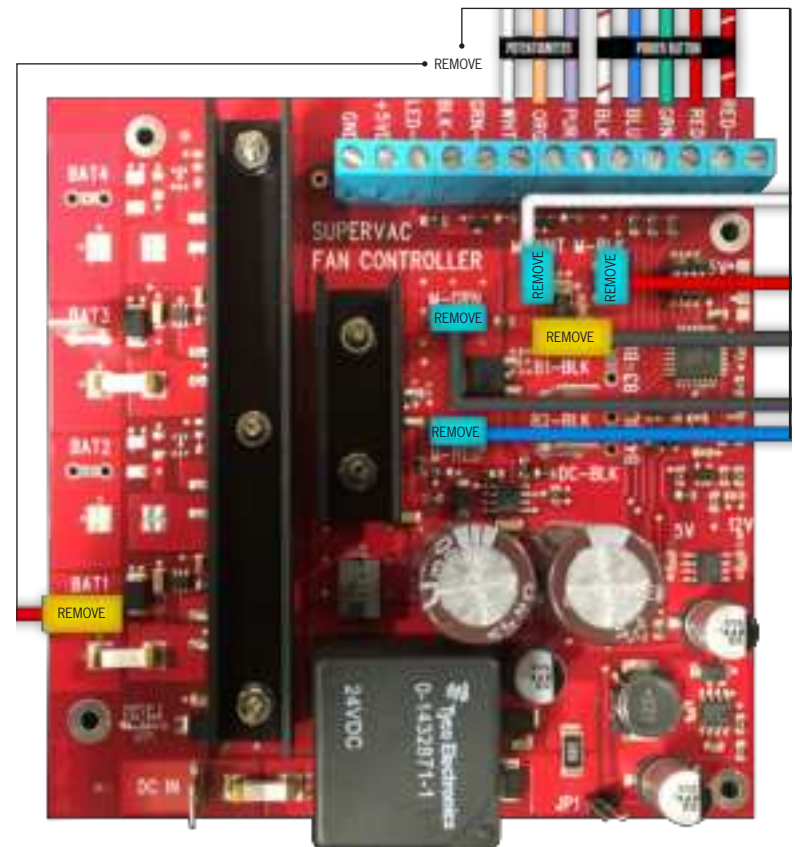
Remove circuit board panel and flip upside down for a more stable work area.



Loosen circuit wire screws using a flat head drill bit, pull out wires from bottom slots.



*Circuits to remove.*



### STEP 5:

Replace circuit board:



Remove each corner fastener (4) on circuit board using a 1/4 hex head drill bit.



Lift out circuit board.



Potentiometer and power wires remain attached to panel.

### STEP 6:

Apply new circuit board.



Align with corner fasteners.



Re-apply corner fasteners (4) using a 1/4 hex head drill bit. (Apply on end of drill bit first.)



**STEP 7:**

Re-insert wires into circuit panel.



Twist wire ends, then insert through bottom opening of corresponding color-label.

**NOTE!** White wire with red stripe = BLK.



Tighten wire screw using a flat-head drill bit.

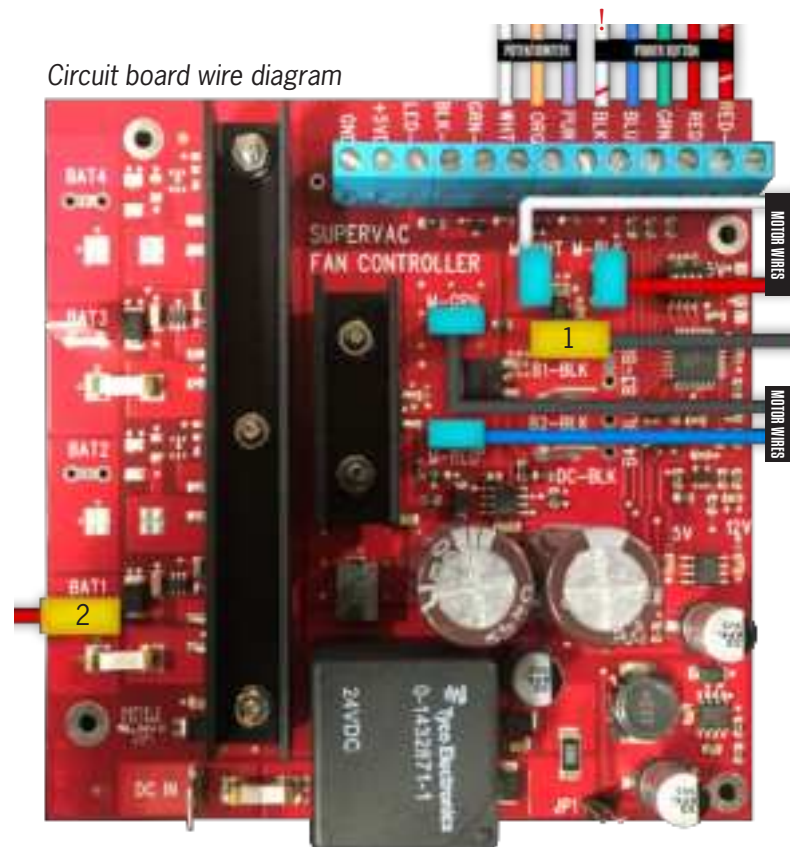


Flip board right side up, re-insert battery wire connectors, be sure to snap tight. (#1 Black to B1-BLK, #2 Red to BAT1 )



Re-insert circuit board panel into electrical box base. Align with top screws.

Circuit board wire diagram



Re-insert motor wire connectors. Snap tight.  
**NOTE!** Labels are different than some wire colors.



LABEL	WIRE
M-BLK	Red
M-WHT	White
M-GRN	Black
M-RED	Blue
B1-BLK	Black
BAT 1	Red

### STEP 8:

Re-apply side panels.



Re-apply side panels using a Phillips-head drill bit. (4) screws inside each panel.



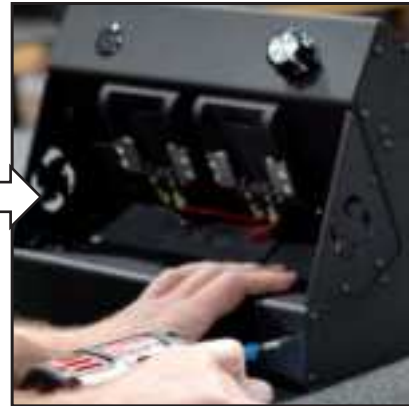
Re-apply side panels using a Phillips-head drill bit. (4) screws inside each panel.

### STEP 9:

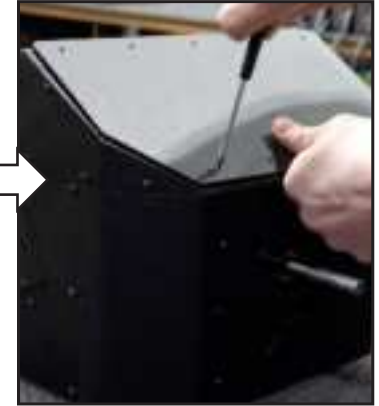
Close up electrical box.



Re-insert top corner (2) screws using a Phillips-head drill bit.



Re-insert bottom (2) screws using a Phillips-head drill bit.



Re-apply top cover using a Phillips-head screw driver to avoid over-tightening.

### STEP 10:

Re-attach electrical box to brake



Attach electrical box to brake cooling fan frame using a ratcheting screwdriver or drill bit.



Re-attach shroud to electrical box with (4) bolts using a ratcheting screwdriver or drill bit.







For parts or service information, contact:

Super Vacuum Manufacturing Company, Inc.

3842 Redman Dr.  
Fort Collins, CO 80524

Phone: 800-525-5224  
970-297-7100

Fax: 970-297-7099

Email : info@supervac.com  
Internet: www.supervac.com