

Operation Manual

SunSun CWF-400 Waterfall Filter 55708



Dies ist ein
Platzhalter für
ein Bild

Illustration similar, may vary depending on model

Read and follow the operating instructions and safety information before using for the first time.

Technical changes reserved!

Due to further developments, illustrations, functioning steps, and technical data can differ insignificantly.

Updating the documentation

If you have suggestions for improvement or have found any irregularities, please contact us.



The information contained in this document may alter at any time without previous notice. It is prohibited to copy or spread any parts of this document in any way without prior written allowance. All rights reserved.

The WilTec Wildanger Technik GmbH cannot be held accountable for any possible mistakes in this operating manual, nor in the diagrams and figures shown.

Even though, the WilTec Wildanger Technik GmbH has undergone biggest possible efforts to ensure that the operating manual is complete, faultless, and up to date, mistakes cannot be entirely avoided.

If you should find a mistake or wish to make a suggestion for improvement, we look forward to hearing from you.

Send an e-mail to:

service@wiltec.info

or use our contact form:

<https://www.wiltec.de/contacts/>

The most recent version of this manual in various languages can be found in our online shop via:

<https://www.wiltec.de/docsearch>

Our postal address is:

WilTec Wildanger Technik GmbH
Königsbenden 12
52249 Eschweiler
Germany

To return orders for exchange, repair, or other purposes, please use the following address. Attention! To allow for a smooth execution of your complaint or return, it is important to contact our customer service team before returning the goods.

Returns Department
WilTec Wildanger Technik GmbH
Königsbenden 28
52249 Eschweiler

E-mail: **service@wiltec.info**

Tel: +49 2403 55592-0

Fax: +49 2403 55592-15

Introduction

Thank you for purchasing this quality product. **To minimise the risk of injury we urge that our clients take some basic safety precautions when using this device. Please read the operation instructions carefully and make sure you have understood its content.**

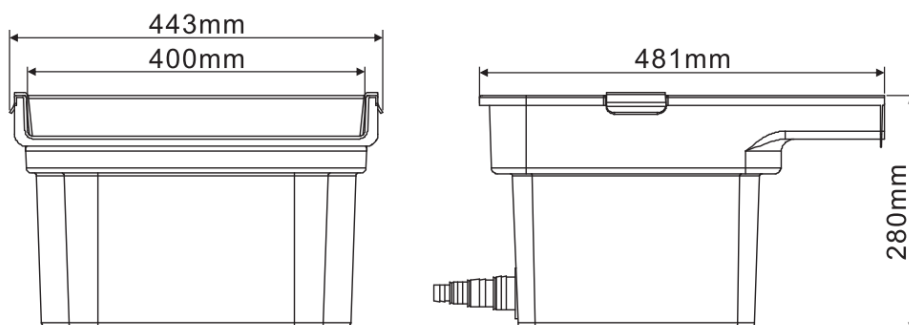
Keep these operation instructions safe.

Safety instructions

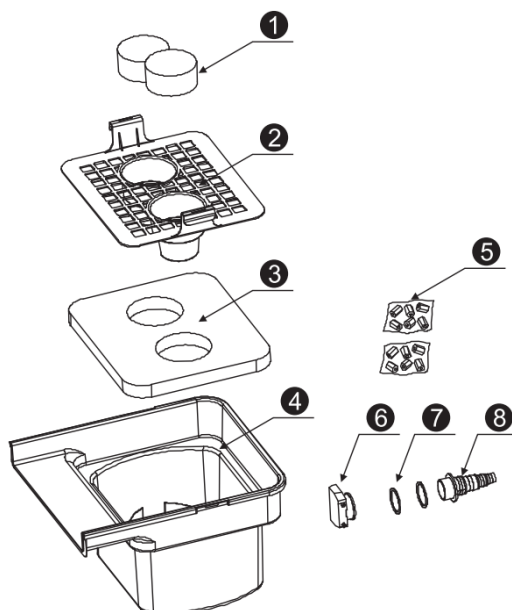
- Perform a visual inspection of the device before each use. Do not use the device if safety features are damaged or worn. Never disable safety features.
- Use the device only for the intended purpose as specified in this manual.
- You are responsible for safety in the working area.
- The device must not be integrated into the drinking water system.
- The device must only be installed outside of the water.
- Ensure that the device cannot fall into the water.
- Position the device in a location where it is not exposed to direct sunlight.
- If necessary, shorten the universal hose connectors according to the hose diameter.
- Secure hoses with hose clamps.
- The maximum temperature of the pumped liquid should not exceed +35 °C in continuous operation.
- The filter is exclusively intended for filtering water in garden ponds!
- The filter is not suitable for filtering water below 8 °C or above 40 °C.
- Do not use it with oil, gasoline, or lubricants. The filter is not frost-resistant! It is therefore recommended not to use the filter in winter.
- The filter must not be used underwater!
- The filter must be placed at least 2 meters away from the edge of the pond!

Technical Data

Model	CWF-400
Max. capacity (ℓ/h)	14.000
Adapter for inlet hose (mm)	20 / 25 / 32 / 38
Width of outlet (mm)	400



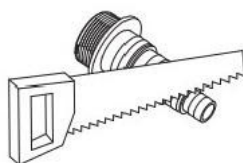
Exploded drawing and parts list



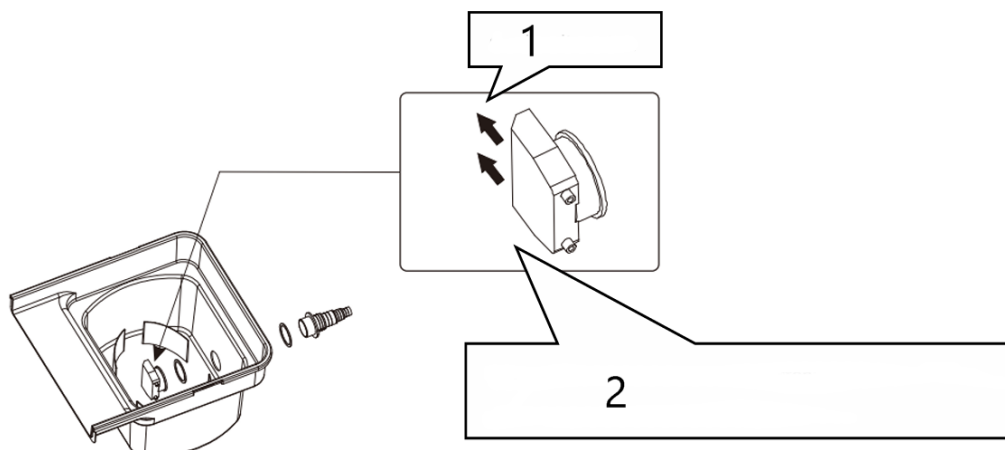
No	Name	No	Name
1	Insert	5	Bio ring
2	Plate	6	Fastening nut
3	Bio sponge	7	Gasket
4	Container	8	Inlet

Installation

1. For maximum water flow, cut the connection point as shown in the illustration. Ensure that the cut matches the diameter of the water pipe used. Use the largest hose diameter compatible with the pump to achieve the maximum flow rate.



2. Install the fastening nut, the two gaskets, and the inlet as shown in the illustration below.

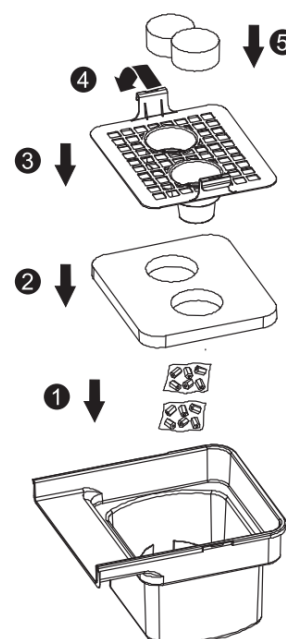


Nº	Name/explanation
1	Outlet Direction
2	Note! Keep the outlet side of the fastening nut horizontal to the left or right to achieve optimal performance.

- Insert the bio ring and the sponge into the container in sequence. Then, place the plate on top and secure the container at both ends with the clips. Finally, insert the insert (reverse the order for cleaning).
- Connect one end of the hose to the pump (or filter) outlet and the other end to the inlet, then tighten it securely. Place the pump (not included) into the pond and install the product on the base (recommended height: maximum 80 cm above the water surface).

Attention!

- Ensure that the entire surface where the product is placed is level to prevent tipping. A slight 1–2 cm forward incline is beneficial.
- Aquatic plants can be placed on the insert.
- To make the overall appearance more natural and professional, natural materials such as stones, turf, or other covering materials can be used to conceal the product and hoses.



Important notice:

The reprint or reproduction, even of excerpts, and any commercial use, even in part, of this instruction manual require the written permission of WilTec Wildanger Technik GmbH.