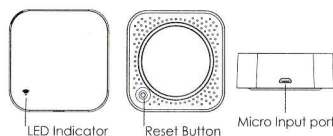
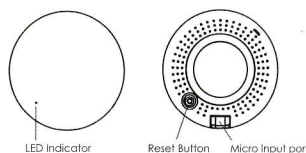


# Universal IR Remote Control with Temperature & Humidity Sensor

## USER MANUAL



Model: S06Pro



Model: S08Pro

3. Connect your mobile to your Wi-Fi router, supply power to the remote control with Micro charging cable, click "+" in the upper right corner of homepage or click "Add Device".



4. 1) Turn on the bluetooth in mobile: The app will advise you to turn on the bluetooth in your mobile, then you choose the device to add. Enter Wi-Fi name and password, it will connect the network automatically.

Thanks for choosing our product !

Say goodbye to use remote controls for each of the IR home appliances such as TV, Air-conditioner, TV box, light, Fan, Audio, etc. You can remotely control these devices with the tap of your finger on the mobile App. Also you can real-time monitor the temperature and humidity on App at anytime anywhere.

Please read the user manual carefully before usage and keep it for future reference.

## What's in the box:

Remote Control X 1PCS

Manual X 1PCS

Micro Charging Cable X 1PCS

Adhesive tape X 1PCS

## Product Specification

Size: 60\*60\*20mm (S06Pro)  
Φ75\*20mm (S08Pro)

Micro Input: DC 5V/1A

LED Indicator: Blue

Infrared Frequency: 38KHz

Infrared Range: ≤ 12 Meters

Wi-Fi Protocol: 2.4GHz

Wi-Fi Standard: IEEE 802.11 b/g/n

Temperature Measure Range: 0℃~60℃

Temperature Accuracy: ±1℃

Humidity Measure Range: 0% RH~99% RH

Humidity Accuracy: ±5% RH

## Checklist before using the device:

- Your smartphone has connected to 2.4GHz Wi-Fi network.
- Input the correct Wi-Fi password.
- Your smartphone must be Android 4.4 + or iOS 8.0 +.
- Your Wi-Fi router is MAC-open.

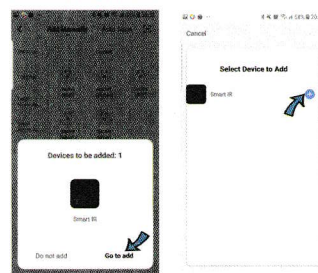
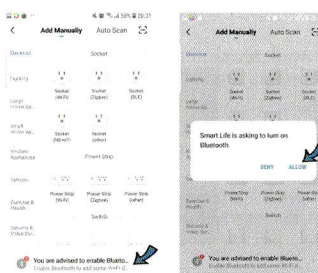
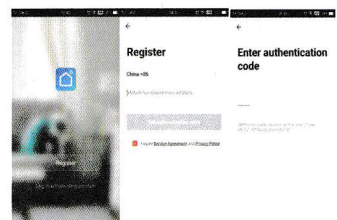
e. If the numbers of devices connected to the Wi-Fi router reach the limit, you can try to disable a device to vacate the channel or try with another router.

## How to set up:

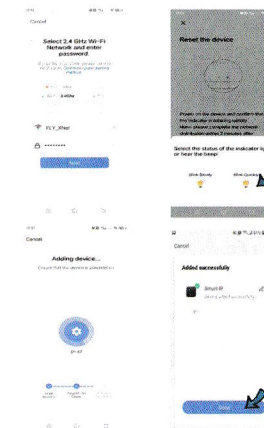
1. Use your smartphone to scan below QR code, or search "Smart Life" app in Google Play Store or APP Store to download and install.



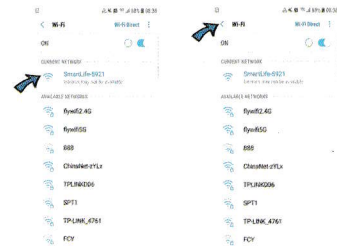
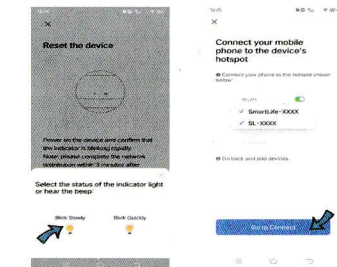
2. Create an account with your mobile number and authentication code.



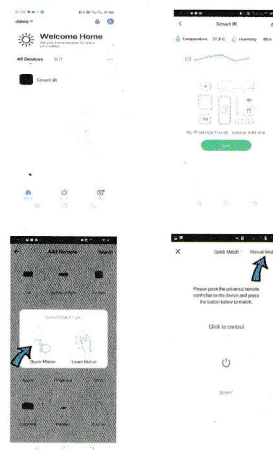
2) Do not turn on the bluetooth: Select "Universal Remote Control (Wi-Fi+BLE)" from "Others", enter Wi-Fi password, select "Blink Quickly", make sure the LED indicator is blinking rapidly. if not, hold the reset button for about 5s till indicator blink rapidly. it will connect.



3) You can also select "Blink Slowly", make sure the LED indicator is blinking slowly, if not, hold the reset button for about 5s till indicator blink slowly. Connect your mobile to the device's hotspot: "SmartLife-XXXX", then click to return to App interface, it will connect automatically, configuration complete.



5. Tap "Smart IR", then click "Add ", select the device and its brand you need control, click " Manual Mode" to match the buttons, please match at least 3 buttons to check if the device reacts properly, if yes, match succeed, you can control the device now.



-11-

## 2. Intelligent Linkage

When the ambient environment change, you can execute intelligent linkage. For example, when the room temperature surpass 35C, the air-conditioner will open automatically, or when the humidity lower than 20% RH, the humidifier will spray.

## 3. Remote control

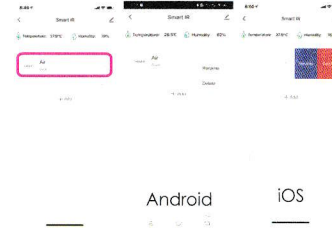
You can control IR devices remotely wherever you are at anytime on the mobile app.

## 4. Set Schedule

Select "Tap to Run" or "Automation" in "Scene" page, tap "+" to select "Schedule" to set power on/off.

-16-

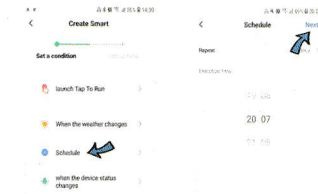
6. After adding the device, if you want to edit the device name, For Android, long press the box, it will pop up "Rename", click it to edit. For iOS, slide the box towards the left, choose "Rename" to edit.



Android iOS

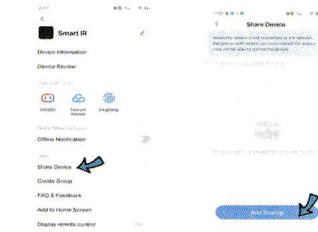
-12-

7. If you can not find the brand of the device in the brand list, you can choose "DIY" to learn buttons of other brands' remote control, so you can also control.

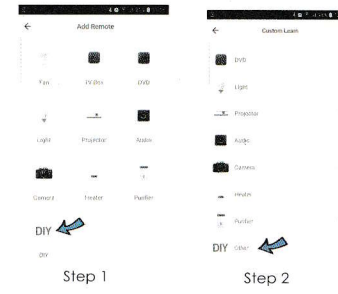


## 5. Share devices

You can share your added devices with your family members, so they can also control the devices.

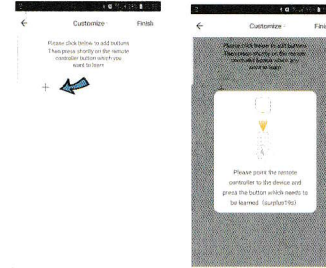


-17-



Step 1

Step 2



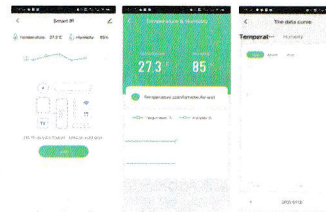
Step 3

Step 4

-13-

## 6. Monitor Temperature & Humidity

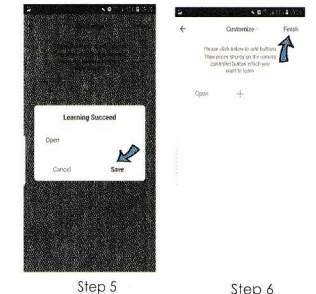
About 30 minutes after configuration, the temperature and humidity is closer to the actual ambient environment. You can real-time monitor the data on APP, and also can view the records.



## 7. Third-party Voice Control

Works with amazon alexa and google assistant.

-18-



Step 5

Step 6

8. You can click "+" to continue to copy other buttons or click "Finish".

## Notes:

1. It only support 38KHz frequency, if the IR remote unable to receive commands from the IR device, it is likely that the frequency of IR device does not match, unable to study commands.
2. DIY does not support voice control.

## FAQ

### 1. What devices can be controlled with IR remote control?

You can control TV, Air-conditioner, Fan, DVD, TV box, Light, Set-top box, Audio, Projector, Water Heater, Air purifier, etc.

### 2. When the temperature and humidity on the App is more accurate?

About 30 minutes after configuration completed, the temperature and humidity displayed on the App is closer to actual ambient environment, so the readings are more accurate. Please keep it away from any heat source.

### 3. What should i do when device configuration process fail?

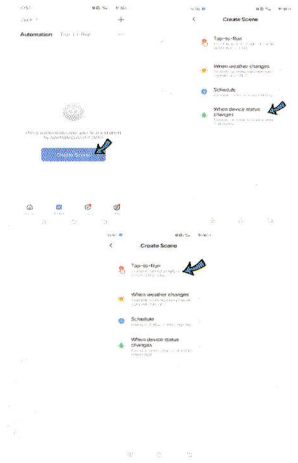
- 1)Check whether IR remote is powered on or not.
- 2)Check whether your mobile phone is connected to 2.4GHz wifi network.
- 3)Check your network connectivity, make sure the Wi-Fi router is working properly.
- 4)Make sure the wifi password is correct.

-19-

## Functions

### 1. Customize Scenario

Create smart scene for IR devices, click "Scene" page, then click "Create scene" to set conditions and tasks.



-15-

### 4. The IR remote can go through walls or be used to control devices in upstairs/downstairs rooms?

IR can not penetrate walls, so make sure there is no obstacle between IR remote and the IR devices.

### 5. What should we do when we can not use IR remote to control device?

Please check the following:

- 1) IR remote network in good condition (click any key on the remote control panel in the app and check whether the indicator light starts flashing. If it flashes, it indicates to work properly.
- 2) There are no obstacles or barriers between the IR remote and the device.
- 3) The factory remote control of electric device is IR-enabled. (Cover the top of the IR remote with hand or any objects, then press any keys of the remote control, if the device does not response, it is IR based. Otherwise, it is bluetooth or RF based remote control.

-20-