

# YYR & YYS CCT Button

Model: YYR & YYS

## Installation Instructions

All installations must be carried out by a qualified electrician following local regulations. Make sure that the power is switched off before installation. Please read and follow the 'Installation instructions' and 'Safety instructions' sections carefully before commencing installation.

Installation of this model can change from time to time please read instructions every time before installation. For detailed specification, please go to our website [eurotechlighting.co.nz](http://eurotechlighting.co.nz)

Code:	Dimensions (mm):	Dimmable:	Double Insulated:	IP Rating:	Kelvins:	Lumens:	Material:	Watts:
YYR15WCCT	220Ø x 53D	Yes	Yes	IP54	3K / 4K / 6K	1250lm / 1300lm / 1350lm	UV resistant Polycarbonate body and diffuser	15W
YYR18WCCT	280Ø x 53D				3K / 4K / 6K	1550lm / 1600lm /1650lm		18W
YYR24WCCT	330Ø x 53D				3K / 4K / 6K	2150lm / 2250lm / 2300lm		24W
YYS15WCCT	220L x 220H x 53D				3K / 4K / 6K	1250lm / 1300lm / 1350lm		15W
YYS18WCCT	280L x 280H x 53D				3K / 4K / 6K	1550lm / 1600lm /1650lm		18W
YYS24WCCT	330L x 330H x 53D				3K / 4K / 6K	2150lm / 2250lm / 2300lm		24W

### Product Information - YYR



Product Visual

### Product Information - YYS



Product Visual

### Safety Instructions

Read these instructions carefully before commencing installation.

1. The light source contained in this luminaire shall only be replaced by the manufacturer or this service agent or a similar qualified person.
2. This LED luminaire must be installed by a licensed electrician ONLY following all local regulations.
3. Ensure that the cables will not be squeezed or damaged by sharp edges.
4. Clean the light with a soft cloth and a standard PH-neutral detergent.
5. Misuse of/or changes to the appliance shall void all warranties.
6. Do not install on a surface that is not suitable or deformed.
7. Do not install on or above a surface with a high temperature.
8. There should not be any materials that are corrosive, explosive.



For detailed specification, please go to our website [eurotechlighting.co.nz](http://eurotechlighting.co.nz)

**eurotech**  
lighting

# YYR & YYS CCT Button

Model: YYR & YYS

## Installation Instructions

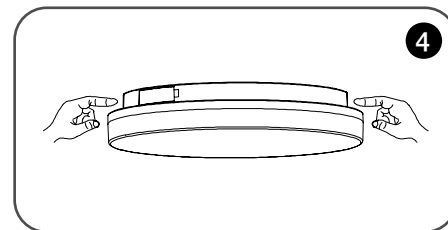
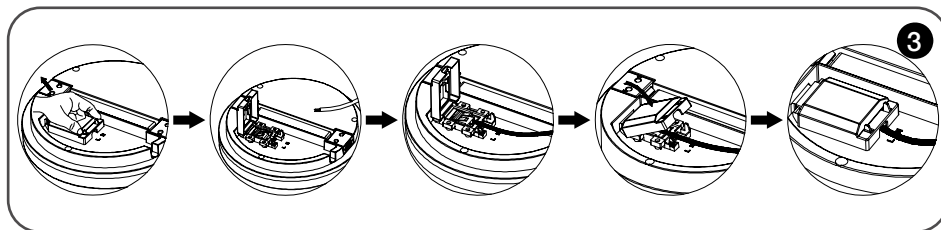
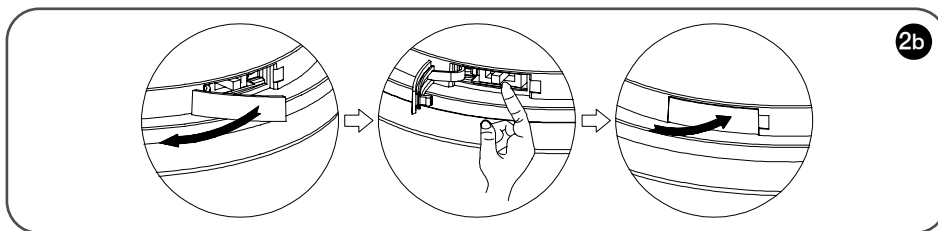
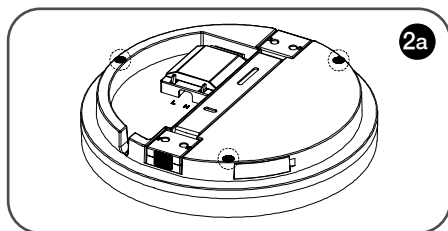
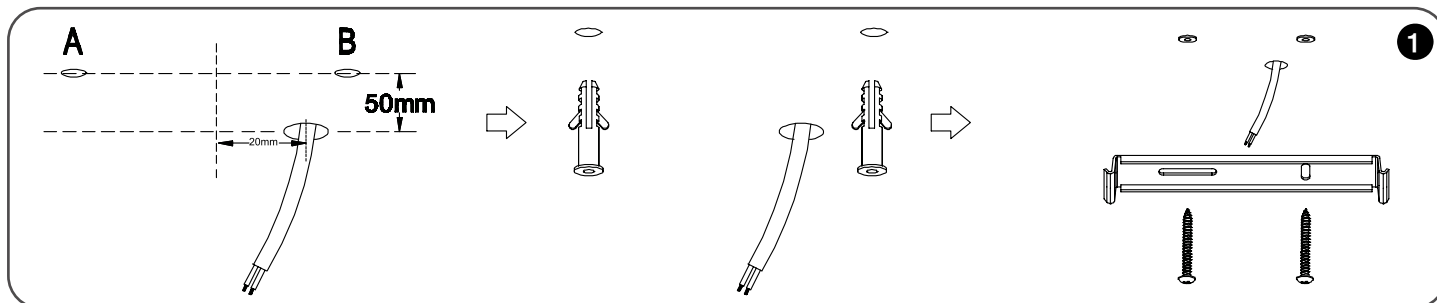
**All installations must be carried out by a qualified electrician following local regulations. Make sure that the power is switched off before installation. Please read and follow the 'Installation instructions' and 'Safety instructions' sections carefully before commencing installation.**

Installation of this model can change from time to time please read instructions every time before installation. For detailed specification, please go to our website [eurotechlighting.co.nz](http://eurotechlighting.co.nz)

### Installation Instructions

1. Fix mounting bracket in relation to power entry.
  - a. For power entry from ceiling make central point of bracket approximately 50mm up and 20mm across from power cable.
  - b. For side power entry the bracket should be parallel to the angle of the cable.Turn two pieces of white expansion tubes through the mounting holes.  
Screw bracket in with 15mm screws for timber and 30mm screws for concrete surface.
2. Prepare fitting for mounting.
  - a. Stick the black EVA anti-vibration pads onto back surface of lamp.
  - b. Set desired colour temp with switch on side of fitting.
3. Wire the fitting
  - a. Open the connector block cover by squeezing two clips and flipping up cover
  - b. Peel back cables plastic insulation off 20mm. Connect the power to the Live and Neutral poles on the fast push terminal
  - c. Once wire is secure press waterproof cover down securely to create a tight seal.
4. Fix the fitting to the ceiling.

After completing wiring put excessive wire into the groove. Line up the bracket with the mounting point in the back of the fitting and push to click into place.



### Safety Instructions

Read these instructions carefully before commencing installation.

1. The light source contained in this luminaire shall only be replaced by the manufacturer or this service agent or a similar qualified person.
2. This LED luminaire must be installed by a licensed electrician ONLY following all local regulations.
3. Ensure that the cables will not be squeezed or damaged by sharp edges.
4. Clean the light with a soft cloth and a standard PH-neutral detergent.
5. Misuse of/or changes to the appliance shall void all warranties.
6. Do not install on a surface that is not suitable or deformed.
7. Do not install on or above a surface with a high temperature.
8. There should not be any materials that are corrosive, explosive.



For detailed specification, please go to our website [eurotechlighting.co.nz](http://eurotechlighting.co.nz)

**eurotech**  
lighting