

We'd love to hear from you. Scan with your Walmart app and let us know what you think.



386

The Fine Print

FCC Statement

This equipment has been tested and found to comply with the limits for a Class B digital device,pursuant to Part 15 of the FCC Rules. These limits are designed to provide reasonable protection against harmful interference in a residential installation. This equipment generates uses and can radiate radio frequency energy and, if not installed and used in accordance with the instructions, may cause harmful interference to radio communications.

However, there is no guarantee that interference will not occur in a particular installation. If this equipment does cause harmful interference to radio or television reception, which can be determined by turning the equipment off and on, the user is encouraged to try to correct the interference by one or more of the following measures:

- Reorient or relocate the receiving antenna.
- Increase the separation between the equipment and receiver.
- Connect the equipment into an outlet on a circuit different from that to which the receiver is connected.

The Fine Print

-- Consult the dealer or an experienced radio/TV technician for help.This device complies with part 15 of the FCC Rules. Operation is subject to the following two conditions:
(1) This device may not cause harmful interference, and (2) this device must accept any interference received, including interference that may cause undesired operation.

Warning:

Changes or modifications to this unit not expressly approved by the party responsible for compliance could void the user's authority to operate the equipment.

Need help? We're here for you every day from 7 a.m.-9 p.m. CST. Give us a call at 1-888-516-2630.

Produced for Walmart Inc.,
Bentonville,AR 72716

Ver.01 24/10/20 20/01/21

FCC ID : 2ADTV-24301

onn.™

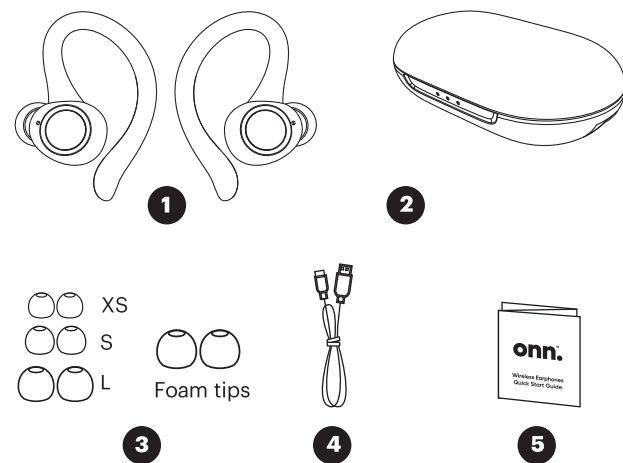
Wireless Earphones Quick Start Guide

Get to Know Your Wireless Earbuds

- 1) Model: AAABLK100024301
- 2) Speaker Diameter: 5.8mm
- 3) Speaker Impedance: 32Ω±15%
- 4) Sensitivity: 106±3dB at 1KHz
- 5) Speaker Driver Rating Power: 2mW
- 6) Charging Cable: 23cm
- 7) 48 hours of total playtime (with charging case)
- 8) IPX5 waterproof rating applies to the earphones, not to the charging case.

What's in the Box?

Check to make sure you have everything below



1. Earphones x1 pair
 2. Charging case x1
 3. Silicone eartips x4 pairs (M size installed), foam tips x1 pair
 4. USB-C charging cable x1
 5. Quick Start Guide x1
- (USB-C is a trademark of USB Implementers Forum,Inc.)

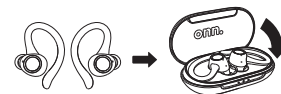
Let's Get Started!

On/Off & Pairing

01



Take them out to Power On automatically & connect to last paired device



Drop them back and close the charging case, Power Off automatically & disconnect to paired device

For the first time use, place both earphones back into charge case first and close the case. Then open the charging case, earphones will go into pairing mode, connect to your device by selecting "onn. TWS Sport In-Ear".



Press & Hold Each Side for Power On/Off (If you are carrying the earphones without charging case)



If you want to pair with another device, please turn Bluetooth Off on your last paired device if it is nearby, then open the charging case for pairing.

Enjoy Your Music

02



Part of **Android** users can further increase volume by pressing right side earphone two times even if your device is at maximum volume.



x2 Press
Decrease Volume



x2 Press
Increase Volume



Press & Hold 2s
Previous Track



x1 Press Each Side
Play / Pause



Press & Hold 2s
Next Track

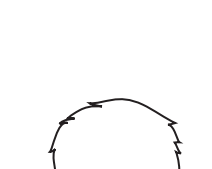
x3 Press Each Side
Siri / Google Assistant

Accepting a Call

03



x2 Press
Decrease Volume



x2 Press
Increase Volume



x1 Press Each Side
Answer



x1 Press Each Side
Hangup

Press & Hold Each Side 2s
Reject Incoming Call

Charge Your Earphones

04

Earphones charging

L/R earphone charging: The left or right LED light will pulse white, after 10 seconds the LED light will be off, but earphone is still charging until fully charged.



Case charging

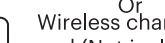
When the charging case is fully charged, 3 LED lights will be on.



⌚About 3 hours



Charging cable
Or
Wireless charging
pad (Not included)



5V 0.5A

