

CORE 10 Person Lighted Instant Cabin Tent
4.2 m x 3 m x 1.9 m / 14 ft x 10 ft x 6.5 ft

ITM. / ART. 1819504
Model #40413



Recommended...



2 People



Rubber Mallet



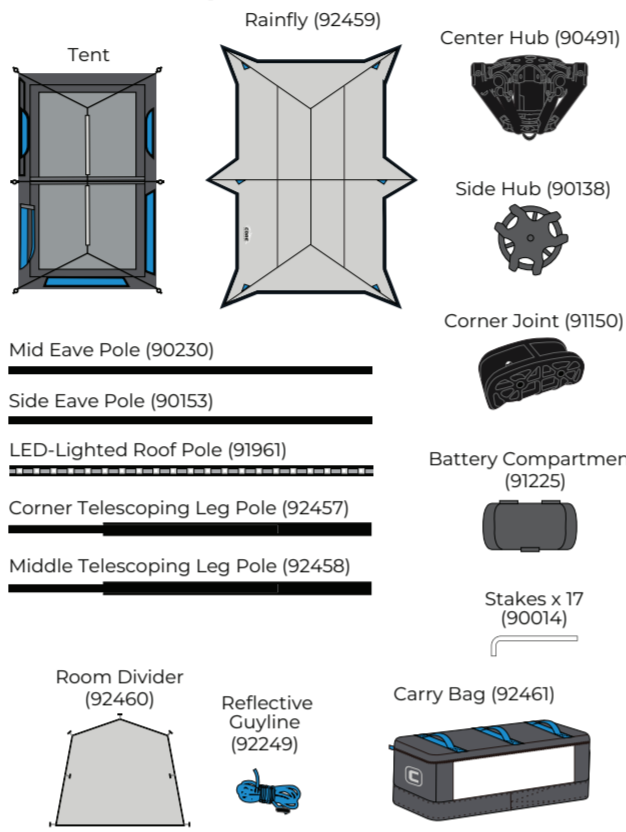
Level Area

Setup Tips

- For a comfortable night's rest, clear your camp area of debris before setting up your tent.
- When opening for the first time, the rainfly and room divider are rolled together with the tent body.
- Remove all protective cardboard and foam inserts around the center hub and side hubs before initial setup.
- Set up tent at home before getting to the campsite.
- Take a few extra moments to set up each section of your tent with care.

Tools shown are not included.

Contents & Repair Parts

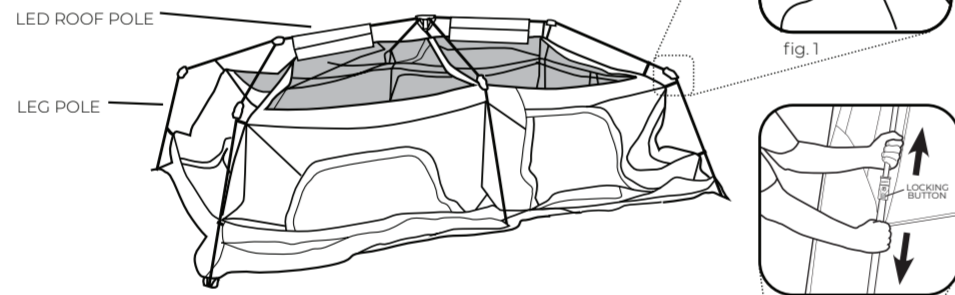


1 Prepare for Setup

- Select a level site clear of rocks, branches, and other hard or sharp objects, to set up your tent.
- Remove all contents from bag.
- Unfold (6) leg poles from the pod shape. Unfold legs again at joints, to lay tent flat. Center will stand up.

2 Lift Roof and Eave Poles

- NOTE: 2 people will be needed to erect and extend the tent poles.
- Lift up on corner joints until eave poles at 3-way side hubs are extended (fig. 1).
- Grab roof poles and pull straight out to create tent's cabin shape (leg poles will angle at joints to partially stand up).

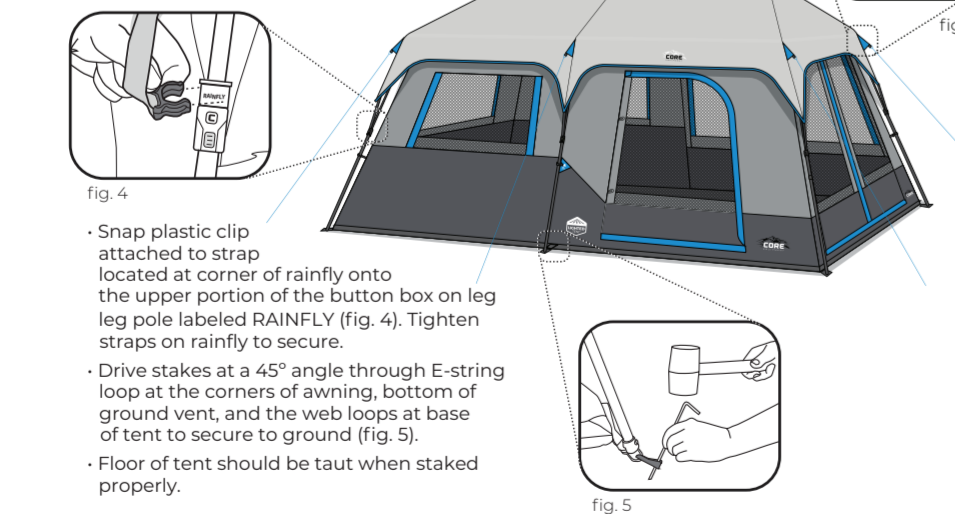


3 Extend Leg Poles

- NOTE: DO NOT extend telescoping poles until all legs and ceiling hubs are elevated.
- Extend each of the (6) leg poles until the locking buttons "click," and lock the poles into place (fig. 2).

4 Attach Rainfly and Stake Tent

- Drape rainfly over tent, placing "CORE"™ to the front side of tent with door.
- Attach hook-and-loop tab on the underside of the rainfly to each pole (fig. 3).



5 Secure Ground Vents and Guylines

- Locate guylines attached to the rainfly.
- Stake out each guyline at a 45 degree angle.
- Tighten guylines as needed by adjusting the slider up the cord.
- Stake out ground vents on either side of tent (where air intake graphics are).

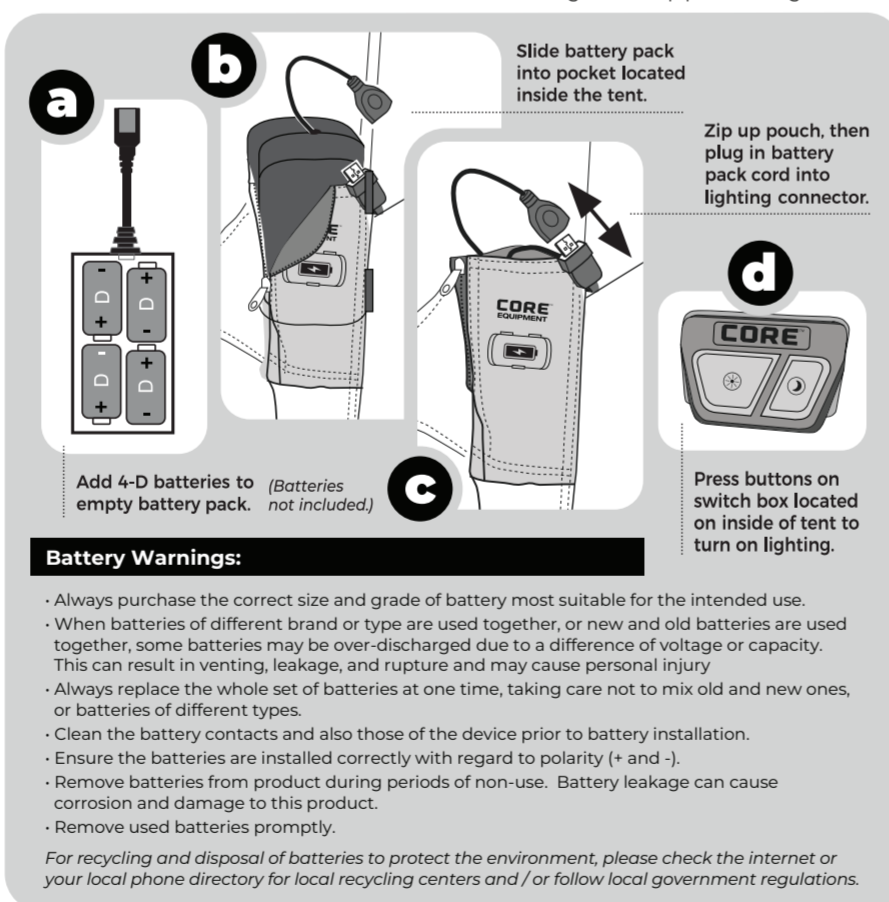


6 Install Room Divider

- NOTE: The divider curtain provides extra privacy in your tent.
- To install it, attach divider's plastic toggles to corresponding loops on the wall inside the tent (fig. 7).

Lighting Component

- NOTE: Pressing the "NIGHT LIGHT" button activates amber-colored lights to help preserve night vision.



Battery Warnings:

- Always purchase the correct size and grade of battery most suitable for the intended use.
- When batteries of different brand or type are used together, or new and old batteries are used together, some batteries may be over-discharged due to a difference of voltage or capacity. This can result in venting, leakage, and rupture and may cause personal injury.
- Always replace the whole set of batteries at one time, taking care not to mix old and new ones, or batteries of different types.
- Clean the battery contacts and also those of the device prior to battery installation.
- Ensure the batteries are installed correctly with regard to polarity (+ and -).
- Remove batteries from product during periods of non-use. Battery leakage can cause corrosion and damage to this product.
- Remove used batteries promptly.

For recycling and disposal of batteries to protect the environment, please check the internet or your local phone directory for local recycling centers and / or follow local government regulations.

CAUTION: USB is not compatible with charging external device.
IMPORTANT: Remove battery pack before taking down tent. Failure to do so will drain the batteries and possibly damage the tent fabric.

(continued on back)

Take Down Instructions:

- Leave door unzipped during take down to allow air to escape.
- Remove stakes from tent and guylines. Store in stake bag.
- Detach rainfly and fold into thirds lengthwise and place at the bottom of the carry bag.
- Uninstall room divider and place in carry bag.
- Remove battery pack for storage.
- Unlock the (6) telescoping leg poles and push down on the side hubs to collapse poles.
- Fold all of the collapsed poles toward the center of the tent.
- Gather folded tent poles and fabric into the center to form a pod.
- Place tent on top of folded room divider and rainfly. The weight of the tent will help remove any air from the rainfly.
- Place the battery pack in a secure location to prevent any damage.

Frequently Asked Questions:

- Are replacement parts available?** Yes, email Customer Service at help@coreequipment.com for replacement parts. All parts can be replaced.
- How do I get everything back in the bag?** The trick is to take your time and remove all the air. Use the weight of the poles to roll the tent on the ground and force air out.
- How to clean the tent?** Clean the tent with a soft sponge, mild soap and tepid water. Be sure to scrub gently and remove all soap. Let it dry in sunlight, which also naturally cleans the tent.
- What is the wall plug symbol?** That is a port for an electrical cord to access your tent. The electrical cord can be used on a campsite with power or with a generator outside your tent. It closes fully when not in use.
- Can the tent be used in the rain?** Absolutely. The tent and rainfly have a water resistant treatment, and the seams have been sealed with water resistant tape at the factory.
- How many seasons is this tent?** This is a 2-3 season tent, not recommended for use in severe weather conditions.
- What are the dimensions of the tent?** The tent is 4.2 m x 3 m x 1.9 m (14 ft x 10 ft x 6.5 ft).

Warnings and Cautions:

WARNING: KEEP ALL FLAME AND HEAT SOURCES AWAY FROM THIS TENT FABRIC
This tent is made of flame-resistant fabric which meets CPAI-84 specifications. **IT IS NOT FIREPROOF.** The fabric will burn if left in continuous contact with any flame source. The application of any foreign substance to the product fabric may render the flame-resistant properties ineffective.

DO NOT use fuel burning devices inside or near tent materials.

DO NOT permit children to light matches, operate burning appliances or handle any flame sources in or near the tent.

- Do not smoke, use matches, candles or open flames of any kind in or near the tent.
- Do not refuel lanterns, stoves or heaters inside tent.
- Do not cook inside tent.
- Do not store flammable liquids inside tent.

WARNING: Keep clear of overhead power lines.

- Do not set up your tent under trees because of potential lightning strikes or falling tree limbs in inclement weather.
- For best results in windy conditions, position narrow end of tent into the wind.
- Secure with all stakes and guylines provided to prevent property damage or personal injury.

(continued, next column)

Warnings and Cautions, Continued:

- Under certain conditions (cold weather, high humidity, etc.) condensation will form on the inside of your tent. Condensation is caused by water vapor from your breath, perspiration or any wet clothing inside the tent. It is NOT LEAKAGE through the tent fabric. It can be minimized by removing wet clothing from your tent and by providing good ventilation throughout the tent. Never store the tent, even for a short period of time, without drying it thoroughly and brushing off caked dirt.
- Do not pack stakes inside your tent. Use a separate storage bag.
- STAKES SHOULD BE REMOVED BY PULLING ON THE STAKE ITSELF. NEVER PULL ON THE TENT TO REMOVE STAKE.
- Do not leave your tent set up for weeks at a time. Be aware that exposure to ultraviolet rays from the sun can seriously damage material and/or cause it to become discolored.



DO NOT SPRAY!

IMPORTANT:

THE ORIGINAL FIRE RETARDANT AND WATER-REPELLENT PROTECTIVE COATINGS MAY BE COMPROMISED IF SPRAYS OR OTHER CHEMICAL TREATMENTS ARE USED ON THE TENT. FABRIC HAS BEEN FACTORY TREATED. IT IS HIGHLY WATER-REPELLENT; HOWEVER, IT IS NOT WATERPROOF. ALL TENTS CAN EXPERIENCE SEAM LEAKAGE DURING WET WEATHER. IF YOU WANT ADDITIONAL MOISTURE PROTECTION, TRY A SEAM SEALING COMPOUND ONLY; STRICTLY FOLLOW THE MANUFACTURER'S DIRECTIONS. IT IS RECOMMENDED THAT YOU SEAL THE TENT DURING THE INITIAL SETUP AS WELL AS PRIOR TO EACH CAMPING SEASON. SEAM SEALER COMPOUNDS CAN BE PURCHASED AT YOUR LOCAL CAMPING PRODUCTS OUTLET. FOR MISSING PARTS EMAIL HELP@COREEQUIPMENT.COM.

PRIOR TO RETURNING TO STORE,
PLEASE CONTACT CUSTOMER SERVICE TO RESOLVE THE ISSUE.

Distributed by: Costco Wholesale Corporation P.O. Box 34535 Seattle, WA 98124-1535 USA 1-800-774-2678 www.costco.com	Costco Wholesale Canada Ltd.* 415 W. Hunt Club Road Ottawa, Ontario K2E 1C5, Canada 1-800-463-3783 www.costco.ca	Importador por: Importadora Primex S.A. de C.V. Blvd. Magnocentro No. 4 San Fernando La Herradura Huixquilucan, Estado de México C.P. 52765 RFC: IPR-930907-S70 (55)-5246-5500 www.costco.com.mx
Costco Wholesale Japan Ltd. 2 Kakuchi, 2 Gaiku, Kaneda-Nishi 361 Urakura, Kisarazu shi Chiba, 292-0007 Japan 0570-200-800 www.costco.co.jp	Costco Wholesale Korea, Ltd. 40, Iljik-ro Gwangmyeong-si Gyeonggi-do, 14347, Korea 1899-9900 www.costco.co.kr	Costco (China) Investment Co., Ltd. Room 01 Mezzanine No. 5178, Kang Xin Highway Pudong New District Shanghai China 201315 +86-21-6257-7065
Costco Wholesale UK Ltd / Costco Online UK Ltd Hartspring Lane Watford, Herts WD25 8JS United Kingdom 01923 211313 www.costco.co.uk	Costco France 1 avenue de Bréhat 91140 Villebon-sur-Yvette France 01 80 45 01 10 www.costco.fr	Costco Wholesale New Zealand Limited 2 Gunton Drive Westgate Auckland 0814 New Zealand www.costco.co.nz
Costco Wholesale Spain S.L.U. Polígono Empresarial Los Gavilanes C/ Agustín de Betancourt, 17 28906 Getafe (Madrid) España NIF: B86509460 900 111 155 www.costco.es	Costco Wholesale Sweden AB Box 614 114 11 Stockholm Sweden www.costco.se	Costco Wholesale Australia Pty Ltd 17-21 Parramatta Road Lidcombe NSW 2141 Australia www.costco.com.au Costco Wholesale Iceland ehf. Kauptún 3-7, 210 Gardabaer Iceland www.costco.is



Elevate LLC
Overland Park, KS 66223

Made in Bangladesh

Revised 7/01/2024

STITCH LINE