



LED Industrial Lighting

Efficient lighting, Smart control, Extreme reliability



Linear

- 01 | [AMBIS RADIANT](#)
- 02 | [AMBIS with Control](#)
- 03 | [AMBIS Parking](#)
- 04 | [AMBIS INDUSTRIAL](#)
- 05 | [AMBIS SENSOR](#)
- 06 | [ALTOS TUBULAR](#)
- 07 | [ALTOS TUBULAR AMBER](#)

High Bay

- 08 | [LEGATTO-SCD](#)
- 09 | [LEGATTO-SBD](#)
- 10 | [STACCATO](#)
- 11 | [CERRATTO](#)
- 12 | [TUNETTO](#)

Street Light

- 13 | [GRIDLIT Series](#)

Fishing Light

- 14 | [Fishing Light Series](#)

- 16 | [Success Stories](#)

Delta Advantages

Advanced technology

- Power Electronics (World's No.1 power supply provider)
- Computer-Aided Engineering (CAE) for thermal, structure, and optical design.

Outstanding quality and reliability

- Systematic optimization from design (LED, optics, thermal, structure, and drivers) to manufacturing.
- Quality assurance for design, materials, and manufacturing

Dedicated sourcing

- Own factory with dedicated materials sourcing team

Worldwide service

- Delta Group has worldwide sales and manufacturing sites
- Lighting simulation services



Industrial Lighting

Delta provides a perfect combination of **HIGH ILLUMINATION**, **MINIMUM MAINTENANCE** and **EXTREME RELIABILITY**.

As a global leader in electrical power and environmental sustainability, Delta is spearheading innovative and environmentally progressive solutions for today's manufacturing facilities.

15M above



Tunetto Series

High lumen output for high ceiling warehouses or applications.

10-15M



Staccato Series

High efficacy and robust design for harsh environments up to 75 °C

8-10M



Legatto Series

Easy to integrate with control systems in warehouses.

5-8M



Cerratto Series

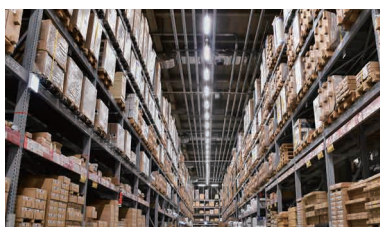
Value for money design for any application.

3-5M



Ambis Series

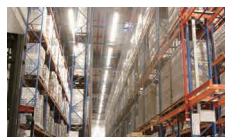
Supports smart control with easy installation for production lines or parking lots.



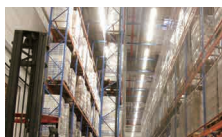


AMBIS RADIANT

Light weighted luminaire with elegant illumination



Warehouse



Production line



Food industry



Refrigerated warehouse

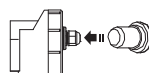
Product features

- Easier and more convenient installation with easy-click fixation and pressfit electrical block
- Excellent uniform & comfortable wide beam light distribution thanks to a unique design
- Trough wiring standard version
- 5 years warranty
- Unconditional usage 24 hours per day
- Extended operating temperatures from -30°C to +40°C
- Lifetime up to 50,000 hours (L80/B10)

Technical specifications

	PG419ILF1N	PG430ILF1N	PG545ILF1N	PG556ILF1N	PG566ILH1N	PG577ILH1N
Lumen output	2,500 lm	4,000 lm	6,000 lm	7,500 lm	9,000 lm	11,000 lm
Power (W)	19	30	45	56	66	77
Efficacy (lm/W)	132	133	133	134	136	142.9
CRI	>80					
CCT (K)	4,000					
Input voltage	220-240V					
Power factor	>0.9					
Operating temp	Ta: -30~40°C					
Lifetime	50,000 hrs					
Max. luminaires in one loop (10A ABB MCB s200 series)	64	33	24	22	21	18
Sensor options	MA-03012E					
Max. luminaires with one sensor	21	13	8	7	6	5
Product variation (mm)	1,200	1,200	1,600	1,600	1,600	1,600
Emission length	1,000	955	1,355/1,400	1,355/1,355	1,355	1,355
Weight (kg)	1	1	1.4	1.4	1.6	1.6
Electrical protection class	Class II					
Remarks	Other CCT available: 3,000K: -8% of 4,000K lumen output, 5,000K & 5,700K: the same lumen output as 4,000K					

Accessories



Sealing plug 1 pc per luminaire
(for sealing the cable at the end
luminaire in installation circuit)

MA-030STD



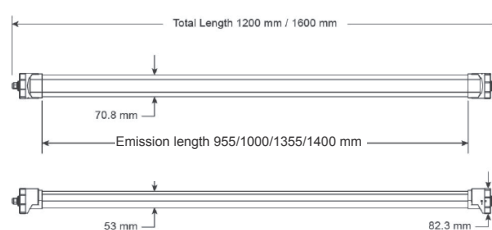
Mounting clips
2 pcs per luminaire

MA-030NTV

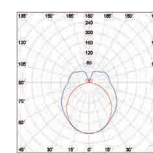


Optional: Anti-vandalism SS316L
mounting clips (set of 2 pcs)

Dimensions & light patterns

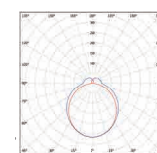


PG419ILF1N / PG430ILF1N PG545ILF1N / PG556ILF1N



Horizontal: 110° Vertical: 158°

PG566ILH1N PG577ILH1N



Horizontal: 110° Vertical: 127°

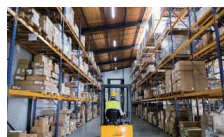


AMBIS with Control

Advanced energy saving with smart control



Parking garage



Warehouse



Production line



Factory

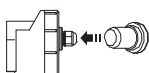
Product features

- Integrated control system 1-10V or Dali using external presence detection
- Control system bluetooth mesh 5.0 protocol
- Flexible setting of luminaires controlled groups and area
- Presence detection and day light sensor with or without luminous flux
- Excellent visual comfort and uniformity of light thanks to a unique design
- 5 years warranty; Unconditional usage 24 hours per day
- Extended operating temperatures from -20°C to +40°C
- Lifetime up to 50,000 hours (L80/B10)

Technical specifications

	PG550IEH1D	PG445IEH1L	PG432IEH1L	PG443IEH1B	PG545ILH1N-M60S	PG445IEH1L-M77V
Lumen output	6,250 lm	6,000 lm	4,000 lm	5,100 lm	6,000 lm	6,000 lm
Power (W)	50	45	32	43	45	45
Efficacy (lm/W)	125	133	125	119	133	133
CRI	>80					
CCT (K)	4,000					
Input voltage	220-240V					
Power factor	>0.9					
Operating temp	Ta: -20~40°C					
Lifetime	50,000 hrs					
Max. luminaires in one loop (10A ABB MCB s200 series)	15	24	12	12	5	8
Sensor options	N/A	MA-04912E MA-05212E	MA-04912E MA-05212E	N/A	Built-in on/off sensor	Built-in dimming sensor
Control	DALI 1.0	1-10V	1-10V	BLE	FIX	1-10V
Product variation (mm)	1,600	1,200	1,200	1,200	1,600	1,200
Weight (kg)	1.7	1.2	1.3	1.3	1.6	1.3
Electrical protection class	Class II					
Remarks	Other CCT available: 3,000K: -8% of 4,000K lumen output, 5,000K & 5,700K: the same lumen output as 4,000K					

Accessories



Sealing plug 1 pc per luminaire
(for sealing the cable at the end
luminaire in installation circuit)

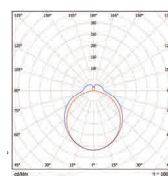
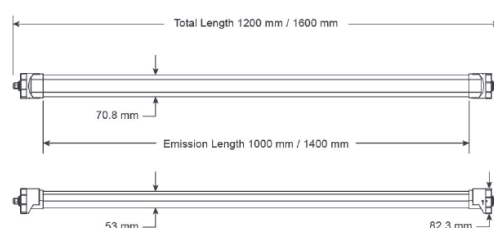
MA-030STD

Mounting clips
2 pcs per luminaire

MA-030NTV

Optional: Anti-vandalism SS316L
mounting clips (set of 2 pcs)

Dimensions & light patterns



Horizontal: 110° Vertical: 127°



AMBIS Parking

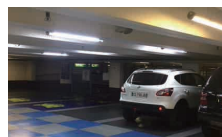
Energy saving with better lighting



Parking garage



Parking garage



Parking garage



Parking garage

Linear

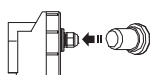
Product features

- Easier and more convenient installation with easy-click fixation and pressfit electrical block
- Excellent visual comfort
- Unique photometric design with a 280° emission adapted to parking application with an excellent uniformity
- Trough wiring standard version
- 5 years warranty; Unconditional usage 24 hours per day
- Extended operating temperatures from -30°C to +40°C
- Lifetime up to 50,000 hours (L80/B10)

Technical specifications

	PG422IL01N	PG438IL01N	PG538IL01N
Lumen output (lm)	3,000	5,100	5,100
Power (W)	22	38	38
Efficacy (lm/W)	136	134	134
CRI		>80	
CCT (K)		4,000	
Input voltage		220-240V	
Power factor		>0.9	
Operating temp		Ta: -30~40°C	
Lifetime		50,000 hrs	
Max. luminaires in one loop (10A ABB MCB s200 series)	64	32	32
Sensor options		MA-03012E	
Max. luminaires with one sensor	18	10	10
Product variation (mm)	1,200	1,200	1,600
Weight (kg)	1	1	1.3
Electrical protection class		Class II	
Remarks	Other CCT available: 3,000K: -8% of 4,000K lumen output, 5,000K & 5,700K: the same lumen output as 4,000K		

Accessories



Sealing plug 1 pc per luminaire
(for sealing the cable at the end
luminaire in installation circuit)

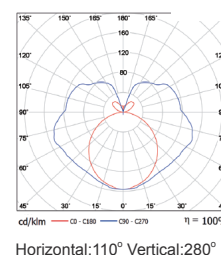
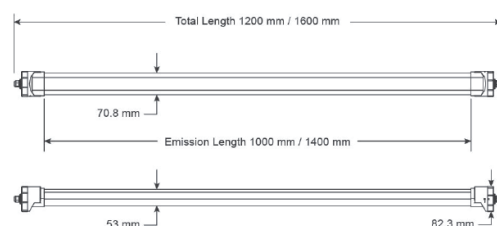
MA-030STD

Mounting clips
2 pcs per luminaire

MA-030NTV

Optional: Anti-vandalism SS316L
mounting clips (set of 2 pcs)

Dimensions & light patterns





AMBIS INDUSTRIAL

Ultimate reliability with low maintenance



Parking garage



Refrigerated warehouse



Warehouse



Production line

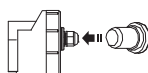
Product features

- Robust luminaire IK10 & IP66 with electrical protection
- Through-wiring 3x2.5mm² with 3 pole L/N/PE connections
- Extended operating temperatures from -30°C to +40°C
- Lifetime up to 50,000 hours (L80/B10)
- 5 years warranty
- Unconditional usage 24 hours per day
- Easier and more convenient installation with easy-click fixation and pressfit electrical block
- Excellent uniform & comfortable wide beam light distribution thanks to a unique design

Technical specifications

	PG430IEG1N	PG530IEG1N	PG545IEG1N	PG556IEG1N	PG566IEH1N
Lumen output	4,000 lm	4,000 lm	6,000 lm	7,500 lm	9,000 lm
Power (W)	30	30	45	56	66
Efficacy (lm/W)	133	133	133	134	136
CRI	>80				
CCT (K)	4,000				
Input voltage	220-240V				
Power factor	>0.9				
Operating temp	Ta: -30~40°C				
Lifetime	50,000 hrs				
Max. luminaires in one loop (10A ABB MCB s200 series)	33	33	24	22	21
Sensor options	MA-03012E				
Control	13	13	8	7	6
Product variation (mm)	1,200	1,600	1,600	1,600	1,600
Weight (kg)	1	1.4	1.5	1.5	1.6
Electrical protection class	Class II				
Remarks	Other CCT available: 3,000K: -8% of 4,000K lumen output, 5,000K & 5,700K: the same lumen output as 4,000K				

Accessories



Sealing plug 1 pc per luminaire
(for sealing the cable at the end
luminaire in installation circuit)

MA-030STD



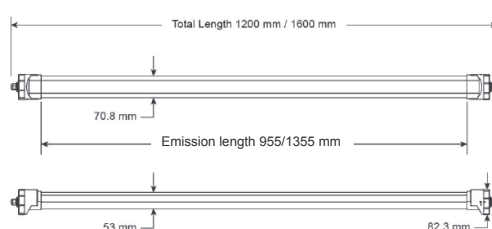
Mounting clips
2 pcs per luminaire

MA-030NTV

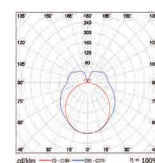


Optional: Anti-vandalism SS316L
mounting clips (set of 2 pcs)

Dimensions & light patterns

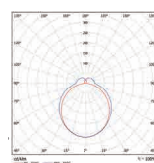


PG430IEG1N / PG545IEG1N PG530IEG1N / PG556IEG1N

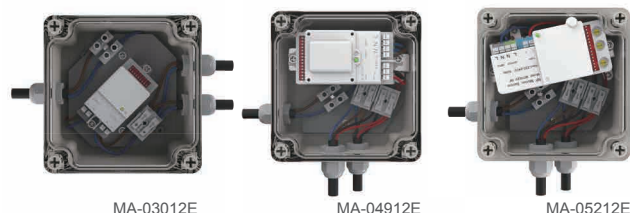


Horizontal:110° Vertical:140°

PG566IEH1N



Horizontal:110° Vertical:127°



AMBIS SENSOR

Energy saving with smart control

Linear

Product features

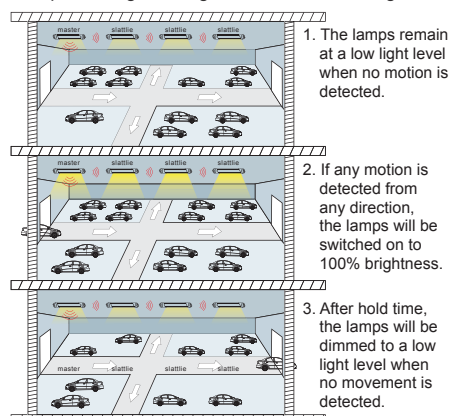
- External occupancy sensor and daylight sensor
- Easier installation without additional wiring; Microwave technology
- IP66 junction box with two output cable glands
- Setting detection levels configured by DIP Switches
- Wall mounted or ceiling mounted installation

Technical specifications

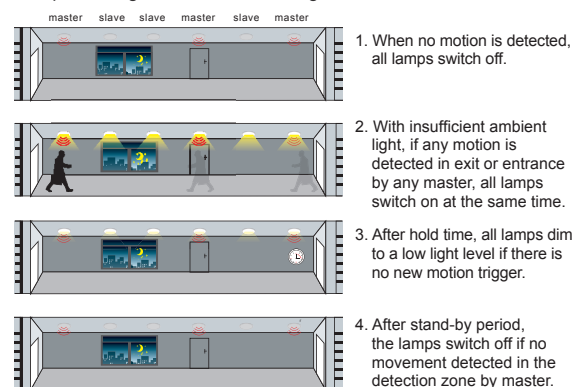
	MA-03012E	MA-04912E	MA-05212E
Microwave Frequency	5.8GHz		
Function	on/off	Step dimming	Step dimming 868MHz transceiver for grouping
Application	Corridor, stairwell, restroom courtyard or doorway	Car park, gas station, warehouse	
Efficacy (lm/W)	220-240V		
Rated load (w)	400	800	400
Detecting radius (m) mounting height by 3 meters	4-6	5-8	5-8
Mounting height (m)	Max. 6	Max. 12	Max. 15
Motion detection	0.5~3m/s		
Detection angle	150° (wall) / 360° (ceiling)		
Operating temperature	-25~60°	-35~70°	-25~60°
Detection sensitivity	10%/25%/50%/75%/100%	10%/50%/75%/100%	25%/50%/75%/100%
Hold time	5s/30s/90s/3m/20m/30m	5s/30s/90s/3m/20m/∞	5s/30s/90s/3m/20m/30m/∞
Daylight sensor (lux)	2/10/25/50/Dsiable	2/5/10/25/50/100/Disable	5/15/30/50/100/150/Disable
Stand-by period	N/A	0s/5s/5m/10m/30m/1h/∞	0s/5s/5m/10m/30m/60m/
Stand-by dimming level	N/A	10%/20%/30%/50%	10%/20%/30%/50%
Grouping	N/A	N/A	1TX & 2RX, 16 channels
RF. Transmission distance (m)	N/A	N/A	Max.30
Dimensions	Box (L x W x H) 125 x 125 x 75mm, Cable gland 20mm		

Grouping application

2-step dimming : Saving mode → On → Saving mode



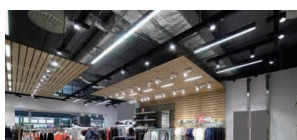
3-step dimming : Off → On → Saving mode → Off





ALTOS TUBULAR

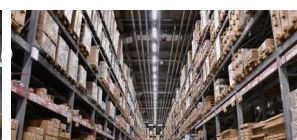
Unique industrial design efficient lighting



Retail store



Factory



Warehouse

Linear

Product features

- Elegant tubular design with stainless steel end cap
- IP69K and IK10 protection for regular cleaning
- Multi option luminaire: covers option, lengths, CCT option or different control system: Dali, 1-10V
- Suspended or ceiling mounted
- Reliable luminaire warranty 5 years
- Lifetime up to 50,000 hours (L70/B50)

Technical specifications

	D04TUB2240 D04TUBR2240	D04TUB4340 D04TUBR4340	D04TUB5440 D04TUBR5440
Lumen output	2,400 / 3,000 lm	4,320 / 5,400 lm	5,760 / 7,200 lm
Power (W)	20	36	48
Efficacy (lm/W)	120 / 150		
CRI	>80		
CCT (K)	4,000		
Input voltage	220-240V		
Power factor	>0.9		
Operating temp	Ta: -20~50°C		
Lifetime	50,000 hrs		
Sensor options	MA-03012E		
Max. luminaires with one sensor	20	11	8
Product variation (mm)	600	1,200	1,500
Weight (kg)	1.0	1.7	2.0
Electrical protection class	Class I		
Remarks	Other CCT available: 3,000K ; 5,000 ; 6,500K		
Accessories	standard: 2pcs metal bracket, optional: 2pcs steel cable		

Accessories

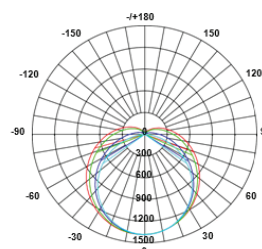
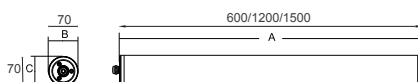
D04TUB0001
Suspension rope 2Pcs/Set



D04TUB0002
Anti-vandalism bracket 2Pcs/Set



Dimensions & light patterns



Average beam angle (50%): 125.4DEG



ALTOS TUBULAR AMBER

Unique industrial design efficient lighting



Wine cellar

Linear

Product features

- Elegant tubular design with stainless steel end cap
- Ideal for wine cellar application. No blue emission, No UV emission
- IP69K & IK10 design ideal for regular cleaning
- Unique solution for sodium lamps replacement
- Suspended or ceiling mounted
- 3 standard sizes (600, 1200, 1500mm)
- Operating range -20°C to +35°C

Technical specifications

	D04TUB220-A	D04TUB430-A	D04TUB540-A
Lumen output	800 lm	1,440 lm	1,920 lm
Power (W)	20	36	48
Efficacy (lm/W)		40	
CRI		N/A	
Wavelength		595-600 nm	
Input voltage		220-240V	
Power factor		>0.9	
Operating temp		Ta: -20~35°C	
Lifetime		50,000 hrs	
Sensor options		N/A	
Max. luminaires with one sensor		N/A	
Product variation (mm)	600	1,200	1,500
Weight (kg)	1.0	1.7	2.0
Electrical protection class		Class I	
Remarks		N/A	
Accessories	standard: 2pcs metal bracket, optional: 2pcs steel cable		

Accessories

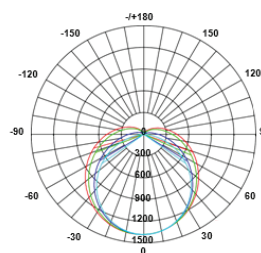
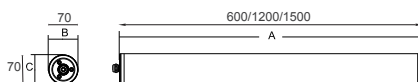
D04TUB0001
Suspension rope 2Pcs/Set



D04TUB0002
Anti-vandalism bracket 2Pcs/Set



Dimensions & light patterns



Average beam angle (50%): 125.4DEG



High Bay

LEGATTO-SCD

Highly integrated for smart control



Factory



Gymnasium



Distribution center



Warehouse

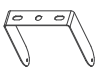




Product features

- IP65 - IK10
- HB luminaire provides excellent compromise on cost / specifications
- Operating temperature between -40°C and 55°C
- Wide or medium beam angle with reduced glare UGR <22
- 0-10V control interface (standard) and DALI (optional)
- Compatible with Nedap IoT connected module for wireless control
- Standalone module with PIR DC detection and daylight regulation
- 5 year warranty
- Lifetime up to 100,000 hours (L80/B10)
- Thermal control function to reduce the luminous flux when the temperature is above the maximum limit
- Many optional accessories (bracket, diffuser, reflector)

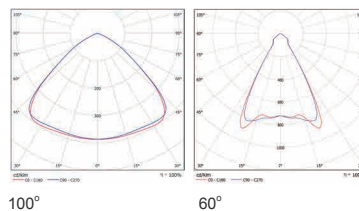
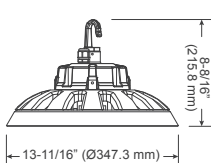
Technical specifications

	SCDB84H00E	SCDB84600E	SCDBD4H00E	SCDBD4600E	SCDBI4H00E	SCDBI4600E
Lumen output	12,400 lm	11,400 lm	18,300 lm	16,900 lm	21,900 lm	20,200 lm
Power (W)	85	85	130	130	160	160
Efficacy (lm/W)	146	134	141	130	137	126
CRI	>80					
CCT (K)	4000					
Input voltage	220-240V					
Optics	100°	60°	100°	60°	100°	60°
Power factor	>0.9					
Operating temp	Ta: -40~55+°C					
Lifetime	L80/B10 >100,000 hrs					
Mounting	Hook / Wall mount / Pendant					
Control	Interface: 0-10V					
Weight (kg)	3.5					
Remarks	Other CCT available: 5,000K: + 8% of 4,000K lumen output 3,000K: - 8% of 4,000K lumen output					
Option	DALI					

Accessories

U-Bracket MA-01021A	Occupancy sensor MA-01012A	DC controller MA-01014A	Diffuser MA-01018A	Acrylic reflector MA-01016A
				

Dimensions & light patterns





High Bay

LEGATTO-SBD

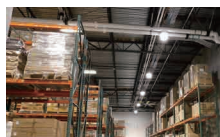
Highly integrated for smart control



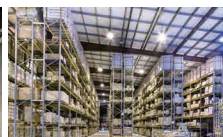
Factory



Gymnasium



Distribution center



Warehouse

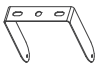




Product features

- IP65 - IK10
- HB luminaire provides excellent compromise on cost / specifications
- Operating temperature between -40°C and 60°C
- Wide or medium beam angle with reduced glare UGR <21
- 0-10V control interface (standard) and DALI (optional)
- Compatible with Nedap IoT connected module for wireless control
- Standalone module with PIR DC presence detection and daylight regulation
- 5 year warranty
- Lifetime up to 100,000 hours (L80/B10)
- Thermal control function to reduce the luminous flux when the temperature is above the maximum limit
- Many optional accessories (bracket, diffuser, reflector)

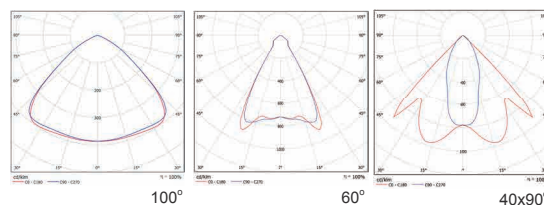
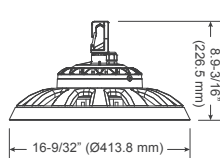
Technical specifications

	SBDBH4H00E	SBDBH4600E	SBDBN4H00E	SBDBN4600E	SBDBO4H00E	SBDBO4600E	SBDBE4A40E	SBDBG4A40E	SBDBJ4A40E
Lumen output	25,300 lm	23,300 lm	29,900 lm	27,500 lm	35,800 lm	32,900 lm	18,900 lm	22,900 lm	25,800lm
Power (W)	170	170	210	210	260	260	135	165	165
Efficacy (lm/W)	149	137	142	131	138	127	140	139	127
CRI	>80								
CCT (K)	4,000								
Input voltage	220-240V								
Optics	100°	60°	100°	60°	100°	60°	40°x90°		
Power factor	>0.9								
Operating temp	Ta: -40~60+°C								
Lifetime	L80/B10 >100,000 hrs								
Mounting	Hook / Wall mount / Pendant								
Control	Interface: 0-10V								
Weight (kg)	4.5								
Remarks	Other CCT available: 5,000K: + 8% of 4,000K lumen output 3,000K: - 8% of 4,000K lumen output								
Option	DALI								

Accessories

U-Bracket MA-01022A	Occupancy sensor MA-01012A	DC controller MA-01014A	Diffuser MA-01020A	Acrylic reflector MA-01019A
				

Dimensions & light patterns





STACCATO

Robust design to withstand harsh conditions



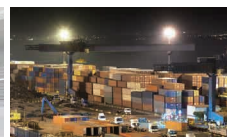
Refrigerated warehouse



Heavy industry



Maintenance hangar



Cargo wharf

High Bay

Product features

- IP66 - IK10
- Robust luminaire, ideal for harsh environments
- Operating temperature up to 65°C
- Wide or medium beam angle with reduced glare UGR <24
- 1-10V control interface (standard) and DALI (optional)
- Standalone module with PIR DC detection and daylight regulation
- Compatible with Nedap IoT connected module for wireless control
- 10kV surge protection
- Excellent efficacy up to 171lm/w
- Various beam angles 100°, 60°, 65° x110° and optical accessories guaranteeing visual comfort
- 5 years warranty
- Lifetime up to 100,000 hours (L80/B10)

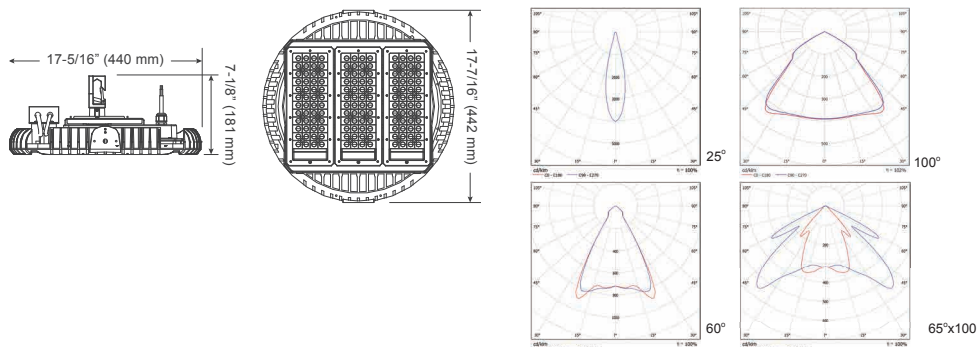
Technical specifications

	HBEB85H01E	HBEB5H01E	HBEBF5H01E	HBEBK5H01E	HBEBR5H01E
Lumen output	13,600 lm	19,500 lm	25,700 lm	32,100 lm	42,400 lm
Power (W)	85	125	150	200	260
Efficacy (lm/W)	160	156	171	161	163
CRI	>80				
CCT (K)	5,000				
Input voltage	220-240V				
Optics	100°				
Power factor	>0.95				
Operating temp	Ta: -40~65+°C				
Lifetime	L80/B10 >100,000 hrs				
Mounting	Hook / Wall mount / Pendant				
Weight (kg)	8.5	8.5	9	9	9
Remarks	Other CCT available: 4,000K: -8% of 5,000K lumen output, 3,000K: -16% of 5,000K lumen output Other optics available: 60°, 65°x100° Product codes and lumen output ranges are subject to change when other CCT or optics apply				

Accessories

U-Bracket MA-01002A	Acrylic Reflector MA-01001A	Diffuser MA-01004A	Tempered-Glass MA-01006A	Occupancy sensor MA-01005A	DC controller MA-01014A

Dimensions & light patterns





CERRATTO

Light weighted with high performance



Factory



Gymnasium



Exhibition hall



Warehouse

Product features

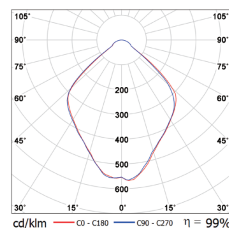
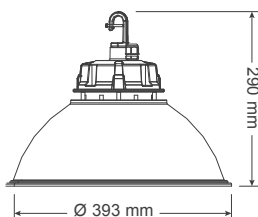
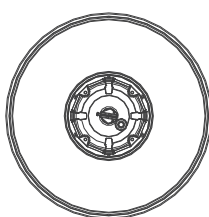
- IP65-IK08
- HB luminaire provides excellent compromise on cost / specifications
- Operation temperature between -40°C and 50°C
- Medium beam angle with reduced glare UGR<18
- 0-10V control interface (standard) and DALI (optional)
- 5 years warranty
- Lifetime up to 95,000 hours (L80/B10)
- Thermal control function to reduce the luminous flux when the temperature is above the maximum limit

Technical specifications

	LCDBF5900x	LCDBF4900x	LCDBD5900x	LCDBD4900x	LCDB85900x	LCDB84900x
Input voltage (Vac)	120-277					
CRI	>80					
CCT (K)	5000	4000	5000	4000	5000	4000
Lumen output (lm)	21,700	20,900	19,100	18,400	12,500	12,000
Efficacy (lm/W)	140	135	147	142	147	141

- Mounting: Hook, wall mount and pendant

Dimensions & light patterns





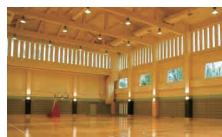
High Bay

TUNETTO

Extremely high lumen output



Factory



Gymnasium



Maintenance hangar



Exhibition hall

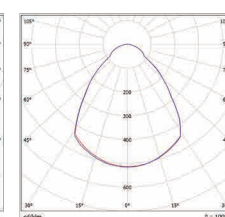
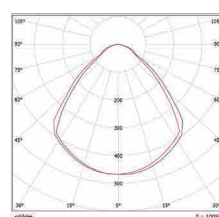
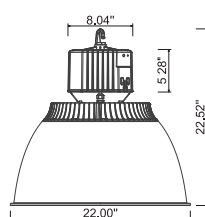
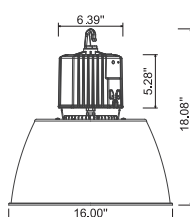
Product features

- Combines the traditional round look of HID high bay with the classic driver housing creating an unparalleled aesthetic design.
- Exceeds 135lm/watt with excellent driver powered by Delta.
- Provides many lumen options for "true up light" with powerful one-piece integrated designs that exceed the DLC premium requirement.
- Options include high efficiency premium acrylic reflectors for maximum durability and photometric performance.
- With lumen packages from 20,000 through 66,000 in the classic series has replacement options for 1000W through 250W HID applications.

Technical specifications

	HFFB19B85012	HFFB53A75027
Type of construction	65C=IP65 Classic	
Delivered light output	Up to 26,000 lumen	Up to 75,000 lumen
Input power (w)	Up to 186	Up to 530
Weight (lbs)	14	22
CRI	8=83+	7=70+
CCT (°K)	5000 / 4000	5000
Power source	Electronic driver powered by Delta	
Input voltage (Vac)	120-277	
Beam spread	95°	
Limited warranty	5 years	
Mounting	Hook, 18/3 5' SJO cord with connector	
Dimming (v)	0-10 standard	
Listing	cUL Listed, DLC approved	
LED lifespan L70	100,000 hrs	
Controls	D=0-10V, Z=Zigbee Transceiver, S4=Wireless sensor 40'	
Accessories	W=Wireguard, F=Flat lens, C=Conical drop lens, B=Clamp band	
Optic	L=Aluminum, A=Acrylic	L=Aluminum
Kelvin	40=4000K, 50=5000K	50=5000K
Lumen package	26D	75D

Dimensions & light patterns





GRIDLIT Series

Foundation for smart cities



Sidewalk



Industrial area



Roadway



Parking lot

Product features

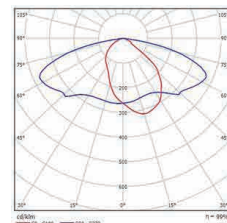
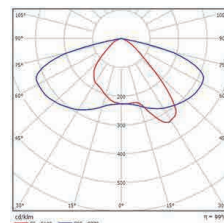
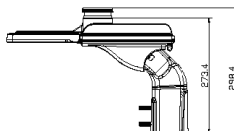
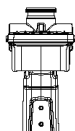
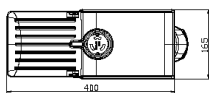
- High efficiency for optimized outdoor lighting requirements
- Modularized design in optics, thermal dissipation and electrical components for easy upgrade
- Selections of light distribution and color temperature to fulfill diverse requests
- Life span of LEDs used in the luminaire shall be more than 50,000 hours at 70% light output
- All series meet ANSI C136.31 (3G) vibration requirement
- Installation angle can be tilted by -15°, -10°, -5°, 0°, 5°, 10°, 15° with side entry & 0°, 5°, 10°, 15° with post top
- Installation without the use of additional tools
- Tempered glass min IK08 standard or equivalent
- Automatic shutdown when opening the lamp housing
- Valve equalizes the pressure and prevents fogging of the glass part
- Wireless streetlight control and streetlight installation management APP is optional

Technical specifications

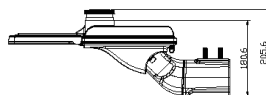
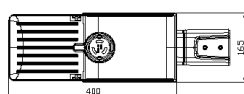
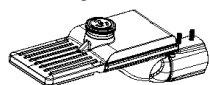
	SLDGXNXMAXE				
Wattage (W)	30	40	50	60	70
Input voltage (Vac)	220-240				
Lumen (lm)	3888/3996/4158	5112/5256/5472	6300/6660/6750	7452/7884/7938	8505/9009/9072
IP rating	IP66				
PF	>0.9				
CCT	4000K				
Certification	CE (on going)				

Dimensions & light patterns

Post top



Side entry





Fishing Light

A Revolutionary Light for Fishing



Kaohsiung Man Shuen Fa - squid lights



Shantung - squid lights



Kaohsiung Zi Da Wang - squid lights



Kaohsiung Jia Long - saury lights

Product features

- Saves on costs
- Enhances catch yields
- Withstands harsh conditions
- Safer and healthier

Technical specifications

	FLSF600XXXFT	FLSFA12R2D1FT	FLSFA12xx45FT
Input voltage	220 Vac (+/-15%)		
Output lumen (lm)	60,000 / 66,000	53,000	120,000
Efficiency (lm/W)	100 / 110 / 95		100
Wattage (W)	600	1,200	1,200
CCT (K)	2,700 / 6,100	Red, 620nm	5,000
Ra	80		80
Beam angle (°)	100D (70D, 40D optional)	120	45
Operation (°C)	-20 ~ +45		
IP	IP66		
Dimensions (mm)	320(L) x 180(W) x 290(H)	431(L) x 415(W) x 343(H)	431(L) x 415(W) x 343(H)
Weight (Kg)	6.5	11.4	11.4

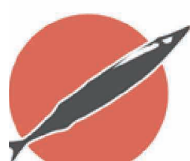
Innovative air cooling system

Protects against heavy sea waves and salt erosion



Professional optical design

Special spectrum for saury and squid



Saury



Squid

World's power solution provider



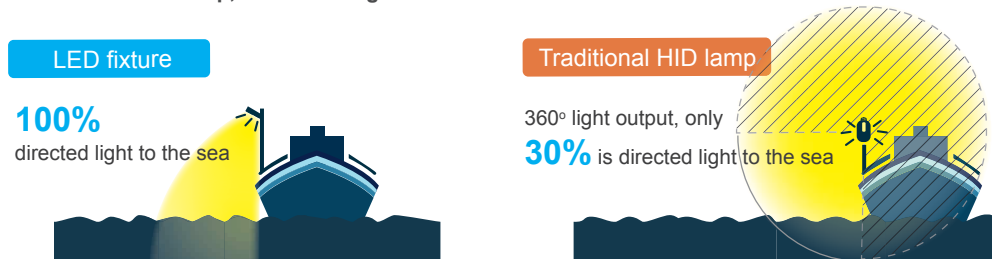
High performance



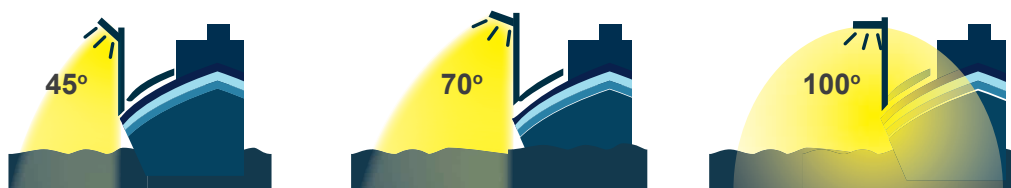
High quality



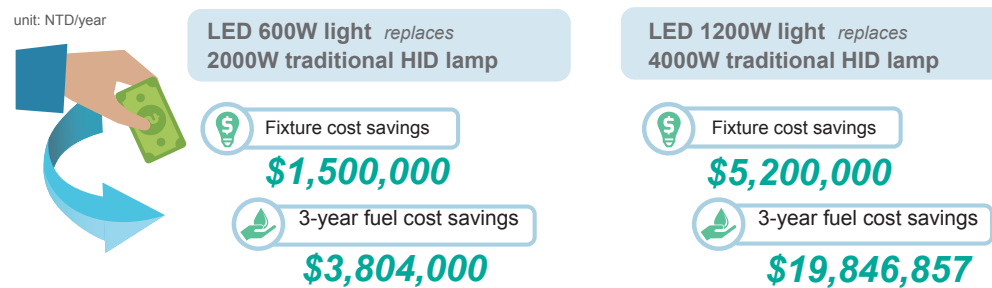
LED fixture vs. Traditional HID lamp, LED direct light is more efficient



Fixture tier angle is adjustable, Various beam angle choices



LED fishing light cost savings up to 70%



No high temperature burns UV free, prevents skin and eye damage



Passed North America ANSIC136 lighting fixture vibration test



Protects against mechanical impacts IK10 Anti-glass explosion



Protects against dust and water - IP66



Success Stories



Warehouse - Bordeaux



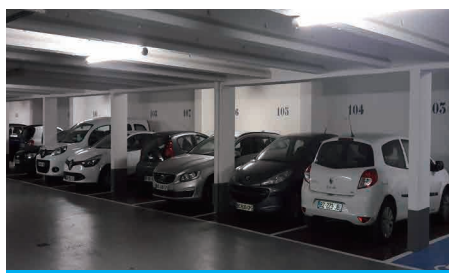
Station - Biarritz



Logistic center - Saint Priest



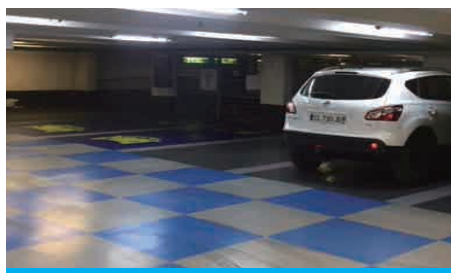
Parking garage - Sarcelles



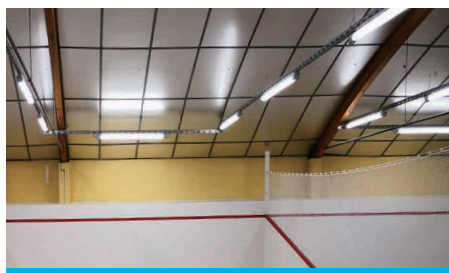
Parking garage - Paris



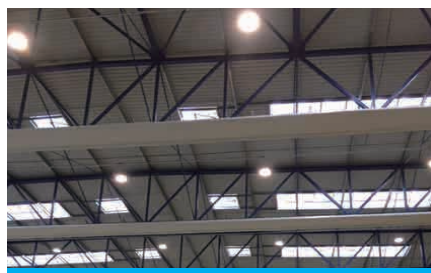
Restaurant



Parking garage - Toulouse



Squash room - Nantes



Factory - Gimont



Delta Electronics EMEA

Zandsteen 15

2132 MZ Hoofddorp, The Netherlands

TEL: +31-20-655-0900

FAX: +31-20-655-0999

For more product information and sales inquiries, please contact:

sleu@deltaww.com

www.delta-emea.com/ledlighting