

# GoHawk®

## RE8 / RE9-X

### Powersports Amplified Soundbar



## USER MANUAL

www.GoldenHawkUSA.com

714 599-7709 (US)

### 1. Contents

All-In-One Stereo Speaker  
Mounting Clamp  
Ball Joint Base & Boot  
AUX Cable  
Power Cord  
User's Manual

### 2. Features

- All-In-One design with a Built-in Amplifier
- White LED strip light
- Built-In Bluetooth 4.2 for Audio Streaming
- 3.5mm AUX Input Jack
- Built-In FM Radio Receiver
- Support USB drive with MP3 music files

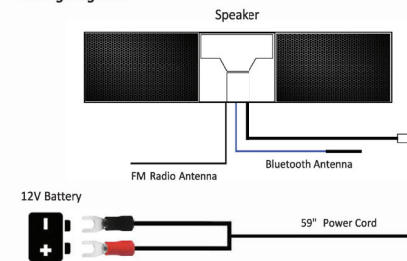
### 3. Read Before Installation

- 1) The components and wiring should not be installed on or around any moving parts, keep away from ignition parts, fuel lines, engine or any hot exhaust.
- 2) Speakers should not be installed where they might inhibit safety features on the vehicle such as lights, horns, brake levers, etc..
- 3) Always test the speakers/amplifier prior to installation. Connect to the battery and play the music at least 3-minute to ensure the product is fully functional.
- 4) Cutting rubber insert may be required for certain bar sizes.
- 5) Splash, water and dust resistance are not permanent conditions, and resistance might decrease as a result of normal wear.
- 6) To avoid battery draining, disconnect the speaker from the battery if the motorcycle/AW is planned non-operation for more than 15 days.
- 7) Engine, pipe and wind noise will overpower any speakers once it reaches certain speeds, it is physics and unavoidable.
- 8) Please connect to a correct power supply (DC 12V)

- 9) Please confirm the wiring before turning on the unit.
- 10) Please make sure the speakers are tightly clamped on the handlebar.

### 4. Installation

#### Wiring Diagram:



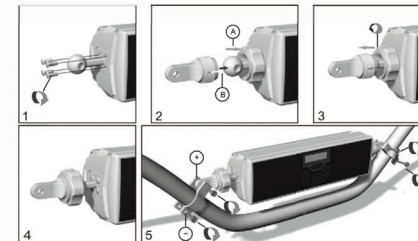
#### Wiring Instruction:

- 1) Connect the power cord to the speaker.
- 2) Connect the RED wire to positive and BLACK wire to negative on a 12V battery.
- 3) Leave the antenna wire in an open area for better reception.

**NOTE:** Printed circuit board(PCB) fuse built in. It will not be visible on the power cord.

#### Mounting Instruction:

- 1) Use 4 Phillips screws to install the ball stub base on each side of the stereo.
- 2) Put the ring (A) into the base then secure the ball seat (B) with the ball stub.
- 3) Turn the ring (A) counter-clockwise to tighten the ball joint. **NOTE: Do not over-tighten or it will be difficult to swivel.**
- 4) Repeat steps 2 and 3 on the other side of the stereo
- 5) Use mounting clamp+ & - as a pair, install the clamp on the handlebar with 2 hex socket cap screws. Use included black rubber insert to go around the bar. **NOTE: Cutting rubber insert may be required for certain bar sizes.**
- 6) After the stereo is mounted on the handlebar, connect the stereo unit to a 12V battery. Please refer to the wiring diagram.
- 7) Leave the BLACK and BLUE antenna wire in an open area for better reception.



## 5. Operation Instruction

**On/Off:**  
Short press (MOD) button to power on the stereo. Long press (MOD) button to power off.

**Switch Mode:**  
Short press (MOD) button to switch among Radio, USB, AUX and BT mode. NOTE: If USB is not inserted, the stereo will skip the unavailable mode automatically. .

**Adjust the volume:**  
Long press(« Vol-) or(» Vol+) button.

**Change Track or Scan Radio Channels:**  
In USB / Bluetooth mode, short press(« Vol-) or(» Vol+) button for Previous / Next track.  
In Radio mode, double click(>| |) to auto scan and save. Stations will be saved as P1, P2, P3 ... etc. Short press (>| |) to select the saved radio stations.

**Pause I Mute:**  
In USB / Bluetooth mode, short press(>| |) to pause music.  
LED Light (2 Brightness Settings):  
Long press (>| |) button to turn on the LED  
Long press(>| |) again for 2nd level brightness  
Long press (>| |) to turn off the LED

**Clock Setting:**  
Short press (CLK) button to display the clock. While the clock is displayed, long press (CLK) button until the clock starts blinking. Change the hour by pressing(« Vol-) or(» Vol+) button; short press (CLK) button to switch to set the minute; press(« Vol-) or(» Vol+) button to charge the minute.

## 6. FM/BT/USB/AUX

**FM Radio:**  
Double click(>| |) button to enable auto scan and save radio stations. Then short press (>| |) to select saved radio stations. Leave the black antenna wire in an open area for better reception.

**Bluetooth:**  
Short press (MOD) button to switch to "BT" mode.  
Enable the Bluetooth function on your phone and search for BT named "RE8" or "RE9-X". The "BT" will stop blinking once the devices are paired successfully. (Enter 0000 if it asks for a pin.)

**USB:**  
Insert a USB and play the MP3, WMA and WAV automatically.  
NOTE:  
1) If no USB is inserted, the stereo will skip the unavailable mode automatically.  
2) USB drive must be in FAT format. Supports up to 32GB USB.

**AUX-IN:**  
Short press the (MOD) button to switch to AUX mode. Connect an external music player via AUX jack.

## 7. Troubleshooting

**The unit is not turning on:**  
1.Make sure the RED wire is connected to positive, BLACK wire to negative.  
2.Inspect the plug that connects to the power cord extension, make sure the connectors inside are in the position.  
3.Check if the battery is in good condition, unit required at least 12V to operate. Contact us if above steps do not work.

**Unable to pair Bluetooth device:**  
1. Try to leave the blue wire(Bluetooth antenna) in an open area for better reception.  
2. New Bluetooth device may not be shown in your phone had too many devices paired in the past. Please clear them then restart your phone.  
3. The speaker will automatically connect to the last connected phone. The system cannot be paired with a new phone while it is connected to another phone. To pair with a new phone, make sure the previously connected phone is disconnected from the speaker.

**Volume is not loud enough:**  
1. Check if both speakers are in working condition.  
2. Adjust the speaker direction toward the driver's position.  
3. Turn on the volume all the way up on BOTH stereo unit AND music device (such as smartphone and mp3 player).  
4. To boost the phone output volume;

**iPhone:** Step 1: Tap the Settings icon, then scroll down and tap Music. Step 2: Tap the EQ option. Step 3: Tap Late Night.  
**Android:** Settings » Sounds and Vibration » Sound Quality and Effects » Equaliser

**Mounting clamp does not fit:**  
1. Mounting clamp is designed for bar size up to 1-1/4" {31.75mm}  
2. Custom mounting may be required if your bar size is not within the recommended size.  
3. Contact us if you have trouble installing the item.

## 8. Specifications

	RE8	RE9-X
Speaker Body Width(in.):	8-1/4	9-3/4
Speaker Overall Width(in.):	16-3/4	18-1/4
Working Voltage:	DC 12 V	
Amp Rated Power:	2*18W	
Speaker Rated Power:	2*12W 6Ω	2*15W 5Ω
Bluetooth Version:	4.2	
Frequency range:	87.5 - 108MHz	
Fuse:	PCB	

## 9. Warranty

**REGISTER YOUR PRODUCT:**  
<http://goldenhawkusa.com/warranty>  
**1-Year Limited Parts Waminty:**

All Golden Hawk USA products purchased in the United States are warranted for a period of one year from the purchase date against defects in materials and workmanship. We will provide you with free parts for one year after your purchase. The warranty is for replacement at the sole discretion of the selling dealer. If we choose to replace your product, we may replace it with a new or reconditioned unit of the same or similar design. The customer is responsible for freight charges incurred to return the product.

For all other countries, contact our technical support where you must send a copy of the original invoice with the date of purchase. Please enclose a letter stating the problem you are having with the product, your daytime phone number, and your return shipping address(no P.O. Box). Contact us to receive an RA# before sending your defective item. This warranty does not cover any unit subject to abuse, neglect, incorrect wiring, water and/or physical damage, or any repair or modification performed by someone other than a Golden Hawk USA repair technician.

Any damages resulting from legal action for breach of expressed or implied warranties shall be limited to the cost of the original purchase price of the unit. As a condition of this warranty, it is agreed that the remedy provided in this document is the sole remedy under this warranty. All liability for coincidental damages is excluded. The purchaser agrees to retain the original proof-of-purchase for establishing the effective date of this warranty. Should Golden Hawk USA or an authorized dealer replace your product under warranty, this replacement shall be considered a transaction under the original warranty and does not extend the original warranty period.

## 10. Product Support

**Please visit:** <http://goldenhawkusa.com/contact-us>  
**Email:** [info@goldenhawkusa.com](mailto:info@goldenhawkusa.com)

FCC Warning:

This equipment has been tested and found to comply with the limits for a Class B digital device, pursuant

to part 15 of the FCC Rules. These limits are designed to provide reasonable protection against harmful interference in a residential installation. This equipment generates, uses and can radiate radio frequency energy and, if not installed and used in accordance with the instructions, may cause harmful interference to radio communications. However, there is no guarantee that interference will not occur in a particular installation. If this equipment does cause harmful interference to radio or television reception, which can be determined by turning the equipment off and on, the user is encouraged to try to correct the interference by one or more of the following measures:

- Reorient or relocate the receiving antenna.
- Increase the separation between the equipment and receiver.
- Connect the equipment into an outlet on a circuit different from that to which the receiver is connected.
- Consult the dealer or an experienced radio/TV technician for help.

Caution: Any changes or modifications to this device not explicitly approved by manufacturer could void your authority to operate this equipment.

This device complies with part 15 of the FCC Rules. Operation is subject to the following two conditions:

(1) This device may not cause harmful interference, and (2) this device must accept any interference received, including interference that may cause undesired operation.

This equipment complies with FCC radiation exposure limits set forth for an uncontrolled environment. This equipment should be installed and operated with minimum distance 20cm between the radiator and your body.