

Before Installation:

Read this instruction carefully before starting installation.

Proper tools will improve the quality of installation and reduce the time required.

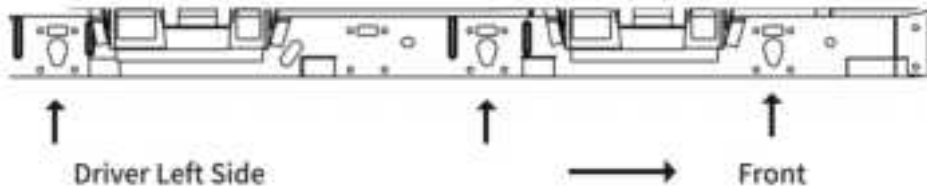
If missing parts or any damage found, please take a picture and contact us.

Professional installation would be highly recommended.

Periodic check to ensure all mounting hardware remains secure and tight.

Step 1:

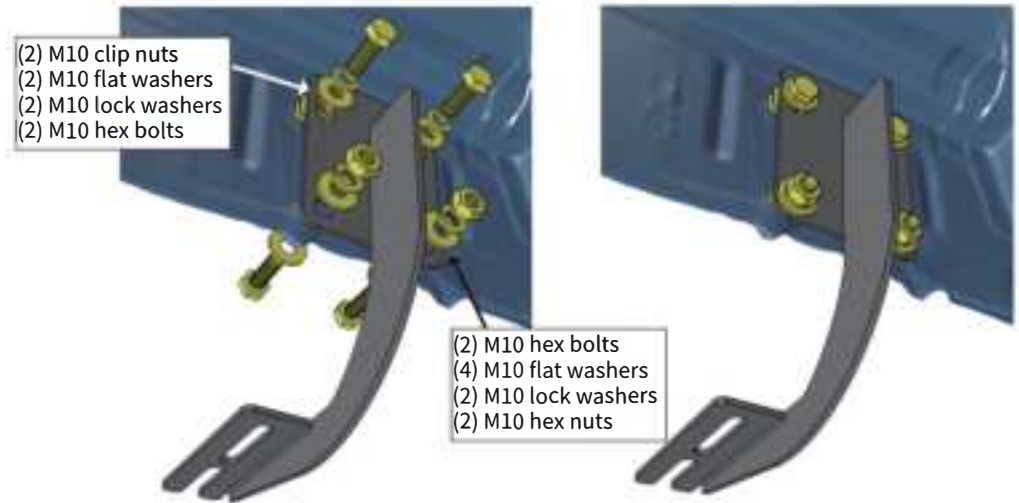
1. Locate (3) mounting positions each side.
2. Remove rubber plugs on inner rocker panel.
3. Insert clip nuts onto existing holes in the inner rocker panel.



Insert M10 clip nut onto the square hole and over the smaller hole next to it, with threads inside of the inner rocker panel.

Step 2:

1. Attach bracket onto inner rocker panel and secure with (2) M10 hex bolts, (2) M10 flat washers, (2) M10 lock washers.
2. Secure bracket onto pinch weld with (2) M10 hex bolts, (4) M10 flat washers, (2) M10 lock washers, (2) M10 hex nuts.

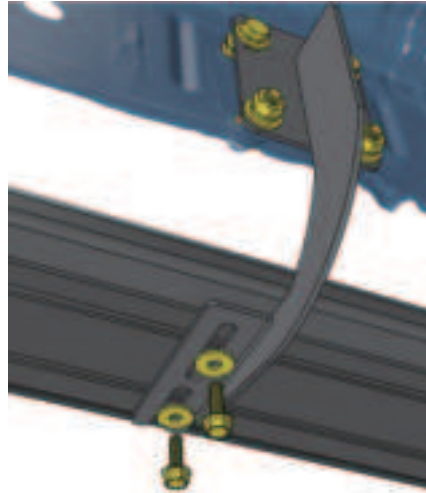


On some vehicles the mounting holes do not line up with the factory hole. In this case drill out the holes using a 7/16" drill bit.

CARE AND USE INSTRUCTIONS

Step 3:

1. Remove (6) M8 hex bolts and (6) M8 flat washer from the step bar.
 2. Slide mounting tracks to proper positions.
 3. With assistance, lift and attach the step bar to brackets.
- Secure the step bar on brackets with (6) M8 hex bolts and (6) M8 flat washers.



Driver Left Side



Front



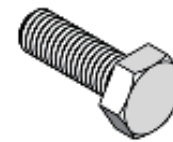
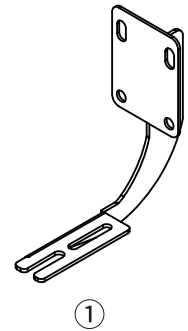
CARE AND USE INSTRUCTIONS

Step 4:

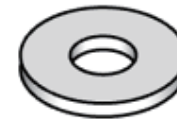
1. Tighten M10 hex bolts and nuts on vehicle with 30 ft-lbs. torque.
2. Adjust the step bar to level and tighten M8 hex bolts with 15 ft-lbs. torque.
3. After the step bar installed, periodic check to ensure all mounting hardware remains secure and tight.

Part List:

	Qty.	Description
①	× 6	Mounting Bracket
②	× 24	M10×30 Hexagon Bolt
③	× 36	M10×25 Flat Washer
④	× 24	M10 Lock Washer
⑤	× 12	M10 Clip Nut
⑥	× 12	M10 Hexagon Nut
Pre-Installed on Step Bar		
⑦	× 12	M8 Hexagon Bolt
⑧	× 12	M8×24 Flat Washer



②



③



④



⑤



⑥



⑦



⑧