

# STR-KM5/KM7

## SERVICE MANUAL

Ver. 1.6 2014.03



Photo: STR-KM7

- STR-KM5 is the receiver section in HT-M5.
- STR-KM7 is the receiver section in HT-M7.

*US Model*

*E Model*

*STR-KM5*

*Argentina Model*

*Saudi Arabia Model*

*South African Model*

*STR-KM5/KM7*

*Australian Model*

*Singapore Model*

*STR-KM7*

This receiver incorporates Dolby\* Digital and Pro Logic Surround and the DTS\*\* Digital Surround System.

\* Manufactured under license from Dolby Laboratories. Dolby, Pro Logic, and the double-D symbol are trademarks of Dolby Laboratories.

\*\* Manufactured under license under U.S. Patent Nos: 5,956,674; 5,974,380; 6,226,616; 6,487,535 & other U.S. and worldwide patents issued & pending.

DTS, the Symbol, & DTS and the Symbol together are registered trademarks & DTS Digital Surround | 96/24 is a trademark of DTS, Inc. Product includes software. © DTS, Inc. All Rights Reserved.

This receiver incorporates High-Definition Multimedia Interface (HDMI™) technology.

HDMI, the HDMI logo, and HDMI High-Definition Multimedia Interface are trademarks or registered trademarks of HDMI Licensing LLC in the United States and other countries.

"x.v.Color (x.v.Colour)" and "x.v.Color (x.v.Colour)" logo are trademarks of Sony Corporation.

"BRAVIA" is a trademark of Sony Corporation.

"PlayStation" is a registered trademark of Sony Computer Entertainment Inc.

MPEG Layer-3 audio coding technology and patents licensed from Fraunhofer IIS and Thomson.

"WALKMAN" is a registered trademark of Sony Corporation.

MICROVAULT is a trademark of Sony Corporation.

Windows media is either a registered trademark or trademark of Microsoft Corporation in the United States and/or other countries.

This product contains technology subject to certain intellectual property rights of Microsoft. Use or distribution of this technology outside of this product is prohibited without the appropriate license(s) from Microsoft.

### SPECIFICATIONS

#### Amplifier section

Power Output

##### • STR-KM7

Argentina model

Stereo mode output (rated) (6 ohms, 1 kHz, THD 1%)  
120 W + 120 W<sup>1)</sup>

Surround mode output<sup>2)</sup> (reference) (6 ohms, 1 kHz, THD 30%)

	RMS output
FRONT:	255 W per channel <sup>1)</sup>
CENTER:	255 W <sup>1)</sup>
SURROUND:	255 W per channel <sup>1)</sup>
SURROUND BACK:	255 W per channel <sup>1)</sup>
Surround mode <sup>2)</sup> (reference) (4 ohms, 100 Hz, THD 30%)	
SUBWOOFER:	280 W per channel <sup>1)</sup>

Other models

Stereo mode output (rated) (6 ohms, 1 kHz, THD 1%)  
120 W + 120 W<sup>1)</sup>

Surround mode output<sup>2)</sup> (reference) (6 ohms, 1 kHz, THD 10%)

	RMS output
FRONT:	216 W per channel <sup>1)</sup>
CENTER:	216 W <sup>1)</sup>
SURROUND:	216 W per channel <sup>1)</sup>
SURROUND BACK:	216 W per channel <sup>1)</sup>
Surround mode <sup>2)</sup> (reference) (4 ohms, 100 Hz, THD 10%)	
SUBWOOFER:	250 W per channel <sup>1)</sup>

9-890-588-07

2014C80-1

© 2014.03

**Sony Corporation**

**Audio & Video Business Group**

**Published by Sony EMCS (Malaysia) PG Tec**

<sup>1)</sup>Measured under the following conditions:

Area	Power requirements
SAF, SP	240 V AC, 50 Hz
EA	127 V AC, 60 Hz
AUS, AR	230 V AC, 50 Hz

<sup>2)</sup> Reference power output for front, center, surround, surround back speakers and subwoofers. Depending on the sound field settings and the source, there may be no sound output.

##### • STR-KM5

#### AUDIO POWER SPECIFICATIONS

#### POWER OUTPUT AND TOTAL HARMONIC DISTORTION:

##### (US model only)

Front L + Front R:

With 6 ohm loads, both channels driven, from 50 Hz – 20,000 Hz; rated 100 watts per channel minimum RMS power, with no more than 0.2% total harmonic distortion from 250 milliwatts to rated output.

US, Latin America and Argentina models

Stereo mode output (rated) (6 ohms, 1 kHz, THD 1%)

120 W + 120 W<sup>3)</sup>

Surround mode output<sup>4)</sup> (reference) (6 ohms, 1 kHz, THD 30%)

	RMS output
FRONT:	255 W per channel <sup>3)</sup>
CENTER:	255 W <sup>3)</sup>
SURROUND:	255 W per channel <sup>3)</sup>
Surround mode <sup>4)</sup> (reference) (4 ohms, 100 Hz, THD 30%)	
SUBWOOFER:	280 W per channel <sup>3)</sup>

Other models

Stereo mode output (rated) (6 ohms, 1 kHz, THD 1%)  
120 W + 120 W<sup>3)</sup>

Surround mode output<sup>4)</sup> (reference) (6 ohms, 1 kHz, THD 10%)

	RMS output
FRONT:	216 W per channel <sup>3)</sup>
CENTER:	216 W <sup>3)</sup>
SURROUND:	216 W per channel <sup>3)</sup>
Surround mode <sup>4)</sup> (reference) (4 ohms, 100 Hz, THD 10%)	
SUBWOOFER:	250 W per channel <sup>3)</sup>

– Continued on next page –

## MULTI CHANNEL AV RECEIVER

# SONY®

## SECTION 6 EXPLODED VIEWS

**Note:**

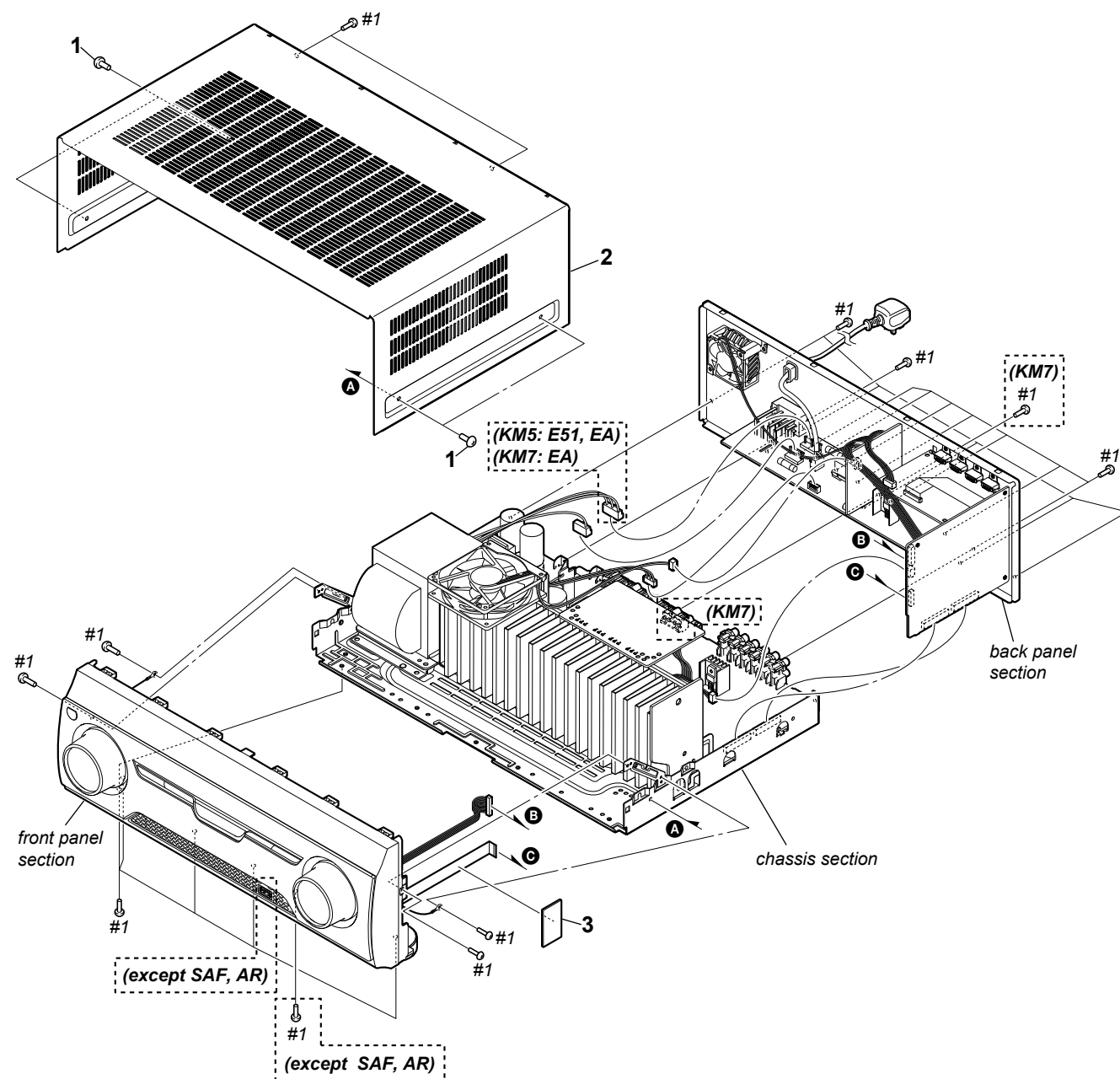
- -XX and -X mean standardized parts, so they may have some difference from the original one.
- Items marked "\*" are not stocked since they are seldom required for routine service. Some delay should be anticipated when ordering these items.
- The mechanical parts with no reference number in the exploded views are not supplied.

- Color Indication of Appearance Parts Example:  
 KNOB, BALANCE (WHITE) . . . (RED)  

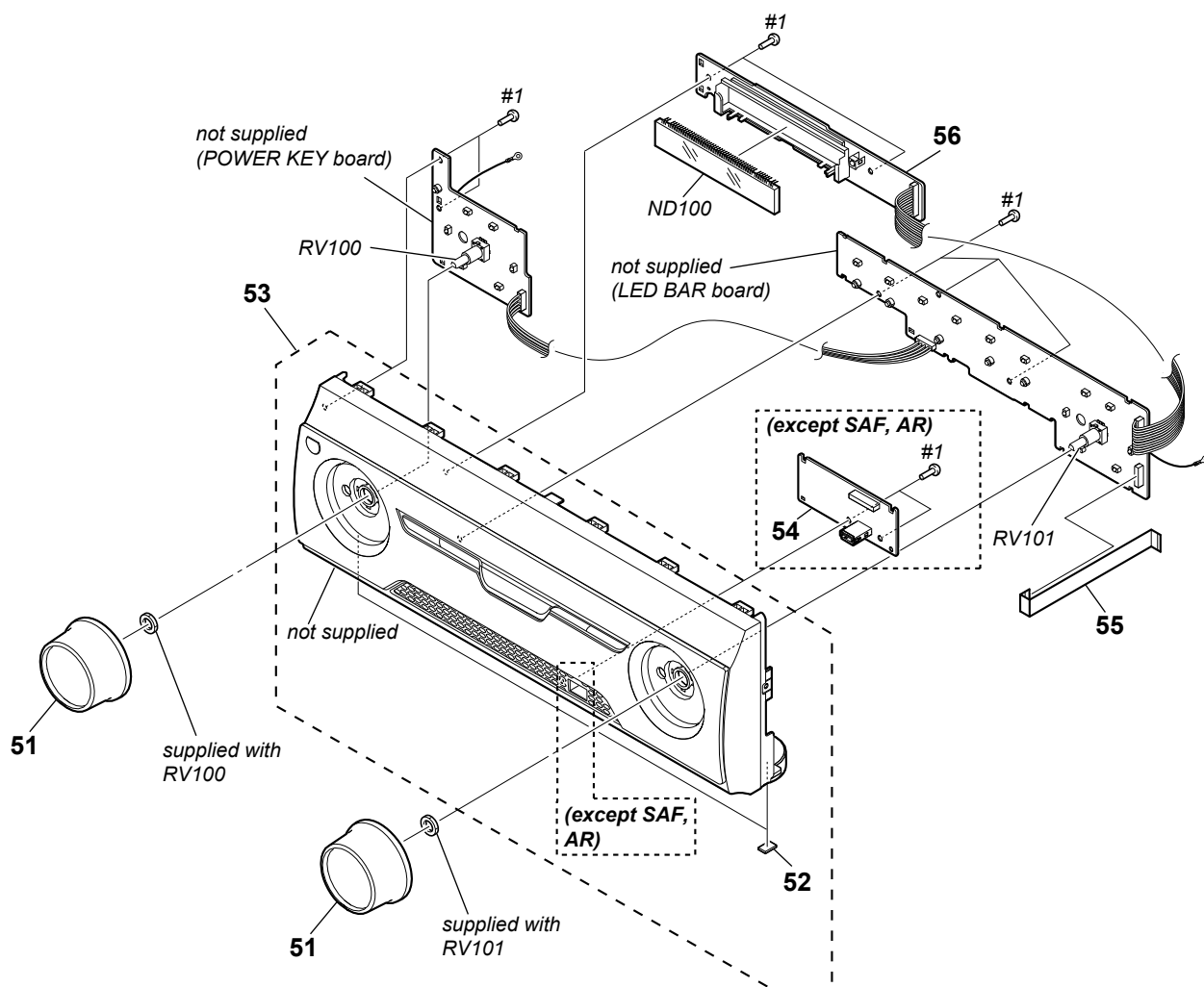
↑  
Parts Color
↑  
Cabinet's Color
- Accessories are given in the last of the electrical parts list.
- Abbreviation  
 E12 : 220 - 240V AC area in E model  
 E51 : Chilean and Peruvian models  
 AR : Argentina model  
 AUS : Australian model  
 EA : Saudi Arabia model  
 SAF : South African model  
 SP : Singapore model  
 TH : Thai model

The components identified by mark  $\triangle$  or dotted line with mark  $\triangle$  are critical for safety.  
 Replace only with part number specified.

The components identified by mark  $\triangle$  contain confidential information.  
 Strictly follow the instructions whenever the components are repaired and/or replaced.

**6-1. CASE SECTION**

## 6-2. FRONT PANEL SECTION





## 6-4. CHASSIS SECTION

