



# Tru-Form Media™ 1600

## Wireless Ergonomic Keyboard & Optical Mouse



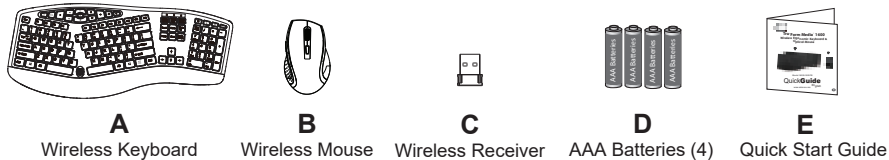
Model: WKB-1600CB

## QuickGuide

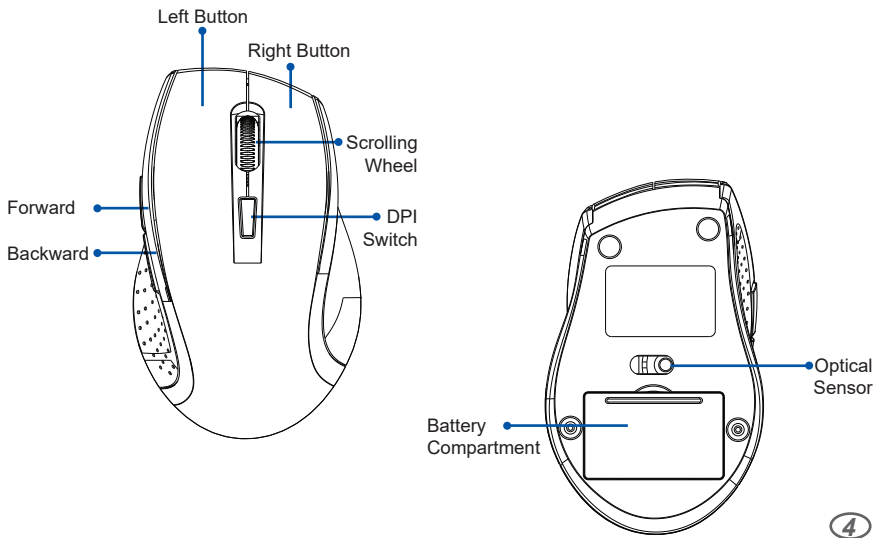
English

www.adesso.com

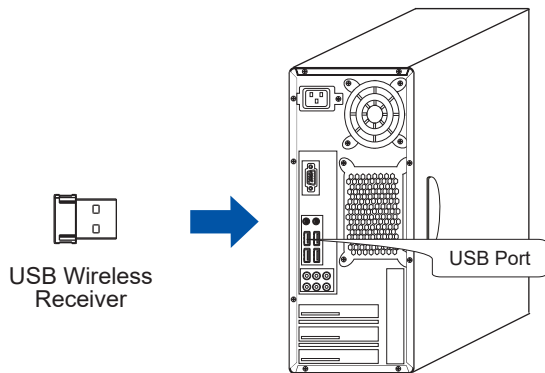
### CONTENTS



### MOUSE DESCRIPTION



2. Turn ON your computer and let Windows load completely.
3. Plug the USB Wireless Receiver into the USB port of your computer



4. Receiver will automatically connect with wireless keyboard and mouse. Now, they are ready to be used.

### NOTE:

Windows will detect the driver automatically. No driver required.

### LIMITED WARRANTY

Adesso provides a one year limited warranty for all of its products against defects in material and workmanship.

During this period, Adesso will repair or replace any product which proves to be defective. However, Adesso will not warranty any product which has been subject to improper freight handling, shipping abuse, neglect, improper installation or unauthorized repair. The warranty will not cover products installed with components not approved by Adesso and products where the sealed assembly trace has been broken.

If you discover a defect, Adesso will, at its option, repair or replace the product at no charge to you provided you return it during the warranty period with freight charges pre-paid to Adesso. Before returning any product, you must obtain a Return Merchandise Authorization number (RMA). This RMA # must be clearly marked on the outside of the package you are returning for warranty service. Be certain to also include your name, shipping address (no PO Boxes), telephone number, and a copy of the invoice showing proof of purchase in the package.

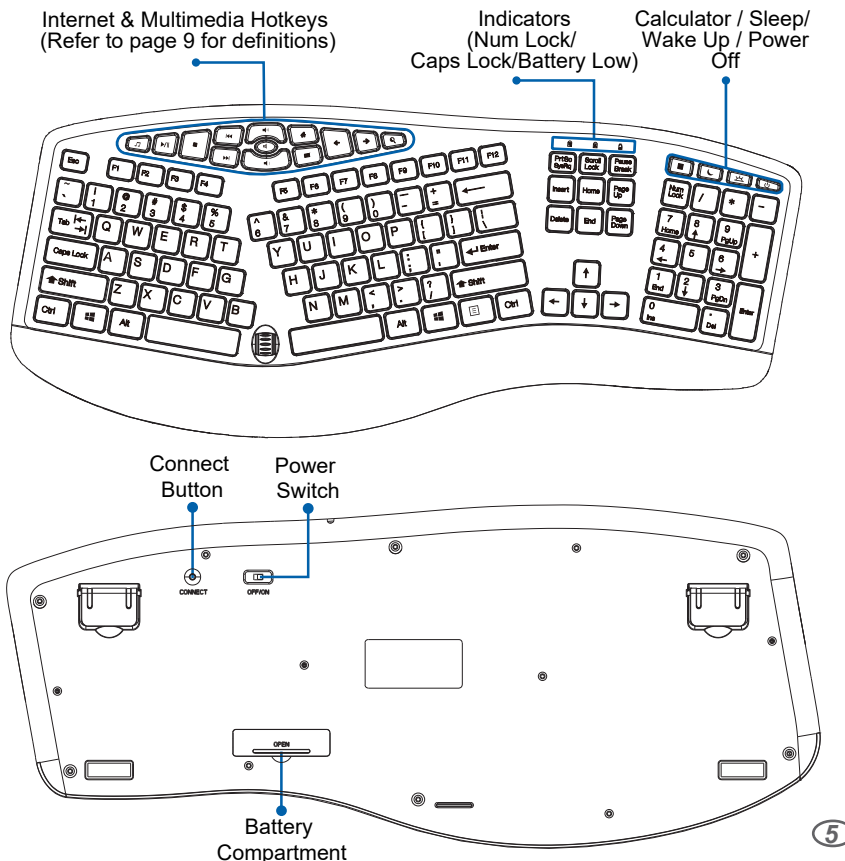
### SUPPORT

We have listed most of our FAQ's (Frequently Asked Questions) at: <http://www.adesso.com/faqs.asp>. Please visit our FAQ Service & Support pages before you contact our E-mail or Telephone Support.

**Email Support:** If our FAQ's do not help you resolve your issues, please email [support@adesso.com](mailto:support@adesso.com)

**Telephone Support:**  
Toll Free: (800) 795-6788  
9:00AM to 5:00PM PST Monday - Friday

### KEYBOARD DESCRIPTION



### TIPS:

- When the Battery Low LED is ON, it means that the device requires to change the batteries.
- We suggest to turn "OFF" the devices when leaving your desk for more than an hour to save battery life for longer lasting use.

### TROUBLESHOOTING

If your device cannot be operated, please try the following:

1. Make sure you have inserted two AAA batteries inside the battery compartment correctly. Switch the keyboard to ON.
2. Make sure you have connected the USB receiver correctly to the computer's USB ports. Move the devices 1 foot away from the receiver in order to avoid interference while pairing connection.
3. Press CONNECT once on the bottom of the keyboard within 15 seconds after plugging USB receiver to computer.
4. Hold the middle and right buttons on the mouse together after performing step 1 through 2 for the mouse.

**Note:** Wireless phone, routers and other devices that uses 2.4GHz frequency, might cause interference with wireless keyboard and mouse. Please relocate such wireless appliances away from your keyboard and mouse.

### INTRODUCTION

The Adesso Wireless Ergonomic Keyboard & Optical Mouse offer users two advanced input devices with ergonomic design, multifunctional features and a wireless range of up to 30 feet. The design of this keyboard with splitted key zones and gently sloped encourages natural position of hands, wrists, and forearm in maximum comfort for long use. The new chiclet keycap with its larger keycap surface makes typing easier and blends in with the keyboard to make a stylish design. The included wireless optical mouse not just provides comfortable ergonomic design but also equips with a DPI switch for changing resolution (800/1200/1600) and two Internet navigation buttons.

### SPECIFICATIONS

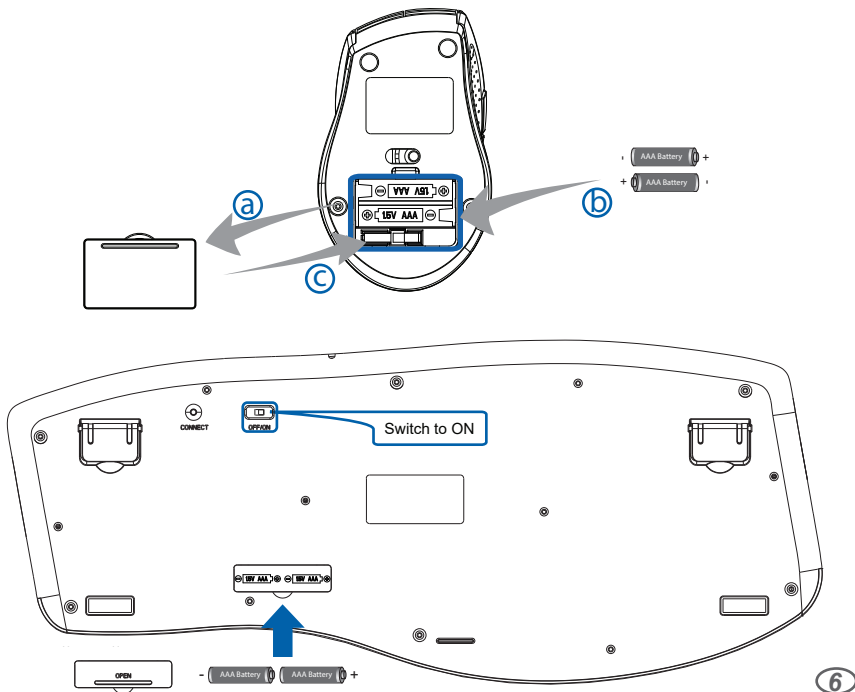
- Keyboard & Mouse Wireless Technology: 2.4GHz RF Wireless Technology
- Keyboard & Mouse Working Range: Up to 30 feet (10m)
- Keyboard & Mouse Battery Type: (2) AAA Batteries per device
- Keyboard Layout: 104-Key US
- Key Type: Membrane
- Keyboard Hotkeys: 17 Hotkeys (Windows, Internet and Multimedia)
- Keyboard Indicators: Battery Low, Num Lock & Caps Lock
- Keyboard Dimensions: 19.8" x 8.3" x 1" (503 x 212 x 25 mm)
- Mouse Tracking Method: Optical Sensor
- Mouse DPI: 3 Levels - 800, 1,200 & 1,600
- Mouse Dimensions: 4.7" x 2.9" x 1.7" (119 x 74 x 43 mm)

### REQUIREMENTS

- Operating System: Windows® 7 & above
- Connectivity: USB for Wireless Receiver

### INSTALLATION

1. Procedure of changing your batteries:
  - a) Remove battery cover from mouse and keyboard battery compartment
  - b) Insert (2) AAA batteries into both device
  - c) Close the battery compartment covers on both device



### HOTKEY DEFINITIONS

Key	Action	Description
Music	Music	Launches default media player application
Play/Pause	Play/Pause	Play or pauses track in multimedia software
Stop	Stop	Stops track from playing in multimedia software
Previous Track	Previous Track	Takes you to previous track in multimedia software
Next Track	Next Track	Takes you to next track in multimedia software
Volume Down	Volume Down	Decreases computer main volume
Volume Up	Volume Up	Increases computer main volume
Mute	Mute	Mutes computer main volume
Home	Home	Accesses Homepage
Email	Email	Launches default email application
Back	Back	Back to the previously viewed webpage
Forward	Forward	Go to the next viewed webpage
Search	Search	Launches Search Bar
Calculator	Calculator	Launches Calculator
Sleep	Sleep	Sets computer to sleep mode
Wake Up	Wake Up	Wakes computer up
Power Off	Power Off	Shuts down computer