

# User Guide Fridge-tag® 3

## Quick Info - User Guide



# Reading the display during measurement

## Important symbols

OK symbol:



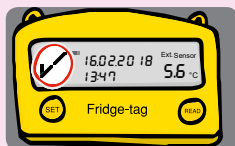
Alarm symbol:



Warning symbol:



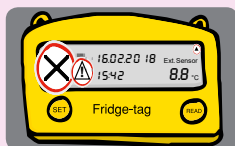
## Indication of an OK display



In measurement mode, when no alarm has been triggered, the following information is indicated:

- The OK symbol ✓
- The current date and time: 16.02.20 18:13:47
- The current temperature: 5.6 °C

## Indication of an Alarm display



In measurement mode, when an alarm has been triggered, the following information is indicated:

- The alarm symbol ✕
- An additional warning symbol ⚠
- The corresponding arrow ▲▼ (alarm indicator), upper/lower alarm
- The current date and time: 16.02.20 18:15:42
- The current temperature: 8.8 °C

# Alarm display and confirmation options (factory preset)

## Option 1- Alarm indication "all alarms"

With this option the alarms will be visible on the display with an **✗** for 30 days. By pressing the **READ** button, the **⚠** will be disabled for the corresponding alarms. The **✗** cannot be canceled nor reset.

- In this mode only one upper and one lower alarm will be triggered per day.
- The **✗** will be present on the display for 30 days.
- The **⚠** can be deactivated by confirming all existing alarms in the readout mode.
- The alarm buzzer stops when the alarm is confirmed within the set alarm limits. Otherwise the buzzer pauses for approx. 1 hour and starts again for up to 168 hours (7 days).

## Option 2 - Alarm indication "unconfirmed alarms"

The alarms are shown with the **✗** until all alarms (in the 30-day history) have been confirmed as solved by pressing the **READ** button. Afterwards the display will show the **✓** until a new alarm is triggered.

**Confirmation:** Temperature is within the set alarm limits. Press the **READ** button and the **✗** and the **⚠** will immediately disappear and the optional buzzer stops. A new alarm will be triggered as soon as the set alarm limits are exceeded again.

**Confirmation:** Temperature is outside the set alarm limits. If the **READ** button is pressed still during a temperature violation the buzzer will be muted for approx. 1 hour. The **✗** and the **⚠** will stay on the display for the corresponding alarm. If the temperature still exceeds the limit after 1 hour, the buzzer will restart beeping.

## Confirming an alarm

An alarm **must be confirmed** on the device directly by the user. Confirming an alarm can only be made if the device gets back within the set temperature limits.

The alarm cannot be confirmed with a SMS command, only direct on the device.

## Not confirmed alarms

If a an alarm event is **not confirmed** on the device and the device gets back within the set temperature limits, an alarm will be retriggered when the limit is violated again.

This ensures that a forgotten confirmation of an alarm event on the device itself, does not result in a missed following alarm.

## Remote Alarm Notifications

In case an upper or lower alarm is triggered, the pre-defined recipient(s) will be notified as follows:

- Standalone Version: SMS Notification
- Cloud Version: Make sure that the system is set up to your needs (e.g. in SmartView SMS and Email Notifications are available).

## Audio alarm (factory preset)

In case an upper or lower alarm is triggered, 3 audible alarm signals are emitted immediately. Thereafter:

- Every minute 1 alarm signal for maximally 168 hours (7 days).
- After 168 hours (7 days) the buzzer will stop.
- If an alarm event is confirmed (**READ** is pressed) while the limits are still exceeded the buzzer pauses for approx. 1 hour and then restarts beeping every 3 minutes.
- Confirmation within the alarm limits will stop the buzzer.

## Reading the history

### Option 1: Read out day-per-day directly on the device (30 day history)

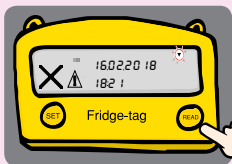
#### Example of an OK display



The following information is indicated on the display:

- The OK symbol ✓
- The corresponding flashing arrow ▲ (example: high arrow "today")
- The highest recorded temperature of that day: 10.5 °C
- The time duration out of the preset temperature upper limit: 00:32 (hrs:min)

## Example of an alarm display

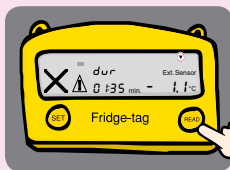


1st display

Press **READ**.

The following information is indicated on the screen:

- The alarm- **X** and the warning symbol **▲**
- The corresponding flashing arrow **▼** (alarm indicator) (example: Temperature out of **lower** alarm limit)
- The date of alarm: **16.02.20 18**
- The time of alarm: **18:21**



2nd display

Press **READ** a second time.

The following additional information is indicated:

- **Lowest** recorded temperature of that day: **-1.1°C**
- The **duration** or the exceedance of the preset lower temperature limit: **01:35 (hrs:min)**

**Note:** Continue repetitively pressing the **READ** button to read out the details of the past 30 days.

## Option 2: Read only alarms

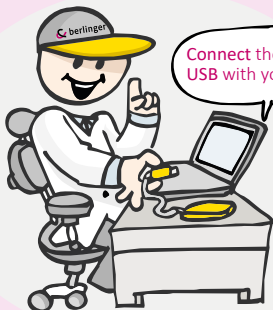
**directly** Alarm-Super-Jump function (30-day history)



Press and hold **READ**  
for **3 seconds**.

**Note:** Press and hold the **READ** button again for at least **3 seconds** and the next alarm event will appear on the screen.

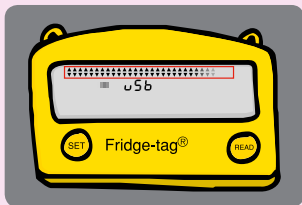
## Option 3: Read out data with a computer



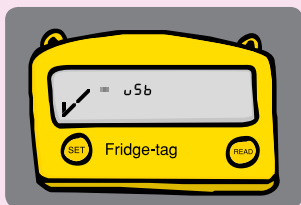
Connect the device via  
USB with your computer.

**Note:** Disconnect the external sensor from the device first.

The Fridge-tag will now generate a PDF and ASCII report of max. 28 or 56 days (factory setting). This process may take up to 2 minutes.



The continuously appearing arrows in the upper display area indicate that the device is processing.



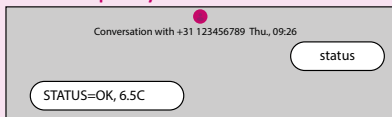
This process must not be interrupted until the OK symbol ✓ appears on the display. This indicates that the creation of the ASCII and PDF files has been successfully completed. Open the disk drive named "FT3" and copy/open the files.



## Option 4: SMS temperature reading

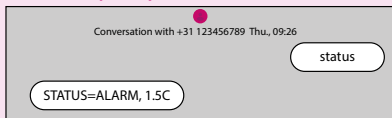
Status temperature query: send an SMS with the content „**status**“ to mobile number of the device. The device returns a SMS with the current **STATUS** of the device.

### Status query OK



Fridge-tag 3 is in the OK state, the current temperature is 6.5°C and within the set alarm limits.

### Status query alarm



Fridge-tag 3 is in the alarm state, the current temperature is 1.5°C and below the set alarm limits..

**Note:** Please confirm the alarm directly on the device. SMS confirmation is not possible.

## Cloud Version

Please log in to your Data Management Software (Berlinger SmartView, etc.) to manage the data.

**External sensor:** Please connect the device with the external sensor again. After 10 minutes (factory standard) without a connection between the device and the external sensor the following display appears and:

- The buzzer will beep twice at intervals of three minutes for a maximum of 168 hours (7 days).
- The whole display starts blinking.
- Any confirmation will stop the display from blinking.
- The buzzer only stops if the connection error is corrected. If the error still exists, the buzzer continuously beeps at a three-minute interval for 168 hours (7 days).



For more information download the whole user manual from  
[www.berlinger.com/user-manuals](http://www.berlinger.com/user-manuals).



Berlinger & Co. AG  
Mitteldorfstrasse 2  
9608 Ganterschwil  
Switzerland

Tel. +41 71 982 88 11  
[www.berlinger.com](http://www.berlinger.com)