



Thon DJ Table Z-Style

DJ Table



Thomann GmbH
Hans-Thomann-Straße 1
96138 Burgebrach
Germany
Telephone: +49 (0) 9546 9223-0
Internet: www.thomann.de

07.04.2022, ID: 462836

Table of contents

1	Safety instructions.....	4
2	Scope of delivery.....	5
3	Installation.....	6
4	Technical specifications.....	10
5	Protecting the environment.....	11

1 Safety instructions

DANGER!

Danger for children

Ensure that plastic bags, packaging, etc. are properly disposed of and are not in the reach of babies and young children. Choking hazard!

Ensure that children do not detach any small parts (e.g. knobs or the like) from the product. They could swallow the pieces and choke!

Never let children play unattended with the product.

CAUTION!

Risk of injury due to heavy weight

Due to the heavy weight of the studio desk, at least two persons are required for transport and assembly.

CAUTION!

Risk of injury to the hands

When assembling and screwing the individual parts, pay attention to sharp edges on tools, screws and components.

NOTICE!

Possible staining

The plasticiser contained in the rubber feet of this product may possibly react with the coating of your surface and after some time cause permanent dark stains.

In case of doubt, do not put the rubber feet directly on the surface and use a suitable underlay if necessary, i.e. felt-pad floor protectors or similar.

2 Scope of delivery

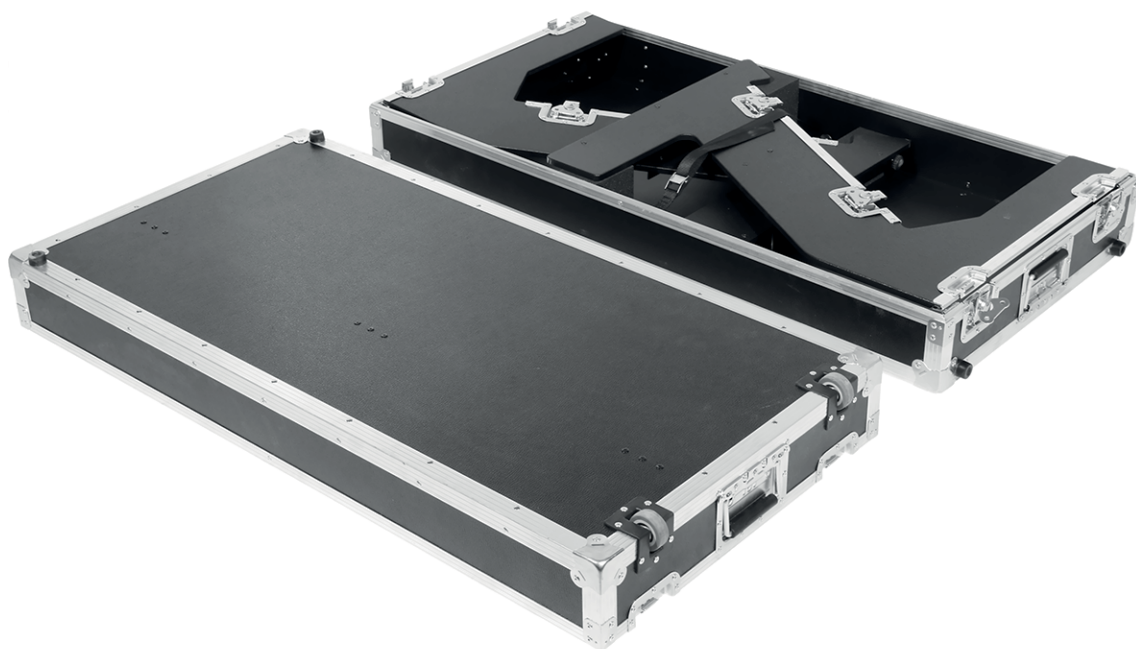
- Thon DJ Table Z-style with the following components:
 - 8 × spring-loaded butterfly lock
 - 4 × folding handle
 - 8 × flat steel corner
 - 6 × rubber foot
 - 2 × recessed edge castor on the case
 - 4 × height-adjustable foot with knurled plate
 - 2 × star knob screw
 - 1 × lashing strap
 - 1 × strap knob
 - Foam paddings
- 1 × assembly instruction

3 Installation



To assemble the case, place it on a suitable mounting surface with the edge castors facing up. Use a soft padding to prevent damages to the surfaces.

Open the butterfly locks and put the case lid with the edge castors next to the case bottom with the Z-shaped side panels.



Open the lashing strap that secures the Z-panels in the bottom of the case.



Set up the upper Z-panel and close the lateral butterfly locks so that the Z-panel is fixed.



Then set up the lower Z-panel and close the lateral butterfly locks so that the Z-panel is fixed.





Mount the case lid for stabilizing the DJ Table!

Lay the case on the mounting surface as shown.



Lay the case lid flush with the butterfly locks on the Z-panels as shown and close the butterfly locks so that the case lid is fixed.



Set up the fully assembled unit. Open the bungee loop of the tray on the inside of the case lid and carefully lay the tray onto the Z-panel brackets.



Secure the tray to the Z-panels with the two factory-installed star knob screws.



4 Technical specifications

Working height tabletop	approx. 900 mm
Material	7 mm birch multiplex 30 mm × 30 mm aluminium profiles
Colour	Black
Item no.	462836
Dimensions case (W × H × D)	1224 mm × 604 mm × 275 mm
Weight	24.1 kg

5 Protecting the environment

Disposal of the packaging material



For the transport and protective packaging, environmentally friendly materials have been chosen that can be supplied to normal recycling.

Ensure that plastic bags, packaging, etc. are properly disposed of.

Do not just dispose of these materials with your normal household waste, but make sure that they are collected for recycling. Please follow the notes and markings on the packaging.

