

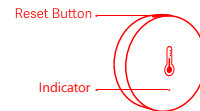
## Mi Temperature and Humidity Sensor User Manual



### Product Overview

Mi Temperature and Humidity Sensor detects and records the ambient temperature and humidity in real-time. You can check the current and historical data via the app. Based on the temperature or humidity changes detected, it can realize automatic control over other smart devices via the hub to intelligently perform various scenarios.

\*This product is for indoor use only, and needs to be used along with a device with hub capabilities.



01

### Connecting with Mi Home / Xiaomi Home App

This product works with Mi Home / Xiaomi Home app \*. Control your device, and interact it and other smart home devices with Mi Home / Xiaomi Home app.

Scan the QR code to download and install the app. You will be directed to the connection setup page if the app is installed already. Or search "Mi Home / Xiaomi Home" in the app Store to download and install it.

Open Mi Home / Xiaomi Home app, tap "+" on the upper right. Select "Mi Temperature and Humidity Sensor", and then follow prompts to add your device.

\*The app is referred to as Xiaomi Home app in Europe (except for Russia). The name of the app displayed on your device should be taken as the default.

02



Note: The version of the app might have been updated, please follow the instructions based on the current app version.

### Installation

Effective Range Test: Press the reset button at the desired location. If the hub beeps, it indicates that the sensor can communicate effectively with the hub.

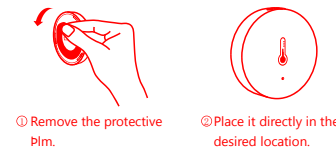
Option 1: Place it directly in the desired location.

03

Option 2: Remove the protective Plm (an additional adhesive sticker can be found inside the box) to stick it at the desired location.

\*Make sure the surface is clean and dry.

\*Do not install them on any metal surface.



### Specifications

Model: WSDCGQ01LM

Item Dimensions: 36 × 36 × 11.5 mm


Wireless Connectivity: Zigbee


Battery Type: CR2032

Temperature Detection Range & Accuracy:  
-20°C to 50°C, ±0.3°C

04


Humidity Detection Range & Accuracy: 10–90% RH, non-condensing , ±3%  
Maximum Transmit Power: 10.5 dBm  
Working Frequency: 2405 MHz en dash 2480 MHz

 Hereby, Lumi United Technology Co., Ltd., declares that the radio equipment type [Mi Temperature and Humidity Sensor, WSDCGQ01LM] is in compliance with Directive 2014/53/EU. The full text of the EU declaration of conformity is available at the following internet address: <http://www.mi.com/global/service/support/declaration.html>

 All products bearing this symbol are waste electrical and electronic equipment (WEEE as in directive 2012/19/EU) which should not be mixed with unsorted household waste. Instead, you should protect human health and the environment by handing over your waste equipment to a

05

designated collection point for the recycling of waste electrical and electronic equipment, appointed by the government or local authorities. Correct disposal and recycling will help prevent potential negative consequences to the environment and human health. Please contact the installer or local authorities for more information about the location as well as terms and conditions of such collection points. Symbol for "ENVIRONMENT PROTECTION – Waste electrical products should not be disposed of with household waste. Please recycle where facilities exist. Check with your local Authority or retailer for recycling advice".

 Symbol on the product or on its packaging indicates that this product may not be treated as household waste. Instead it shall be handed over to the applicable collection point for the recycling of electrical and electronic equipment.

06