

# INSTALL/ REMOVAL INSTRUCTIONS: WINDOW REGULATOR

**ATTENTION:** Refer to the appropriate shop manual for your vehicle to obtain specific service procedures for this part. If you do not have a service manual or lack the skill to install this part, it is recommended that you seek the services of a qualified technician. Pay special attention to all cautions and warnings included in the shop manual. Read and follow all instructions carefully.

## REMOVAL/INSTALL OF WINDOW REGULATOR (740-679) Ford Crown Victoria, Mercury Grand Marquis 1992–2010

### General Tech Tips:

- Use painter's tape rather than duct tape to secure window. It will not damage paint or leave sticky residue.
- A plastic pry tool is useful. It will not easily damage delicate trim like a screwdriver or metal pry bar.
- The replacement regulator should have a liberal amount of grease on slide area. If there is not much grease present, white lithium grease works well to lubricate the slide area.
- Aftermarket window tinting can cause the window to travel slower and put additional strain on the window regulator assembly.
- Window run channels should be cleaned and lubricated before installation of a new window regulator assembly. Silicone spray works well.

### Tools required for removal and installation of window regulator and motor assembly:

- **Silicone spray lubricant**
- **Trim panel removal tool**
- **Pick**
- **Saddle cup assembly, tape, or wedge to hold window in place**
- **Flat-blade screwdriver or plastic pry tool**
- **10mm socket or driver**
- **Phillips screwdriver**
- **Grease pencil or marker**
- **1/8" drill bit, 3/8" drill bit**
- **3/8" power drill**

**PLEASE WEAR SAFETY GLASSES!**



Disclaimer:

Even though every attempt is made to ensure this information is complete and accurate, it is impossible to account for all possible circumstances or situations. Please consult with a qualified auto technician before attempting to perform any work you are not qualified to do. Automobiles can be hazardous to work on; be sure to take all necessary safety precautions. Failure to do so may result in property damage or personal injury. Certain motor vehicle standards and performance requirements may apply to your motor vehicle (such as Federal Motor Vehicle Safety Standards by the National Highway Traffic Safety Administration). Be sure that your work is performed in accordance with such standards and that you do not disable any motor vehicle safety feature.

©2011 Dorman Products, Inc.

No reproductions in whole or in part without prior written approval.

## INSTALL/ REMOVAL INSTRUCTIONS: WINDOW REGULATOR

**ATTENTION:** Refer to the appropriate shop manual for your vehicle to obtain specific service procedures for this part. If you do not have a service manual or lack the skill to install this part, it is recommended that you seek the services of a qualified technician. Pay special attention to all cautions and warnings included in the shop manual. Read and follow all instructions carefully.

## **Removal Instructions**

**STEP 1:** Remove the interior door trim panel retaining screw.



**STEP 2:** Using a trim panel removal tool, remove the door handle trim bezel.



Disclaimer:

Even though every attempt is made to ensure this information is complete and accurate, it is impossible to account for all possible circumstances or situations. Please consult with a qualified auto technician before attempting to perform any work you are not qualified to do. Automobiles can be hazardous to work on; be sure to take all necessary safety precautions. Failure to do so may result in property damage or personal injury. Certain motor vehicle standards and performance requirements may apply to your motor vehicle (such as Federal Motor Vehicle Safety Standards by the National Highway Traffic Safety Administration). Be sure that your work is performed in accordance with such standards and that you do not disable any motor vehicle safety feature.

©2011 Dorman Products, Inc.

No reproductions in whole or in part without prior written approval.

## INSTALL/ REMOVAL INSTRUCTIONS: WINDOW REGULATOR

**ATTENTION:** Refer to the appropriate shop manual for your vehicle to obtain specific service procedures for this part. If you do not have a service manual or lack the skill to install this part, it is recommended that you seek the services of a qualified technician. Pay special attention to all cautions and warnings included in the shop manual. Read and follow all instructions carefully.

**STEP 3:** Using a trim panel removal tool or a flat-blade screwdriver, remove the power window switch. **NOTE:** If using a flat-blade screwdriver, take care that you do not damage the door panel.



**STEP 4:** Lift the interior door trim panel in an upward and outward motion to remove the door trim panel. **NOTE:** Before lifting the door trim panel from its position, you may want to push the window switch through the opening of the door trim panel.

Disclaimer:

Even though every attempt is made to ensure this information is complete and accurate, it is impossible to account for all possible circumstances or situations. Please consult with a qualified auto technician before attempting to perform any work you are not qualified to do. Automobiles can be hazardous to work on; be sure to take all necessary safety precautions. Failure to do so may result in property damage or personal injury. Certain motor vehicle standards and performance requirements may apply to your motor vehicle (such as Federal Motor Vehicle Safety Standards by the National Highway Traffic Safety Administration). Be sure that your work is performed in accordance with such standards and that you do not disable any motor vehicle safety feature.

©2011 Dorman Products, Inc.

No reproductions in whole or in part without prior written approval.

## INSTALL/ REMOVAL INSTRUCTIONS: WINDOW REGULATOR

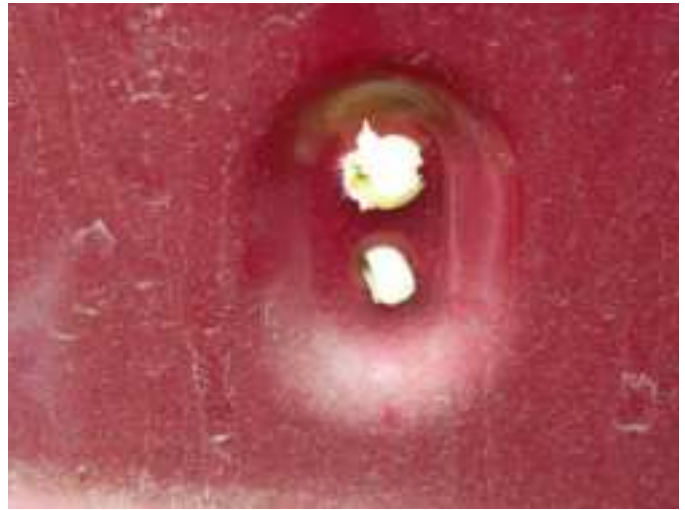
**ATTENTION:** Refer to the appropriate shop manual for your vehicle to obtain specific service procedures for this part. If you do not have a service manual or lack the skill to install this part, it is recommended that you seek the services of a qualified technician. Pay special attention to all cautions and warnings included in the shop manual. Read and follow all instructions carefully.

**STEP 5:** Once the door trim panel has been removed, remove the water vapor barrier.



**STEP 6:** Using a trim panel removal tool or the flat side of a tool handle, press the window lift motor connector into the door.

**NOTE:** Do not disconnect at this time.



**STEP 7:** Lower the door glass so that you can remove the two (2) bolts attaching the window glass to the window regulator.

**STEP 7a:** Once the door glass is separated from the window regulator, hold the door glass in the up position with either a saddle cup assembly, tape, or wedge.

Disclaimer:

Even though every attempt is made to ensure this information is complete and accurate, it is impossible to account for all possible circumstances or situations. Please consult with a qualified auto technician before attempting to perform any work you are not qualified to do. Automobiles can be hazardous to work on; be sure to take all necessary safety precautions. Failure to do so may result in property damage or personal injury. Certain motor vehicle standards and performance requirements may apply to your motor vehicle (such as Federal Motor Vehicle Safety Standards by the National Highway Traffic Safety Administration). Be sure that your work is performed in accordance with such standards and that you do not disable any motor vehicle safety feature.

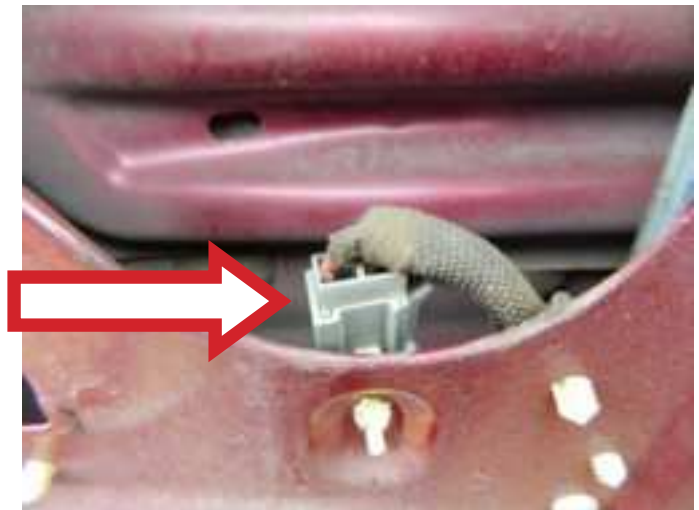
©2011 Dorman Products, Inc.

No reproductions in whole or in part without prior written approval.

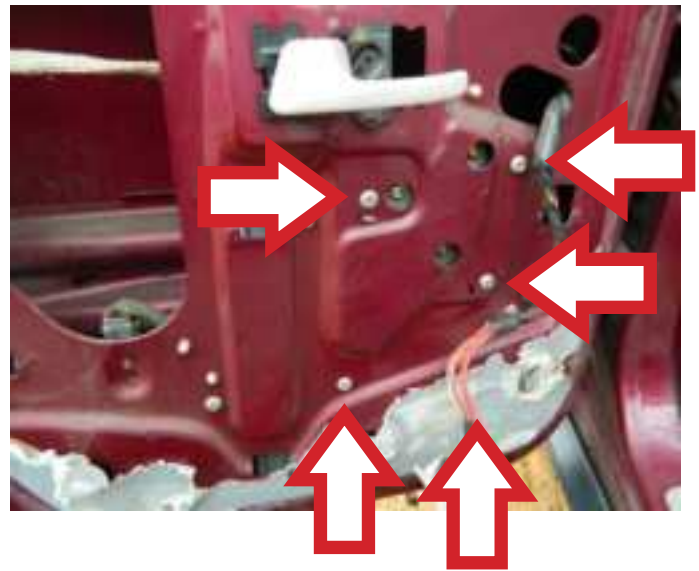
## INSTALL/ REMOVAL INSTRUCTIONS: WINDOW REGULATOR

**ATTENTION:** Refer to the appropriate shop manual for your vehicle to obtain specific service procedures for this part. If you do not have a service manual or lack the skill to install this part, it is recommended that you seek the services of a qualified technician. Pay special attention to all cautions and warnings included in the shop manual. Read and follow all instructions carefully.

**STEP 8:** Disconnect the power window motor connector.



**STEP 9:** Starting with a 3/8" drill bit, drill the head of the rivets. **NOTE:** DO NOT DRILL ALL THE WAY THROUGH THE RIVET. AT THIS POINT YOU ARE ONLY REMOVING MATERIAL FROM THE HEAD OF THE RIVET.



**STEP 9a:** Drill out the remaining body of the rivet with an 1/8" drill bit. **NOTE:** BE SURE TO HOLD THE DRILL BIT STRAIGHT. YOU DO NOT WANT TO MAKE THE HOLES IN THE DOOR OBLONG.

Disclaimer:

Even though every attempt is made to ensure this information is complete and accurate, it is impossible to account for all possible circumstances or situations. Please consult with a qualified auto technician before attempting to perform any work you are not qualified to do. Automobiles can be hazardous to work on; be sure to take all necessary safety precautions. Failure to do so may result in property damage or personal injury. Certain motor vehicle standards and performance requirements may apply to your motor vehicle (such as Federal Motor Vehicle Safety Standards by the National Highway Traffic Safety Administration). Be sure that your work is performed in accordance with such standards and that you do not disable any motor vehicle safety feature.

©2011 Dorman Products, Inc.

No reproductions in whole or in part without prior written approval.



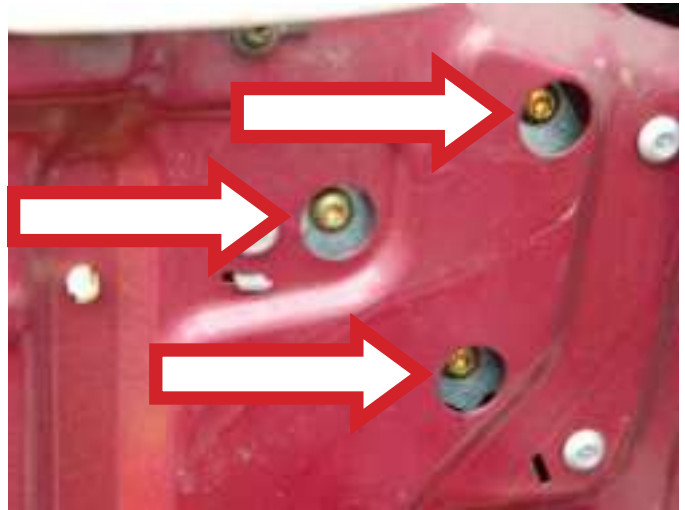
## INSTALL/ REMOVAL INSTRUCTIONS: WINDOW REGULATOR

**ATTENTION:** Refer to the appropriate shop manual for your vehicle to obtain specific service procedures for this part. If you do not have a service manual or lack the skill to install this part, it is recommended that you seek the services of a qualified technician. Pay special attention to all cautions and warnings included in the shop manual. Read and follow all instructions carefully.

**STEP 10:** Remove the window regulator through the access hole.



**STEP 11:** Remove the three (3) window lift motor attaching screws. **NOTE:** Some of the window lift motors were attached with a Phillips head screw, while others were attached with a T-25 Torx bit. You can tell this by looking at the bolts through the hardware access screws.



Disclaimer:

Even though every attempt is made to ensure this information is complete and accurate, it is impossible to account for all possible circumstances or situations. Please consult with a qualified auto technician before attempting to perform any work you are not qualified to do. Automobiles can be hazardous to work on; be sure to take all necessary safety precautions. Failure to do so may result in property damage or personal injury. Certain motor vehicle standards and performance requirements may apply to your motor vehicle (such as Federal Motor Vehicle Safety Standards by the National Highway Traffic Safety Administration). Be sure that your work is performed in accordance with such standards and that you do not disable any motor vehicle safety feature.

©2011 Dorman Products, Inc.

No reproductions in whole or in part without prior written approval.

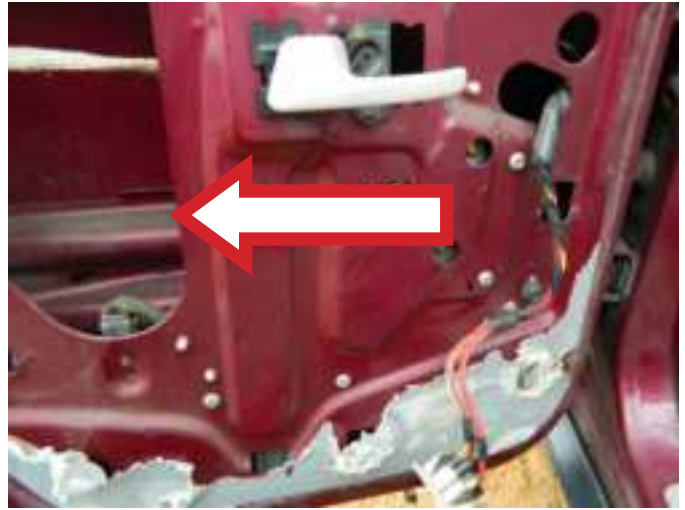
## INSTALL/ REMOVAL INSTRUCTIONS: WINDOW REGULATOR

**ATTENTION:** Refer to the appropriate shop manual for your vehicle to obtain specific service procedures for this part. If you do not have a service manual or lack the skill to install this part, it is recommended that you seek the services of a qualified technician. Pay special attention to all cautions and warnings included in the shop manual. Read and follow all instructions carefully.

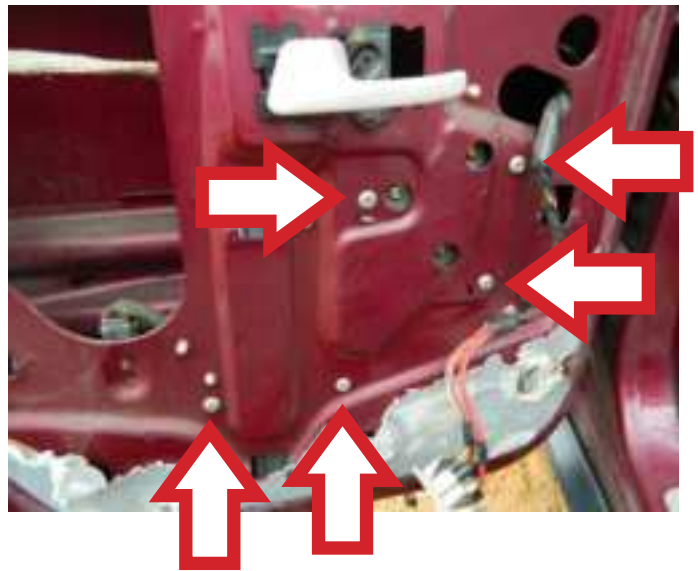
## Installation Instructions

**STEP 1:** Attach the three (3) window lift motor attaching screws.

**STEP 1a:** Place the window regulator through the access hole.



**STEP 2:** Using a rivet gun and rivets, attach the window regulator to the door.



Disclaimer:

Even though every attempt is made to ensure this information is complete and accurate, it is impossible to account for all possible circumstances or situations. Please consult with a qualified auto technician before attempting to perform any work you are not qualified to do. Automobiles can be hazardous to work on; be sure to take all necessary safety precautions. Failure to do so may result in property damage or personal injury. Certain motor vehicle standards and performance requirements may apply to your motor vehicle (such as Federal Motor Vehicle Safety Standards by the National Highway Traffic Safety Administration). Be sure that your work is performed in accordance with such standards and that you do not disable any motor vehicle safety feature.

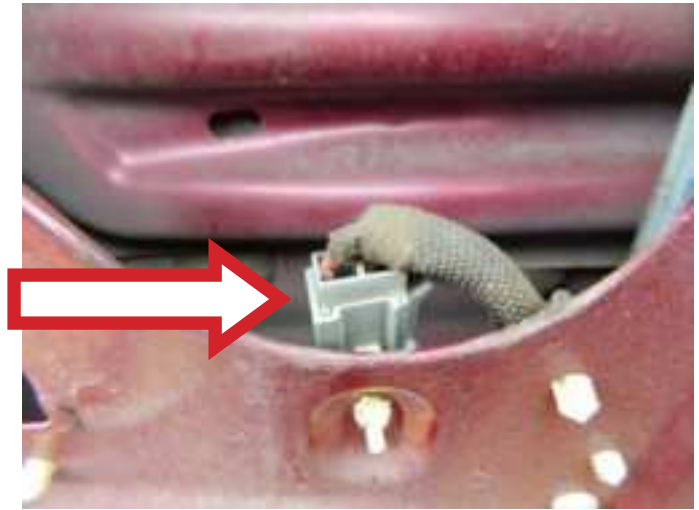
©2011 Dorman Products, Inc.

No reproductions in whole or in part without prior written approval.

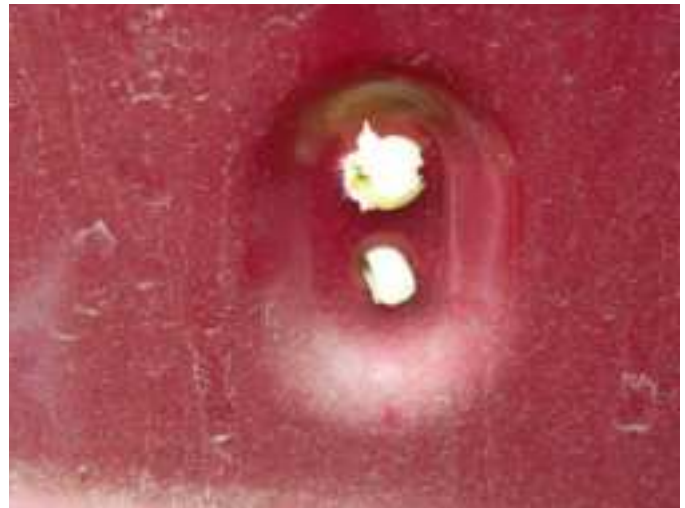
## INSTALL/ REMOVAL INSTRUCTIONS: WINDOW REGULATOR

**ATTENTION:** Refer to the appropriate shop manual for your vehicle to obtain specific service procedures for this part. If you do not have a service manual or lack the skill to install this part, it is recommended that you seek the services of a qualified technician. Pay special attention to all cautions and warnings included in the shop manual. Read and follow all instructions carefully.

**STEP 3:** Connect the window lift motor.



**STEP 3a:** Attach the window lift motor connector to the door.



**STEP 4:** Attach the window glass to the regulator. **NOTE:** It may be necessary to raise the window regulator into position.

Disclaimer:

Even though every attempt is made to ensure this information is complete and accurate, it is impossible to account for all possible circumstances or situations. Please consult with a qualified auto technician before attempting to perform any work you are not qualified to do. Automobiles can be hazardous to work on; be sure to take all necessary safety precautions. Failure to do so may result in property damage or personal injury. Certain motor vehicle standards and performance requirements may apply to your motor vehicle (such as Federal Motor Vehicle Safety Standards by the National Highway Traffic Safety Administration). Be sure that your work is performed in accordance with such standards and that you do not disable any motor vehicle safety feature.

©2011 Dorman Products, Inc.

No reproductions in whole or in part without prior written approval.



## INSTALL/ REMOVAL INSTRUCTIONS: WINDOW REGULATOR

**ATTENTION:** Refer to the appropriate shop manual for your vehicle to obtain specific service procedures for this part. If you do not have a service manual or lack the skill to install this part, it is recommended that you seek the services of a qualified technician. Pay special attention to all cautions and warnings included in the shop manual. Read and follow all instructions carefully.

**STEP 5:** Attach the water vapor barrier.



**STEP 6:** Place the power window switch through the opening on the interior door trim panel.



**STEP 7:** Place the interior door trim panel into position. **NOTE:** Align the interior door trim panel with its corresponding locations on the door. Be sure to verify that the interior door trim panel is sitting flush with the body of the door.

Disclaimer:

Even though every attempt is made to ensure this information is complete and accurate, it is impossible to account for all possible circumstances or situations. Please consult with a qualified auto technician before attempting to perform any work you are not qualified to do. Automobiles can be hazardous to work on; be sure to take all necessary safety precautions. Failure to do so may result in property damage or personal injury. Certain motor vehicle standards and performance requirements may apply to your motor vehicle (such as Federal Motor Vehicle Safety Standards by the National Highway Traffic Safety Administration). Be sure that your work is performed in accordance with such standards and that you do not disable any motor vehicle safety feature.

©2011 Dorman Products, Inc.

No reproductions in whole or in part without prior written approval.

## INSTALL/ REMOVAL INSTRUCTIONS: WINDOW REGULATOR

**ATTENTION:** Refer to the appropriate shop manual for your vehicle to obtain specific service procedures for this part. If you do not have a service manual or lack the skill to install this part, it is recommended that you seek the services of a qualified technician. Pay special attention to all cautions and warnings included in the shop manual. Read and follow all instructions carefully.

**STEP 8:** Install the door trim panel retaining screw.



**STEP 9:** Attach the door handle trim bezel.



**STEP 10:** Verify that the door trim panel is tight and that the window glass is operating smoothly. If necessary, use a silicone spray lubricant in the door glass channel.

**We appreciate your opinions regarding this product!**  
**Please call our Technical Assistant with any challenges or suggestions regarding the installation or operation of this product.**

**1-800-523-2492**

Disclaimer:

Even though every attempt is made to ensure this information is complete and accurate, it is impossible to account for all possible circumstances or situations. Please consult with a qualified auto technician before attempting to perform any work you are not qualified to do. Automobiles can be hazardous to work on; be sure to take all necessary safety precautions. Failure to do so may result in property damage or personal injury. Certain motor vehicle standards and performance requirements may apply to your motor vehicle (such as Federal Motor Vehicle Safety Standards by the National Highway Traffic Safety Administration). Be sure that your work is performed in accordance with such standards and that you do not disable any motor vehicle safety feature.

©2011 Dorman Products, Inc.

No reproductions in whole or in part without prior written approval.