

Installation Guide

AL30 & AL40 Series Smart Lock

Version: 2.0

Date: December 2019

Important Notes

- ❖ Please go through this Installation Guide carefully or call Customer Care before returning the product to the store.
- ❖ The contents of this installation guide may vary without any prior notices to improve the performance of our product.
- ❖ We highly recommend professional installation, in order to avoid any additional service charges that may be caused due to the improper installation of the product.
- ❖ On every installation, you must perform the initialization process just after the installation of this lock on any door as described in Initialization Procedure on page 7.
- ❖ Do not insert the batteries before installing the lock!

Need Help?

For technical documents and more

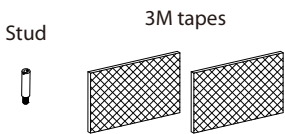
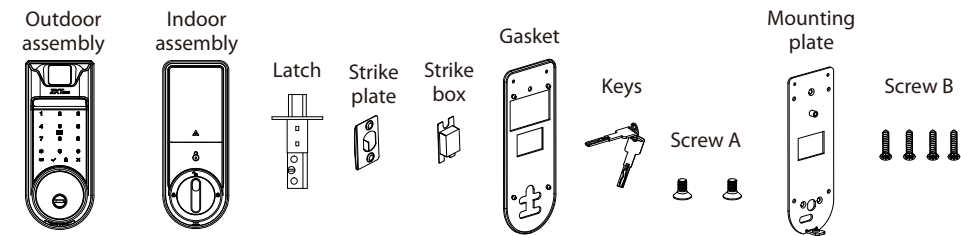
Please visit **www.zkteco.com/en**

Email: online@zkteco.com

Contents

What's in the box.....	1
Installation Diagram(AL30B).....	1
Installation Procedure.....	2
1. Setting up the door.....	2
2. Adjust the backset of the lock to 70mm (if needed).....	3
3. Latch Installation.....	3
4. Installation of Outdoor assembly.....	4
5. Installation of Mounting plate with Gasket.....	5
6. Installation of Indoor assembly.....	6
7. Verify Mechanical Unlock.....	6
8. Initialization of Lock.....	7
9. Mark and drill holes for the Strike box and Plate.....	8
FCC Warning.....	9

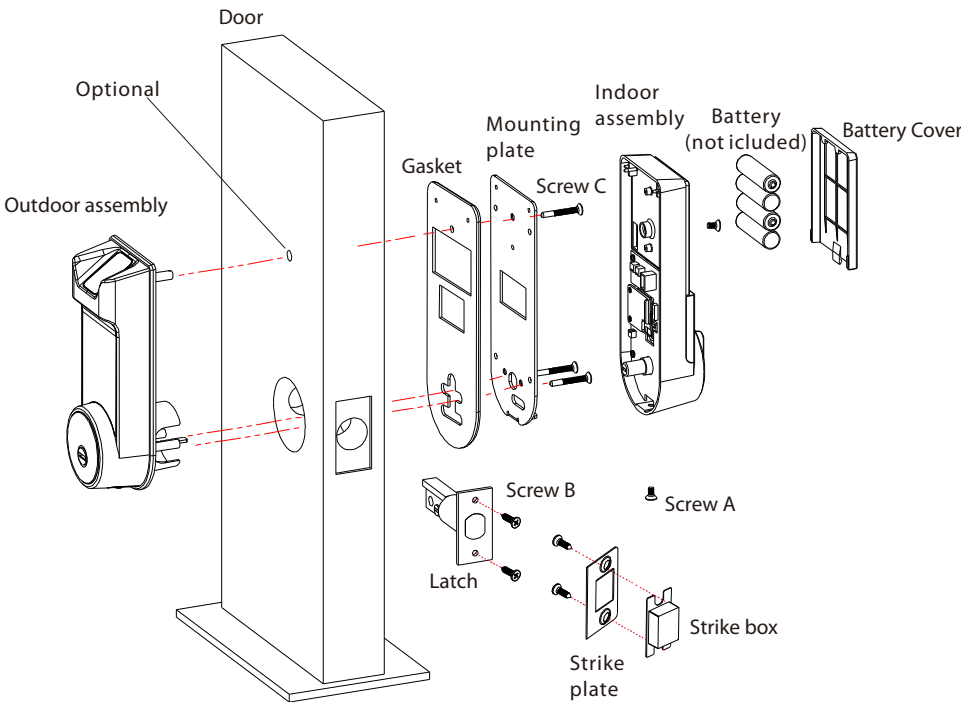
What's in the box



Note: Please use the appropriate set of C screws as per your door's thickness, to assure the proper functioning of the locks.

Screw C	Screw length	For door thickness
	16.5mm	35-40mm
	30mm	40-50mm
	35mm	50-53mm

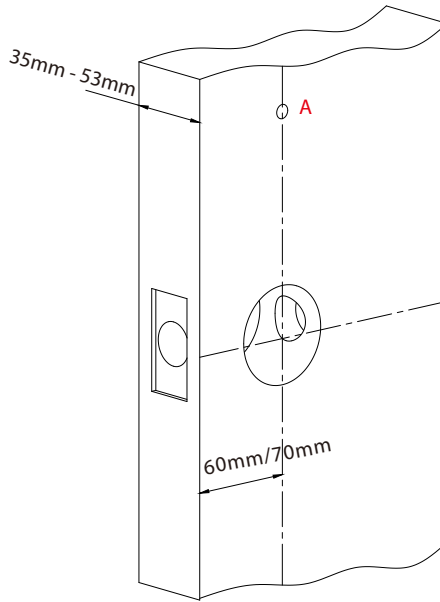
Installation Diagram (AL30B)



Installation Procedure

1. Setting up the door

- 1) Tape the Installation Template at the desired handle height.
- 2) Mark for the holes and drill the marked location.
- 3) The hole A doesn't need to be drilled if the lock will be fixed by 3M Tapes.



Important Notice

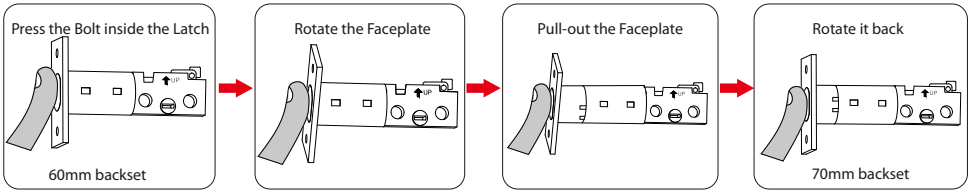


It is not required to drill hole on the door. To aid with the stabilization of the lock during installation we have already provided 3M Tapes in the kit. If you still wish to have added stability, drill for the hole by referring to the provided Templates.

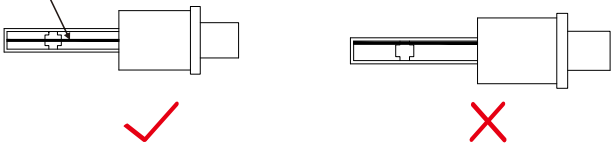
Make sure your door is set up as required, prior to installation. Please use the supplied Template for drilling holes if required.

2. Adjust the backset of the lock to 70mm (if needed)

Backset is the distance from the edge of the door to the center of the hole drilled on the door. The default Backset is 60mm, but if you want to change the Backset to 70mm, grasp body and twist the Faceplate as shown below:



By default, the metal shaft twists over the center as shown:



3. Latch Installation

1

Before installing the Latch, make sure the Latch Bolt is in **retracted(Unlocked)** position and the arrow is facing upwards.

A circular inset shows a close-up of the latch bolt. The bolt is in the retracted position, and an arrow on the faceplate points upwards, labeled "UP".

2

Secure the Latch by inserting the B screws.

The diagram shows two vertical door frames. A red arrow points from the left frame to the right frame, indicating the direction of the B screws being inserted into the latch mechanism.

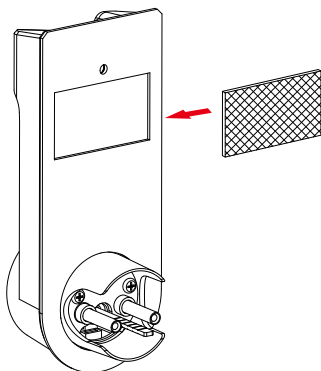
4. Installation of Outdoor assembly

There are two methods to install the Outdoor assembly.

❖ Method 1: Installing with 3M Tapes

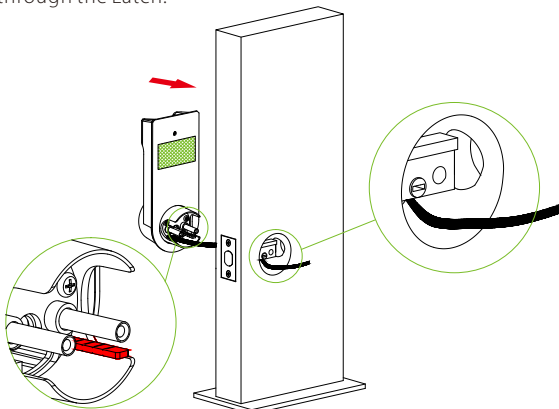
1

Paste a 3M Tape on the Mounting plate of Outdoor assembly.



2

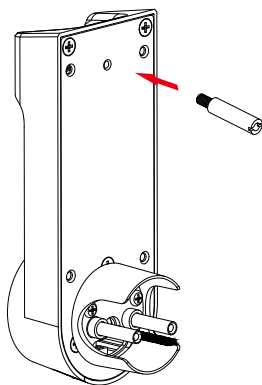
- 1) Make sure the highlighted Spindle is in the **horizontal** position, as shown.
- 2) Route the cable through the opening **below** the bolt.
- 3) Attach the Outdoor assembly to the door by inserting it through the Latch.



❖ Method 2: Installing with Stud

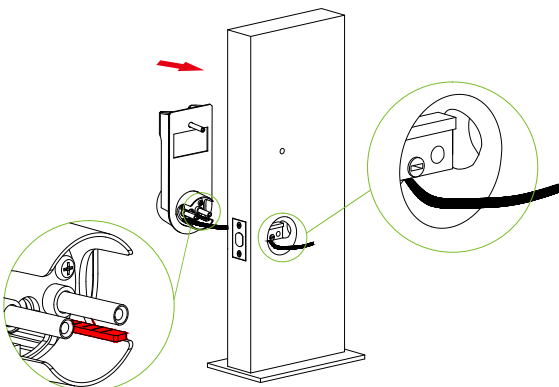
1

Move the Gasket away and fix the Stud on the Mounting plate of Outdoor assembly.



2

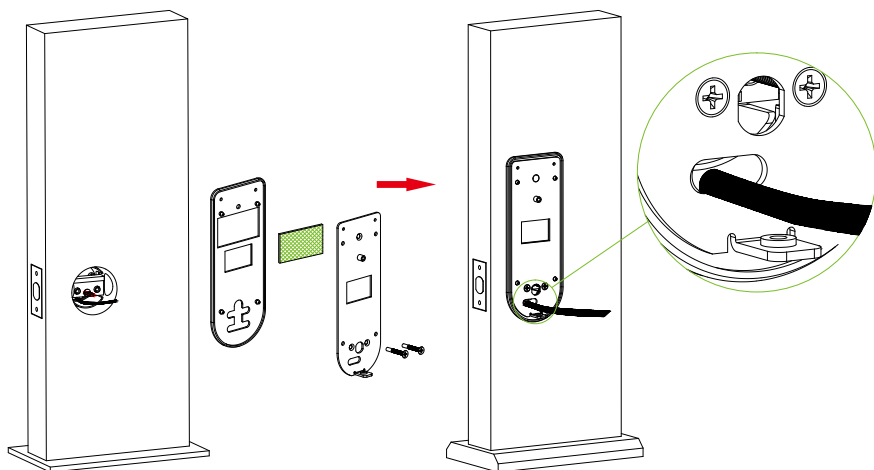
- 1) Make sure the highlighted Spindle is in the **horizontal** position, as shown.
- 2) Route the cable through the opening **below** the bolt.
- 3) Attach the Outdoor assembly to the door by inserting it through the Latch.



5. Installation of Mounting plate with Gasket

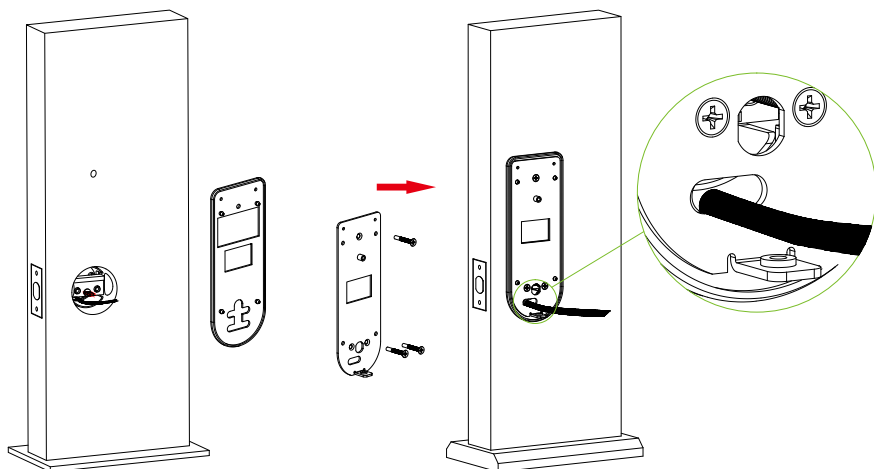
❖ Method 1: Installing with 3M Tapes

- 1) Paste a 3M Tape on the Mounting plate of Indoor assembly.
- 2) Attach the Mounting plate to the Gasket and route the cable through the hole on the Mounting plate and Gasket.
- 3) Place the Gasket and Mounting plate on to the door and use 2 C screws to secure them.



❖ Method 2: Installing with Stud

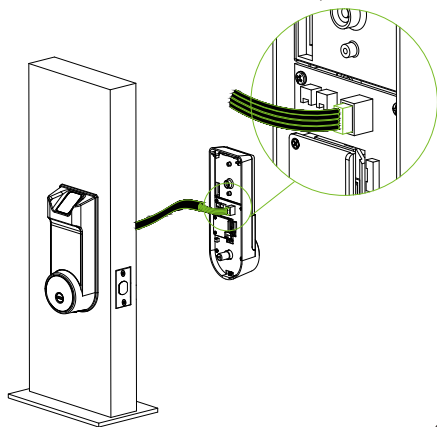
- 1) Attach the Mounting plate to the Gasket and route the cable through the hole on the Mounting plate and Gasket.
- 2) Place the Gasket and Mounting plate on to the door and use 3 C screws to secure them.



6. Installation of Indoor assembly

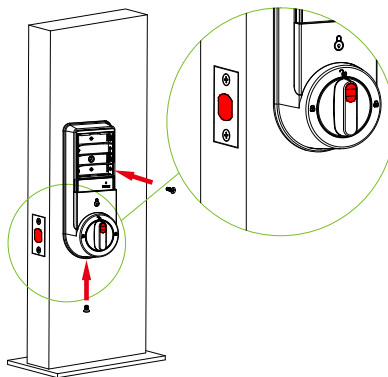
1

Connect the male cable to the female connector on the Indoor assembly.



2

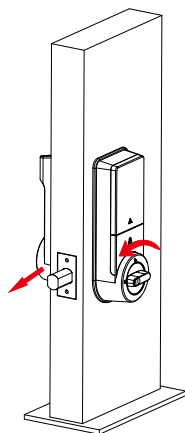
Place the Indoor assembly properly on the Mounting plate. Then use A screws to secure Indoor assembly. The Knob dot must be positioned in direction of Bolt.



7. Verify Mechanical Unlock

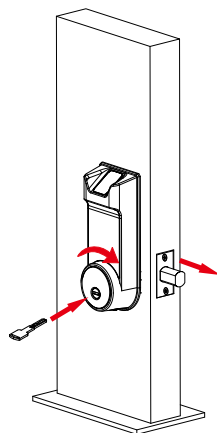
1

Rotate the Knob to check that Latch Bolt can be extended correctly or not.




2

Insert the Key and rotate to check that Latch Bolt can be extended correctly or not.



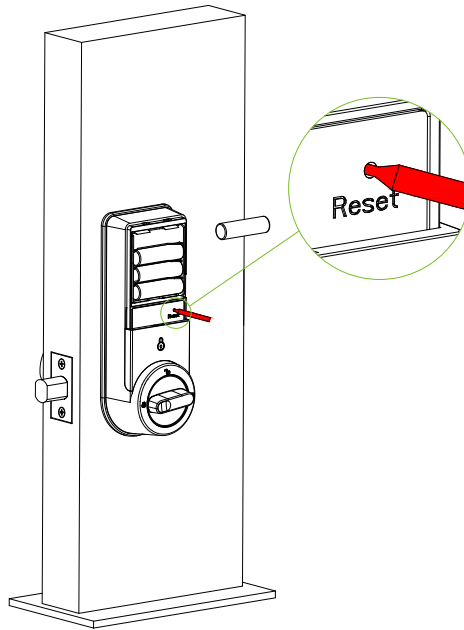
Notice: If the Knob or Key cannot control the Latch Bolt correctly, please read Installation Procedure carefully and re-install the Lock.

 **Warning:** Do not install the batteries until the proper installation of the lock!

8. Initialization of Lock

After installing the Lock, you must perform Initialization process, as explained in the steps below:

- 1) Rotate the Knob to make the Latch Bolt in the **extended** position.
- 2) First, insert just 3 batteries in the Lock.
- 3) Use a needle or a pin to **press** and **hold** the Reset Button.
- 4) Now, insert the last one battery, and do not release the Reset Button until the Lock prompts "Restore to default settings, wait a moment."
- 5) After 10 seconds, the Lock will prompt "Complete", which means the Initialization process is completed.



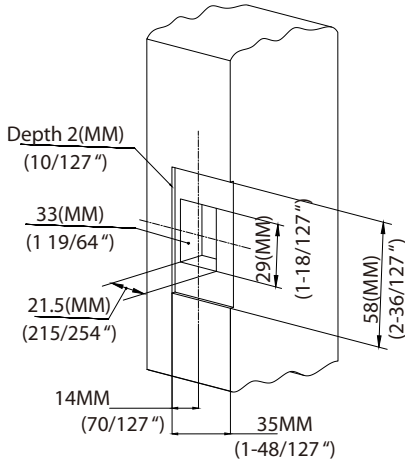
Notice:

1. This initialization will clear all the data and detect the appropriate lock direction.
2. You can also change the direction of the Lock manually by continuously pressing the Reset Button 5 times.
3. If the Installation of the latch is in the opposite direction to the default Lock setting, there would be a noise from the Motor after inserting the final battery. When this state occurs, perform the Initialization process again to solve the issue.
4. The initial Lock can be opened by any verification(Fingerprints, Passwords or Cards) until the first Administrator is registered.

9. Mark and drill holes for the Strike box and Plate

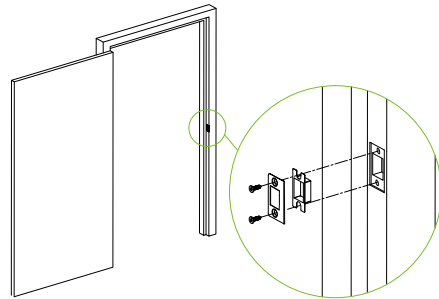
1

Make sure that the Strike box is in the level of Latch Bolt, then use Installation Template to drill holes.



2

Align the Strike box and Plate with the drilled hole and use B screws to secure them.





Warning:

Any Changes or modifications not expressly approved by the party responsible for compliance could void the user's authority to operate the equipment.

Note: This equipment has been tested and found to comply with the limits for a Class B digital device, pursuant to part 15 of the FCC Rules. These limits are designed to provide reasonable protection against harmful interference in a residential installation. This equipment generates uses and can radiate radio frequency energy and, if not installed and used in accordance with the instructions, may cause harmful interference to radio communications. However, there is no guarantee that interference will not occur in a particular installation. If this equipment does cause harmful interference to radio or television reception, which can be determined by turning the equipment off and on, the user is encouraged to try to correct the interference by one or more of the following measures:

- Reorient or relocate the receiving antenna.
- Increase the separation between the equipment and receiver.
- Connect the equipment into an outlet on a circuit different from that to which the receiver is connected.
- Consult the dealer or an experienced radio/TV technician for help.

The device has been evaluated to meet general RF exposure requirement. The device can be used in portable exposure condition without restriction.

This device complies with part 15 of the FCC Rules. Operation is following two conditions:

- (1) This device must accept any interference.
- (2) This device must accept any interference received, including interference that may cause undesired operation.

