



INDOOR UNIT



Note: There are multiple control options designed to address individual climate conditions. Please consult your local installer for the best installation controls for your climate.

ENERGY RECOVERY VENTILATOR

EC MOTOR



SPECIFICATIONS

Ventilation Type:

Static plate, heat and humidity transfer

Typical Airflow Range: 30–130 CFM**Unit is HVI Tested/Certified per CSA C439 Protocol:**

Using one L-30-G5 Core

Standard Features:

White painted cabinet
Line-cord power supply or hard wired to junction box (H)
Low-voltage circuit for controls
Unit may be mounted in any orientation
Cross-core differential pressure ports
Dial-A-Flow: balance and airflow adjustment
Variable speed
Boost-mode

Controls:

Onboard digital controller with independent variable speeds

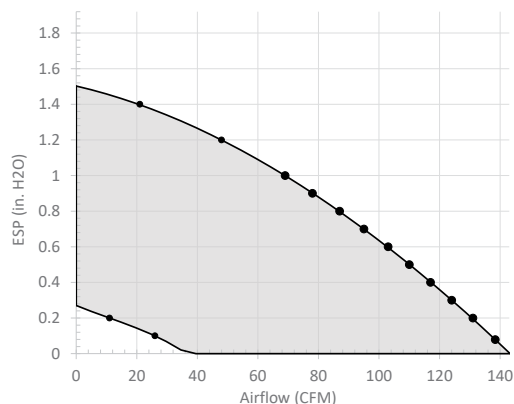
Filters:Total qty. 2, MERV 8, spun-polyester media:
7 1/2" x 10 1/2" x 1"**Unit Weight:** 35 lbs.**Max. Shipping Dimensions & Weight (in carton):**31 1/4" L x 22 3/8" W x 14 3/8" H
41 lbs.**Units Per Pallet:** 10**Motor(s):**

Qty. 2, 120V EC motorized impellers

Accessories:

Backdraft damper: 6", 8"
Automatic balancing damper: 4", 5", 6"
Motorized dampers: 6", 8"
Concentric vent: 6" (CV6-110)
Louvered wall vent 6": white, brown
Louvered wall vent 8": taupe vinyl, galvanized, paintable galvanized
Louvered wall vent with 8" round duct connection: 12" W x 8" H
Digital time clock: wall mount (TC7D-W), in exterior enclosure (TC7D-E)
Carbon dioxide sensor/control: wall mount (CO2-W)
IAQ sensor: wall mount (IAQ-W)
Motion occupancy sensor/control: ceiling mount (MC-C), wall mount (MC-W)
Push-button boost timer (PBT)
Percentage timer control (PTL)
Percentage timer control with furnace interlock (FM)
BACnet fan control: wall mount (BACNETFC-W)
Push-button point-of-use controls (PBL), PTL req'd.
MERV 13 filter: OA airstream (shipped loose)
Wall bracket kit
Electric duct heater: RH series (1–4 kW); designed for indoor ductwork installation only

EC MOTOR OPERATING RANGE AND CORE PERFORMANCE



● = Actual tested sample points

| = Operating curves, airflow is held constant as static pressure varies

Factory settings

1. High speed set to top curve
2. Low speed set to ~90CFM at 0.4 in. w.g. ESP

Airflow (CFM)	External Static Pressure (Inches Water Column)	Unit Power Consumption (Watts)	Sensible EFF%	Total EFF% Winter/Summer
Max. Speed				
138	0.10	135	62	54/36
131	0.20	134	64	55/38
125	0.30	133	65	57/40
117	0.40	132	66	59/42
110	0.50	131	68	60/44
102	0.60	129	69	62/46
95	0.70	126	71	64/48
87	0.80	123	72	66/51
78	0.90	119	74	68/53
68	1.00	114	76	70/56
49	1.20	102	79	75/61
21	1.40	64	85	81/69
Min. Speed				
26	0.10	11	84	80/68
11	0.20	9	87	83/72

Notes:

1. Watts is for the entire unit.
2. Airflow performance includes effect of clean, standard filter supplied with unit.
3. Refer to CORES for specific operating point electrical data.
4. These are core-only ratings and are not HVI certified. Total EFF% calculated at 35/33wb OA and 70/58wb RA (winter) and 95/78wb OA and 75/63wb RA (summer). HVI ratings apply to complete units only. This unit is HVI certified. See HVI certified ratings on pg. 46 of Single/Multi-Family Catalog and at hvi.org.

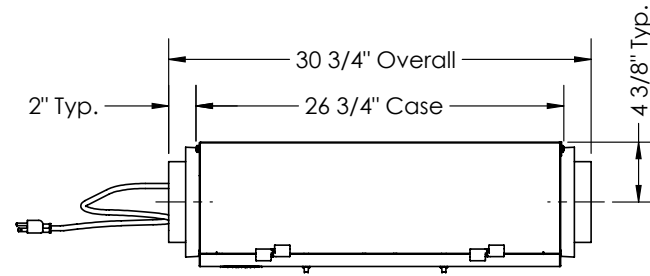
ELECTRICAL DATA

Watts	Volts	Hz	Phase	FLA per motor	Minimum Circuit Amps	Max Overcurrent Protection Device
53	120	60	1	0.85	15	15

SL75 ENERGY RECOVERY VENTILATOR EC MOTOR

Back to TOC

Subject to change without notice: RENEWAIRE.COM | 1.800.627.4499



TOP VIEW

ABBREVIATIONS

EA: Exhaust Air to outside
OA: Outside Air intake
RA: Room Air to be exhausted
SA: Supply Air to inside

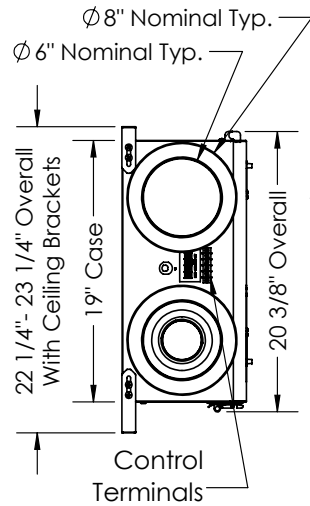
INSTALLATION ORIENTATION

Unit may be installed in any orientation.

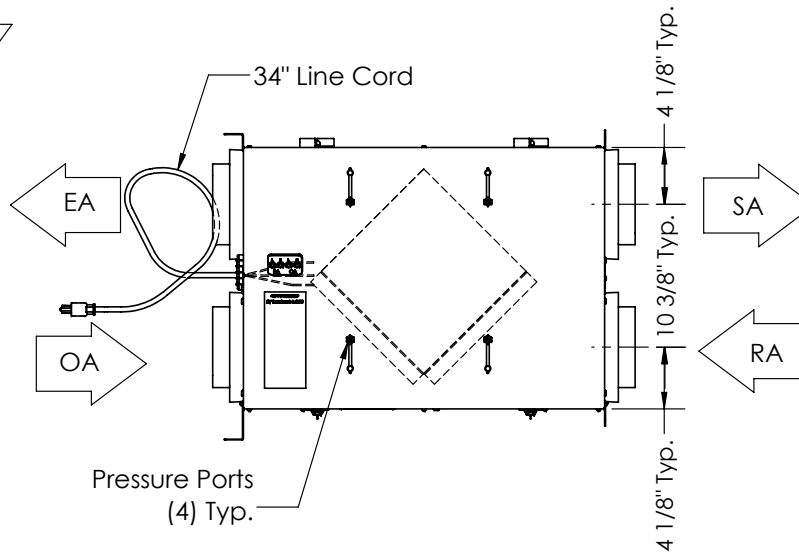
NOTE

1. UNLESS OTHERWISE SPECIFIED, DIMENSIONS ARE ROUNDED TO THE NEAREST EIGHTH OF AN INCH.

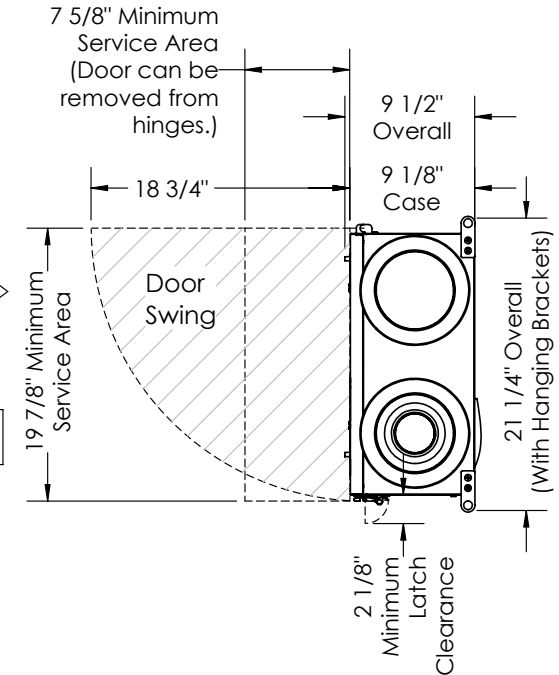
2. SPECIFICATIONS MAY BE SUBJECT TO CHANGE WITHOUT NOTICE.



LEFT VIEW
(Hard Mount Depicted)
(Line Cord Hidden)



FRONT VIEW



RIGHT VIEW
(Hanging Mount Depicted)



AIRFLOW ORIENTATION

Available as shown in dimension drawing.



UNIT MOUNTING & APPLICATION

Can be mounted in any orientation. RA/EA airstream can be switched with OA/SA airstream.