

HOW TO USE LX-Q3

User Guide

Motorcycle Bluetooth Speaker



LEXIN



V 3.0



Catalog

P01 Features

P02 Product
Packaging

P03 Installation
Instructions

P08 Basic
Operation

P11 Technical
Information

P12 Troubleshooting

P13 Maintenance
And Care

P14 Warranty



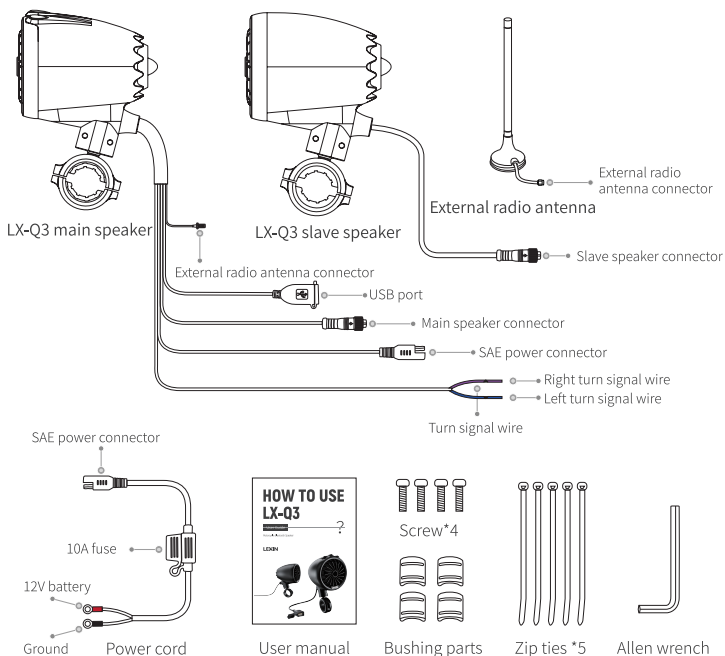
Features

- Heavy duty metal housing
- Bluetooth V5.1
- Unique built-in LED turn light
- 150W peak power output, premium stereo sound
- Plug-in-play audio system
- Built-in 3 inch full-range speaker
- Built-in FM radio
- 3 button control, easy operation
- IP67 waterproof design
- USB interface can be used for play music
- Fit for 7/8" to 1 1/4" handlebar
- Dual EQ sound mode, loud tune and bass enhancement
- Bluetooth music sharing



Product Packaging

- LX-Q3 speaker (Main and slave speaker)
- Screw x 4
- Power cord x1
- User manual
- Zip ties x5
- Bushing parts x4
- Antenna x1
- Allen wrench x1



Installation Instructions

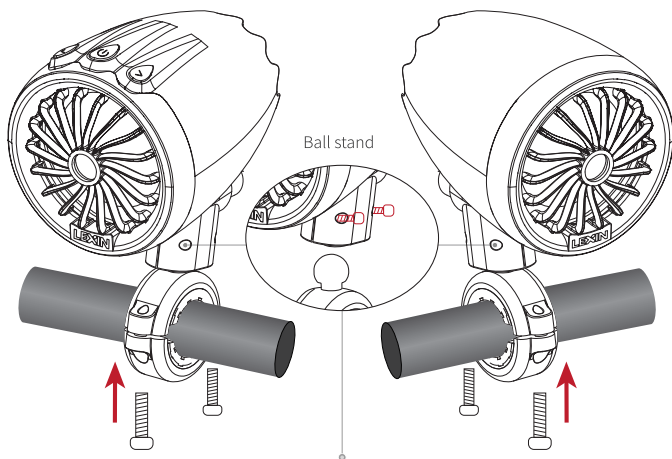
⚠ Before installation, please connect the power cord or the SAE connector to the 12V power source to test the speaker first.

Step ① Install the speakers :

Choose a suitable location to install the speakers, Use the appropriate bushing and screws to mount the speakers on the handlebar. The main speaker is installed on the left side of the motorcycle, and the slave speaker is installed on the right side of the motorcycle.

Main speaker (On the left side)

Slave speaker (On the right side)

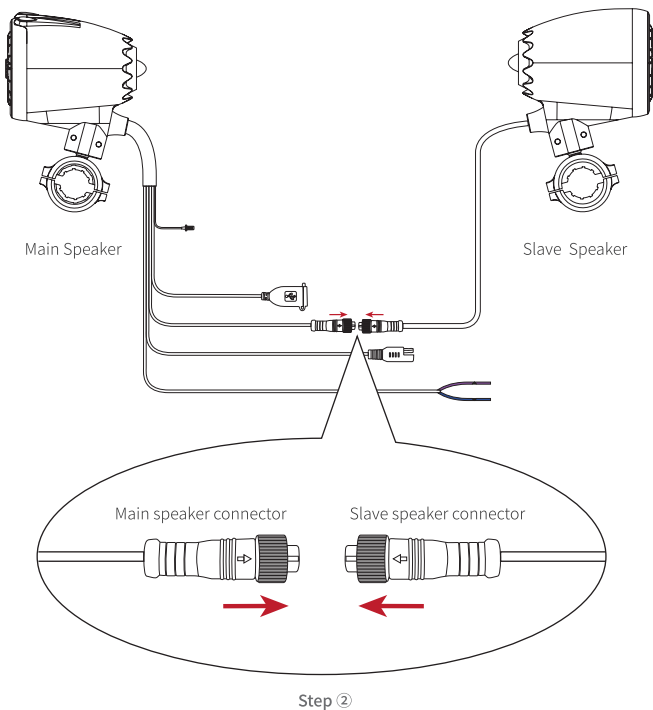


Note: There are two screws in the base of the speaker, you can use the Allen Wrench to loosen the screws to adjust the angle of the speaker, and then tighten it.

Step ①

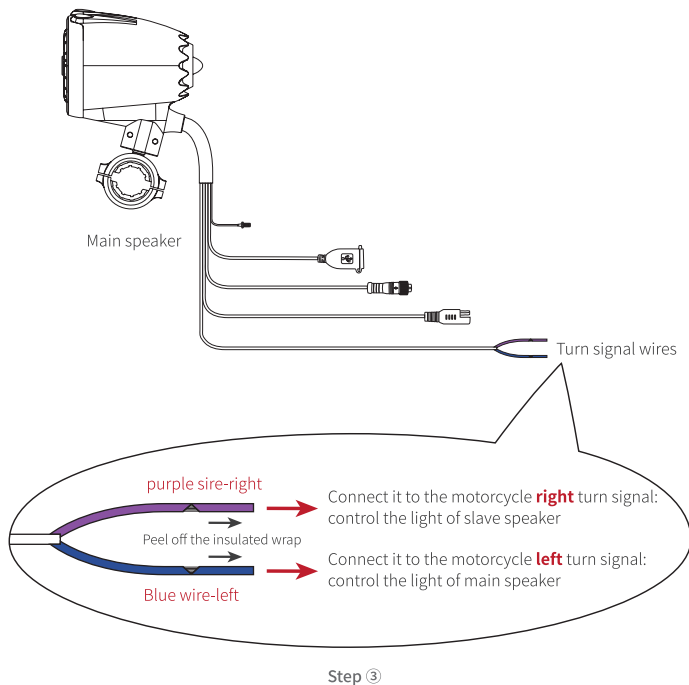
**Step ② connect the speakers:**

Plug the speaker connector of the main speaker to the slave speaker, and please pay attention that the two arrows on each connector indicate the right connection.



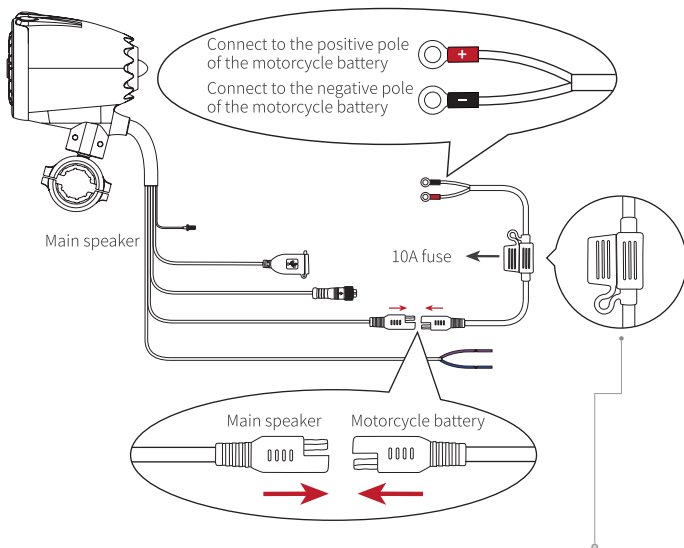
**Step ③ connect to the turn signal light:**

Peel off the insulated wrap of the **purple (right)** and **blue (left)** wires, and then connect it with the turn signal from the motorcycle. Pay attention to the correct connection of the left and right turn signals.



**Step ④ connect SAE power source:**

Connect the red terminal of the power cord to the positive pole of the motorcycle battery, and the black terminal to the negative pole of the motorcycle battery, plug the SAE connector into the SAE connector of the main speaker, and then tie the excess cables together and hide them.

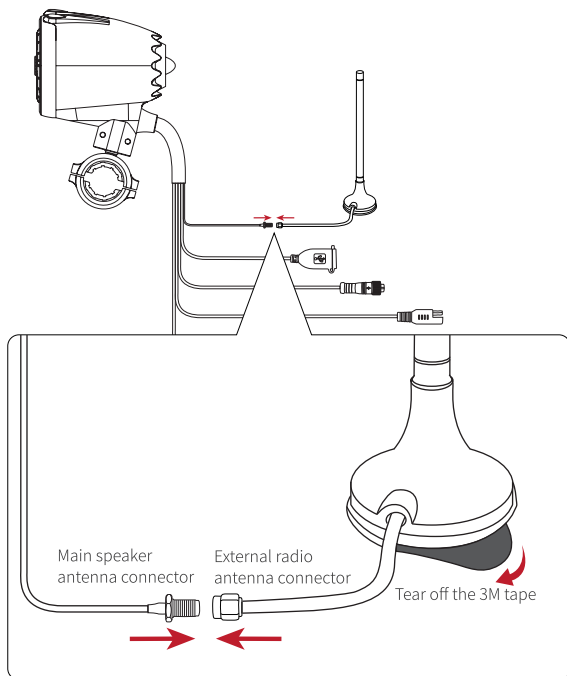


Note: If the speaker cannot power on normally, please check whether the fuse is burned out. If so, please disconnect the power supply of the speaker, and replace a new fuse, then reconnect the power supply and it will work again.

Step ④

**Step ⑤ Install FM radio antenna:**

Connect the external radio antenna to the antenna connector on the main speaker. Find a place to locate the antenna with 3M tape on the motorcycle, and extend the external antenna for FM reception when used.

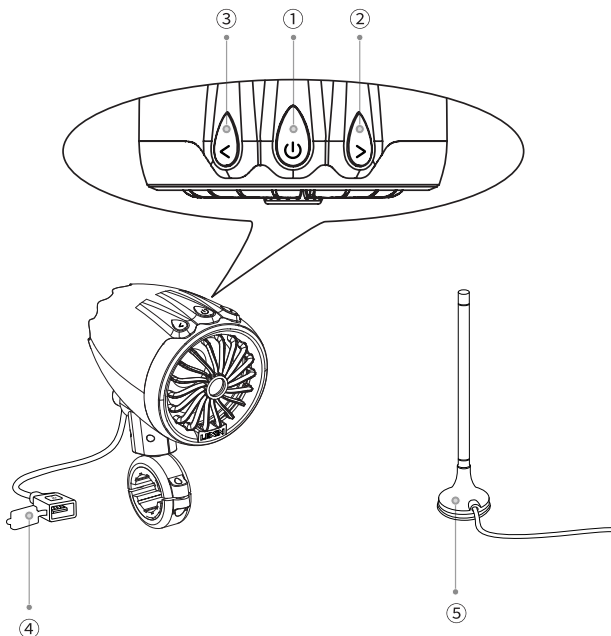


Step ⑤



Basic Operation

- ① “**⏻**” (**P Button**): Power On/Off, Switch mode, Pause/play music, FM Automatic searching
- ② “**>**” (**V+ Button**): Volume up, Previous track, Scan up, Turn On/Off Light
- ③ “**<**” (**V- Button**): Volume down, Next track, Scan down, Switch sound effects
- ④ **USB port**
- ⑤ **External radio antenna**



**Power on**

Press and hold the Power Button for about 1 second, The speaker will report "Bluetooth Mode" and enter pairing mode. The indicator light will flash green and blue simultaneously for 1 second.

Note:

1. When power on, the device will default to Bluetooth mode and automatically enter the Bluetooth pairing mode, the blue indicator light will flash quickly. After the pairing is completed, the blue indicator light will fade in and out.
2. Every time you turn on the speaker, it will automatically search and connect with the last paired device.

Power off

Press and hold the Power Button for about 3 seconds, The speaker will report "Power Off" and the indicator light will keep flashing blue for 1 second then turn off.

Switch mode

Double click the Power Button to cycle switch three modes between Bluetooth / FM / USB Music with voice prompt.

Dual bluetooth mode

LEXIN Q3 can connect with up to two different Bluetooth devices at the same time.

- Turn off the Bluetooth on the first paired device, and it will automatically enter into pairing status.
- Turn on the Bluetooth of the second mobile phone or other audio sources, search for LX-Q3, and then click it for pairing, the LED light will flash blue quickly.
- After the pairing is completed, the blue LED light will fade in and out.

Note: If the speaker is not connected to a device within 5 minutes, the system will automatically power off.

USB mode

When power on, double-click the Power Button to switch to the USB mode, and the LED light will turn to Green, then plug the USB drive with



audio source into the USB port.

Note: While in USB mode, the speaker will automatically shut down after 15 minutes if you pause the music. It is recommended that the USB disk only stores audio files.

FM radio mode

When power on, double-click the power button to switch to the FM radio mode, and the LED light will turn to Green, single click the power button to enter the automatic searching mode, and it will automatically save the radio station.

Music control

Click the Volume Up Button for the previous song, click the Volume Down Button for the next song. In FM radio mode, click the Volume Up Button to track forward, click the Volume Down Button to track backward. Click the Power Button to pause or play music.

Volume control

Press and hold the Volume Up Button to increase the volume, press and hold the Volume Down Button to reduce the volume.

Note: Volume control is only effective while music and FM radio is playing.

Turn signal/running lights

Running light: Double click the Volume Up Button to turn on/off the running light.

Turn signal light: It is optional depending on if you connect the wire to the motorcycle turn signal.

Note:

1. The LED running light is on as a default setting.
2. When the turn signal wires are connected with the motorcycle, the running light will be automatically controlled by the motorcycle turn light signal.

Switch bass enhancement sound mode

When in USB and Bluetooth mode: Double click the Volume Down Button to cycle change the EQ sound mode between Loud Tune and Bass



Enhancement. The default mode is Loud Tune for outdoor use, and the last setting will not be set in memory.

Power saving mode

The system will automatically shut down after 5 minutes in the standby mode if no operation.

Bluetooth music sharing mode

In Bluetooth mode, 2 sets of Q3 speakers will simultaneously play the same music through the connected mobile phone.

Turn on music sharing mode

When the 2 sets of Q3 speakers are both in Bluetooth standby mode, triple click the power button of the first Q3 main speaker, it will automatically search and connect with the second Q3 speaker.

After the two Q3s are connected, the first Q3 speaker can stream music and control the full functions, such as play and pause the music, volume up and volume down, and change songs. While the second Q3 speaker can only control the volume up and volume down.

Turn off music sharing mode

Triple-click the power button to turn off the Music Sharing mode.

Note:

1. The music sharing function is only applicable when you have 2 sets of Q3 speakers.
2. The music sharing function can only be used in Bluetooth mode.

Technical Information

- Bluetooth : V5.1
- Input power: DC12V
- Class D digital amplifier: 2*25W
- Width*Height*Depth =90*173*122 MM
- Frequency response range: 80--16000Hz
- Audio source type: Bluetooth, FM, USB_HOST
- Peak power: 150W
- Signal-to-noise ratio: >80dB



Troubleshooting

Problem	Troubleshooting
Unable to boot	<ol style="list-style-type: none">1. Please check whether the audio power cord is correctly connected to the motorcycle battery;2. Please check whether the motorcycle battery voltage drops below 10V;3. Please check whether the fuse is burned out. If it burns out, disconnect the audio power supply, remove the broken fuse, and then replace it with a new one.
No sound	<ol style="list-style-type: none">1. Please check whether the speaker has been connected to the mobile phone;2. Please check if the audio volume is set to the lowest, try to increase the volume;3. Please check whether there are audio files stored in the USB Drive.
Unable to connect or pair with Bluetooth device	<ol style="list-style-type: none">1. Please check whether the speaker is in Bluetooth pairing mode;2. Please check whether the Bluetooth option of the mobile device has been turned on.
Sound is distorted or cut in and out	<ol style="list-style-type: none">1. Please confirm whether the audio file is damaged, try to change to another music;2. Keep away from high-power electronic interference sources;3. Try to bypass the power cord and keep it away from the motorcycle engine when install the speaker;4. Whether the distance between the speaker and the mobile phone equipment exceeds 10 meters;5. Please check whether the motorcycle battery voltage drops below 10V.

Maintenance And Care

Please follow the following suggestions for optimal maintenance of LEXIN Q3 device and maintain warranty protection:

⚠ When cleaning the LEXIN Q3 external body, do not use a high-pressure water gun to wash the horn part, avoid to damage the horn;

⚠ It must be confirmed that the power supply voltage is consistent with the Q3 device before use it, please use it under a suitable voltage of 12V;

⚠ Do not use the Q3 device for a long time without power on the motorcycle's engine, to avoid running out the motorcycle battery, which will cause the voltage to be too low to start the motorcycle;

⚠ Do not install the power cord with wet hands to avoid electric shock

When replacing the fuse of the Q3 device, it should be replaced strictly according to the requirements, and it is strictly forbidden to use unqualified replaced fuse;

⚠ Do not store the device in a high temperature area or humid environment;

⚠ Do not store the device in cold temperature areas.

When the device returns to its normal temperature, moisture can form inside the device and damage electronic circuit boards.

⚠ Do not drop or knock the device. Rough handling can break internal circuit boards and fine mechanics.

⚠ Do not let metal conductive materials such as iron needles, hairpins, coins, etc, fall into the Q3 device to avoid damage to the device;

⚠ Do not use the Q3 device under overload or short circuit conditions;

⚠ Do not attempt to open the case of LEXIN Q3 device.

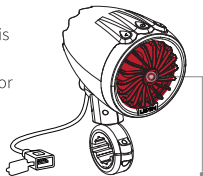
⚠ Do not use harsh chemicals, cleaning solvents, or strong detergents to clean the device.

⚠ Do not use or store the device in dusty or dirty environments. Moving parts and electronic components can be damaged.

⚠ Do not paint the device. Paint can clog the moving parts and prevent proper operation.

⚠ Pay attention to avoid the all the wire being stepped on and being crushed by heavy objects;

⚠ Do not forcefully pull, plug or twist the power cord.



Note: Do not use a high-pressure water gun to wash the horn part, avoid to damage the horn.



Warranty

LEXIN warrants that this product shall conform to and perform in accordance with published technical specifications and the accompanying written materials, and shall be free of defects in materials and workmanship, for a period of Two years from the date of purchase by the first consumer purchaser of the Product. The limited warranty extends only to the original consumer purchaser of the Product and is not assignable or transferable to any subsequent purchaser/end-user.

This warranty is limited to the repair or replacement, at LEXIN's discretion, of defective or non-conforming Product, and LEXIN shall not be responsible for the failure of the Product to perform specified functions, or any other non-conformance caused by or attributable to:

- (a) any misapplication or misuse of the Product;
- (b) failure of Customer to adhere to any of LEXIN's specifications or instructions;
- (c) neglect of, abuse of, or accident to, the Product; or
- (d) any associated or complementary equipment or software not furnished by LEXIN.

Limited warranty service may be obtained by delivering the Product to LEXIN or to the international distributor it was purchased through and providing proof of purchase or receipt date. Customer agrees to insure the Product or assume the risk of loss or damage in transit, to prepay shipping charges to LEXIN, and to use the original shipping container or equivalent.

LEXIN

#Hearthedifference





Lexin Electronics Inc.
1(800) 380 - 8248
www.lexin-moto.com

Backed by 2-Year Warranty
For technical support :
tech@lexinmotorcycle.com

   @lexinmoto



FR DE ES IT UK SE PL NL TR

**EMBALLAGES A SEPARER ET A DEPOSER
DANS LE BAC DE TRI**



FR DE ES IT UK SE PL NL TR

**CET APPAREIL, SES
ACCESSOIRES ET
CORDONS SE RECYCLENT**

À DÉPOSER
EN MAGASIN



À DÉPOSER
DÉCHÈTERIE

OU



Points de collecte sur www.quefairedemesdechets.fr
Privilégiez la réparation ou le don de votre appareil!