

Using smart switches

INSTRUCTIONS

Corston smart modules are designed with maximum versatility in mind, so you don't need to jump through hoops to use one. Here are some of the benefits of using a smart module in your home.

FEATURES

Separate circuit integration

Using our smart module, you can group circuits that aren't wired together. This means separate systems in the house can be used simultaneously, along with the module's "scene-setting function", to create pre-set lighting arrangements.

Automations

Automations enable you to preset specific conditions that trigger your lights, such as "turn off all the lights when I leave the house" or "at sunset, turn on all outside lights".

Dual control

When automation doesn't suit, you can still control the lights with both a toggle switch and your smart hub (through voice activation and your smartphone).

No third-party apps

Thanks to the integration of Matter in our modules, all devices are contained within your smartphone's control centre. Therefore, you don't need to install any extra apps to use our modules in your system.

Remote management

The pairing with your smart hub means everything can be controlled remotely, even from outside the house. This helps to save energy if lights are accidentally left on, for example.

Compatible with most smart hubs

Our smart modules communicate over Thread, meaning they don't use WiFi. Therefore, in order to operate, they require a Thread Border Router. There are many smart hubs available that have Thread Border Router support built-in. See opposite a list of the compatible devices.

COMPATIBLE DEVICES (last updated March 2025)

Amazon Alexa controllers

- Echo (4th Gen)
- Echo Show 8 (3rd Gen)
- Echo Hub
- Echo Studio
- Echo Studio (2nd Gen)
- Echo Plus (2nd Gen)
- Echo Show 10 (3rd Gen)
- Eero Beacon
- Eero Pro
- Eero 6
- Eero 6+
- Eero Pro 6
- Eero Pro 6E
- Eero PoE 6
- Eero PoE Gateway
- Eero Max 7

Apple Home controllers

- Apple TV 4K (2nd generation)
- Apple TV 4K Wi-Fi+Ethernet (3rd generation)
- HomePod (2nd generation)
- HomePod mini

Google Home controllers

- Nest Hub (2nd generation)
- Nest Hub Max
- Nest Wifi Pro
- Nest Wifi

SmartThings controllers

- SmartThings Hub (v3)
- SmartThings Station
- Aeotec Smart Home Hub

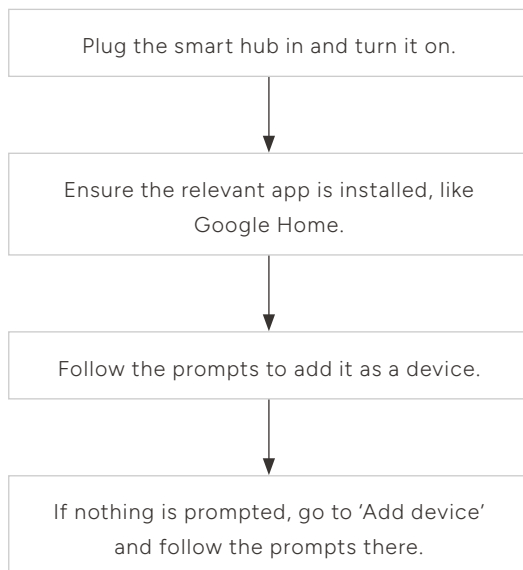
Other Thread Border Routers

- Nanoleaf Lines
- Nanoleaf Shapes
- Nanoleaf Elements
- Aqara Hub M3
- Tado Bridge X
- Tado Heat Pump Optimizer
- GL iNet GL-S200
- nami mesh sensor
- Harman Kardon Virtuo

Using smart switches

SETTING UP A SMART HUB

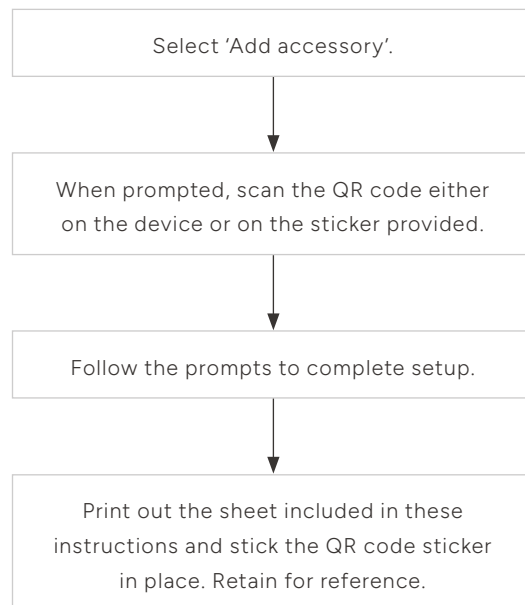
You may already have one of these in your home, so check the list on the previous page to check it's compatible. This will be the "brain" of your smart system, so it needs to be in place before using our module. The basic principle of setting up should be the same for most smart hubs, so if you don't have one in your home, setup will look something like this.



INSTALLING YOUR MODULE

Get a qualified electrician to wire in your module. Check the power is off at the consumer circuit before installation.

You only need one module per circuit. See the relevant instructions for your module (available on our website) for more information.



AUTOMATIONS & SCENES

Use your smart hub app to create combinations of variables and lighting arrangements. These might have other names depending on your preferred smart hub, for example "routines", "groups" or "timings". Follow the prompts on your device to explore these options. If you are unsure how to do this, get in touch with us.

DUAL CONTROL

Our modules can be paired with our retractive switches so your lights can be controlled from the wall. See our switches guide, available on our website, to find out more about how to install and maintain our switches.

Smart home QR codes

REFERENCE SHEET

Use this to keep track of the smart devices in your house by placing the QR code sticker provided in the areas below. The QR code on each sticker matches the one shown on the product it came with. Retain this sheet for future reference so the capabilities of the QR code are always easily accessible.

PROJECT/HOUSE NAME:

QR code goes here

Room: _____

Circuit: _____

Device: _____

Date: _____

Notes: _____

QR code goes here

Room: _____

Circuit: _____

Device: _____

Date: _____

Notes: _____

QR code goes here

Room: _____

Circuit: _____

Device: _____

Date: _____

Notes: _____

QR code goes here

Room: _____

Circuit: _____

Device: _____

Date: _____

Notes: _____

Smart home QR code reference sheet

QR code goes here

Room:

Circuit:

Device:

Date:

Notes:

QR code goes here

Room:

Circuit:

Device:

Date:

Notes:

QR code goes here

Room:

Circuit:

Device:

Date:

Notes:

QR code goes here

Room:

Circuit:

Device:

Date:

Notes: