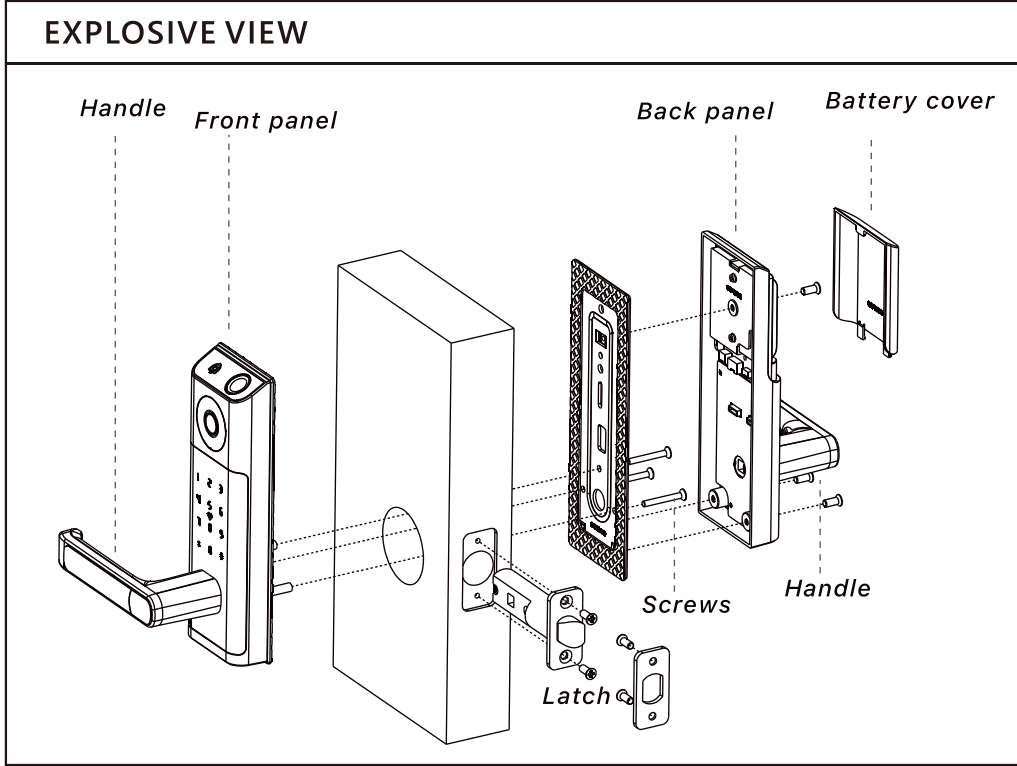


Installation Guide

WHAT'S INCLUDED			
Latch and strike	Exterior Assembly	Interior Assembly	Screws
			<div>Step 3</div> <div>Step 5</div> <div>Backup screws</div>
 Phillips headscrew driver Note: No drill needed			

PRODUCT OVERVIEW	
FRONT PANEL	BACK PANEL



1 Adjust the backset of latch (if needed)

A Hold the latch in front of the door hole, with the latch face flush against the door edge.

B If the latch holes are centered in the door hole, no adjustment is required. Proceed to step 2. If the latch holes are NOT centered, adjust latch. See "Latch Adjustment."

C Latch adjustment (**only if needed**)

2 Determin the direction before installing latch (standing outside the door)

A For right-handed door

B For right-handed door

C For left-handed door

D For left-handed door

Note: The square hole must be horizontal

3 Install latch

A

B

4 Install front panel and interior mounting plate

A

B

First, pass the connecting wire through the square hole of the liner plate, temporarily fix the ABC screw, adjust the liner plate, and fix the ABC screw after adjustment

Note: Do not tighten the two screws AB directly after being screwed on. Adjust the hole position of screw C and then tighten screw C and then screw AB

Note: Choose the screws that will fit the thickness of your door. Check labels on the screw bags.

8 Install the door handles

A

B

C

A

B

C

7 Install 4 AA batteries and battery cover

A inside

B inside

C inside

6 install back panel

A inside

B inside

5 Connect wire connector

A

B

Note: The wire connectors can only be connected in one way.

9 Insert the key and test the installation

A

B

C

D

IC Caution

-English:
This device complies with Industry Canada licence-exempt RSS standard(s). Operation is subject to the following two conditions:
(1) This device may not cause interference, and
(2) This device must accept any interference, including interference that may cause undesired operation of the device.
To maintain compliance with RSS-102 RF Exposure guidelines, this equipment should be installed and operated with minimum 20cm distance between the radiator and your body. Use only the supplied antenna.

-French:
Le présent appareil est conforme aux CNR d'Industrie Canada applicables aux appareils radio exempts de licence. L'exploitation est autorisée aux deux conditions suivantes:
(1) l'appareil ne doit pas produire de brouillage, et
(2) l'utilisateur de l'appareil doit accepter tout brouillage radioélectrique subi, même si le brouillage est susceptible d'en compromettre le fonctionnement.
Pour être conforme aux lignes directrices d'exposition RF RSS-102, cet équipement doit être installé et exploité à une distance minimale de 20cm entre le radiateur et votre corps: n'utilisez que l'antenne fournie.

FCC WARNING

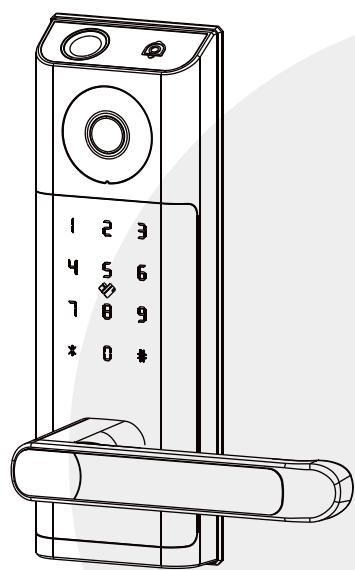
This device complies with part 15 of the FCC Rules. Operation is subject to the following two conditions: (1) this device may not cause harmful interference, and (2) this device must accept any interference received, including interference that may cause undesired operation.

Any changes or modifications not expressly approved by the party responsible for compliance could void the user's authority to operate the equipment.

NOTE: This equipment has been tested and found to comply with the limits for a Class B digital device, pursuant to Part 15 of the FCC Rules. These limits are designed to provide reasonable protection against harmful interference in a residential installation. This equipment generates, uses and can radiate radio frequency energy and, if not installed and used in accordance with the instructions, may cause harmful interference to radio communications. However, there is no guarantee that interference will not occur in a particular installation. If this equipment does cause harmful interference to radio or television reception, which can be determined by turning the equipment off and on, the user is encouraged to try to correct the interference by one or more of the following measures:

- Reorient or relocate the receiving antenna.
- Increase the separation between the equipment and receiver.
- Connect the equipment into an outlet on a circuit different from that to which the receiver is connected.
- Consult the dealer or an experienced radio/TV technician for help.

To maintain compliance with FCC's RF Exposure guidelines, this equipment should be installed and operated with minimum 20cm distance between the radiator and your body. Use only the supplied antenna.



User Guide

1. SMART LOCK OPERATION

BASIC DESCRIPTIONS

1. Press “RESET” key for 5s: Restore to factory default mode
2. Administrator information: Administrator fingerprint/password/IC card
3. Unlock information: include administrators and users
4. “*”: clear key and “#” confirm key

FACTORY DEFAULT MODE

1. The default administrator password is 123456, any fingerprint, password or IC card can open the lock in factory default mode.
2. After inputting the administrator information(it includes: fingerprints, passwords or IC cards), then add normal users.
3. If want to restore factory default, please press the reset button for 5 seconds.

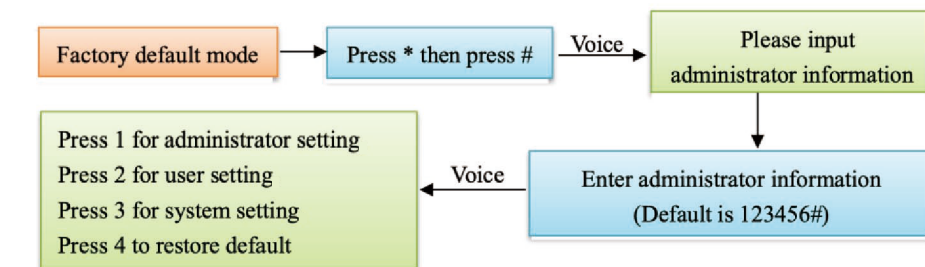
2. LANGUAGE SETTING (AT THE CONDITION OF FACTORY DEFAULT MODE)

The lock comes with "English" voice.

If you want to switch to other languages by following operations.

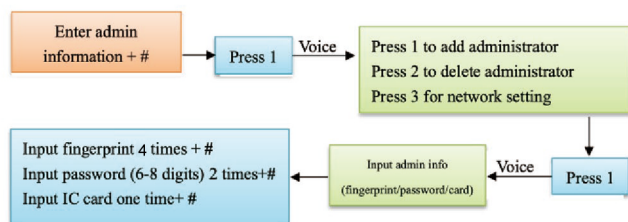
333666990#	Chinese
333666991#	English
333666992#	Arabic
333666993#	Russian
333666994#	Portuguese
333666995#	Thai
333666996#	Spanish
333666997#	Vietnamese
333666998#	Indonesian

3. ENTER SYSTEM MENU

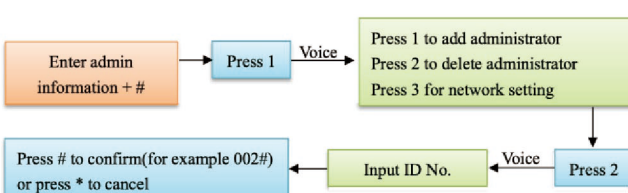


3.1 : ADMINISTRATOR SETTINGS

3.1.1) ADD ADMINISTRATOR INFORMATION



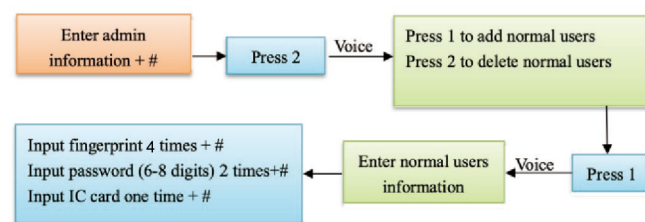
3.1.2) DELETE ADMINISTRATOR INFORMATION



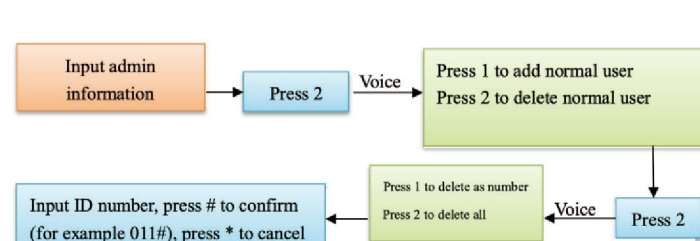
3.1.3) ABOUT NETWORK SETTING, PLEASE READ ITEM 4 BELOW

3.2 : NORMAL USERS SETTINGS

3.2.1) ADD NORMAL USERS

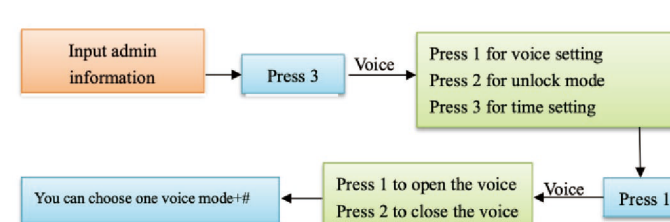


3.2.2) DELETE NORMAL USERS

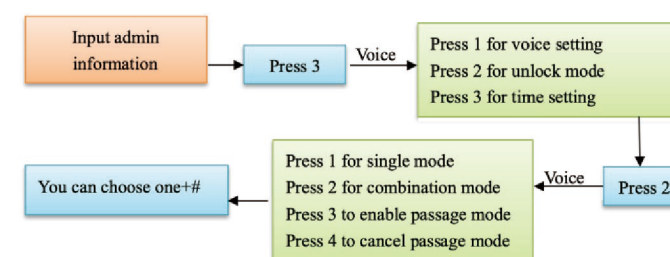


3.3: SYSTEM SETTINGS

3.3.1) VOICE SETTING

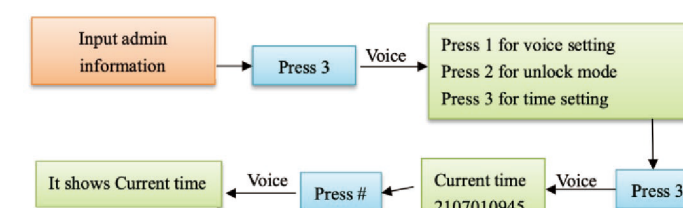


3.3.2) UNLOCK MODE SETTING



3.3.3: TIME SETTING

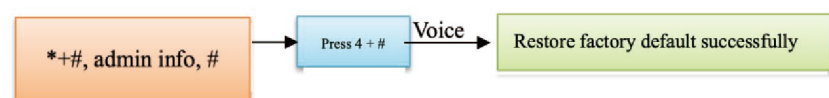
3.3.1) VOICE SETTING



Notes: the format of time is below:

Input new time. Time format is year-month-date-hour-minute.
For example 2107010945 refer to 2021-07-01 09:45

3.4: RESTORE FACTORY DEFAULT



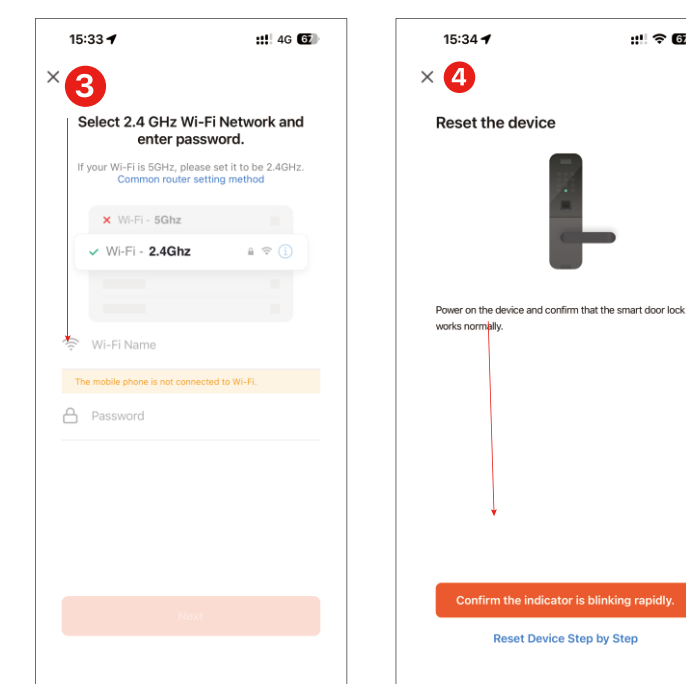
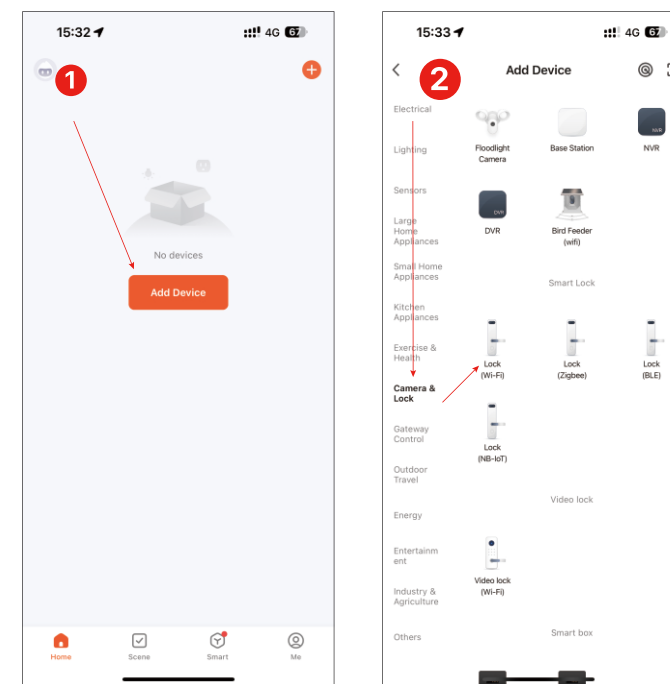
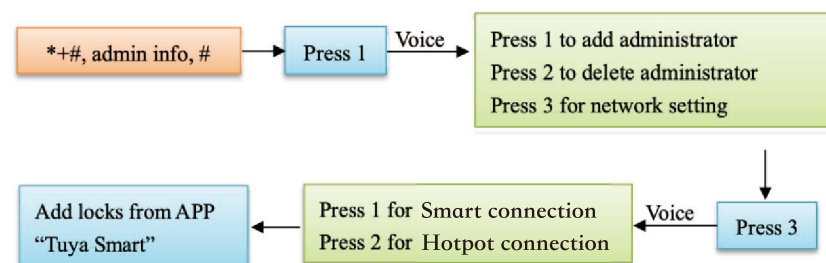
4. NETWORK PAIRING

4.1) PREPARATIONS:

4.1.1) Download the Tuya Smart app or scan below icon



- 4.1.2) Add locks and find Wifi locks
- 4.1.3) Choose 2.4Ghz and input your Wifi passwords
- 4.1.4) Make sure that LED flash on your lock
- 4.1.5) Choose Hotspot connection and waiting for pairing



5. FAQ

1. Inputting wrong finger or password more than 5 times in a row, the system will be locked for 1 minute.
2. Disguise password function: If you want input password 123456, you can input xxx123456xxx to avoid password to be cracked.
3. After battery voltage is down to 4.7V, the system will speak “Please replace battery” every time when unlocked. The lock can be unlocked for about 100 times. Please replace the battery as soon as possible.
4. When unlocking, Input 0+5+## to broadcast system time.
5. When unlocking, input 1# to broadcast the user ID.
6. When electronic dead lock is enabled, only administrator can open the lock.

PARAMETERS:

- ☆ Fingerprints:100 Users
- ☆ Fingerprints + Password + IC Card:300 Users Password length:6–8bits
- ☆ Power input:DC 4.4V–6.5V
- ☆ Low power alarm: 4.7V
- ☆ Standby current:<45uA
- ☆ Operation current:<250mA
- ☆ Working temperature:–20–65°C
- ☆ Working humidity:15%–95%
- ☆ Communication:WIFI
- ☆ APP: TUYA

After lock is set successfully, it will have message from phone when someone rang the doorbell.You can click the message for video talk, Slide to Refuse (refuse to unlock) or Slide to Agree (agree to unlock)

