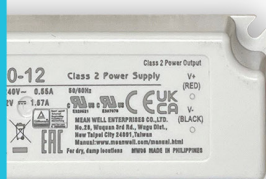
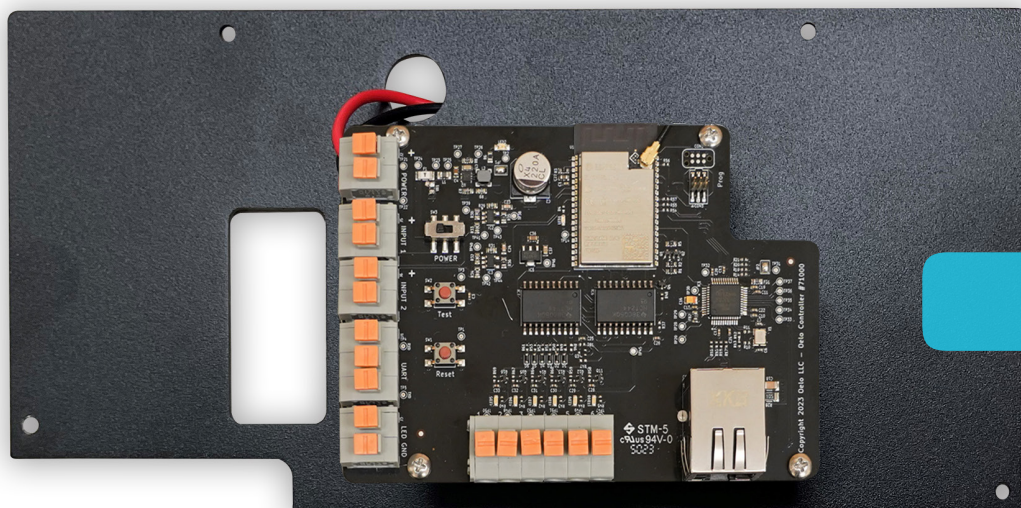


# OELO RETROFIT CONTROLLER MANUAL



Making the upgrade ...

COMPONENT REFERENCE .....	4
OLD CONTROL BOARD REMOVAL .....	5
NEW CONTROL BOARD INSTALLATION .....	6-9
THE FINISHING TOUCHES .....	10

# RETROFIT CONTROLLER INSTALLATION

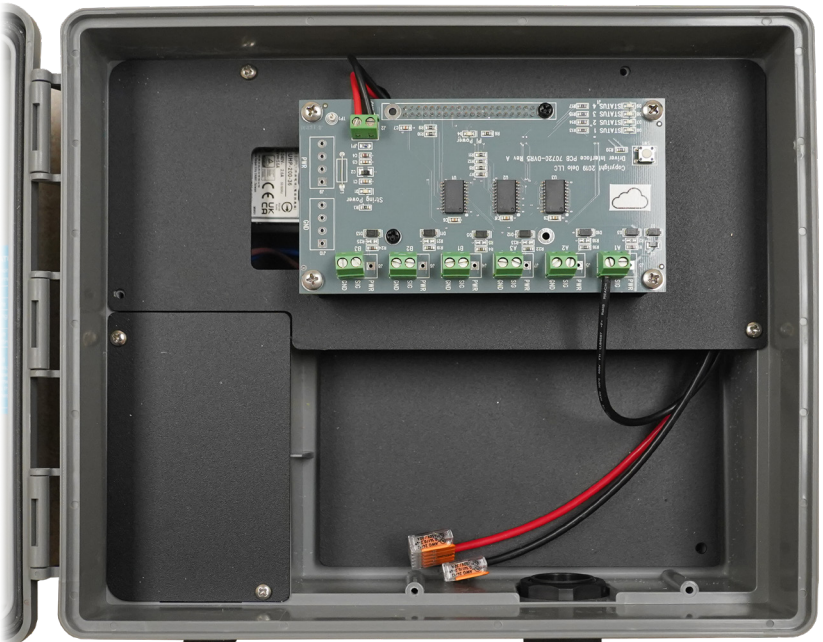
## THE OELO RETROFIT

Congratulations on your Oelo Controller Retrofit Kit purchase. This manual provides step-by-step instructions to help you update your controller to Oelo's latest technology.

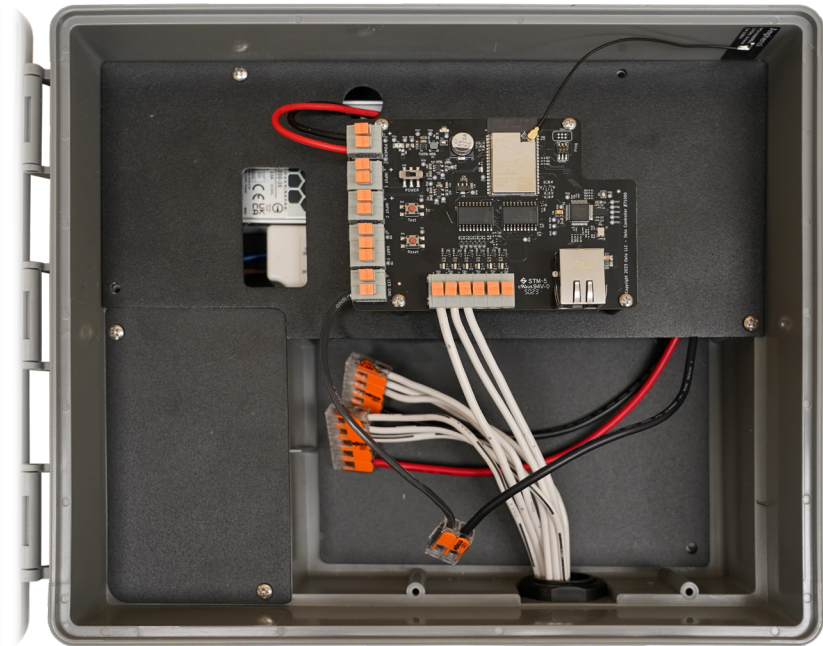
- Your new controller has the ability to power up to **300 lights** from a single control box (or more, if paired with an optional boost box)!
- Plus, your controller has **six (6!!) Individually controllable signal outputs**, which allows you to install six different zones from one controller for creative installs, like separate out-and-down sections and front and rear zones!
- Last but not least, the new controller works with the **new Oelo Evolution App!**

COMPONENT REFERENCE ..... 4  
OLD CONTROL BOARD REMOVAL..... 5  
NEW CONTROL BOARD INSTALLATION.....6-9  
THE FINISHING TOUCHES .....10

BEFORE

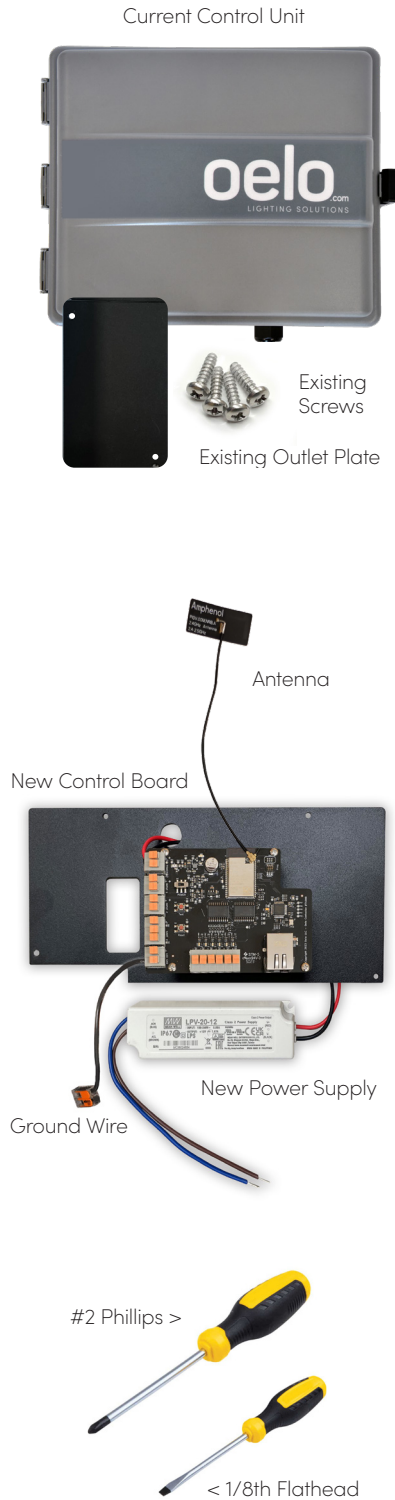


AFTER!





Below are key retrofit components you may want to familiarize yourself with before installing.



Existing Components

- CURRENT CONTROL BOX:** Your current Control Box will be used in the retrofit. (The new Control Board will replace your current Control Board within this box.)
- EXISTING CONTROL BOARD SCREWS:** The existing Control Board Screws, which hold the current Control Board / Metal Plate in the box, will be re-used to mount the new Control Board / Metal Plate.
- EXISTING OUTLET PLATE:** The existing Outlet Plate will be removed to access Power Supply wiring, then will be re-installed upon completion.

**WIRE, LIGHTS + CHANNEL:** The new Controller plugs directly into your existing wire, light and channel runs. (You can also decide to expand your system to add additional zones).

Retrofit Components

- NEW CONTROL BOARD:** The new Control Board is mounted to a metal plate (which screws into the Control Box after the old board has been removed).
- NEW LPV-20-12 POWER SUPPLY:** The new Power Supply is pre-connected to the new Control Unit Board and will be inserted into the existing Control Box with supplied double-sided 3M tape.
- NEW ANTENNA:** The Retrofit Kit is equipped with a high-powered antenna to help your Controller communicate with your WiFi for ultimate cloud-based control.

Installation Tools

- #2 PHILLIPS SCREWDRIVER:** Needed to remove Control Box metal plates.
- 1/8TH FLATHEAD SCREWDRIVER (OR SMALLER):** Needed to disconnect wires.

REMOVING THE OLD CONTROL BOARD



Disconnect Power

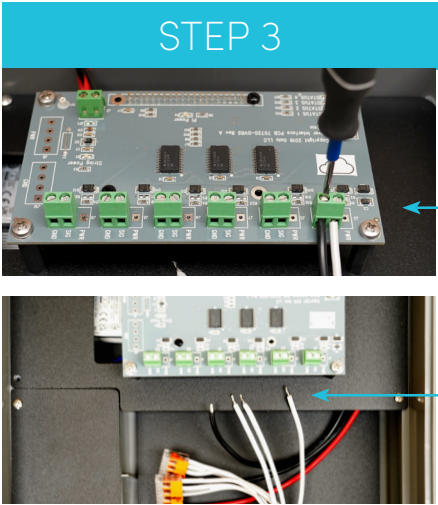
**STEP 1: Disconnect power** to the current Control Box and any Booster Boxes connected to the unit.

**⚡ WARNING**  
Do NOT plug in the system until ALL wiring is complete. Wiring while the system is live will void warranty.



Label Your PCB Wires

**OPTIONAL STEP: Label the wires** connected to the Printed Control Board (PCB). (Note: Each wire is already labeled with a small imprinted descriptor; however, this step may help you more easily re-wire your new Control Board.)



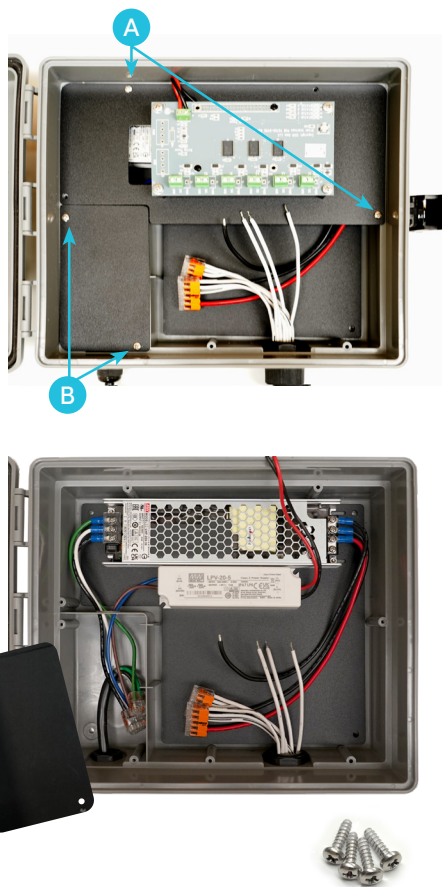
Disconnect PCB Wires

**STEP 3:** Use a 1/8th Flathead Screwdriver to **disconnect the Wires** connected from the PCB.



# INSTALLING THE NEW CONTROL BOARD

## STEP 4

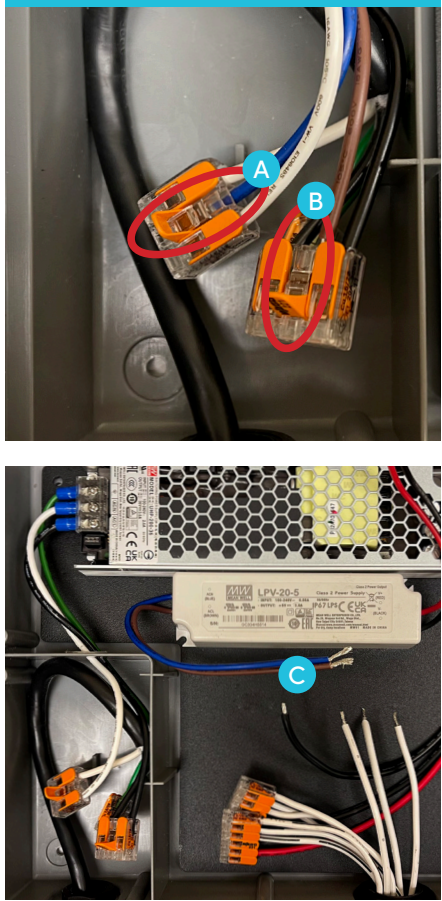


### Remove the Plates

**STEP 4:** Using a Phillips Screwdriver, **remove the metal plates.**

- A. Remove the (2) screws holding the Control Plate.
- B. Remove the (2) screws holding the Outlet Plate. (This provide access to the Power Cord wires, which are used to wire the new Power Supply in Step 5 and 8.)
- C. Keep screws for later use.

## STEP 5

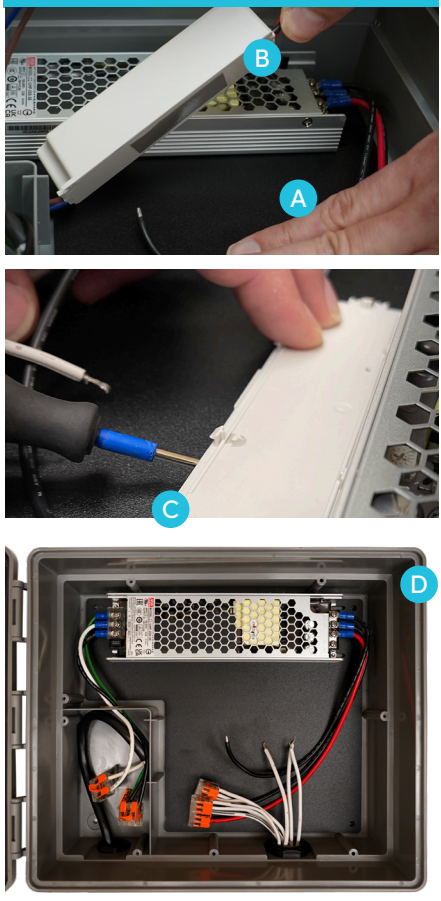


### Detach Power Supply Wires

**STEP 5:** Disconnect the **Blue** and **Brown** wires from the LPV-20-5.

- A. Flip up the Wago of the **Blue** Wire and remove the wire.
- B. Flip up the Wago of the **Brown** Wire and remove the wire.
- C. Pull the **Blue** and **Brown** wires out of the Outlet Relief; leave floating freely until Step 7.

## STEP 6

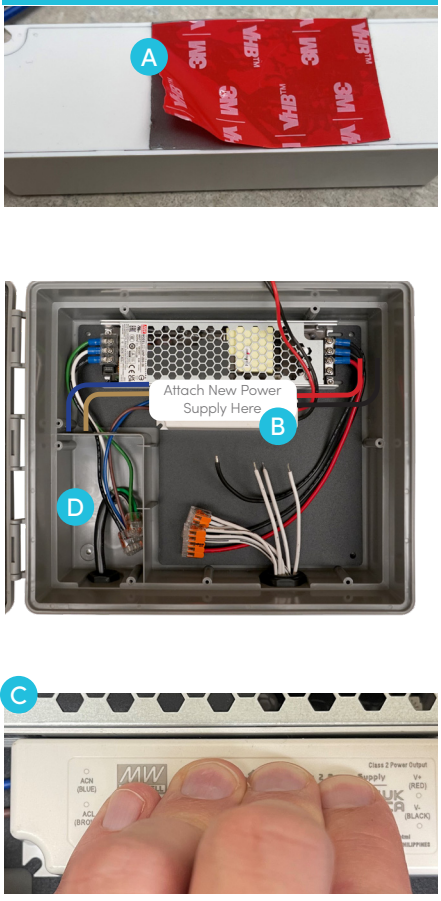


### Remove the Power Supply

**STEP 6:** Remove the current LPV-20-5 Power Supply.

- A. Place your hand on the Control Box metal board, firmly holding it down.
- B. Grab the Red and Black wires at the base of power supply and steadily pull the power supply off of the plate.
- C. If the back of the power supply stays attached to the plate, use a Phillips Screwdriver to wedge the tip underneath the backing and pry the backing off.
- D. Your controller will look like this after Step 6.

## STEP 7

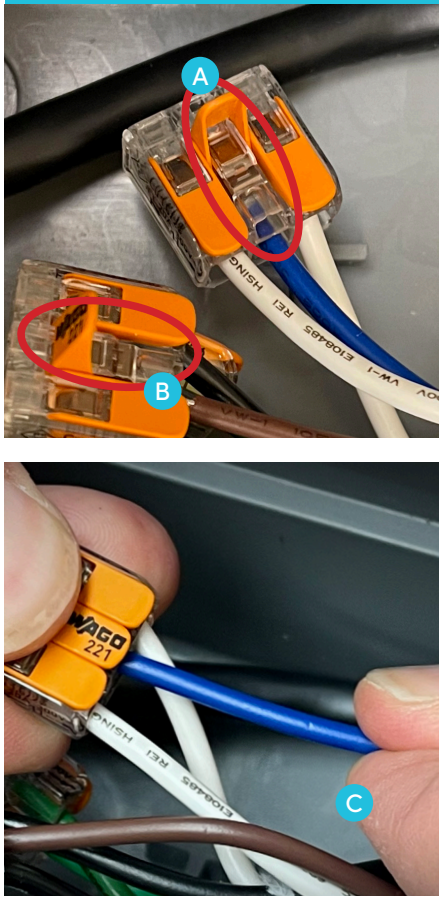


### Install New Power Supply

**STEP 7:** Install the new LPV-20-12 Power Supply.

- A. Remove the red backing from the double-sided tape on the new LPV-20-12 Power Supply.
- B. Place the LPV-20-12 on the Power Supply Plate with the Blue and Brown wires facing toward the Power Outlet.
- C. Firmly apply pressure to the Power Supply for 10 seconds.
- D. Feed the **Blue** and **Brown** wires into the Outlet Relief.

## STEP 8

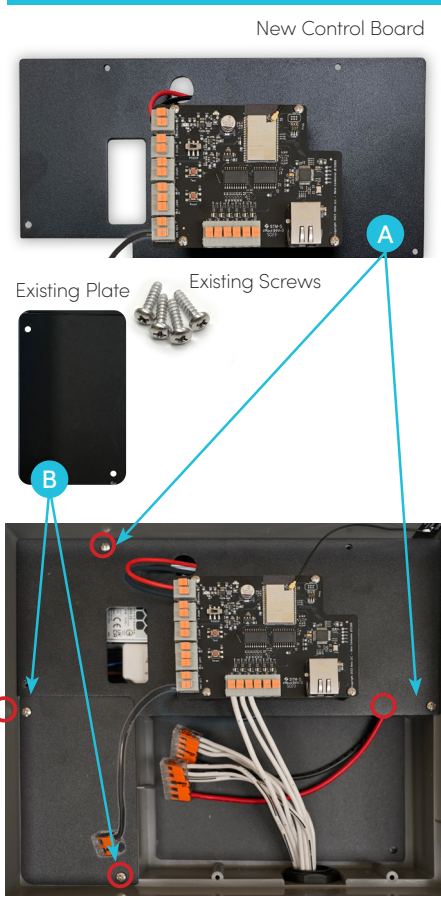


### Wire the New Power Supply

**STEP 8:** Insert the LPV-20-12's **Blue** and **Brown** wires into the designated Wagos below.

- A. Insert the **Blue** Wire into the Wago with the **White** Wires; flip closed.
- B. Insert the **Brown** Wire into the Wago with the **Black** Wires; flip closed.
- C. Test the connection by gently pulling on the wires.

## STEP 9



### Attach the Above Plates

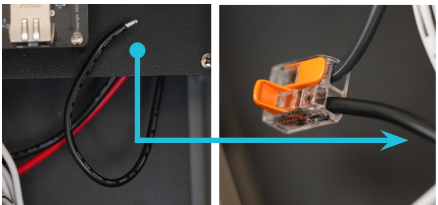
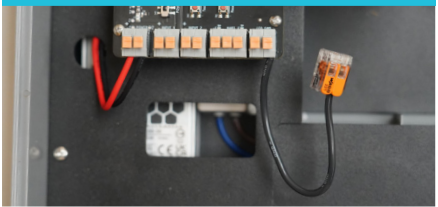
**STEP 9:** Attach the plates (as described below) using a Phillips Screwdriver:

- A. Use 2 of the saved screws to secure the new Control Plate.
- B. Use 2 of the saved screws to secure the existing Outlet Plate.

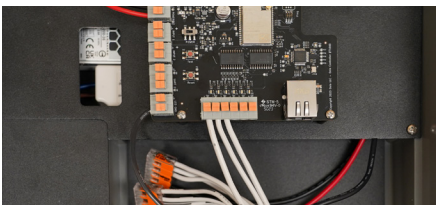
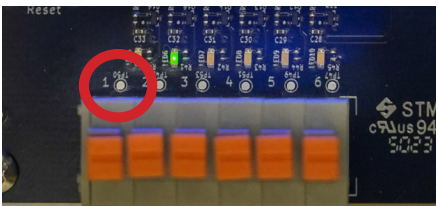


# INSTALLING THE NEW CONTROL BOARD CONTINUED

## STEP 10



## STEP 11



### Insert the Ground Wire

**STEP 10:** Insert the Ground Wire from the Power Supply into the Wago attached to the Control Board GND port.

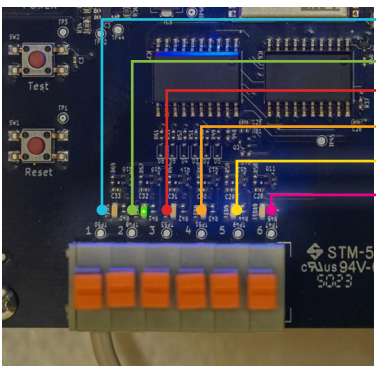
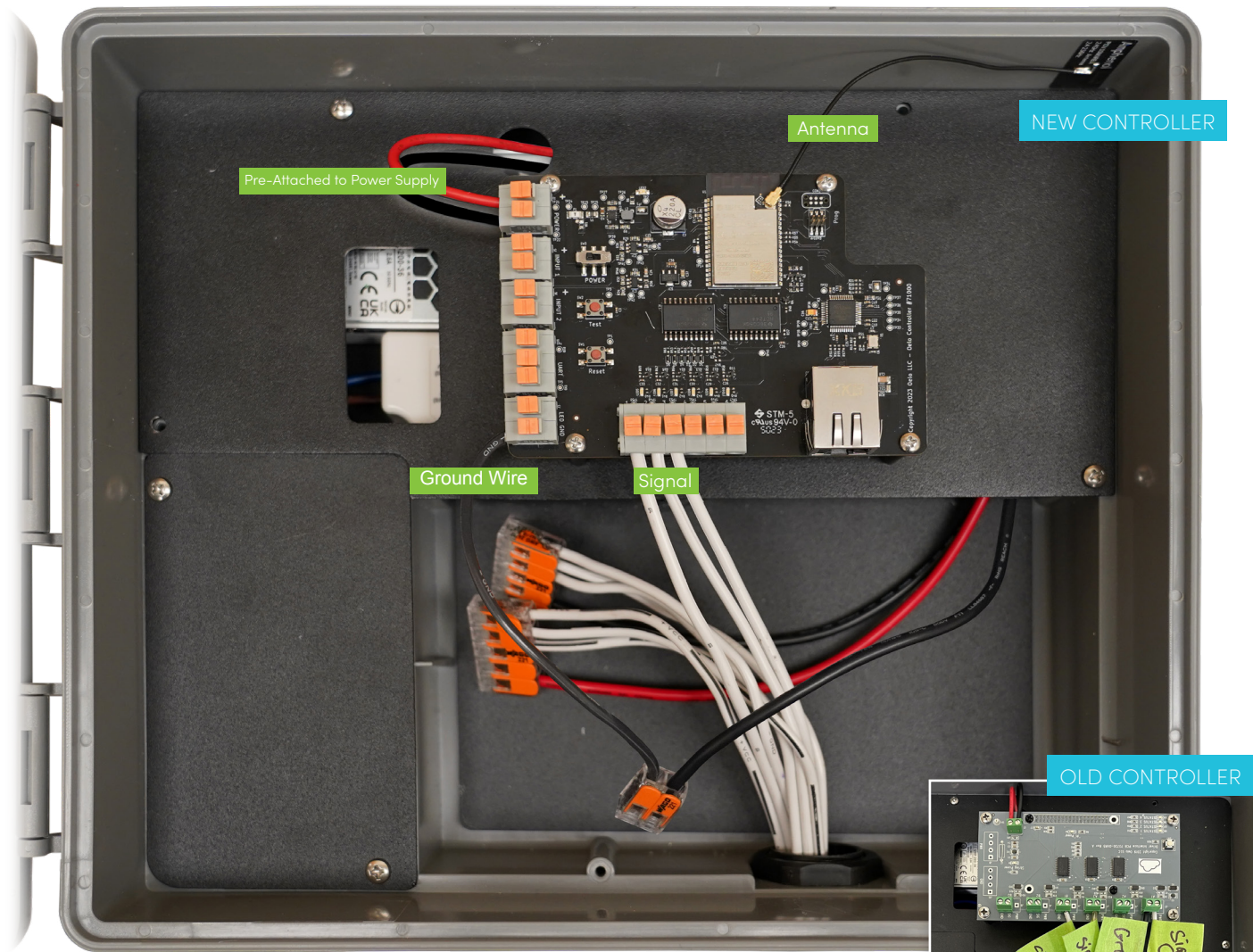
- A. Open the empty slot on the Wago Connector.
- B. Insert the GND Wire into the slot.
- C. Snap the Wago closed.
- D. Gently tug on the wire to confirm a secure connection.

### Insert the S Signal Wire(s)

**STEP 11:** Insert the Signal Wire(s) into the into the ports labeled 1-6 on the Control Board.

- A. Strip the S Wire(s) to the length of the port, approximately 1/2". If it is too short, the wire will not stay connected.
- B. Press and hold the button on the S Port #1.
- C. Insert the S Wire into the S Port #1. Do not have exposed wire showing.
- D. Release the button on the S Port #1.
- E. Gently tug on the wire to confirm a secure connection.
- F. If you have more than one Signal Wire (or want to add additional lights / zones) use the next numerical S Port.

## FINAL WIRING RESULTS



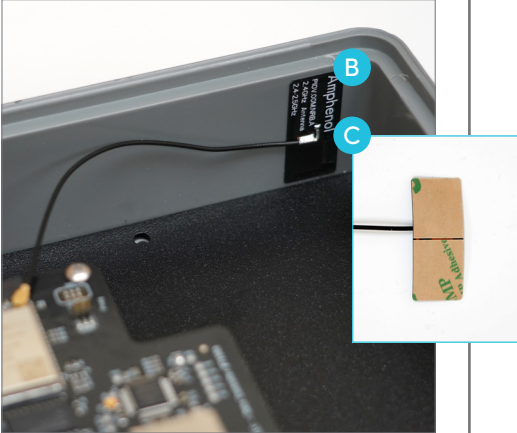
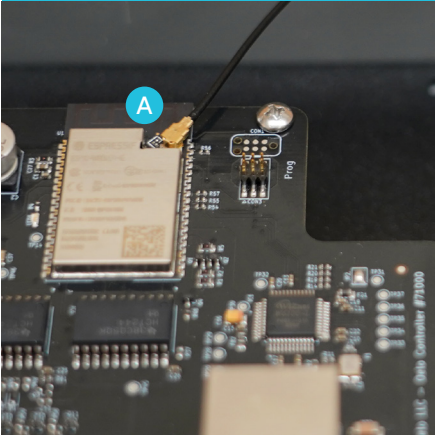
- Zone 1 Signal Output
- Zone 2 Signal Output
- Zone 3 Signal Output
- Zone 4 Signal Output
- Zone 5 Signal Output
- Zone 6 Signal Output

Zone Outputs



# THE FINAL TOUCHES

## STEP 12



### Attach Antenna

STEP 12: Attach the Antenna to the Control Box.

- A. First, make sure the Antenna connection is secure by pressing on the antenna, where it connects to the Controller.
- B. Clean the inside corner of the box with alcohol to secure the Antenna Receiver.
- C. Remove the Antenna Receiver's tape backing, then press and hold onto the box for 5 seconds.

## STEP 13



### Fasten New Sticker to Door

STEP 13: Fasten the supplied sticker to the inside door panel over the old label for updated instructions.

## STEP 14



### Apply the Finals Touches

STEP 14: The final steps!

- A. Remove your optional wire labels.
- B. Plug in the Control Box and Booster Boxes into power.
- C. Congrats! Your retrofit is complete ...
- D. Now, it's time to set up your new controller and Oelo Evolution App:  
[oelo.com/resources/manuals](https://oelo.com/resources/manuals)

Tag us in your photos and videos please!



@oelolightingsolutions



@oelolighting



@oelolighting



@oelo

If you have issues with your retrofit install, please contact our troubleshooting desk.

970-212-3676





[oelo.com](https://oelo.com) | 3842 Redman Dr., Fort Collins, CO | 970.212.3670

See an Oelo representative or authorized installer for further details. All information in this brochure is the latest available at the time of publication. Printed in the USA. 0324 ©2024 Oelo