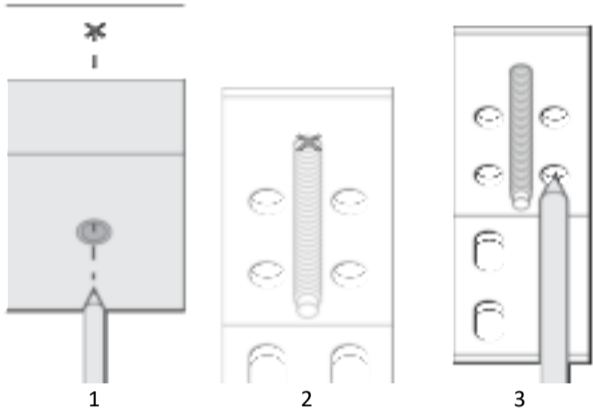
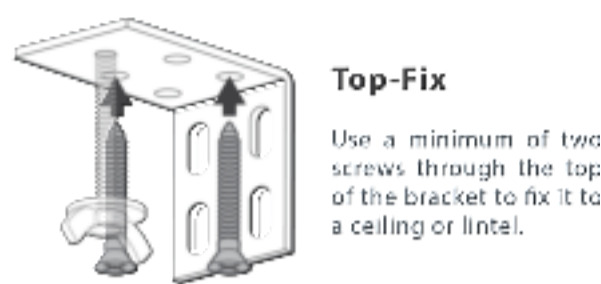


### 1 INSTALLING THE BRACKETS

Start by marking out the locations for your brackets.

The blind will have pre-drilled holes through the headrail, you can use these as a guide to begin with. Marking out the bracket locations is slightly different depending on your fitting method. The brackets offer two methods of fitting:

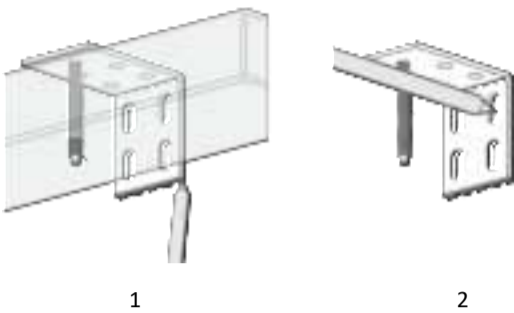
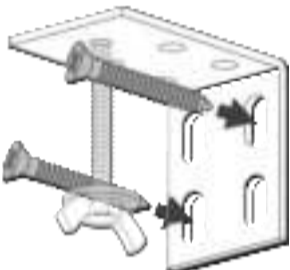


Hold the blind up where you want it fitted and use a pencil to mark out where the bracket holes will be.

Line up your bracket so that the the mark you made lines up with the screw section, and Use your pencil to mark out the screw holes you'll be using.

#### Face-Fix

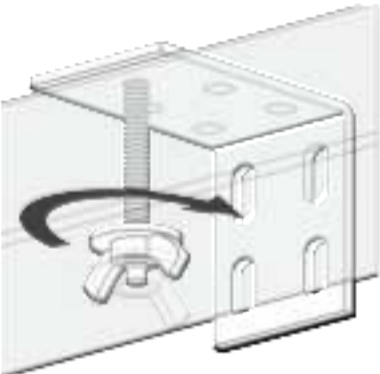
Use a minimum of two screws through the back of the bracket to fix it to a facing surface, such as a wall



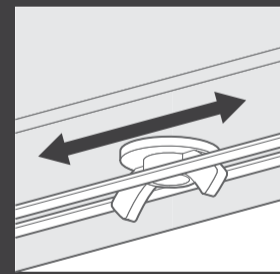
Slot the brackets into the headrail, then hold the blind up where you want to fit it and draw a line across the bottom of the bracket.

Remove the rail, realign the bracket with the line you made, and mark out the screw holes you'll be using.

### 2 INSTALLING THE BLIND

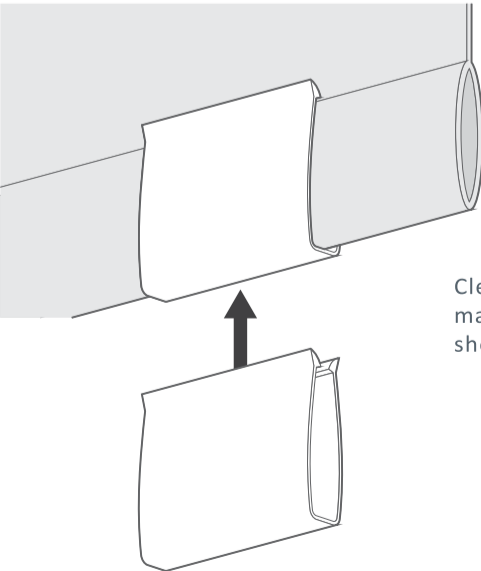


Slot the rail onto the brackets and fix in place using the wingnuts provided.



#### IMPORTANT

The cords running along the underside of the headrail must be allowed to move freely. To avoid them tangling with the wingnut, ensure that the 'wings' are facing side-on, aligned with the headrail.



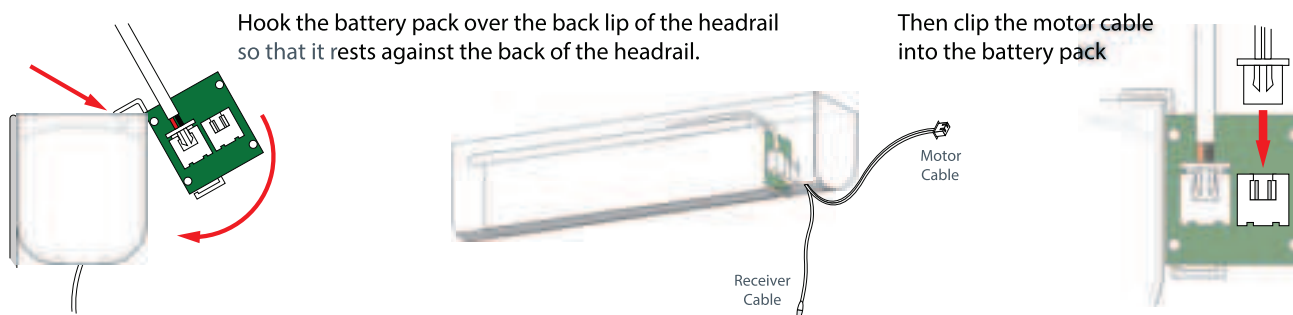
Clear plastic tab-handles are provided to protect the fabric from gathering finger marks. Simply slot the handle onto the bottom-bar of the blind; ideally, there should be one fitted close to each end of the blind.

or window frame.

# PREMIER ROMAN SHADE INSTALLATION GUIDE

## Connect Battery Pack

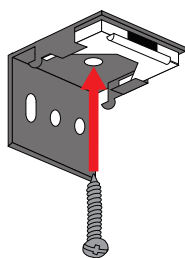
1



**Top Tip:** Make sure that the receiver cable is hanging down from the headrail and that it is not touching anything metal.

## Install Brackets

2



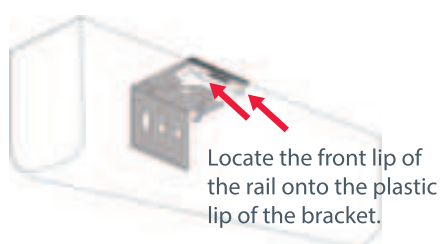
### Top-Fix

Use this method to mount the blind to the surface directly above the blind (commonly the ceiling or the lintel of the recess), only one screw per bracket is required for top-fixing

**Top Tip:** Be sure to position the brackets at such a distance from the ends of the blind that they don't interfere with the battery pack

## Fit Blind

3



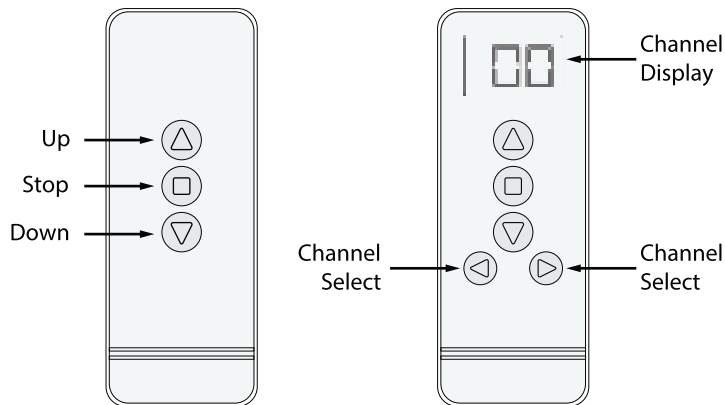
To attach the blind to the brackets, hold the rail at a slight angle and locate the front lip of the rail onto the plastic lip of the bracket. Then gently push the towards the back of the bracket while straightening the angle of the rail to lock the rail into place.

To remove the rail, simply push the rail towards the back of the bracket and twist the rail downwards at the back, it will disengage the hooks at the back of the bracket and allow the blind to be taken down.

**Please charge the battery when the motor alarm or work is faltering.**

**Charging time:** Charge for 4 hours or the indicator change to green after 1 hour, please take the charger away when charging fully.

Single Channel Remote (Front)    Multi-Channel Remote (Front)



The remote control will be pre-programmed during manufacture to work with your blind, so there's no need to perform the initial programming (the programming of automatic stop points is optional).

In the case of multiple blinds with multi-channel remotes, each blind will be pre-programmed to a particular channel on the remote, and a label showing the channel number assigned will be attached to the back of the headrail on each blind.



By default, pressing the 'Up' button will raise the blind. Press once, and the blind will continually raise until you press the 'Stop' button.



Stops the blind when in motion. If an intermediate stop point has been set, pressing this button while the blind is not in motion will raise or lower the blind to its intermediate stop point, where it will then stop automatically.



By default, pressing the 'Down' button will lower the blind. Press once, and the blind will continually lower until you press the 'Stop' button.

### Multi-channel Remote



'Left' and 'Right' buttons are used to toggle which channel (and therefore which blind) the remote is controlling. If channel '0' is selected, then all of the blinds will move simultaneously when the remote is used.

## Replace Battery

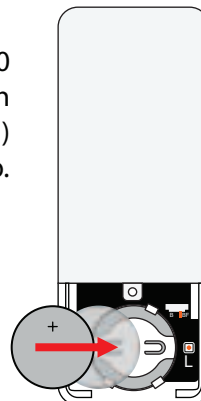
### Step 1:

Use a screwdriver to loosen the screw then push the battery cover and simultaneously slide and take off the battery cover.



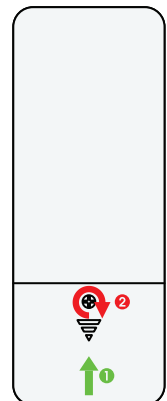
### Step 2:

Install CR2450 Battery with positive (+) side facing up.



### Step 3:

Slide up and fasten the screw to lock battery door.



### Note:

- Remove and immediately recycle or dispose of used batteries according to local regulations, and keep it away from children. Do NOT dispose of batteries in household trash or incinerate it.
- Even used batteries may cause severe injury or death.
- Call a local poison control center for treatment information.
- Battery type: Cr2450
- Nominal battery voltage: 3V
- Non-rechargeable batteries are not to be recharged.
- Temperature rating: 45°C
- Do not force discharge, recharge, disassemble, heat above (manufacturer's specified temperature rating) or incinerate. Doing so may result in injury due to venting, leakage or explosion resulting in chemical burns.
- Ensure the batteries are installed correctly according to polarity (+ and -).
- Do not mix old and new batteries, different brands or types of batteries, such as alkaline, carbonzinc, or rechargeable batteries.

- Remove and immediately recycle or dispose of batteries from equipment not used for an extended period of time according to local regulations.
- Always completely secure the battery compartment. If the battery compartment does not close securely, stop using the product, remove the batteries, and keep them away from children.

## **⚠ WARNING**

- **INGESTION HAZARD:** This product contains a button cell or coin battery.
- **DEATH** or serious injury can occur if ingested.
- A swallowed button cell or coin battery can cause **Internal Chemical Burns** in as little as **2 hours**.
- **KEEP** new and used batteries **OUT OF REACH of CHILDREN**
- **Seek immediate medical attention** if a battery is suspected to be swallowed or inserted inside any part of the body.



## WARRANTY INFORMATION

### ONE YEAR LIMITED WARRANTY:

#### What is covered by this warranty and for how long?

All products are warranted against defects in materials and workmanship for a period of one year from the date of purchase, provided that the product is installed according to the product instructions. We reserve the right to determine if your piece warrants repair or partial replacement of any parts. In the unlikely event that the entire piece is defective, we will replace this window covering with a new window covering of equal or superior value; this shall be your sole remedy under this warranty.

#### Who and what is covered by this warranty?

The original customer in a residential application within the United States is covered under this warranty; proof of purchase is required. Removal, installation or re-installation of any window covering is not covered under this warranty. This warranty does not cover damage or defects caused by or resulting from improper maintenance, neglect or improper use, abuse, misuse, neglect, accidents, acts of god, alteration, commercial use, installation, removal or re-installation or exposure to excessive moisture.

#### Your rights under State Law?

This warranty gives you specific legal rights. You may also have other rights, which may vary from state to state. We will not be liable for **INCIDENTAL OR CONSEQUENTIAL DAMAGES** or for any other direct or indirect damage, loss, cost, expense or fee. Some states do not allow the exclusion or limitation of incidental or consequential damages, so the above limitation or exclusion may not apply to you.

### THIS WARRANTY IS EXCLUSIVE AND IN LIEU OF ALL OTHER OBLIGATIONS, LIABILITIES OR WARRANTIES

## SAFETY NOTE



# WARNING



Young children can strangle in cord and bead chain loops. They can also wrap cords around their necks and strangle.

- Always keep cords and bead chains out of children's reach.
- Move cribs, playpens and other furniture away from cords and bead chains as children can climb furniture to get to cords.
- Do not remove the safety shield from cords and bead chains. This device can prevent children from pulling cords and bead chains around their necks.

# Roman Shades

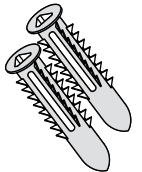
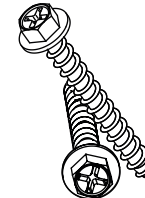
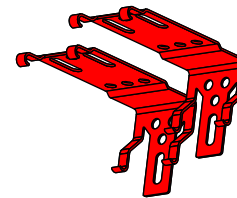
## Installation Instruction

### SHADES WITH CLUTCH AND CONTINUOUS CHAIN LOOP

*Thank you for purchasing your custom flat sheer shades. With proper installation your shade should look beautiful and provide years of service. Please check all parts and read these instructions before starting installation.*

## TOOLS & ADDITIONAL ITEMS REQUIRED

#### • MOUNTING HARDWARE KIT INCLUDES:



Product Width  $\leq 40.9"$

Brackets x2

Screws x4

Wall Anchors x4

$40.9" < \text{Product Width} \leq 59.1"$

Brackets x3

Screws x6

Wall Anchors x6

$59.1" < \text{Product Width} \leq 70.9"$

Brackets x4

Screws x8

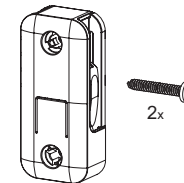
Wall Anchors x8

$70.9" < \text{Product Width}$

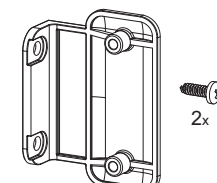
Brackets x5

Screws x10

Wall Anchors x10



Tensioner with Screws  
Set x1



Tensioner Bracket with Screws  
Set x1 (Outside Mount only)

#### • TOOLS REQUIRED

1. Pencil
2. Tape Measure
3. Screwdriver - Phillips Head
4. Power Drill with Drill Bit
5. Level
6. Ladder

# INSTALLING YOUR SHADE

## STEP 1: INSTALLING THE BRACKET

Your shade can be installed either top mounting (**Figure 1**) or face mounting (**Figure 2**) using the provided brackets.

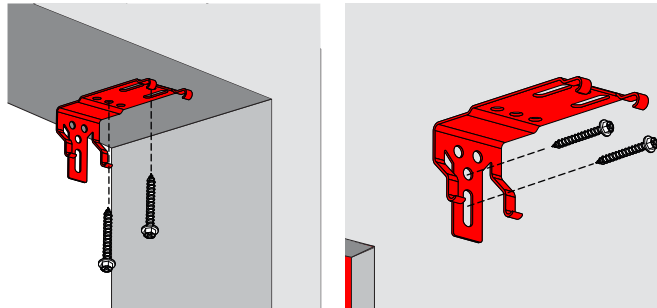


Figure 1 - Top Mounting

Figure 2 - Face Mounting

You will need to leave 2-4 inches of space from the end of the headrail to properly mount the brackets. If more than two brackets are required, the bracket must be evenly spaced.

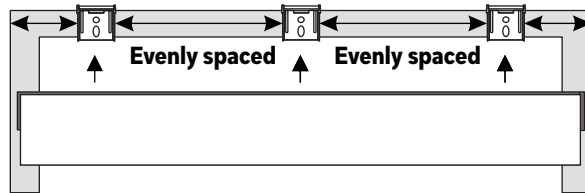


Figure 3 - Bracket Location

## STEP 2: INSTALLING THE SHADE

Lift the headrail into position so that the back hooks of each mounting bracket is under the back panel of the headrail.

Push the headrail forward the window until the front hook snaps onto the front edge of the headrail. (**Figure 4**).

Check to assure that each mounting bracket is properly secured to the headrail. That is correct if you see the front hooks of the brackets stay firmly into the front edge of the headrail.

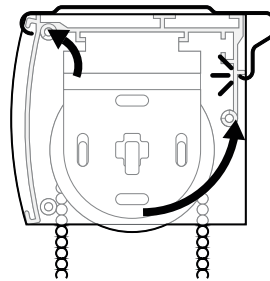
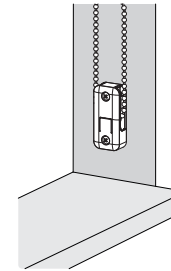


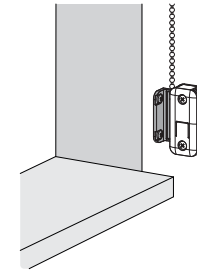
Figure 4 - Attach the Shade

**WARNING:** Please don't let the front edge of the headrail locked into the front hook of the brackets first, as this will make it impossible to install.

## STEP 3: INSTALLING THE CHILD SAFETY DEVICE - TENSIONER

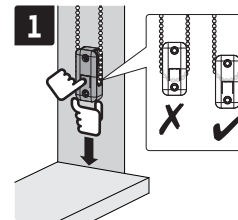


Inside Mounting

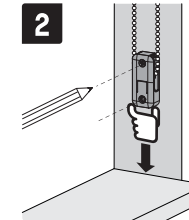


Outside Mounting

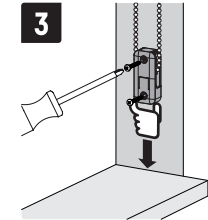
### • FOR INSIDE MOUNTING



Push the release button while pull the tensioner down until the chain is fully tensioned (plunger will be fully raised).

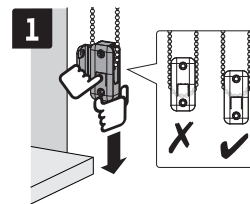


Mark screw hole locations.

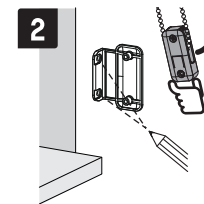


Screw device into wall

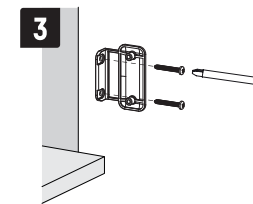
### • FOR OUTSIDE MOUNTING



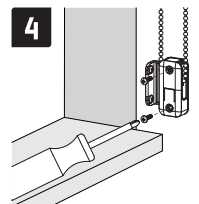
Push the release button while pull the tensioner (temporarily attached with the tensioner bracket) down until the chain is fully tensioned (plunger will be fully raised).



Put the tensioner aside and mark screw hole locations through the tensioner bracket.



Screw the tensioner bracket into wall with large screws.



Install tensioner into bracket with small screws.

**WARNING:** It is imperative that the tensioner be properly secured to the wall or window frame to reduce children's access to the cord or bead chain loop. Young children can strangle in cord or bead chain loops. They can also wrap cords and bead chains around their necks and strangle.