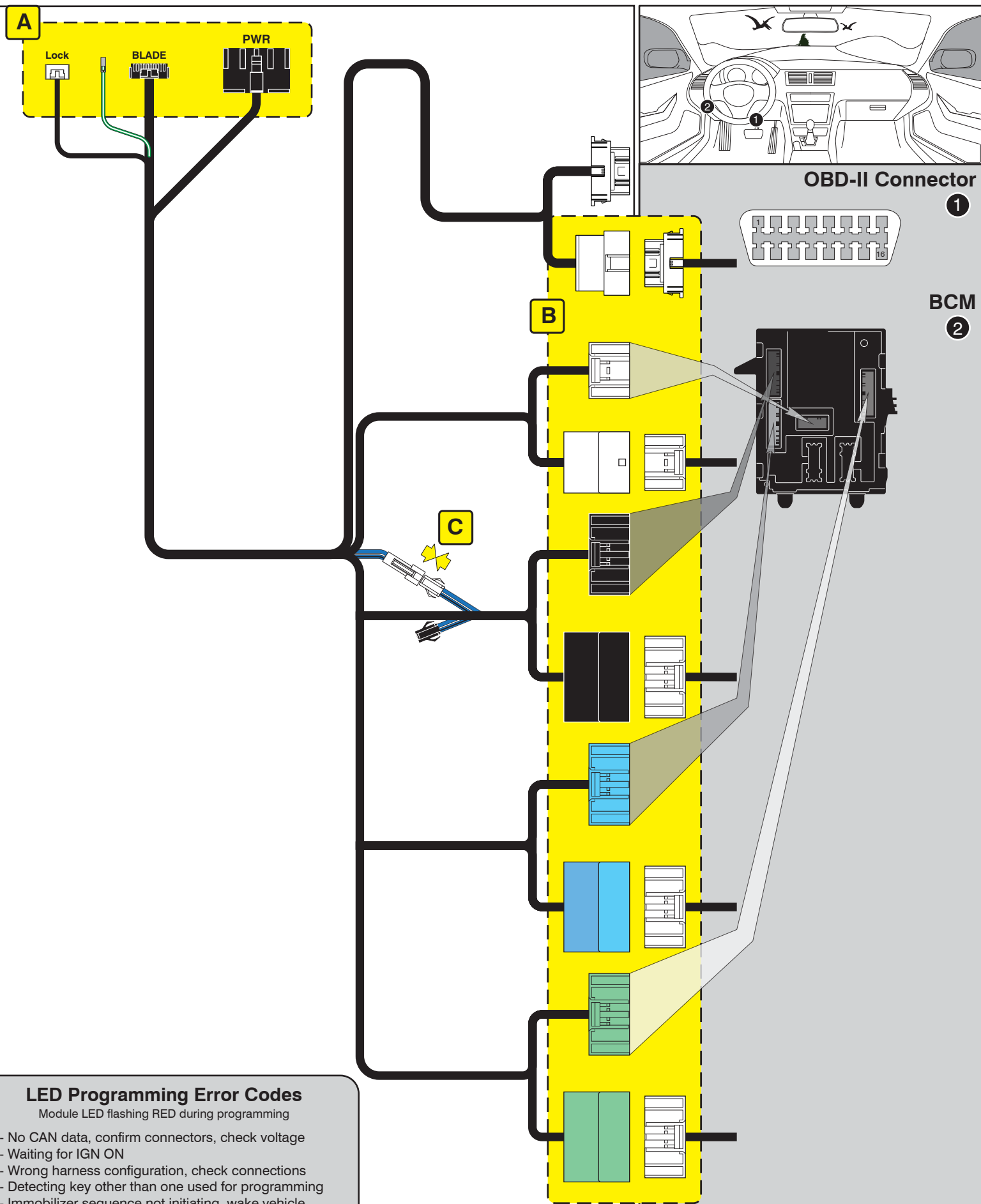


FIRSTECH, LLC.
SUPPORT - 1(888) 820-3690, EXT. 203

CM Unlock Configuration: Proper unlock control requires configuring the controller disarm output to double-pulse unlock. Set feature option 1-4 to setting 2 (Double Pulse).

FEATURE COVERAGE	
IMMOBILIZER DATA	○
DOOR LOCK	○
DOOR UNLOCK	○
ARM OEM ALARM	○
DISARM OEM ALARM	○
DOOR STATUS	○
TRUNK STATUS	○
BRAKE STATUS	○
E-BRAKE STATUS	○
HORN OUTPUT	○
SECURE TAKEOVER	○
HAZARD LIGHTS	○

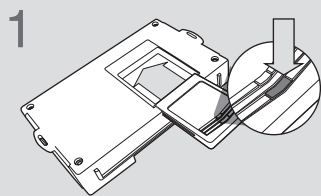


LED Programming Error Codes

Module LED flashing RED during programming

- 1x - No CAN data, confirm connectors, check voltage
- 2x - Waiting for IGN ON
- 3x - Wrong harness configuration, check connections
- 4x - Detecting key other than one used for programming
- 5x - Immobilizer sequence not initiating, wake vehicle
- 6x - Immobilizer sequence not initiating, reset module, wake vehicle and retry programming, if issue persists, restart
- 7x - Klon data does not match, reset and restart procedure

CARTRIDGE INSTALLATION



Slide cartridge into unit. Notice button under LED.

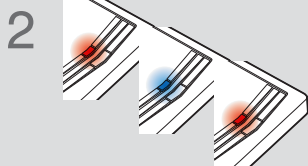
2

Ready for Module Programming Procedure.

MODULE PROGRAMMING PROCEDURE

1 OFF ACC **ON** START

Set ignition to ON position.



Wait, LED will turn solid RED, then solid BLUE for 1 second, then solid RED.

3 OFF ACC **ON** START

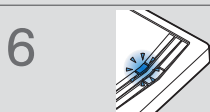
Set ignition to OFF position.



Wait, LED will turn OFF.

5 OFF ACC **ON** START

Set ignition to ON position.



If LED flashes BLUE rapidly, proceed with step 7. If LED turns solid BLUE for 2 seconds, proceed with step 13.

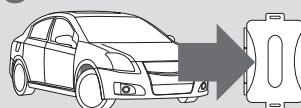
7 OFF ACC **ON** START

Set ignition to OFF position.



8

WARNING:
Disconnect power last.
Disconnect module from vehicle.



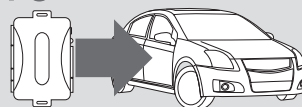
9

Connect module to computer and proceed with extended programming.



10

WARNING:
Connect power first.
Connect module to vehicle.



11 OFF ACC **ON** START

Set ignition to ON position.



12

Wait, LED will turn solid BLUE for 2 seconds.



13 OFF ACC **ON** START

Set ignition to OFF position.



14

Module Programming Procedure completed.

WARNING: READ BEFORE REMOTE STARTING THE VEHICLE


IMPORTANT

I All vehicle doors must be closed and locked prior to remote start sequence. Failure to comply will result in remote starter malfunction.

TAKE OVER PROCEDURE - PUSH TO START - TO THE VEHICLE OWNER


NOTE

I All vehicle doors must be closed and locked prior to remote start sequence.



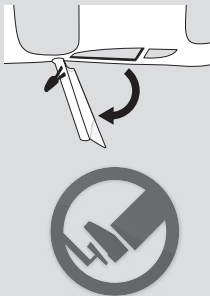
TIME RESTRICTION COMING UP !

1



Unlock vehicle door using OEM or after-market remote, or door request switch.

2



TIME RESTRICTION


Within 45 SECONDS from previous step:

Open vehicle door.
Enter vehicle.
Close vehicle door.

Press and release BRAKE pedal.

3

Take over procedure completed.



Failure to follow procedure will result in vehicle engine shutdown.

