



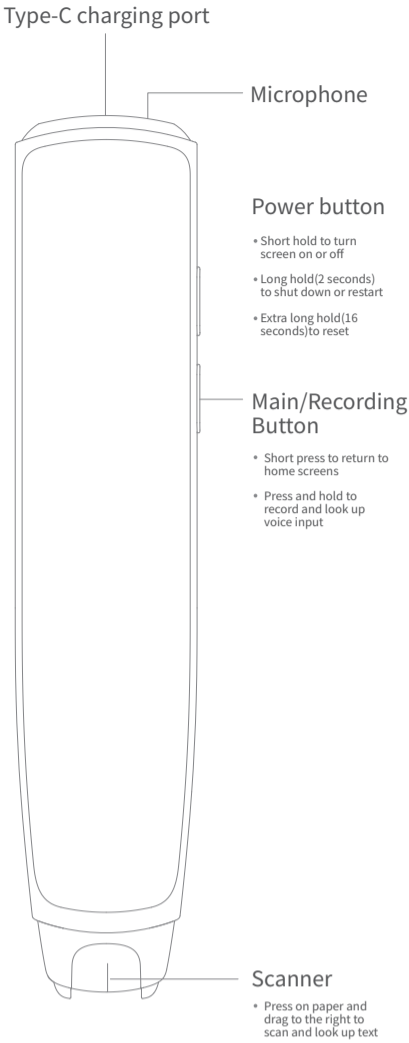
wohuimandarin.com

Instructions

F1 Dictionary Pen  
For learners of Chinese

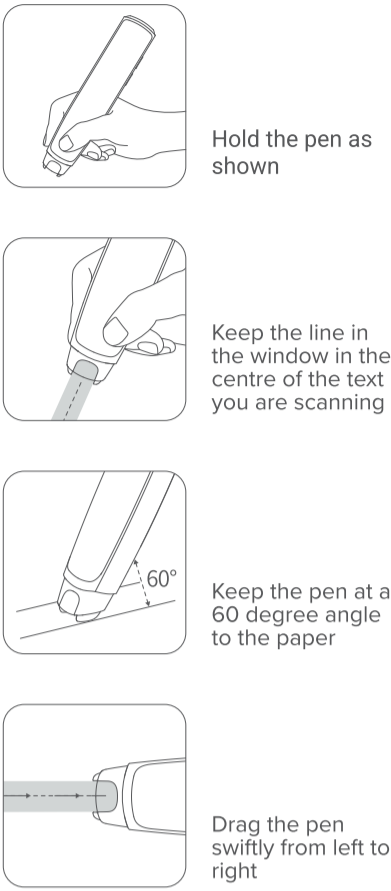
From  
ToyCloud Corporation

Introducing the F1



1

How to scan



Multi-line scanning

When enabled in Settings, multi-line scanning enables you to scan multiple lines of text provided you start to scan the next line within 1 second of lifting the pen from the previous line.

2



Wo Hui is Mandarin for “I can!”

We are a growing community of learners and teachers of Mandarin Chinese in schools and universities who are turning “I can’t” into “I can!”

We provide courses, resources and tools that put learning into the hands of the student and empower teachers to support them on their personal learning journey.

To find out more or to get in touch, please visit our website:

wohuimandarin.com



Navigate the world  
with confidence

Main Menus

1. Scan

Drag the tip of the pen over text to look it up in the dictionaries, hear it read out, check your own pronunciation and more.

You can scan individual letters or syllables in Pinyin; single characters, words, sentences, proverbs or titles of classical poems in Chinese; and words or sentences in English.

2. Texts

Listen to a line-by-line explanation in Chinese of every set text in the school curriculum in China.

3. Test

Test your ability to write and say the vocabulary in different HSK exam syllabuses (such as YCT and HSK) or your own list of favourite words.

4. Study

Memorise the vocabulary from the various lists in spoken and written format. Set yourself daily goals for the number of items you want to study and revise.

4

5. Speak

Press and hold the main button and speak Chinese or English words or sentences into the microphone. When you release the button, your words will be transcribed and looked up in the dictionaries.

6. Vocab

Review and edit the list of items that you currently have favourited (by clicking the “star” icon when viewing a dictionary entry for them).

7. History

Review and edit the list items that you have scanned, from newest to oldest.

8. Settings

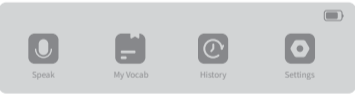
Manage settings for WiFi and Bluetooth connections, select your preferred dictionary for Chinese and English text, swap between left and right-handed use, choose a British or American accent, adjust voice speed, volume and brightness, and turn multi-line scanning on or off.

5

Connect to Wifi

To get the full use of the audio functions, you’ll need an internet connection.

1. Turn the pen on, scroll right to the “Settings” menu and open it.



2. Open “Wifi” settings, switch on Bluetooth and select the Wifi network you want to connect to.



Automatic voicing

By default, text will automatically be voiced after you have scanned it. If you wish to disable this function, go to the “Settings” menu, select “Voice” and switch the “Automatic Voicing” toggle to off.



6

Connect Bluetooth

1. Turn on the Bluetooth headphones or speaker you wish to connect to and put them into discovery mode.

2. Open “Settings,” click on “Bluetooth connection” and switch on Bluetooth to start searching for nearby devices.



3. Tap on the Bluetooth device you want to connect to in order to start connecting.



4. Once connected, “Connected” will be displayed below the name of the Bluetooth device.



Software updates

From time to time, the pen’s software will be updated. To install the latest version of the software, the pen must be at least 30% charged and connected to the Internet.

In “Settings” you can choose whether to have the pen check and update automatically, or to initiate checks and updates manually.

7

## **FCC Statement:**

This device complies with part 15 of the FCC Rules. Operation is subject to the following two conditions: (1) This device may not cause harmful interference, and (2) this device must accept any interference received, including interference that may cause undesired operation.

This equipment has been tested and found to comply with the limits for a Class B digital device, Pursuant to part 15 of the FCC Rules. These limits are designed to provide reasonable protection against harmful interference in a residential installation. This equipment generates, uses and can radiate radio frequency energy and, if not installed and used in accordance with the instructions, may cause harmful interference to radio communications. However, there is no guarantee that interference will not occur in a particular installation. If this equipment does cause harmful interference to radio or television reception, which can be determined by turning the equipment off and on, the user is encouraged to try to correct the interference by one or more of the following measures:

- Reorient or relocate the receiving antenna.
- Increase the separation between the equipment and receiver.
- Connect the equipment into an outlet on a circuit different from that to which the receiver is connected.
- Consult the dealer or an experienced radio/TV technician for help.

Caution: Any changes or modifications to this device not explicitly approved by manufacturer could void your authority to operate this equipment.

### **Radiation Exposure Statement**

The device has been evaluated to meet general RF exposure requirement in portable exposure condition without restriction.