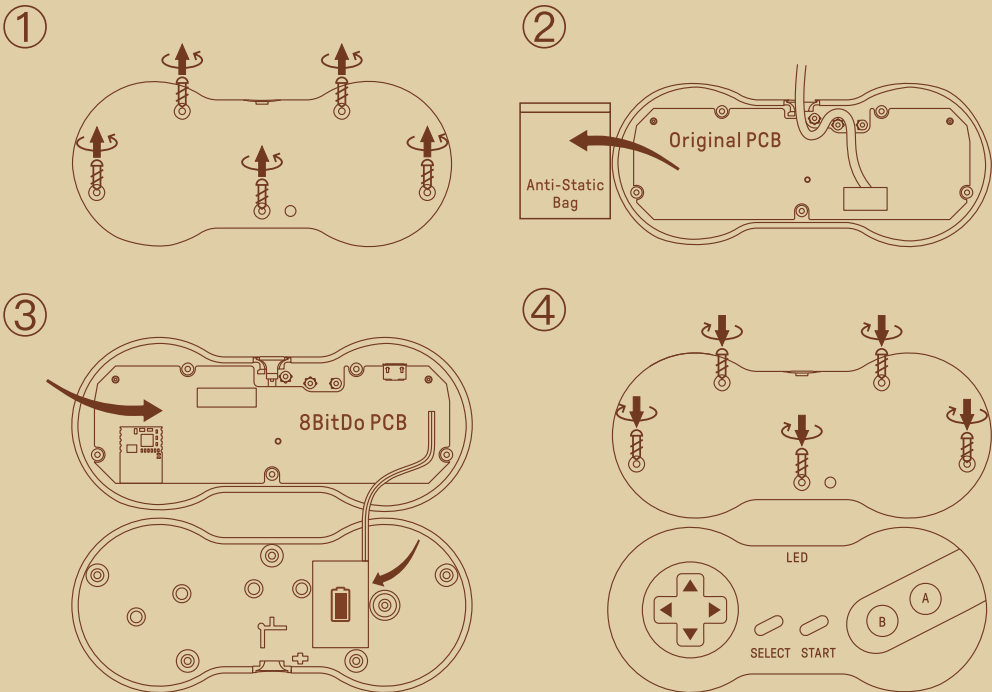


Instructions - Dogbone Mod Kit



* Please handle it with care.
We are not responsible for any damage caused in use.



Switch

- 1 – press **left + start** to turn on the controller
 - 2 – press and hold **select** for 3 seconds to enter pairing mode. LED will rapidly blink
 - 3 – go to your Switch Home Page to click on Controllers, then click on Change Grip/Order. LED becomes solid when connection is successful
 - 4 – controller will auto reconnect to your Switch with the press of **start** once it has been paired
- when connected to your Switch, **select + down** = Switch HOME button

Android (D - input)

- 1 – press **b + start** to turn on the controller
- 2 – press and hold **select** for 3 seconds to enter pairing mode. LED will rapidly blink
- 3 – go to your Android device's Bluetooth setting, pair with [8BitDo Dogbone Modkit]. LED becomes solid when connection is successful
- 4 – controller will auto reconnect to your Android device with the press of **start** once it has been paired

Windows (X - input)

- 1 – press **up + start** to turn on the controller
- 2 – press and hold **select** for 3 seconds to enter pairing mode. LED will rapidly blink
- 3 – go to your Windows device's Bluetooth setting, pair with [8BitDo Dogbone Modkit]. LED becomes solid when connection is successful
- 4 – controller will auto reconnect to your Windows device with the press of **start** once it has been paired

macOS

- 1 – press **a + start** to turn on the controller
- 2 – press and hold **select** for 3 seconds to enter pairing mode. LED will rapidly blink
- 3 – go to your macOS device's Bluetooth setting, pair with [Wireless Controller]. LED becomes solid when connection is successful
- 4 – controller will auto reconnect to your macOS device with the press of **start** once it has been paired

battery

status –  LED indicator –

low battery mode  LED blinks in red

battery charging  LED stays solid red

• rechargeable via USB cable with 1 hour charging time

support

• please visit support.8bitdo.com for further information & additional support

Switch

1. 按 **Left + START** 键开启控制器，再按住 **SELECT** 键 3 秒进入配对状态（指示灯快闪）。
 2. 打开 Switch 主机 Controllers 选项，选择 Change Grip/ Order 选项，等待连接，连接成功后控制器蓝灯常亮。
 3. 下次使用按 **START** 键可自动连接。
- * 热键： **SELECT + DOWN** 可作为 HOME 键。

Android (D - input)

1. 按 **B + START** 键开启控制器，再按住 **SELECT** 键 3 秒进入配对状态（指示灯快闪）。
2. 打开 Android 设备蓝牙选项，选择搜索到的 [8BitDo Dogbone Modkit] 进行连接，连接后控制器蓝灯常亮。
3. 下次使用按 **START** 键可自动连接。

Windows (X - input)

1. 按 **UP + START** 键开启控制器，再按住 **SELECT** 键 3 秒进入配对状态（指示灯快闪）。
2. 打开 Windows 设备蓝牙选项，选择搜索到的 [8BitDo Dogbone Modkit] 进行连接，连接成功后控制器蓝灯常亮。
3. 下次使用按 **START** 键可自动连接。

macOS

1. 按 **A + START** 键开启控制器，再按住 **SELECT** 键 3 秒进入配对状态（指示灯快闪）。
2. 打开 macOS 设备蓝牙选项，选择搜索到的 [Wireless Controller] 进行连接，连接成功后控制器蓝灯常亮。
3. 下次使用按 **START** 键可自动连接。

电源

电量状态  指示灯状态

低电量  红灯闪

充电中  红灯亮

* 充电时间约 1 小时充满。

固件升级

* 请访问 <https://support.8bitdo.cn/> 了解详细信息。