

# ELAN<sup>®</sup> INTEGRATION for TAHOMA<sup>®</sup> SWITCH



INTEGRATION GUIDE

ELAN® INTEGRATION for TAHOMA® SWITCH

VERSION 1.1 | OCTOBER 2024 | Prepared by PROJECT SERVICES

TABLE OF CONTENTS

I. INTRODUCTION ----- 3

II. OVERVIEW ----- 4

    RESOURCES & APPLICATIONS

    SYSTEM REQUIREMENTS

III. INSTALLATION ----- 5

    BUTTONS & INDICATORS

IV. SYSTEM PREPARATION ----- 7

    SOMFY SYSTEM

    ELAN SYSTEM

V. SET UP ----- 7

    DOWNLOAD DRIVER

    IMPORT TAHOMA DRIVER

    ADD INTERFACE DRIVER

    NETWORK SET UP

    DEVICE TEST

APPENDIX ----- 11

    A. ENABLE THIRD-PARTY INTEGRATION

    B. AVAILABLE COMMANDS & ACTIONS

# I. INTRODUCTION

---

The Somfy Organization's strength has been demonstrated with 50 years of experience in motorization. As leaders in the shading industry with innovative and modern solutions for homes and commercial buildings, Somfy offers the widest range of strong, quiet motors and controls for all types of applications and technologies.

## **Who is this Guide for?**

This guide is aimed at providing support and guidance to ELAN® Integrators for achieving complete automation of Zigbee® and Radio Technology Somfy® (RTS) motors with the TaHoma® switch.

## **What does this Guide contain?**

The sections of this guide contain walkthroughs and methods of controlling Zigbee and RTS devices using the TaHoma® switch(es) as the bridge between ELAN and Smart Shading by Somfy.

For questions or assistance please contact technical support:  
(800) 22-SOMFY (76639)

Get answers to your questions from our Somfy FAQ page: [www.somfysystems.com/en-us/support/faq](http://www.somfysystems.com/en-us/support/faq)  
Follow the steps to access Service & Support.

## **How should this Guide be used?**

This guide is intended to be used as a reference manual.

## II. OVERVIEW

---

The Somfy TaHoma® switch provides a single platform for Somfy Zigbee and RTS with a wide range of interior and exterior applications.

- The TaHoma system supports up to 60 Zigbee motors (max. 50 WireFree), 10 smart plugs, 15 remotes, and 40 channels of RTS
  - Join up to 10 TaHoma switch hubs for multi-zone control (RTS only)
- The TaHoma system supports a maximum of 40 scenes with schedules per install

Each TaHoma switch is connected to Wi-Fi or directly to the local area network by an optional Ethernet adaptor for IP Integration with third-party control systems. TaHoma is compatible with the Somfy Synergy™ API.

Details of this controller and commissioning instructions are available in the Somfy TaHoma pro Dealer Version Programming Guide.

### RESOURCES & APPLICATIONS

Visit [www.somfypro.com](http://www.somfypro.com) for the following guides:

- [Somfy TaHoma pro Dealer Version Programming Guide](#)
  - [Somfy RTS Pocket Programming Guide](#)

Subscribe to the Somfy YouTube Channel [www.youtube.com/somfysystems](http://www.youtube.com/somfysystems)

Visit Somfy U for all the training you need — your pace, your place [www.somfyu.com](http://www.somfyu.com)

Visit the Google Play or iOS App Store for the TaHoma by Somfy app:



[SCAN ME](#)

### SYSTEM REQUIREMENTS

PC running Windows 10 or higher

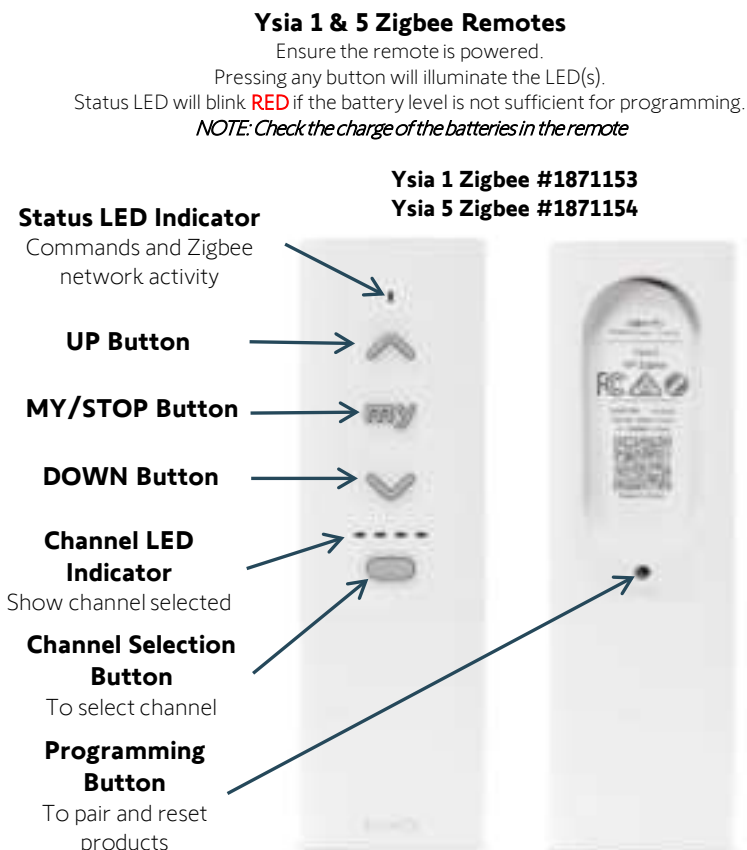
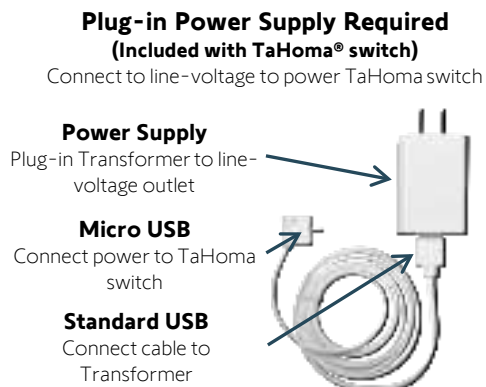
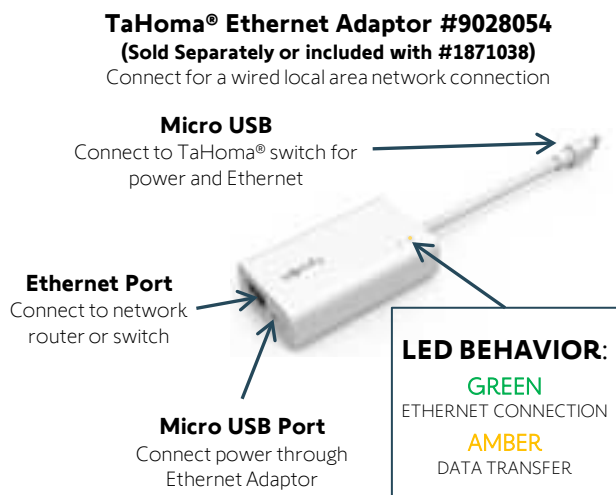
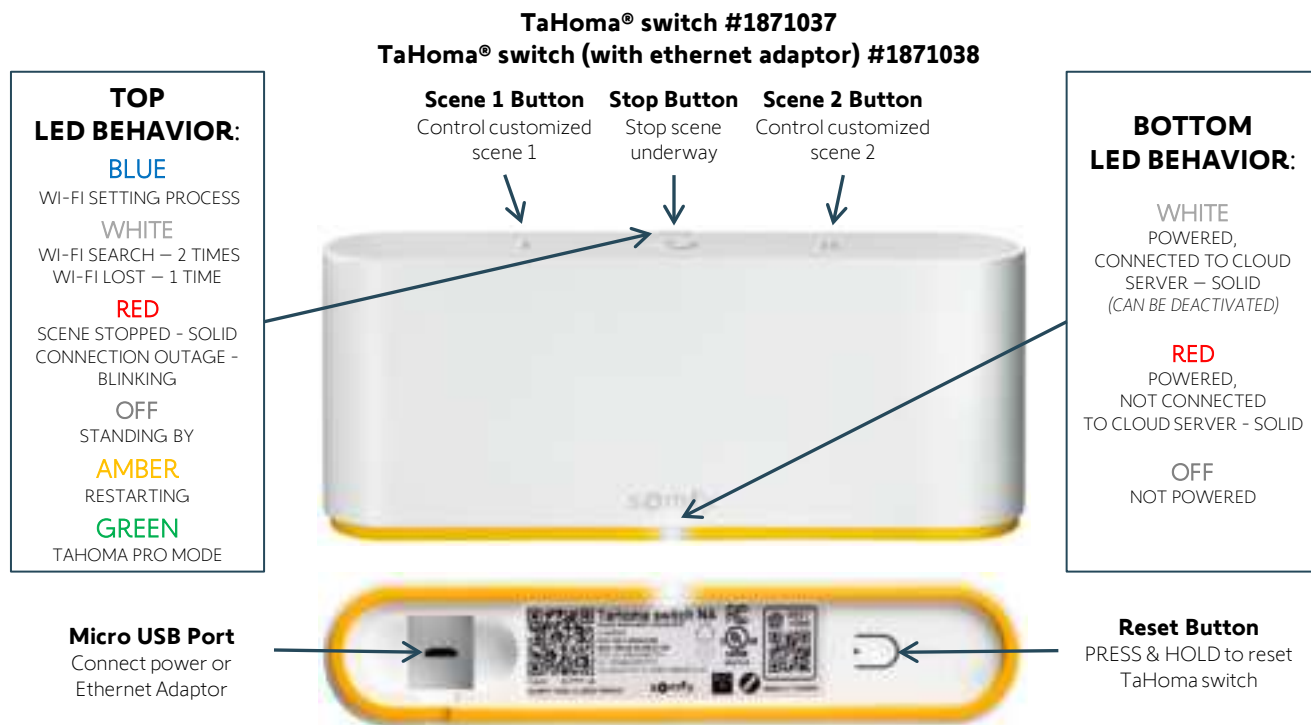
ELAN Management Cloud v1.3.0 or higher

ELAN Core Module 8.3.11 or higher



### III. INSTALLATION

#### BUTTONS & INDICATORS



## BUTTONS & INDICATORS

### WAKING THE MOTOR:

Ensure the motor has required power available.

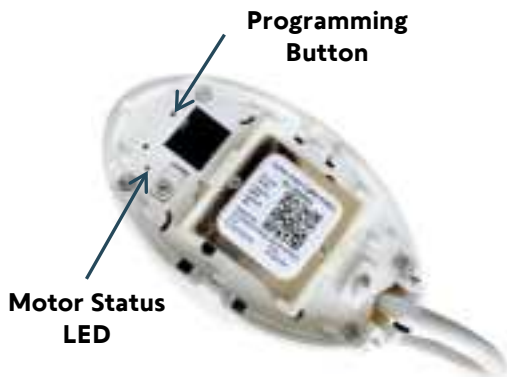
Using a small paper clip or similar, BRIEFLY PRESS the Programming Button on the head of the motor  
OR

PLUG IN the battery supply/charger.

The motor will jog (briefly move up and down), and the LED will illuminate **GREEN** for 2 seconds.

The LED will blink **AMBER** continuously during programming.

### DRAPERY MOTOR



### Smart Plug Zigbee #1871217

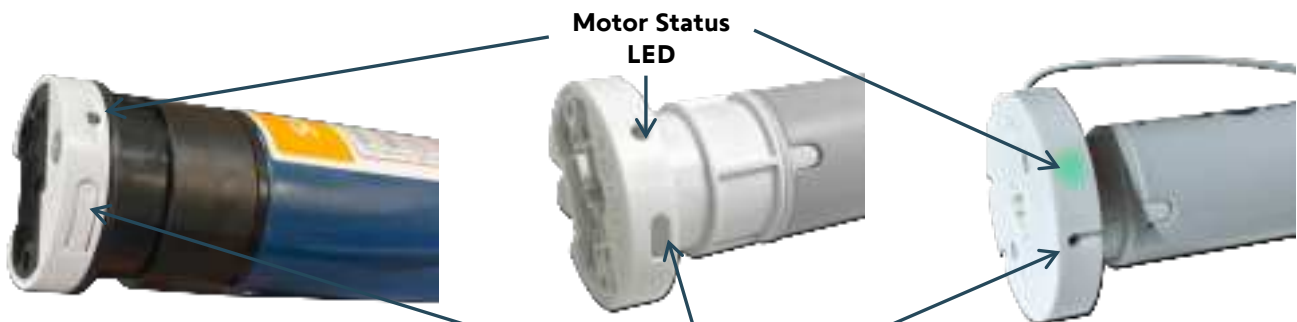
Ensure the Smart Plug is plugged into a properly powered outlet.  
QR Code and power button are on opposite sides of the plug.



### **LED BEHAVIOR:**

**RED**  
SOLID 3s – NOT CONNECTED  
POWERED – OUTPUT OFF  
**AMBER / GREEN**  
FLASHING – PAIRING MODE  
**GREEN**  
SOLID 3s – CONNECTED  
POWERED – OUTPUT ON  
**OFF**  
NOT PAIRED  
NOT POWERED

### ROLLER MOTORS



### **Motor Status LED**

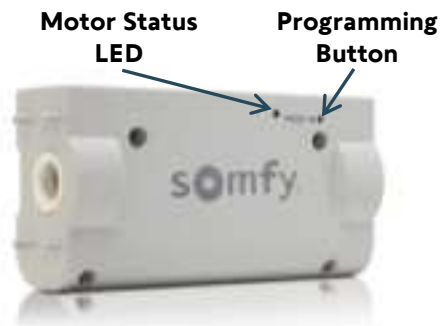
### **MOTOR STATUS LED BEHAVIOR:**

**AMBER**  
MOTOR IS NOT SET  
IN SETTING MODE  
IN ADJUSTMENT MODE

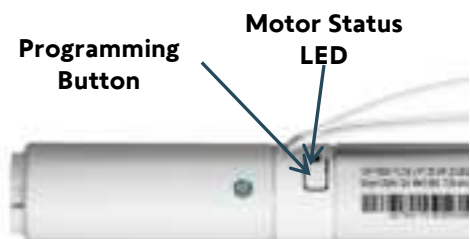
**GREEN**  
MOTOR IS CHARGING  
CONFIRMED SETTING

**RED**  
LOW BATTERY CHARGE  
THERMAL PROTECTION  
IMPOSSIBLE SETTING  
NOT ILLUMINATED ONCE  
PAIRED AND OPERATIONAL

### TILT MOTOR



### CORD LIFT MOTOR



## IV. SYSTEM PREPARATION

### SOMFY SYSTEM

A fully operational TaHoma system is required prior to ELAN programming. The TaHoma system supports up to 60 Zigbee motors (max. 50 WireFree), 10 smart plugs, 15 remotes, and 40 channels of RTS.

RTS devices programmed to an RTS channel will only receive commands from the associated TaHoma switch hub.

Hubs must be placed within 25-35' of the devices they control.

- Confirm with the Shade Commissioning Agent that the TaHoma switch firmware is up to date
- An Integration Report is generated in the TaHoma app which will include the TaHoma switch PIN and IP address
  - Ensure that a DHCP Reservation via MAC Address of the TaHoma switch is being used
  - Third-Party Integration must first be enabled in the TaHoma app ([see Appendix A](#))

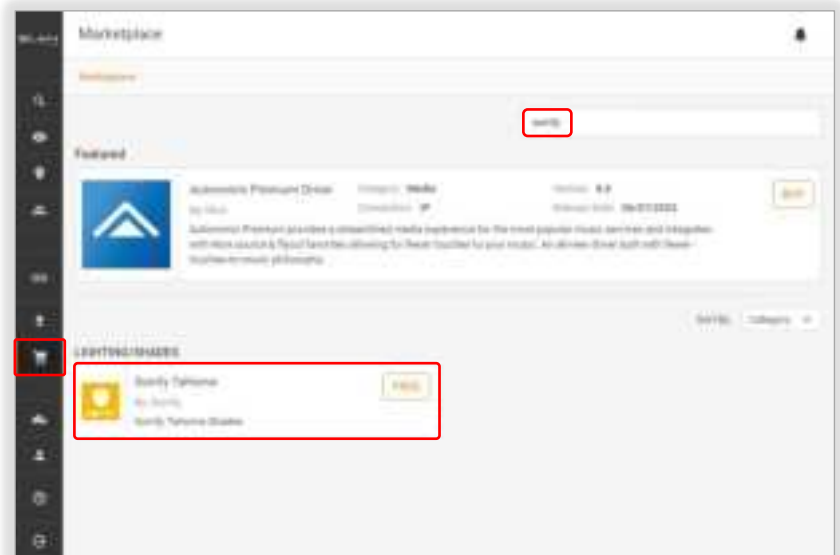
### ELAN SYSTEM

A fully operational ELAN system is required prior to TaHoma integration.

## V. SET UP

### DOWNLOAD DRIVER

- 1) OPEN the ELAN Management Cloud
- 2) SELECT "Marketplace"  
*Marketplace is the Shopping Cart icon.*
- 3) ENTER "somfy" in the Search field
- 4) SELECT "Somfy TaHoma"



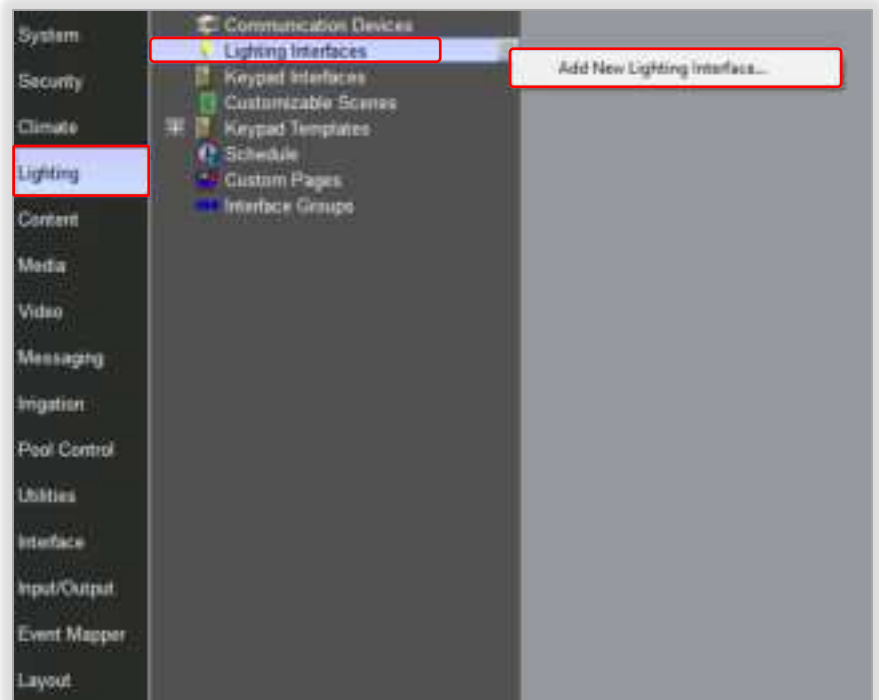
- 5) SELECT "FREE"  
*The file will download to the default web browser Downloads folder.*



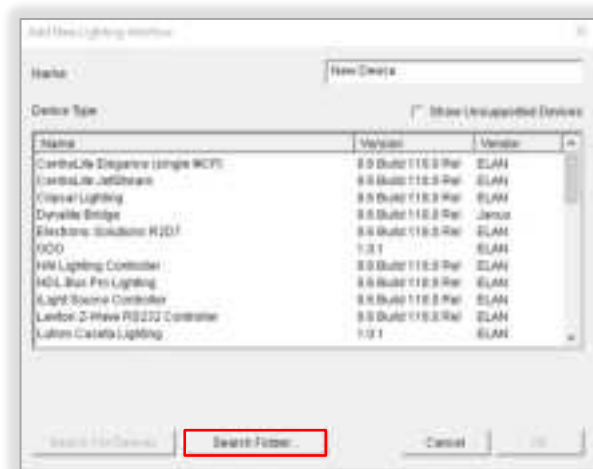
## IMPORT TAHOMA DRIVER

Import the latest TaHoma driver from the ELAN Marketplace. A fully operational TaHoma system is required prior to ELAN programming.

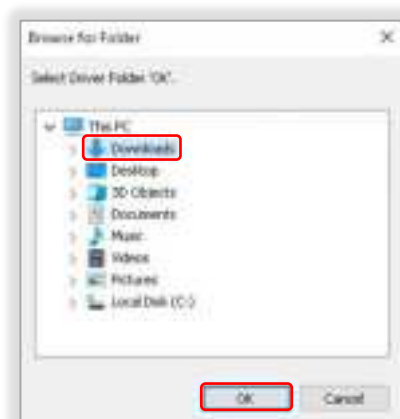
- 1) In the ELAN Management Cloud, LAUNCH the Configurator
- 2) SELECT "Lighting"
- 3) SELECT the "Lighting Interfaces" arrow or RIGHT-CLICK "Lighting Interfaces"
- 4) SELECT "Add New Lighting Interface..."



- 5) SELECT "Search Folder"



- 6) SELECT the driver folder where the Somfy TaHoma driver was downloaded
- 7) SELECT "OK"

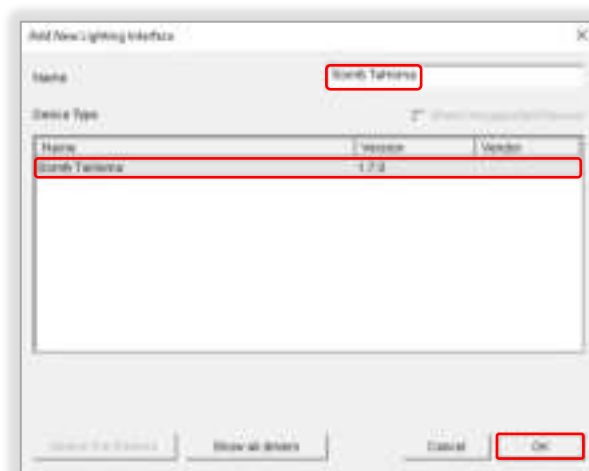




## ADD INTERFACE DRIVER

A fully operational TaHoma system is required prior to ELAN programming.  
For multiple TaHoma installations, repeat the steps below for each additional TaHoma switch.

- 1) ENTER an associated location name for the TaHoma switch in the Name field
- 2) SELECT "Somfy TaHoma" in Device Type list
- 3) SELECT "OK"



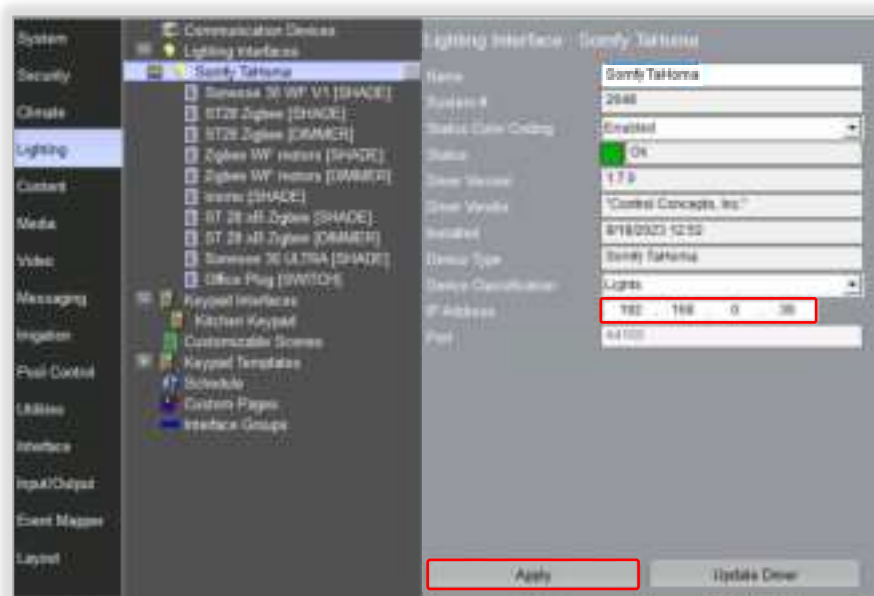
## NETWORK SET UP

Third-Party Integration must be enabled in the TaHoma app. Refer to the Integration Report for the TaHoma switch IP address. Ensure that a DHCP Reservation via MAC Address of the TaHoma switch is being used. Shades will auto-populate when communication is established.

- 1) ENTER the IP Address of the TaHoma in the IP Address field
- 2) SELECT "Apply"
- 3) In the TaHoma app Partners section, SELECT "ELAN" ([see Appendix A](#))
- 4) CONFIRM the Status displays "Ok"

The Status will change to **GREEN** when communication is successfully established.

Select and rename each device listed to the appropriate location where necessary.

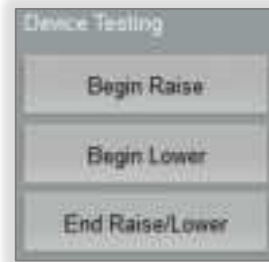


## DEVICE TEST

[See Appendix B](#) of this guide for a list of Somfy TaHoma specific commands and actions. RTS motors do not report positional feedback. RTS motors are capable of one programmable "my" or favorite position that requires an End Raise/Lower command when the motor is at rest.

### Test RTS Motors

- 1) SELECT an RTS Device [SHADE]
- 2) SELECT any of the three commands under Device Testing



### Test Zigbee Motor [SHADE] Profile

*NOTE: Zigbee devices will appear as a shade for Raise and Lower commands.*

- 1) SELECT a Zigbee [SHADE]
- 2) SELECT any of the three commands under Device Testing



[SHADE] profile for Zigbee

### Test Zigbee Motor [DIMMER] Profile

*NOTE: Zigbee devices will appear as a dimmer for percentage commands.*

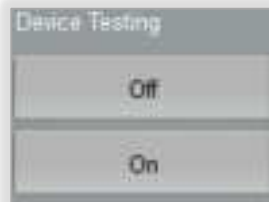
- 1) SELECT a Zigbee [DIMMER]
- 2) SELECT any of the percentage commands under Device Testing



[DIMMER] profile for Zigbee

### Test Smart Plug

- 1) SELECT a Smart Plug [SWITCH]
- 2) SELECT any of the two commands under Device Testing

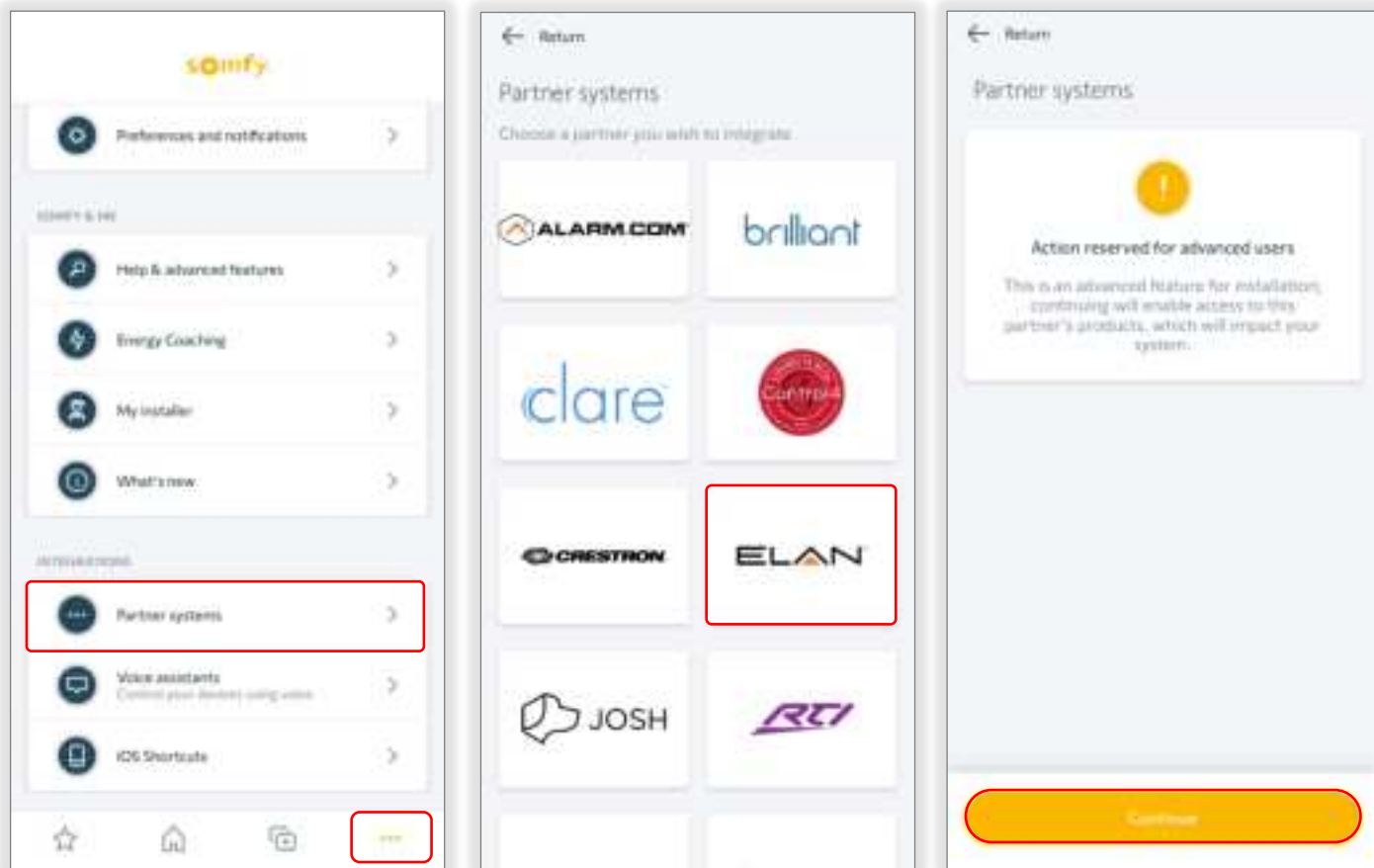


# APPENDIX

## [APPENDIX A] ENABLE THIRD-PARTY INTEGRATION

- 1) OPEN the TaHoma by Somfy app
- 2) SELECT the Menu icon in the bottom bar
- 3) SELECT "Partner systems"
- 4) SELECT "ELAN"
- 5) SELECT "Continue"

*The Integration Report will display all connected products.*





TAHOMA ZIGBEE [SHADE] COMMANDS	
Begin Lower	Moves blind to the fully closed position
Begin Raise	Moves blind to the fully open position
End Raise/Lower	Stops blind when moving



TAHOMA ZIGBEE [DIMMER] COMMANDS	
Off	Moves blind to the fully closed position
On Full	Moves blind to the fully open position
On (last level)	Last ON position
Go to %	Percentage positions between 90% & 10%



TAHOMA SMART PLUG [SWITCH] COMMANDS	
On	Turns power on to lighting or small appliance
Off	Turns power off to lighting or small appliance



TAHOMA RTS [SHADE] COMMANDS	
Begin Lower	Moves blind to the fully closed position
Begin Raise	Moves blind to the fully open position
End Raise/Lower	Stops blind movement or moves blind to the programmed "my" position if the blind is at rest

**FOR QUESTIONS OR ASSISTANCE PLEASE CONTACT TECHNICAL SUPPORT:**

(800) 22-SOMFY (76639)

Get answers to your questions from our Somfy FAQ page: [www.somfysystems.com/en-us/support/faq](http://www.somfysystems.com/en-us/support/faq)

Follow the steps to access Service & Support.

© Somfy Systems, Inc. • OCTOBER 2024  
All brands, products, and trademarks are the property of their respective owners.



**About Somfy®**

For over 50 years, Somfy has been pioneering innovative motorization and automated solutions for window coverings and exterior shading products. With comfort, ease of use, security, and sustainability in mind, our seamless and connected solutions are designed to help people make the move to living spaces impactful for humans and with a reduced impact on nature.

**A BRAND OF SOMFY GROUP**

New Jersey  
121 Herrod Blvd.  
Dayton, NJ 08810  
T: (609) 395-1300  
F: (609) 395-1776

**Somfy Systems, Inc.**  
**T: (800) 22-SOMFY**  
[www.somfypro.com](http://www.somfypro.com)  
Florida  
1200 SW 35th Ave.  
Boynton Beach, FL 33426  
T: (561) 995-0335  
F: (561) 995-7502

California  
15301 Barranca Pkwy.  
Irvine, CA 92618-2201  
T: (949) 727-3510  
F: (949) 727-3775

**Somfy ULC**  
**T: (800) 66-SOMFY**  
[www.somfypro.ca](http://www.somfypro.ca)  
Canada  
6411 Edwards Blvd.  
Mississauga, ON L5T 2P7  
T: (905) 564-6446  
F: (905) 238-1491