

# AVIATOR SEATS



## INSTALLATION INSTRUCTIONS

**CLUB CAR® PRECEDENT®**  
**CLUB CAR® TEMPO®**  
**CLUB CAR® ONWARD®**

2

**E-Z-GO® TXT®**  
**MADJAX® XSERIES®**  
**NAVITAS® CHASSIS**

4

**E-Z-GO® RXV®**

6

**YAMAHA® DRIVE®**  
**YAMAHA® DRIVE2®**

8

**ICON® VEHICLES**

10

# AVIATOR SEATS

INSTALLATION INSTRUCTIONS FOR  
**CLUB CAR® PRECEDENT®**  
**CLUB CAR® TEMPO®**  
**CLUB CAR® ONWARD®**

## STEP 1 REMOVE FACTORY SEATS

Carefully remove the original factory seats from the vehicle. Be sure to keep all the original (OEM) hardware, as it will be reused when installing the new Aviator seats.

## STEP 2 ATTACH HINGES

Attach the hinges removed from your OEM seats to the Aviator seat bottom using the retained hardware from the OEM seats or ¼-20x1" bolts.



## STEP 3 INSTALL HIP RESTRAINTS

Install the hip restraints using either the retained OEM hardware or ¼-20x1 ½" bolts. Make sure to orient the restraints correctly by identifying the front and back of the seat bottom.



## STEP 4 PREPARE SEAT BACK

Locate the hardware pack included in the box, which includes 2 seat back brackets and 6 ¼-20-1" bolts. Attach the seat back brackets using the ¼-20x1" bolts included in the hardware pack to the bottom of each side of the seat back.





## **STEP 5** PREPARE SEAT BACK (CONT.)

If installing seat backs to a two-passenger cart, attach seat back into the cart and install using the retained hardware on the top of the seat back.

If installing on a MadJax® Genesis 250/300 seat kit, remove the bolts from the seat back adapter brackets and flip them upside down as shown. Then attach the seats to the top using the retained hardware from OEM seats or ¼-20x1 ½" bolts.



## **STEP 6** INSTALL SEAT BACK

Install the seats by sliding the lower buckets on the seat back onto the lower brackets of the seat lean back bracket. Then attach the seats at the top using the retained hardware from the OEM seats or ¼-20x1 ½" bolts.



# INSTALLATION COMPLETE



**STEP 1 REMOVE FACTORY SEATS**

Carefully remove the original factory seats from the vehicle. Be sure to keep all the original (OEM) hardware, as it will be reused when installing the new Aviator seats.

**STEP 2 INSTALL HIP RESTRAINTS**

Begin with the seat bottom. Install the hip restraints using either the retained OEM hardware or M10x1.5x25mm bolts. Make sure to orient the restraints correctly by identifying the front and back of the seat bottom.

**STEP 3 ATTACH HINGES**

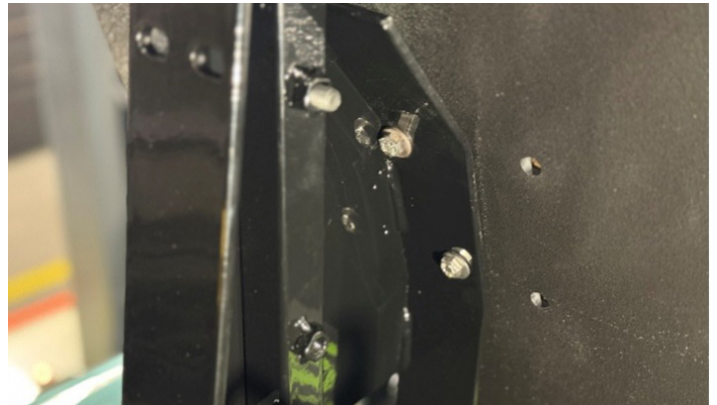
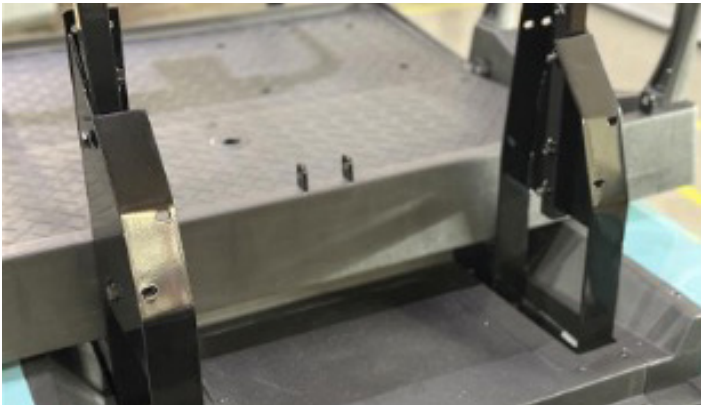
Using the screws and hinges removed from your OEM seats, attach the hinges to the three pre-drilled holes at the front of the new seat.





#### **STEP 4** INSTALL SEAT BACK

Attach the seat back to the seat bottom as shown in the images below. Use either the retained OEM hardware or M6x1.0x35mm bolts to secure it in place.



### **INSTALLATION COMPLETE**



# AVIATOR SEATS

## INSTALLATION INSTRUCTIONS FOR E-Z-GO® RXV®

### STEP 1 REMOVE FACTORY SEATS

Carefully remove the original factory seats from the vehicle. Be sure to keep all the original (OEM) hardware, as it will be reused when installing the new Aviator seats.

### STEP 2 INSTALL HIP RESTRAINTS

Begin with the seat bottom. Install the hip restraints using either the retained OEM hardware or M10x1.5x25mm bolts. Make sure to orient the restraints correctly by identifying the front and back of the seat bottom.



### STEP 3 ATTACH HINGES

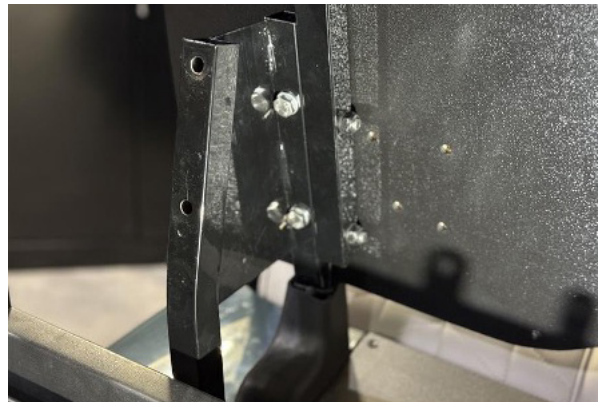
Using the screws and hinges removed from your OEM seats, attach the hinges to the three pre-drilled holes at the front of the new seat.





#### **STEP 4** INSTALL SEAT BACK

Attach the seat back to the seat bottom as shown in the images below. Use either the retained OEM hardware or M10x1.5x60mm bolts to secure it in place.



## **INSTALLATION COMPLETE**



## STEP 1 REMOVE FACTORY SEATS

Carefully remove the original factory seats from the vehicle. Be sure to keep all the original (OEM) hardware, including the seat hinges, as it will be reused when installing the new Aviator seats.

## STEP 2 PREPARE SEAT BOTTOM

Identify the hip restraint and hinge mounting locations on the seat bottom. Locate the seat bottom hardware pack, which contains (4) spacers and (8) M6x1.0x40mm bolts

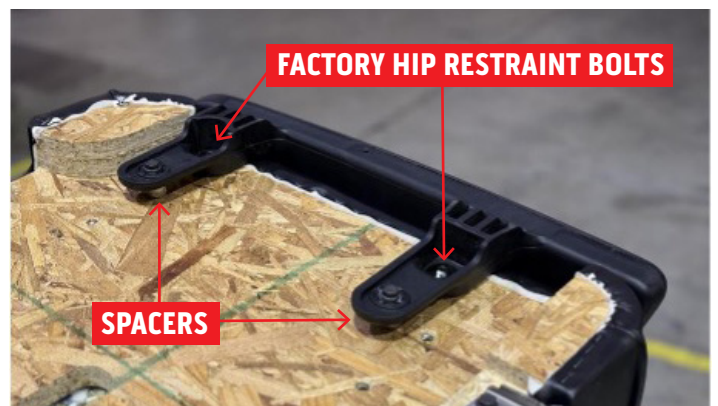
## STEP 3 ATTACH HINGES

For Yamaha® carts, use the two outermost holes on the front of the seat bottom to attach the hinges. Secure each hinge using (2) M6x1.0x40mm bolts from the hardware pack.



## STEP 4 INSTALL HIP RESTRAINTS

Align the hip restraints with the seat bottom. For the outermost bolts, reuse the factory hip restraint bolts. For the inner mounting points, use (2) spacers and (2) M6x1.0x40mm bolts from the hardware pack.



## STEP 5 PREPARE FOR SEAT BACK INSTALLATION

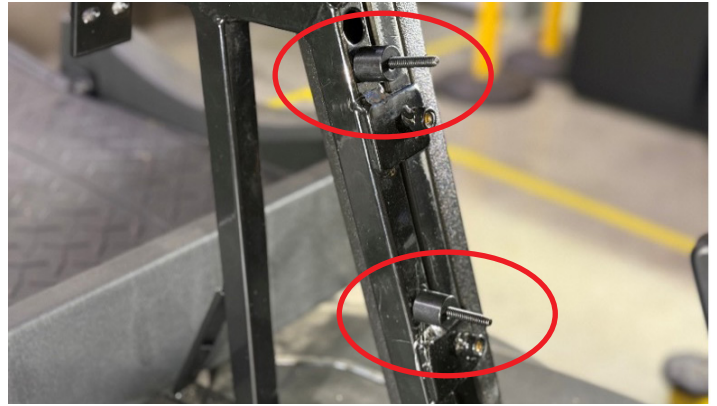
Identify the seat back hardware pack, which includes:

- (2) seat back brackets
- (4) spacers (¾")
- (4) M6x1.0x75mm bolts
- (4) additional spacers



## **STEP 6** INSTALL SEAT BACK HARDWARE

Using the washers and spacers, install the seat back bolts as shown.



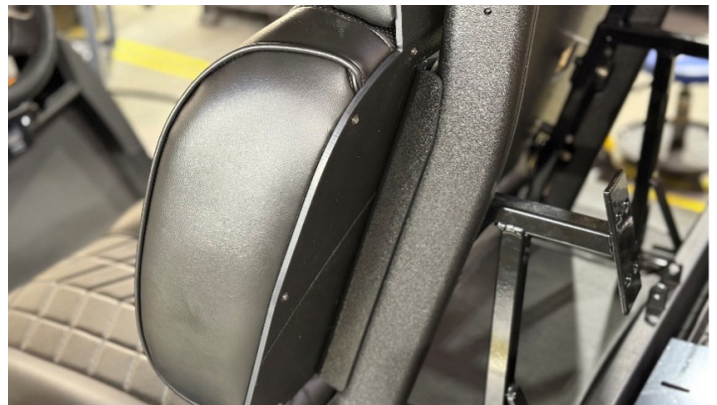
## **STEP 7** MOUNT SEAT BRACKETS

Attach the seat brackets to the cart as shown. Ensure the bends in the brackets are oriented to the correct sides (driver and passenger).



## **STEP 8** INSTALL SAT ASSEMBLY

Complete the installation by mounting the assembled seat to the cart as shown.



# INSTALLATION COMPLETE

### STEP 1 REMOVE FACTORY SEATS

Carefully remove the original factory seats from the vehicle. Be sure to keep all the original (OEM) hardware, as it will be reused when installing the new Aviator seats.

### STEP 2 INSTALL HIP RESTRAINTS

Begin with the seat bottom. Install the hip restraints using either the retained OEM hardware or M6x1.0x45mm bolts. Make sure to orient the restraints correctly by identifying the front and back of the seat bottom.



### STEP 3 ATTACH HINGES

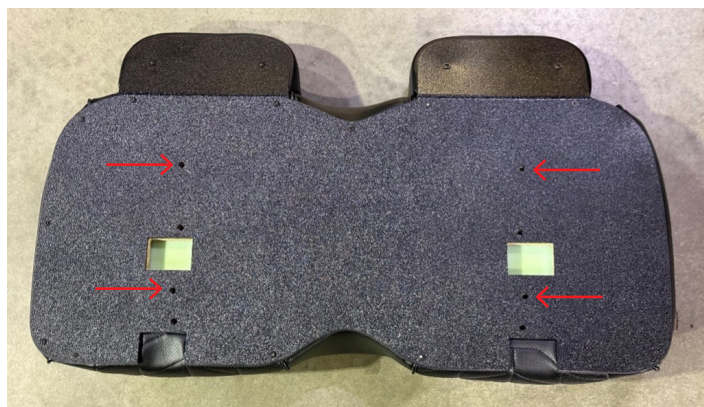
For ICON® carts, use the two innermost holes on the front of the seat bottom to attach the OEM seat hinges to the seat bottom. Secure each hinge using the OEM hardware or M6x1.0x45mm bolts.





#### STEP 4 INSTALL SEAT BACK

Install the seat back aligning the holes for the seat back to the mounting holes of the cart using the OEM retained hardware or M6x1.0x85mm bolts.



### INSTALLATION COMPLETE

