

ART+SOUND™

Bluetooth®

Wireless Jukebox
AR3003

User Manual



Location of Controls

(Side panel)

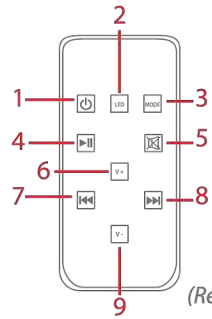
1. FM LED Indicator
2. Bluetooth LED Indicator
3. AUX 1 LED Indicator
4. AUX 2 LED Indicator
5. [LED] Button: Turn LED lights ON/OFF
6. [▶/I/M] Button

Long Press - Switch input mode
Quick Press - Play/pause music
Quick Press - Autoscans radio signal (in FM radio)

7. [◀◀] Button: Skip to previous track
8. [▶▶] Button: Skip to next track
9. [V-] Button: Decrease volume
10. [V+] Button: Increase volume

(Remote)

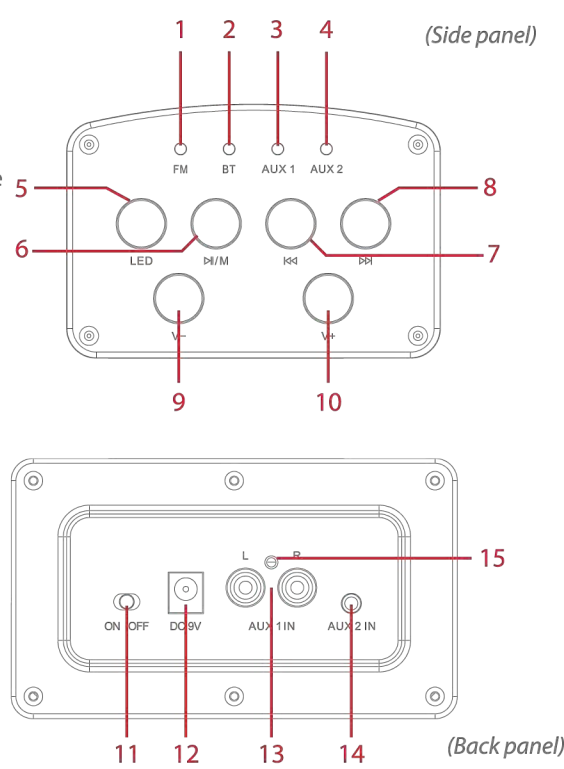
1. [⏻] Button
2. [LED] Button
3. [MODE] Button
4. [▶/I] Button
5. [⏮] Button
6. [V+] Button
7. [⏭] Button
8. [▶▶] Button
9. [V-] Button



(Remote)

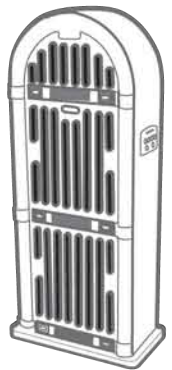
(Back panel)

11. [POWER] Switch
12. DC 9V Power Jack
13. AUX 1 IN
14. AUX 2 IN
15. FM Antenna cable

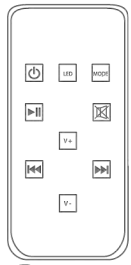


(Back panel)

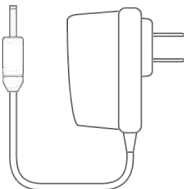
In the Box



Speaker



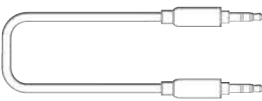
Remote



AC Adaptor



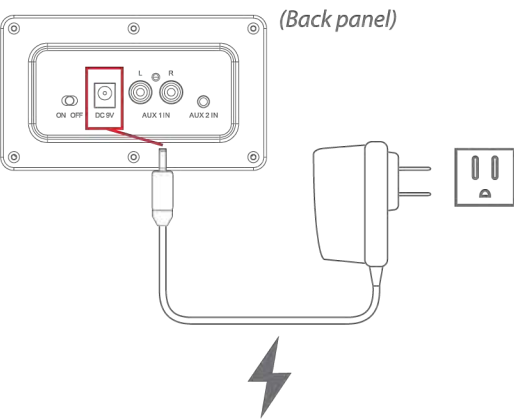
RCA Cable



3.5mm Auxiliary Cable

Setting Up the Speaker

Attach the AC adaptor to the DC 9V power jack on the back panel of the speaker. Connect the adaptor to a wall outlet.



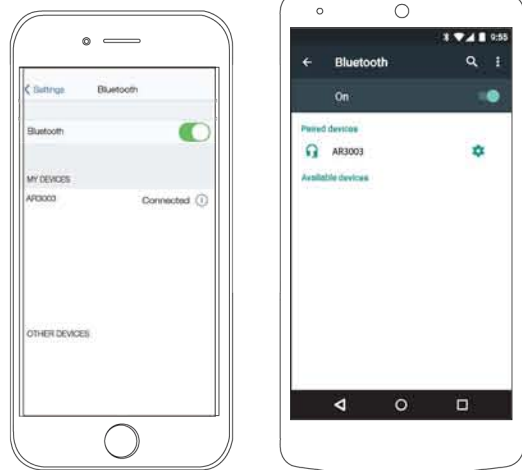
Pairing the Speaker

1. Turn the speaker ON by switching the [POWER] switch to the ON position. A tone will be heard and the Bluetooth LED indicator will quickly flash RED.
2. Set your Bluetooth-enabled device to search for Bluetooth devices. When your Bluetooth-enabled device finds the speaker, select "AR3003" from the list of found devices.
3. After a successful pairing, a tone will be heard indicating that Bluetooth is connected and the Bluetooth LED indicator will slowly flash RED.

If a previously paired device is in range when the speaker is turned on, the speaker will connect

On an iOS or Android Device

- Go to **SETTINGS > BLUETOOTH** (Make sure Bluetooth is turned ON)



The images above are typical of many Bluetooth-enabled devices in the market today, and are used to assist in the explanation of the pairing process. Your Bluetooth-enabled device's interface and interaction with the speaker may slightly differ from the illustrations above.

Using the Speaker

Powering ON/OFF

- To turn the speaker ON, switch the [POWER] Switch to the ON position.
- To turn the speaker OFF, switch the [POWER] switch to the OFF position.
- Press the [⏻] button on the remote to put the speaker in standby mode.

Adjusting the Volume

- Press the [V+] button on the side panel or the remote to increase volume.
- Press the [V-] button on the side panel or the remote to decrease volume.
- Press the [⏮] button on the remote to mute/unmute the speaker.

Switching Modes

Long press the [▶/I/M] button on the side panel of the speaker or the [MODE] button on the remote to switch between modes:

- FM Radio
- Bluetooth
- AUX 1 (RCA cable input)
- AUX 2 (3.5mm aux cable input)

Turning the Speaker LEDs ON/OFF

- Press the [LED] button on the side panel or remote to turn the speaker grill LED's ON/OFF.

Playing Media

To enjoy media wirelessly on your speaker, make sure that the speaker is properly paired to your Bluetooth-enabled device. If you are pairing the device for the first time, please consult the "Pairing the Speaker" section of this guide.

Playing/Pausing Media Playback

- To pause media playback, quick press the [▶/I/M] button on the side panel of the speaker or the [▶/I] button on the remote.
- To resume media playback, quick press the [▶/I/M] button on the side panel of the speaker or the [▶/I] button on the remote, again.

Skipping Tracks

- To skip to the next track press the [▶▶] button on the side panel or the remote.
- To skip to the previous track press the [◀◀] button on the side panel or the remote.

Using the FM Radio

Turn the speaker ON and switch to the FM radio by long pressing the [PLAY/MODE] button on the side panel of the speaker or the [MODE] button on the remote. The FM radio LED indicator will turn RED.

- To scan radio stations, press the [PREV] and [NEXT] buttons on the side panel of the speaker or the [▶/I] and [◀◀] buttons on the remote.
- Quick press the [▶/I/M] button on the side panel or the [▶/I] button on the remote to autoscans to the next radio station with a clear signal.

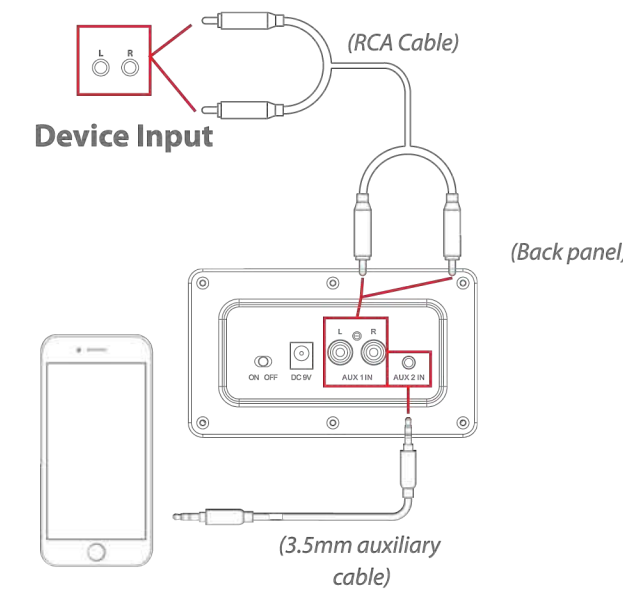
For better reception, place the FM antenna cable near a window or space with line of sight to the sky.

Using as a Wired Speaker

AUX 1 Input (RCA Cable)

The AUX 1 input is used with an RCA cable. Attach the left (red) and right (white) connectors to the AUX 1 jacks, then attach the other end to your stereo or other media playing device.

Change the speaker's mode to AUX 1 by long pressing the [▶/I/M] button on the side panel of the speaker or by pressing the [MODE] button on the remote until the AUX 1 LED indicator turns RED.



AUX 2 Input (3.5mm Aux Cable)

The AUX 2 input is used with a 3.5mm auxiliary cable. Attach the 3.5mm aux cable to AUX 2 input on the speaker and the other end to the headphone jack on your media playing device.

Change the speaker's mode to AUX 2 by long pressing the [▶/I/M] button on the side panel of the speaker or by pressing the [MODE] button on the remote until the AUX 2 LED indicator turns RED.

When a device is plugged into either Audio Input jack, the speaker controls have limited function. You must use your connected device to control music playback.

Legal information

Caution: Any changes or modifications not expressly approved could void the user's authority to operate the equipment.

Note: This equipment has been tested and found to comply with the limits for a Class B digital device, pursuant to part 15 of the FCC Rules. These limits are designed to provide reasonable protection against harmful interference in a residential installation. This equipment generates, uses and can radiate radio frequency energy and, if not installed and used in accordance with the instructions, may cause harmful interference to radio communications. However, there is no guarantee that interference will not occur in a particular installation. If this equipment does cause harmful interference to radio or television reception, which can be determined by turning the equipment off and on, the user is encouraged to try to correct the interference by one or more of the following measures:

- Reorient or relocate the receiving antenna.

- Increase the separation between the equipment and receiver.

- Connect the equipment into an outlet on a circuit different from that to which the receiver is connected.

- Consult the dealer or an experienced radio/TV technician for help.

Limited Warranty

90 Days Limited Warranty

In the unlikely event that this product is defective, or does not perform properly, you may within ninety (90) days from your original date of purchase return it to the authorized service center for repair or exchange.

TO OBTAIN WARRANTY SERVICE:

- Call the Customer Support number located below, or go to our website portal to receive an SRO number.
- Provide proof of the date of purchase within the package (dated bill of sale).
- Prepay all shipping costs to the authorized service center, and remember to insure your return.
- Include a return shipping address (no P.O. Boxes), a telephone contact number, and the defective unit within the package.
- Describe the defect or reason you are returning the product.

Your product will be repaired or replaced, at our option, for the same or similar model of equal value if examination by the service center determines this product is defective. Products received damaged as a result of shipping will require you to file a claim with the carrier.

The shipping address of the authorized service center is:

Southern Telecom, Inc.
Attention: Customer Service (2nd Floor)
14-C 53rd Street
Brooklyn, NY 11232

Should you have any questions or problems concerning this product, please contact our customer service department at:

Customer Support:
Phone: 1-877-768-8481
Monday-Friday 8AM-10PM(EST)

www.southern telecom.com
Click on "Product Support"

Warranty service not provided

This warranty does not cover damage resulting from accident, misuse, abuse, improper installation or operation, lack of reasonable care, and unauthorized modification. This warranty is voided in the event any unauthorized person opens, alters or repairs this product. All products being returned to the authorized service center for repair must be suitably packaged.

Limitation of Warranty:

• THE WARRANTY STATED ABOVE IS THE ONLY WARRANTY APPLICABLE TO THIS PRODUCT. ALL OTHER WARRANTIES, EXPRESS OR IMPLIED (INCLUDING ALL IMPLIED WARRANTIES OF MERCHANTABILITY OR FITNESS FOR A PARTICULAR PURPOSE) ARE HEREBY DISCLAIMED. NO VERBAL OR WRITTEN INFORMATION GIVEN BY AIT, INC. IT'S AGENTS, OR EMPLOYEES SHALL CREATE A GUARANTEE OR IN ANY WAY INCREASE THE SCOPE OF THIS WARRANTY.

• REPAIR OR REPLACEMENT AS PROVIDED UNDER THIS WARRANTY IS THE EXCLUSIVE REMEDY OF THE CONSUMER. AIT, INC. SHALL NOT BE LIABLE FOR INCIDENTAL OR CONSEQUENTIAL DAMAGES RESULTING FROM THE USE OF THIS PRODUCT OR ARISING OUT OF ANY BREACH OF ANY EXPRESS OR IMPLIED WARRANTY ON THIS PRODUCT. THIS DISCLAIMER OF WARRANTIES AND LIMITED WARRANTY ARE GOVERNED BY THE LAWS OF THE STATE OF NEW YORK. EXCEPT TO THE EXTENT PROHIBITED BY APPLICABLE LAW, ANY IMPLIED WARRANTY OF MERCHANTABILITY OR FITNESS FOR A PARTICULAR PURPOSE ON THIS PRODUCT IS LIMITED TO THE APPLICABLE WARRANTY PERIOD SET FORTH ABOVE.

Some states do not allow the exclusion nor limitation of incidental or consequential damages, or limitations on how long an implied warranty lasts so the above limitations on exclusions may not apply to you. This warranty gives you specific legal rights, and you also may have other rights that vary from state to state.

The Bluetooth® word mark and logos are owned by the Bluetooth SIG, Inc.

Questions and Customer Support

For further assistance or troubleshooting, please call our customer support line:

Phone: 1-877-768-8481
Monday-Friday 8AM-10PM (EST)

www.southern telecom.com
Click on "Product Support"

